

Meta-analyses on the effects of individual atypical, energy-related symptoms and atypical, energy-related symptom severity (AES severity) at baseline on antidepressant treatment outcomes: results from iSPOT-D, CO-MED, GENDEP and EMBARC

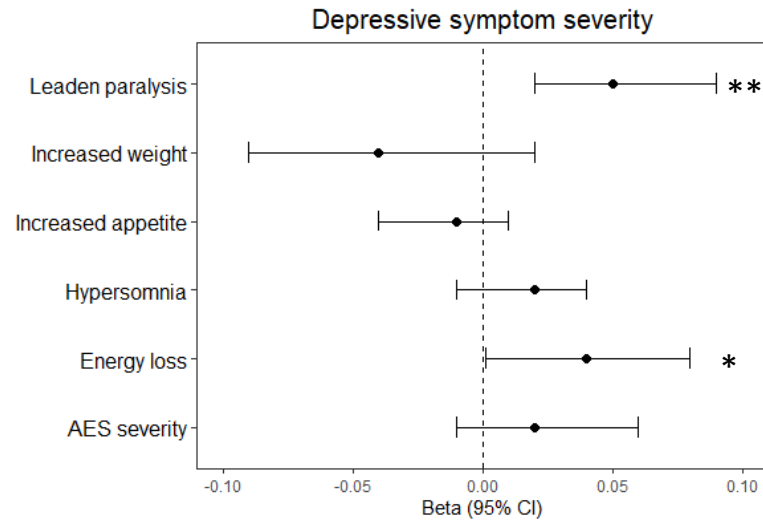


Figure 1. Individual atypical, energy-related symptoms and AES severity as predictors of depressive symptom severity during treatment. ** $p < .01$ * $p < .05$.

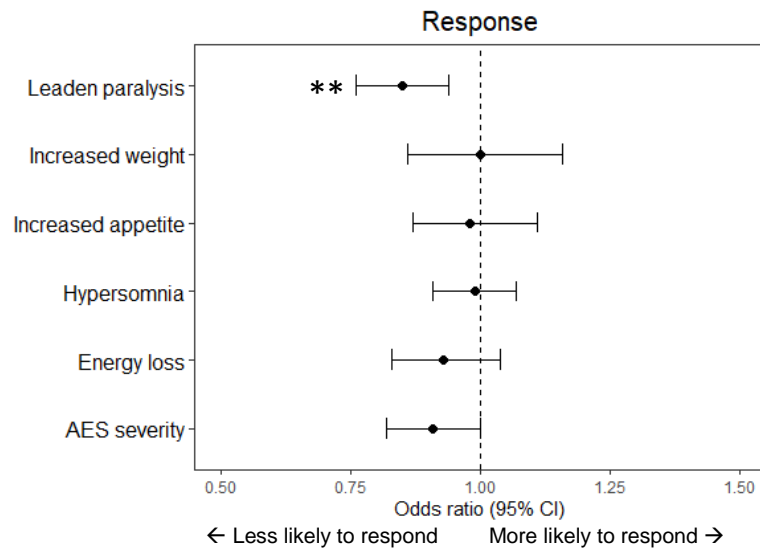


Figure 2. Individual atypical, energy-related symptoms and AES severity as predictors of treatment response.

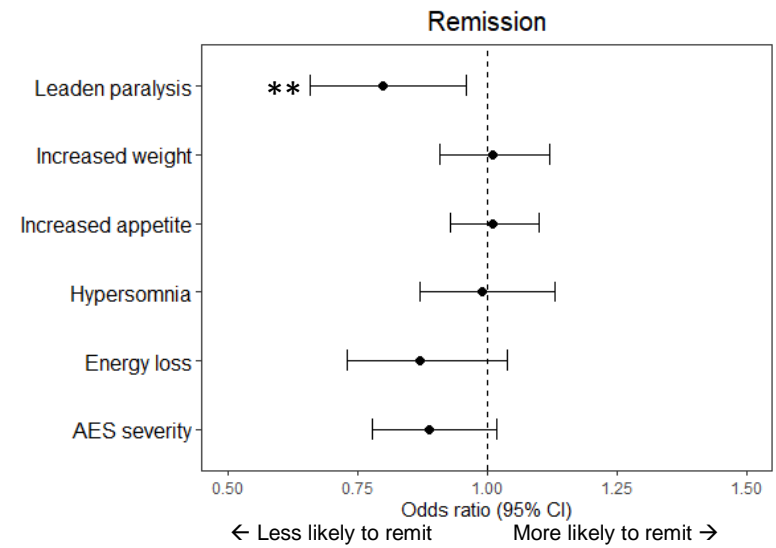


Figure 3. Individual atypical, energy-related symptoms and AES severity as predictors of remission.