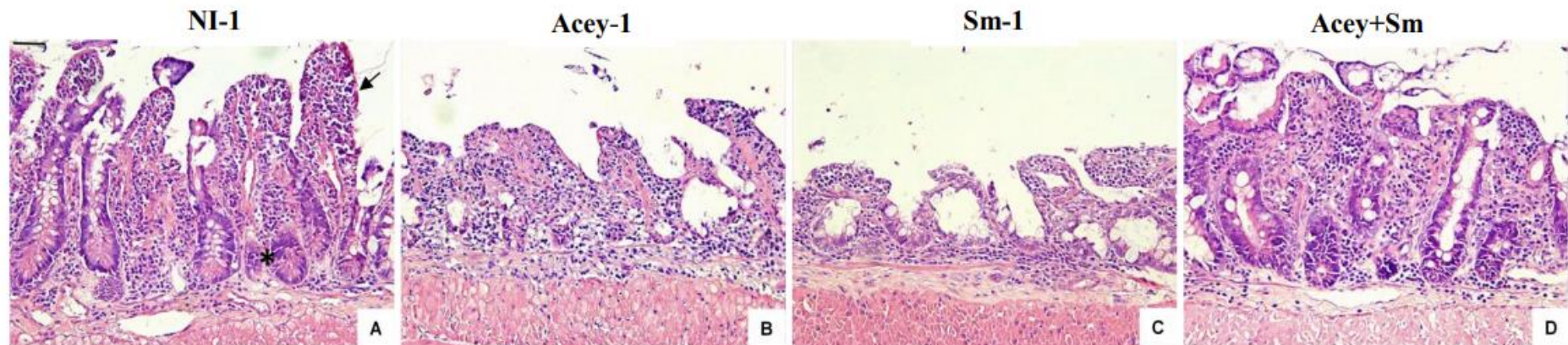
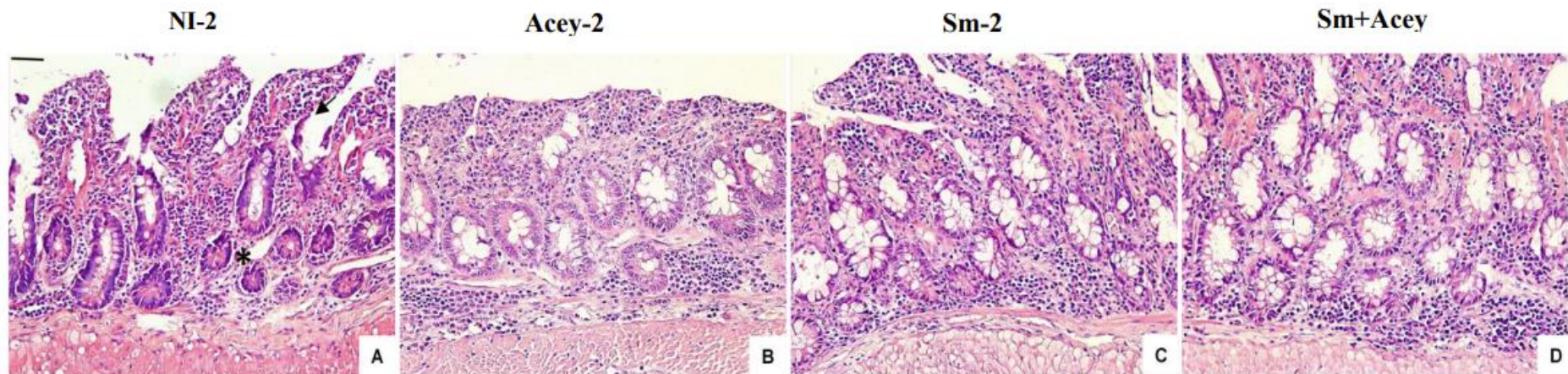


Previous hookworm infection attenuates the immune response to a subsequent *Schistosoma mansoni* infection in an experimental model

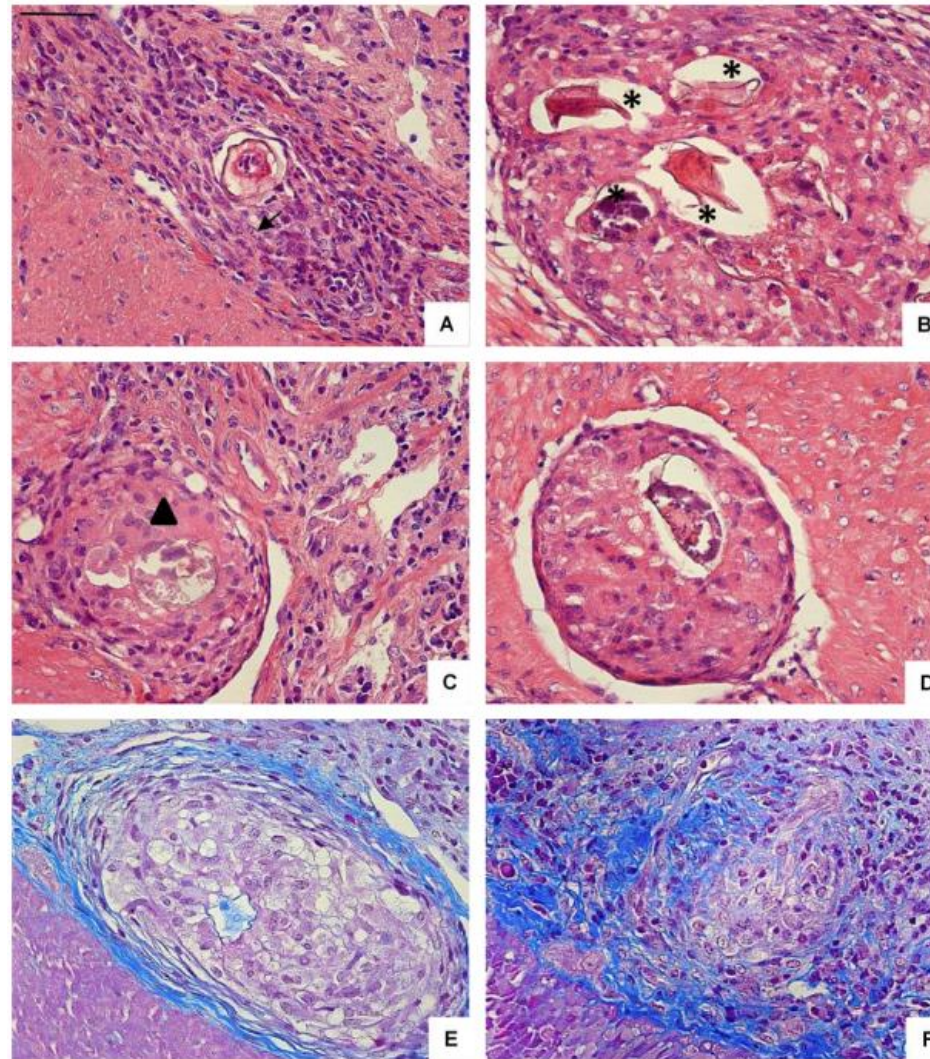
Luis Fernando Viana Furtado<sup>1\*</sup>, Luciana Ribeiro Serafim<sup>2</sup>, Vivian Jordania da Silva<sup>3</sup>, Silvia Regina Costa Dias<sup>4</sup>, Nívia Carolina Nogueira de Paiva<sup>5</sup>, Cláudia Martins Carneiro<sup>5</sup>, Élide Mara Leite Rabelo<sup>2</sup>



Representative photomicrographs of histological sections of the small intestine of hamsters. Non-infected group (NI-1), infected with 50 L3 of *Ancylostoma ceylanicum* (Acey-1), infected with 30 cercariae of *Schistosoma mansoni* (Sm-1), and infected with 50 L3, after 20 dpi, coinfecting with 30 cercariae of *S. mansoni* (Acey+Sm). A: Normal histological appearance showing intact villi (arrow) and Lieberkühn crypts (asterisk); B, C: Tissue architecture disruption showing areas with reduced villus height; D: Hypertrophy of Lieberkühn crypts. Hematoxylin-Eosin. Scale bar = 50 $\mu$ m.



Representative photomicrographs of histological sections of the small intestine of hamsters. Non-infected group (NI-2), infected with 50 L3 of *Ancylostoma ceylanicum* (Acey-2), infected with 30 cercariae of *Schistosoma mansoni* (Sm-2), infected with 30 cercariae of *S. mansoni* and after 65 dpi, coinfecting with 50 L3 of *A. ceylanicum* (Acey+Sm). A: Normal histological appearance showing villi (arrow) and intact Lieberkühn crypts (asterisk); B, C, and D: Tissue architecture disruption showing areas with reduced villus height and hypertrophy of Lieberkühn crypts. Hematoxylin-Eosin. Scale bar = 50 $\mu$ m.



Representative photomicrographs of histological sections of the small intestine of hamsters infected with *Schistosoma mansoni* and *Ancylostoma ceylanicum*, showing epithelioid granulomas in different developmental stages: exudative phase granuloma around embryonated *S. mansoni* egg, with presence of epithelioid cells (arrow) (A); exudative phase granuloma around *S. mansoni* eggs at different stages (B); productive phase granulomas around necrotic eggs (asterisk) showing giant cells (arrow) (C and D); healing granulomas by fibrosis in an early process from the periphery to the center (E) or later stage (F). Hematoxylin-Eosin. Scale bar = 50 $\mu$ m.