

*Supplementary Material*

**Molecular genetic biodiversity assessment of the Wallis Island sponge fauna in the  
Tropical Pacific**

Adrian Galitz, Merrick Ekins, Maggie M. Reddy, Eric Folcher, Mahé Dumas, John Butscher,  
Olivier P. Thomas, Oliver Voigt, Gert Wörheide, Sylvain Petek\*, Dirk Erpenbeck\*

\*corresponding authors: DE: erpenbeck@lmu.de; SP: sylvain.petek@ird.fr

This file includes:

- Supplementary Figure S1: In-Situ and Ex-Situ sponge specimen pictures



*Crella cyathophora*  
GW33268 - P583



*Petrosia* sp. (QM2721)  
GW33273 - P559



*Agelas mauritiana*  
GW33274 - P652



Demospongiae indet.  
GW33275 - P651



*Rhaphoxya* sp. (QM2087)  
GW33276 - P585



*Fascaplysinopsis reticulata*  
GW33277 - P640



*Dysidea* sp. (QM2352)  
GW33280 - P650



*Chelonaplysilla delicata*  
GW33283 - P649



*Plicatellopsis* sp. (QM6002)  
GW33284 - P604



*Echinodictyum asperum*  
GW33285 - P561



*Cinachyrella* sp. (QM4680)  
GW33286 - P560



*Monanchora unguiculata*  
GW33295 - P557



Petrosiidae indet.  
GW33296 - P558



*Haliclona* sp. (QM4996)  
GW33297 - P556



*Craniella abracadabra*  
GW33300 - P555



*Grantessa* sp. (QM6003)  
GW33303 - P648



*Crella papillosa*  
GW33307 - P591



*Acanthodendrilla* sp. (QM1948)  
GW33308 - P586



*Hyrtios* cf. *erectus* (QM0796)  
GW33312 - P581



*Oscarella* sp.  
GW33316 - P589



*Hyrtios erectus*  
GW33321 - P587



*Rhaphoxya* sp. (QM2785)  
GW33325 - P588



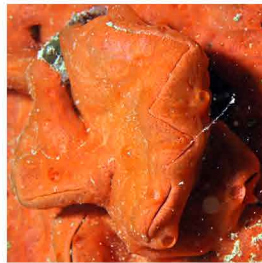
*Dactylospongia* sp. (QM6019)  
GW33330 - P590



*Halichondria* sp. (QM1429)  
GW33332 - P592



*Rhapsoxya* sp. (QM2785)  
GW33334 - P569



*Clathria* sp. (QM1882)  
GW33335 - P566



*Scopalina* sp. (QM6029)  
GW33336 - P567



*Haliclona* sp. (QM0950)  
GW33337 - P568



*Amorphinopsis maculosa*  
GW33338 - P570



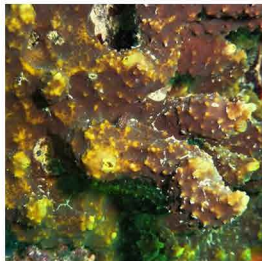
*Callyspongia* sp. (QM4998)  
GW33339 - P565



*Myrmekioderma* sp. (QM4997)  
GW33343 - P564



*Stylissa* cf. *carteri* (QM0336)  
GW33349 - P563



*Suberea laboutei*  
GW33355 - P562



*Neoernsta* sp.  
GW33361 - P584



*Psammocinia* sp. (QM6095)  
GW33368 - P593



*Hyrtios erectus*  
GW33370 - P594



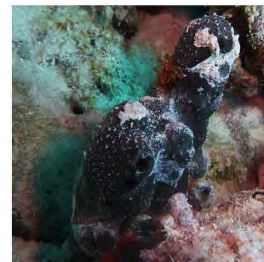
*Hyrtios erectus*  
GW33373 - P595



*Fascaplysinopsis reticulata*  
GW33379 - P596



*Stylissa carteri*  
GW33385 - P597



*Dactylospongia* sp. (QM6019)  
GW33388 - P590



*Spongia* sp. (QM1364)  
GW33392 - P598



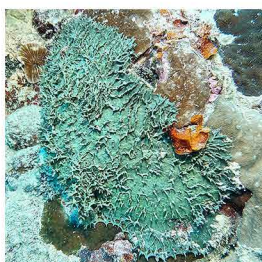
*Leucetta microraphis*  
GW33393 - P599



*Aplysinella* sp. (QM2063)  
GW33394 - P571



*Dysidea* sp. (QM1519)  
GW33400 - P572



*Aplysinella* sp. (QM2034)  
GW33406 - P573



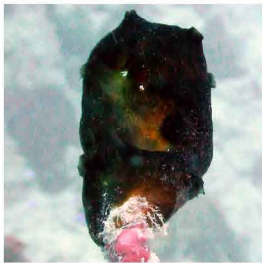
*Halichondria* sp. (QM1984)  
GW33412 - P574



*Haliclona* sp. (QM4999)  
GW33416 - P575



*Tethya* sp. (QM6000)  
GW33422 - P576



*Monanchora unguiculata*  
GW33423 - P577



*Stylissa cf. carteri* (QM0336)  
GW33424 - P578



*Myrmekioderma granulatum*  
GW33427 - P623



*Pseudoceratina* sp. (QM1565)  
GW33429 - P608



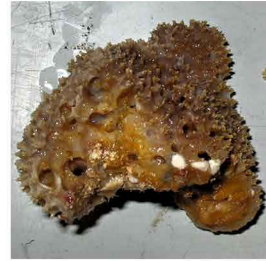
*Haliclona* sp. (QM1980)  
GW33430 - P647



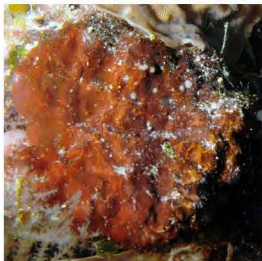
*Astrosclera willeyana*  
GW33431 - P616



*Psammocinia* sp. (QM4999)  
GW33433 - P624



*Fasciospongia* sp. (QM6004)  
GW33434 - P625



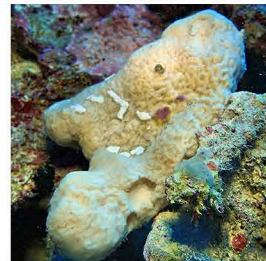
*Pseudoceratina* sp. (QM1565)  
GW33435 - P626



*Dysidea* sp. (QM0016)  
GW33436 - P627



*Stylissa cf. carteri* (QM0336)  
GW33437 - P628



*Rhapsoxya* sp. (QM2785)  
GW33438 - P620



*Neoernsta* sp.  
GW33442 - P613



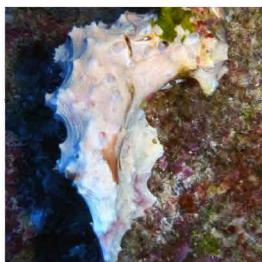
*Clathrina* sp. (QM2550)  
GW33448 - P614



*Dactylospongia* sp. (QM6036)  
GW33450 - P646



*Pseudocortidium* sp. (QM6011)  
GW33454 - P654



*Pseudoceratina* sp. (QM1565)  
GW33455 - P659



*Halichondria* sp. (QM1429)  
GW33456 - P660



*Pericharax orientalis*  
GW33462 - P605



*Plicatellopsis* sp. (QM6002)  
GW33463 - P604



*Agelas mauritiana*  
GW33469 - P661



*Callyspongia* sp. (QM6009)  
GW33470 - P657



*Spongia* sp. (QM4256)  
GW33471 - P653



*Haliclona* sp. (QM2555)  
GW33475 - P655



*Oscarella* sp. (QM3270)  
GW33476 - P656



*Leucetta chagosensis*  
GW33478 - P618



*Dactylospongia metachromia*  
GW33481 - P642



*Aplysinella* sp. (QM6076)  
GW33483 - P658



*Fasciospongia* sp. (QM4703)  
GW33486 - P639



Applysinellidae indet.  
GW33487 - P635



*Suberea ianthelliformis*  
GW33488 - P636



*Astrosclera willeyana*  
GW33494 - P637



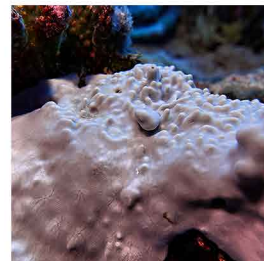
*Fascaplysinopsis ronquinni*  
GW33495 - P638



*Aplysina* sp. (QM6008)  
GW33499 - P641



*Clathria* sp. (QM6010)  
GW33517 - P643



*Lamellodysidea herbacea*  
GW33518 - P644



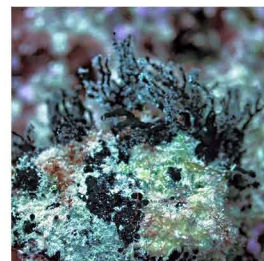
*Rhaphoxya* sp. (QM2752)  
GW33519 - P645



*Halichondria* sp. (QM1984)  
GW33521 - P634



*Lissodendoryx* sp. (QM1281)  
GW33527 - P622



*Ciocalyptra* sp. (QM6005)  
GW33532 - P629



*Agelas mauritiana*  
GW33533 - P630



*Aplysinella* sp. (QM6006)  
GW33534 - P631



*Psammocinia* sp. (QM0001)  
GW33535 - P632



*Dysidea* cf. *pallescens* (QM0630)  
GW33536 - P633



*Stylissa massa*  
GW33544 - P579



*Pericharax orientalis*  
GW33552 - P582



*Jaspis* sp. (QM4187)  
GW33558 - P600



*Stylissa* cf. *carteri* (QM0336)  
GW33559 - P601



*Aplysinellidae* indet.  
GW33560 - P603



*Leucetta microraphis*  
GW33563 - P609



*Ascandra* sp.  
GW33569 - P610



*Callyspongia* sp. (QM2061)  
GW33571 - P611



*Rhaphoxya* sp. (QM2087)  
GW33576 - P617



*Leucettidae* indet.  
GW33582 - P619



*Rhaphoxya* sp. (QM2785)  
GW33588 - P621



*Haliclona* sp. (QM1971)  
GW33594 - P602



*Chelonaplysilla violacea*  
GW33603 - P606



*Halichondria* sp. (QM1429)  
GW33606 - P607

**Supplementary Figure S1:** In-Situ and Ex-Situ sponge specimen pictures ordered by the first SNBS-BSPG.GW##### representative for a respective specimen Field ID (P###). One Field ID can pertain to multiple different samples, with duplicate pictures being omitted. Refer to Supplementary Table S1 for further details. All pictures ©IRD: Sylvain Petek, Eric Folcher, Mahé Dumas, Merrick Ekins