

Supplementary Material

**Molecular genetic biodiversity assessment of the Wallis Island sponge fauna
in the Tropical Pacific**

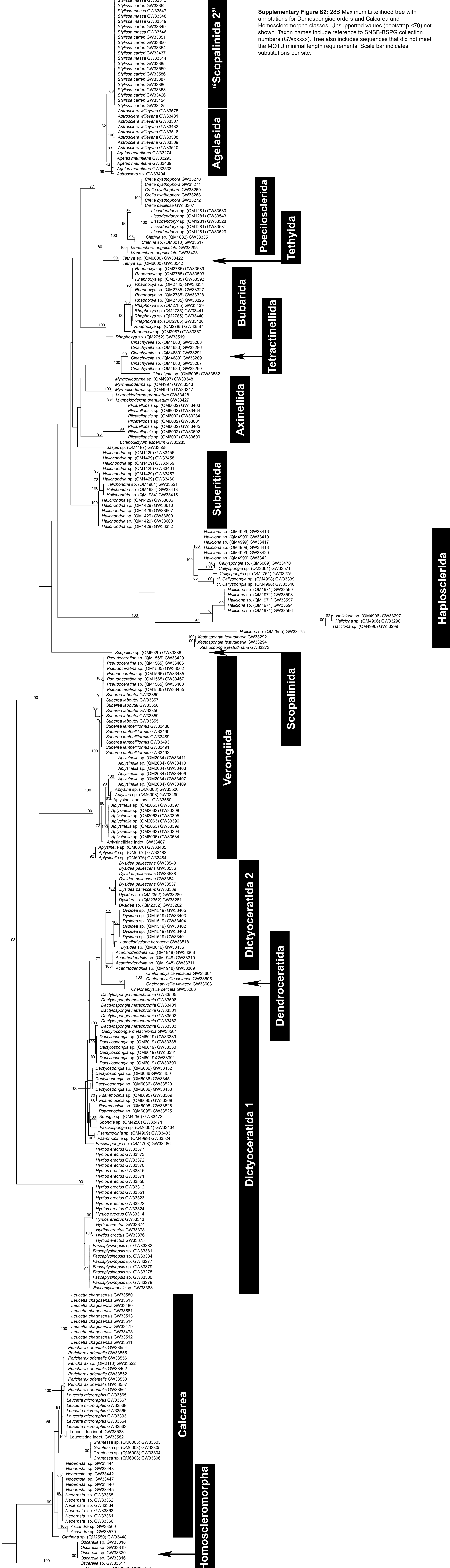
Adrian Galitz, Merrick Ekins, Maggie M. Reddy, Eric Folcher, Mahé Dumas, John Butscher,
Olivier P. Thomas, Oliver Voigt, Gert Wörheide, Sylvain Petek*, Dirk Erpenbeck*

*corresponding authors: DE: erpenbeck@lmu.de; SP: sylvain.petek@ird.fr

This file contains:

- Supplementary Figure S2: 28S Maximum Likelihood tree
- Supplementary Figure S3: CO1 Maximum Likelihood tree
- Supplementary Figure S4: 28S Maximum Likelihood subtree (Agelasida & “Scopalinida”)
- Supplementary Figure S5: 28S Maximum Likelihood subtree (Poecilosclerida)
- Supplementary Figure S6: 28S Maximum Likelihood subtree (Axinellida)
- Supplementary Figure S7: 28S Maximum Likelihood subtree (Haplosclerida)
- Supplementary Figure S8: 28S Maximum Likelihood subtree (Dictyoceratida)
- Supplementary Figure S9: 28S Maximum Likelihood subtree (Calcarea)
- Supplementary Figure S10: CO1 Maximum Likelihood subtree (Suberitida)
- Supplementary Figure S11: CO1 Maximum Likelihood subtree (Poecilosclerida)
- Supplementary Figure S12: CO1 Maximum Likelihood subtree (Dictyoceratida)

Supplementary Figure S2: 28S Maximum Likelihood tree with annotations for Demospongiae orders and Calcarea and Homoscleromorpha classes. Unsupported values (bootstrap <70) not shown. Taxon names include reference to SNSB-BSPG collection numbers (GWxxxxx). Tree also includes sequences that did not meet the MOTU minimal length requirements. Scale bar indicates substitutions per site.



Supplementary Figure S3: CO1 Maximum Likelihood tree with annotations for Demospongiae orders and Calcarea and Homoscleromorpha classes. Unsupported values (bootstrap <70) not shown. Taxon names include reference to SNSB-BSPG collection numbers (GWxxxxx). Tree also includes sequences that did not meet the MOTU minimal length requirements. Scale bar indicates substitutions per site.

Stylissa carteri GW33424
Stylissa carteri GW33353
Stylissa carteri GW33352
Stylissa carteri GW33385
Stylissa massa GW33545
Stylissa carteri GW33437
Stylissa carteri GW33426
Stylissa massa GW33544
Stylissa massa GW33548
Stylissa carteri GW33386
Stylissa carteri GW33354
Stylissa carteri GW33351
Stylissa carteri GW33387
Stylissa carteri GW33350
Stylissa carteri GW33349
Stylissa carteri GW33425
Stylissa massa GW33546
Stylissa carteri GW33559
Stylissa carteri GW33586
Stylissa carteri GW33584
Stylissa massa GW33547
Stylissa massa GW33549

“Scopalinida 2”

Agelasida

Suberitida

Tetractinellida

Axinellida 2

Haplosclerida

Verongiida

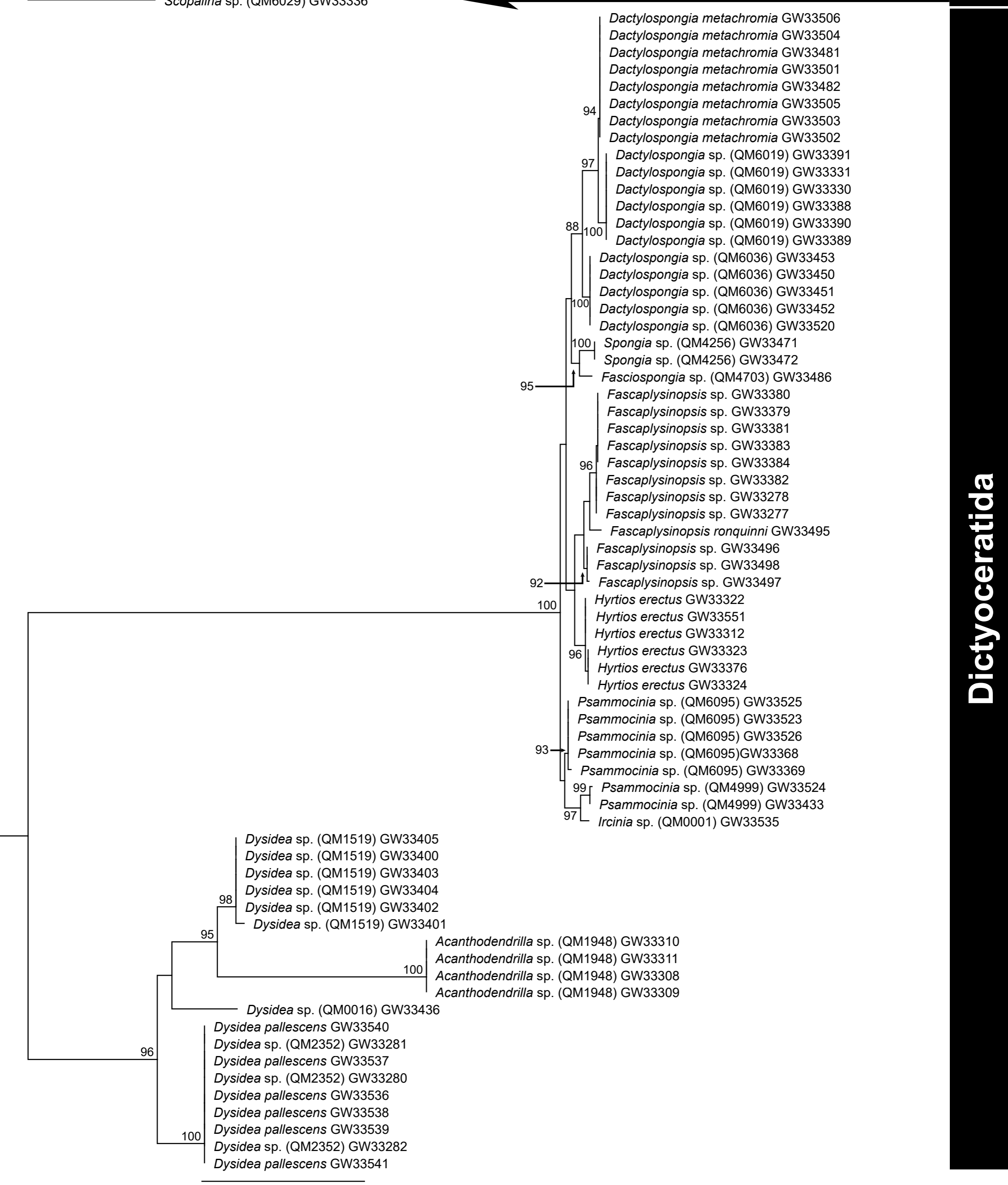
Axinellida 1

Tethyida

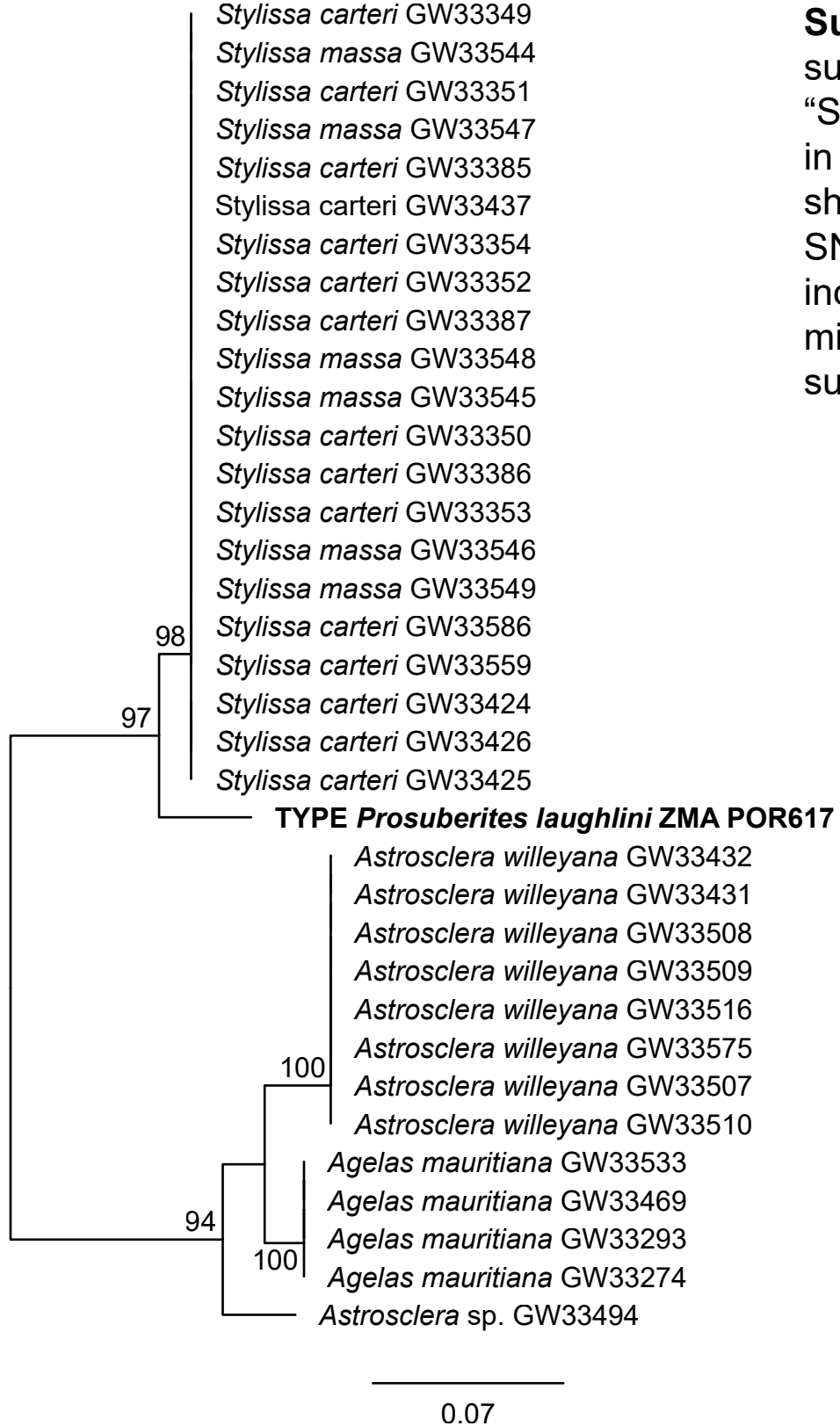
Poecilosclerida

Scopalinida

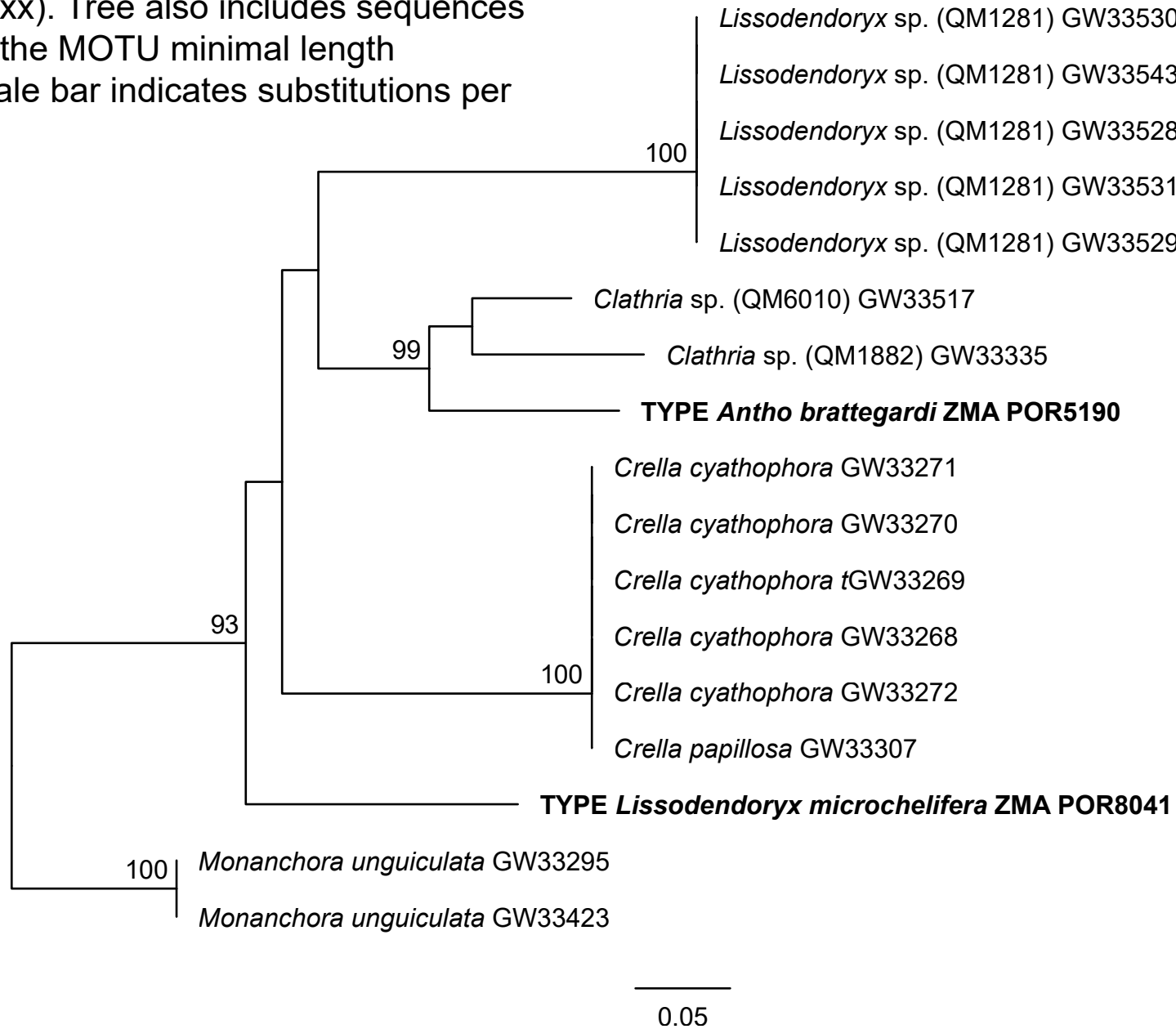
Dictyoceratida



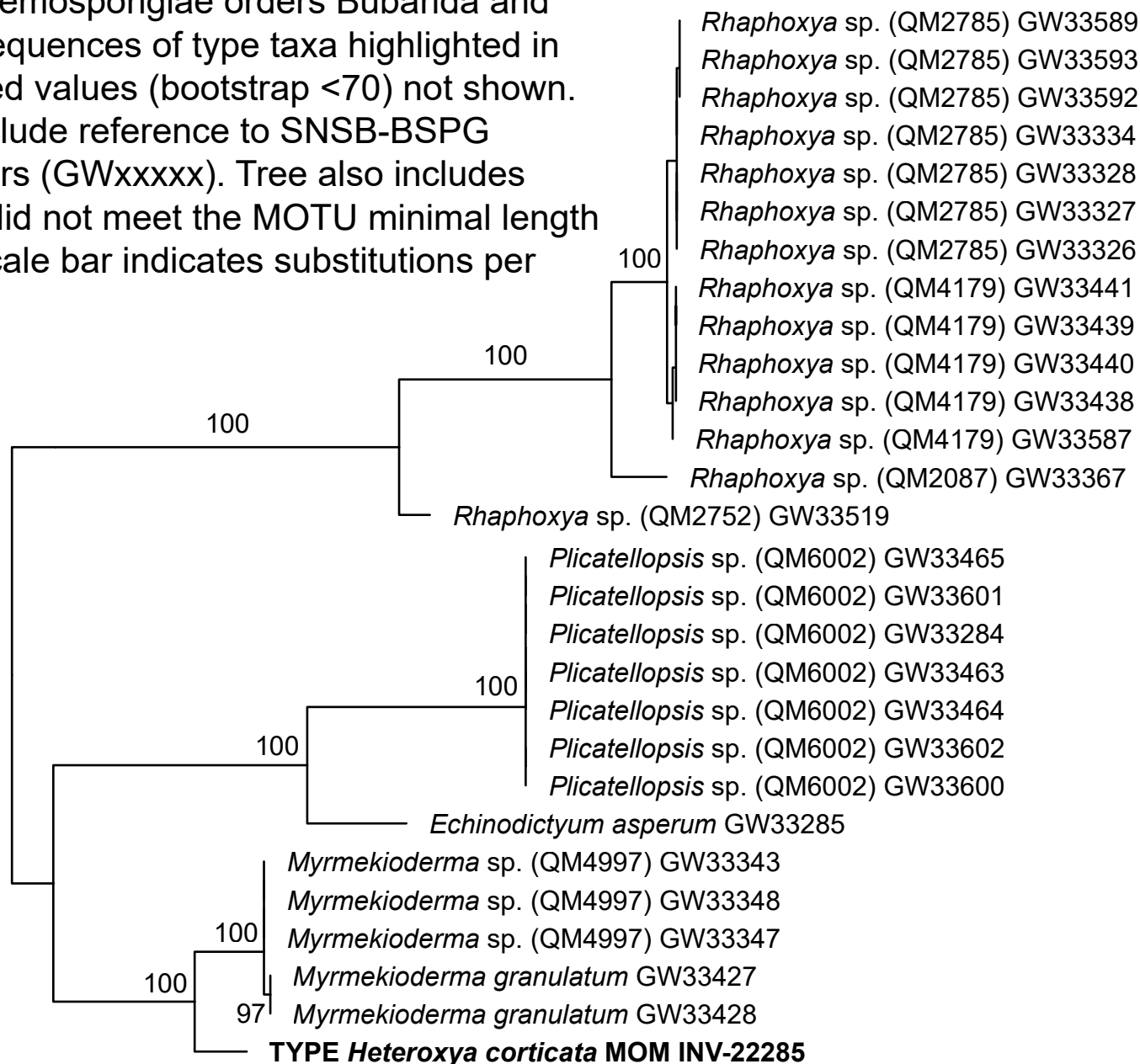
Supplementary Figure S4: 28S Maximum Likelihood subtree for the Demospongiae order Agelasida and “Scopalinida” with sequences of type taxa highlighted in bold. Unsupported values (bootstrap <70) not shown. Taxon names include reference to SNSB-BSPG collection numbers (GWxxxxx). Tree also includes sequences that did not meet the MOTU minimal length requirements. Scale bar indicates substitutions per site.



Supplementary Figure S5: 28S Maximum Likelihood subtree for the Demospongiae order Poecilosclerida with sequences of type taxa highlighted in bold.
 Unsupported values (bootstrap <70) not shown. Taxon names include reference to SNSB-BSPG collection numbers (GWxxxxx). Tree also includes sequences that did not meet the MOTU minimal length requirements. Scale bar indicates substitutions per site.

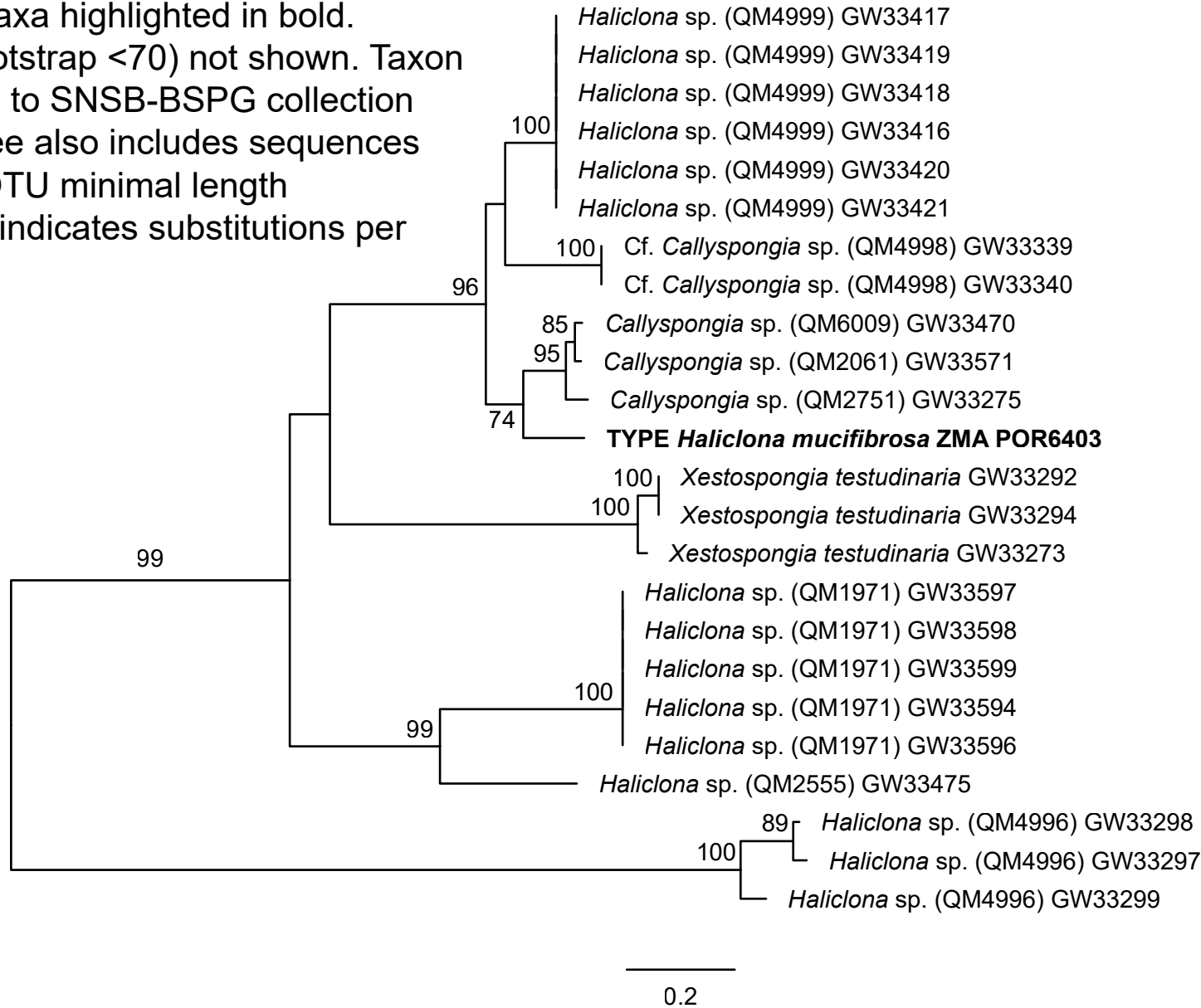


Supplementary Figure S6: 28S Maximum Likelihood
 subtree for the Demospongiae orders Bubarida and
 Axinellida with sequences of type taxa highlighted in
 bold. Unsupported values (bootstrap <70) not shown.
 Taxon names include reference to SNSB-BSPG
 collection numbers (GWxxxxx). Tree also includes
 sequences that did not meet the MOTU minimal length
 requirements. Scale bar indicates substitutions per
 site.

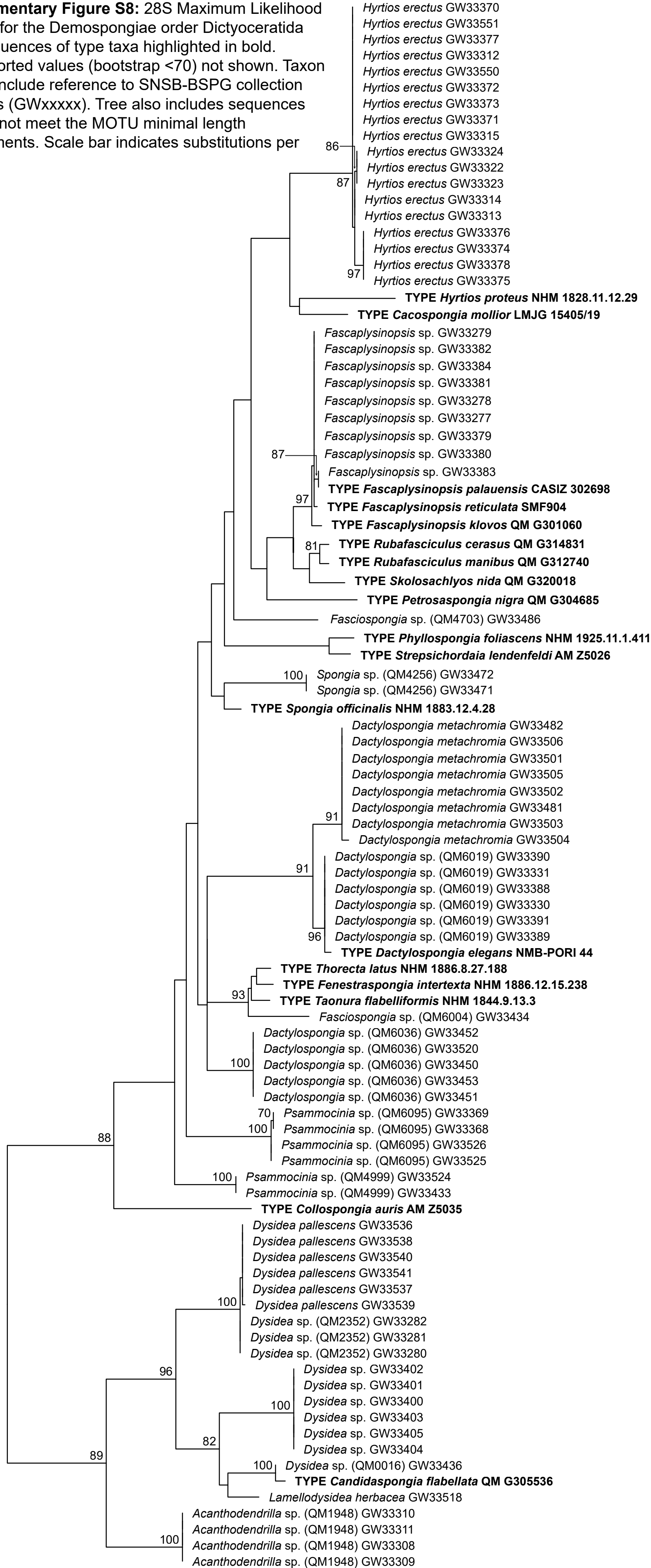


0.2

Supplementary Figure S7: 28S Maximum Likelihood subtree for the Demospongiae order Haplosclerida with sequences of type taxa highlighted in bold. Unsupported values (bootstrap <70) not shown. Taxon names include reference to SNSB-BSPG collection numbers (GWxxxxx). Tree also includes sequences that did not meet the MOTU minimal length requirements. Scale bar indicates substitutions per site.

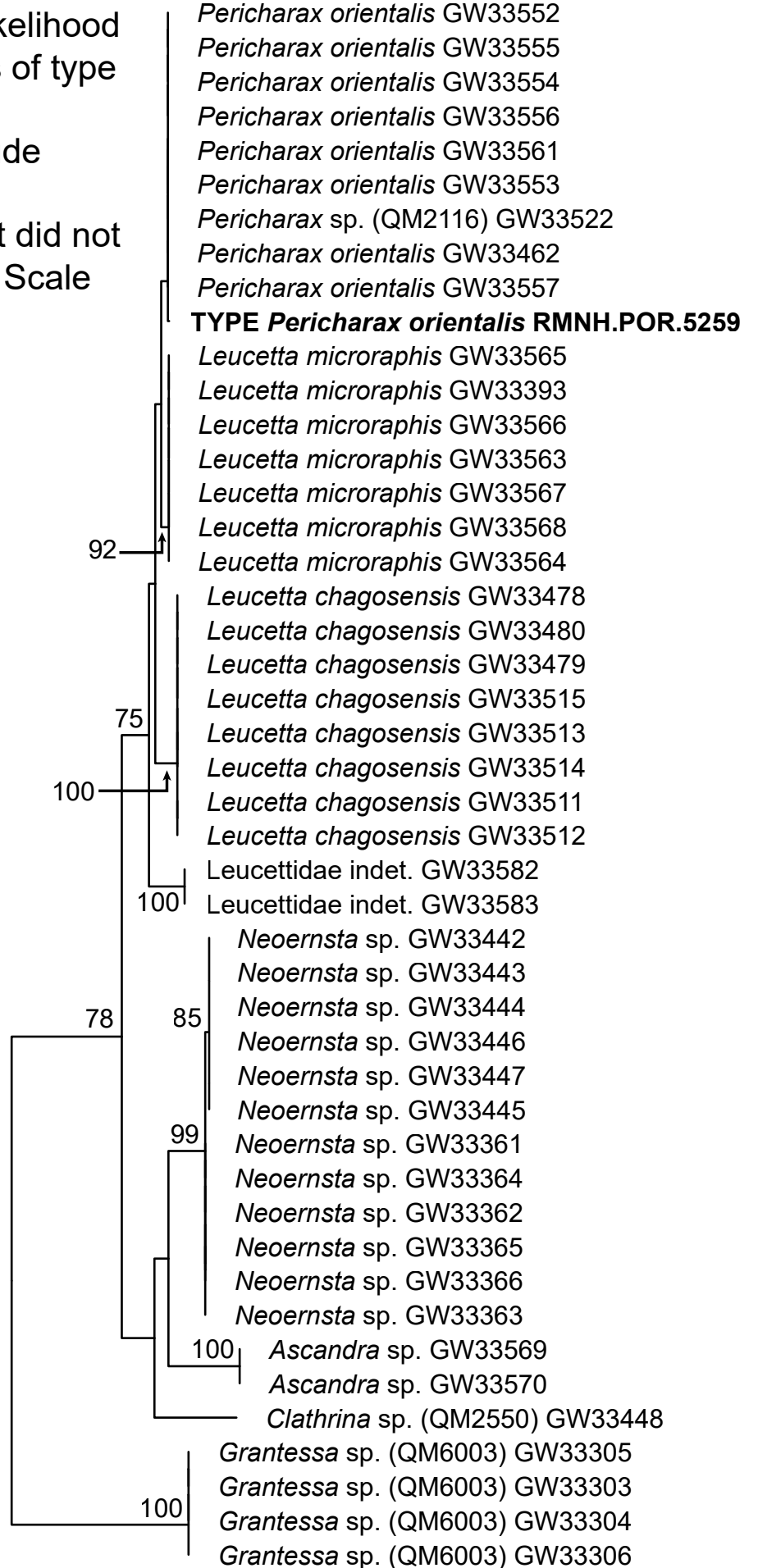


Supplementary Figure S8: 28S Maximum Likelihood subtree for the Demospongiae order Dictyoceratida with sequences of type taxa highlighted in bold. Unsupported values (bootstrap <70) not shown. Taxon names include reference to SNSB-BSPG collection numbers (GWxxxx). Tree also includes sequences that did not meet the MOTU minimal length requirements. Scale bar indicates substitutions per site.

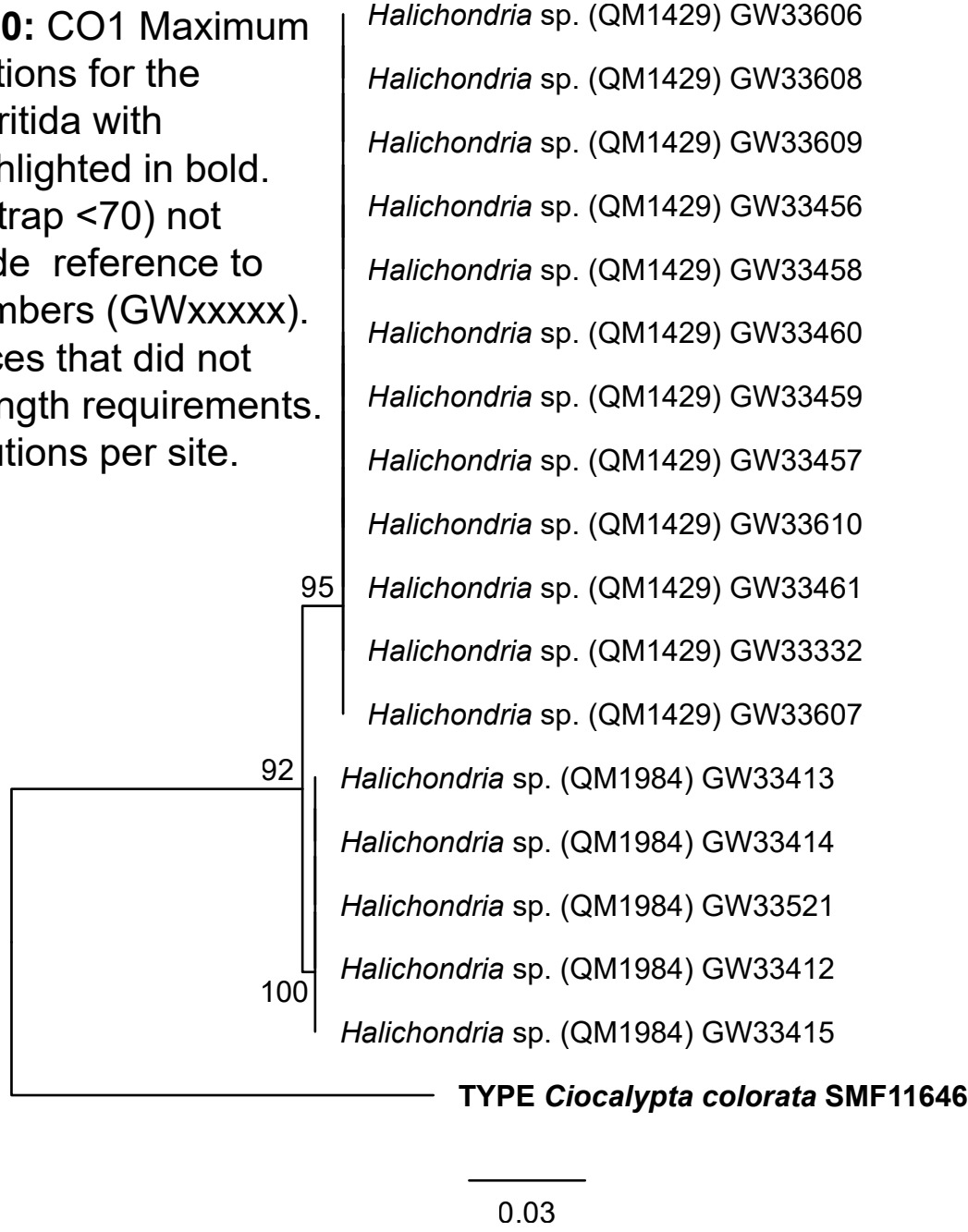


0.06

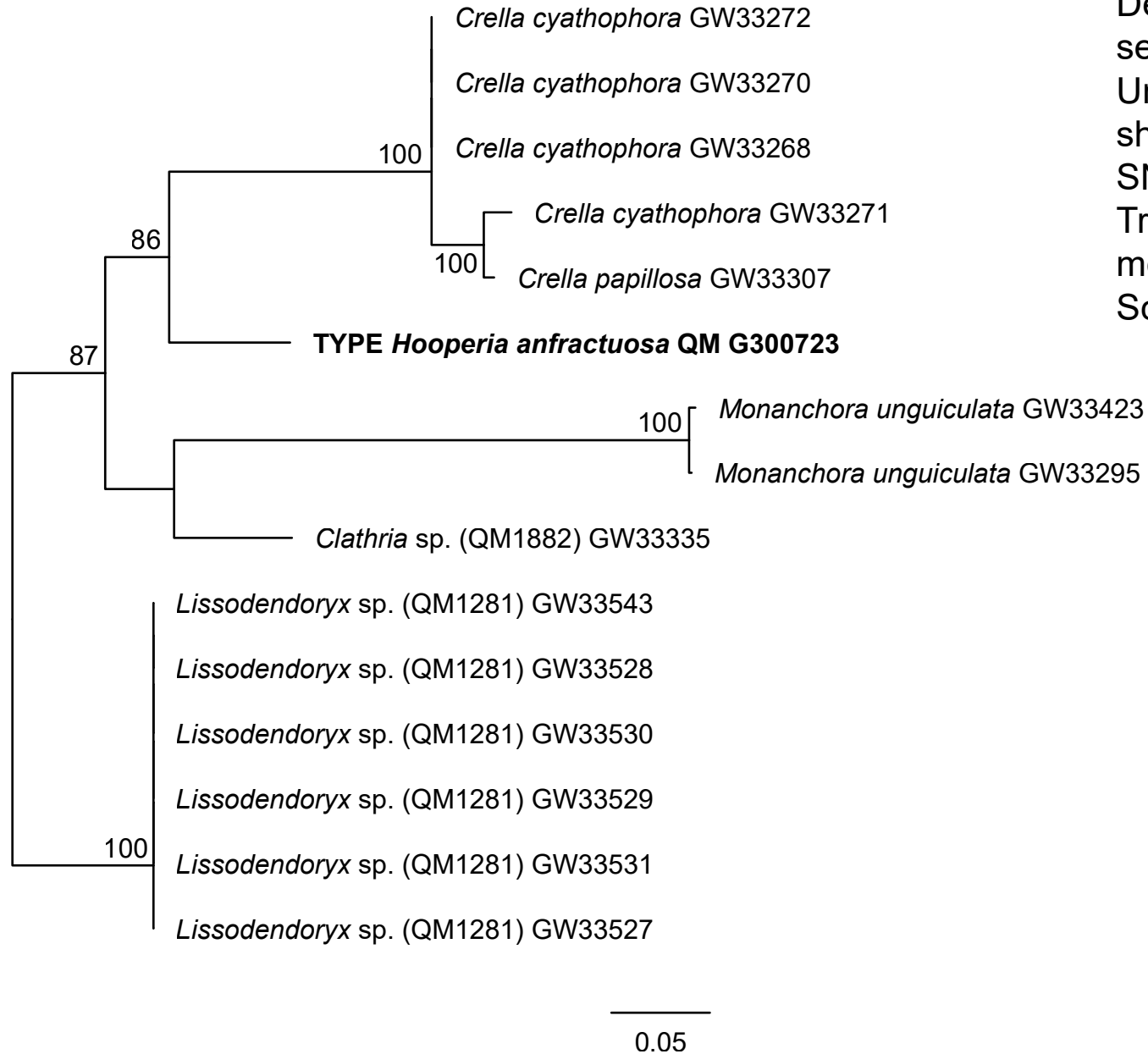
Supplementary Figure S9: 28S Maximum Likelihood subtree for the class Calcarea with sequences of type taxa highlighted in bold. Unsupported values (bootstrap <70) not shown. Taxon names include reference to SNSB-BSPG collection numbers (GWxxxxx). Tree also includes sequences that did not meet the MOTU minimal length requirements. Scale bar indicates substitutions per site.



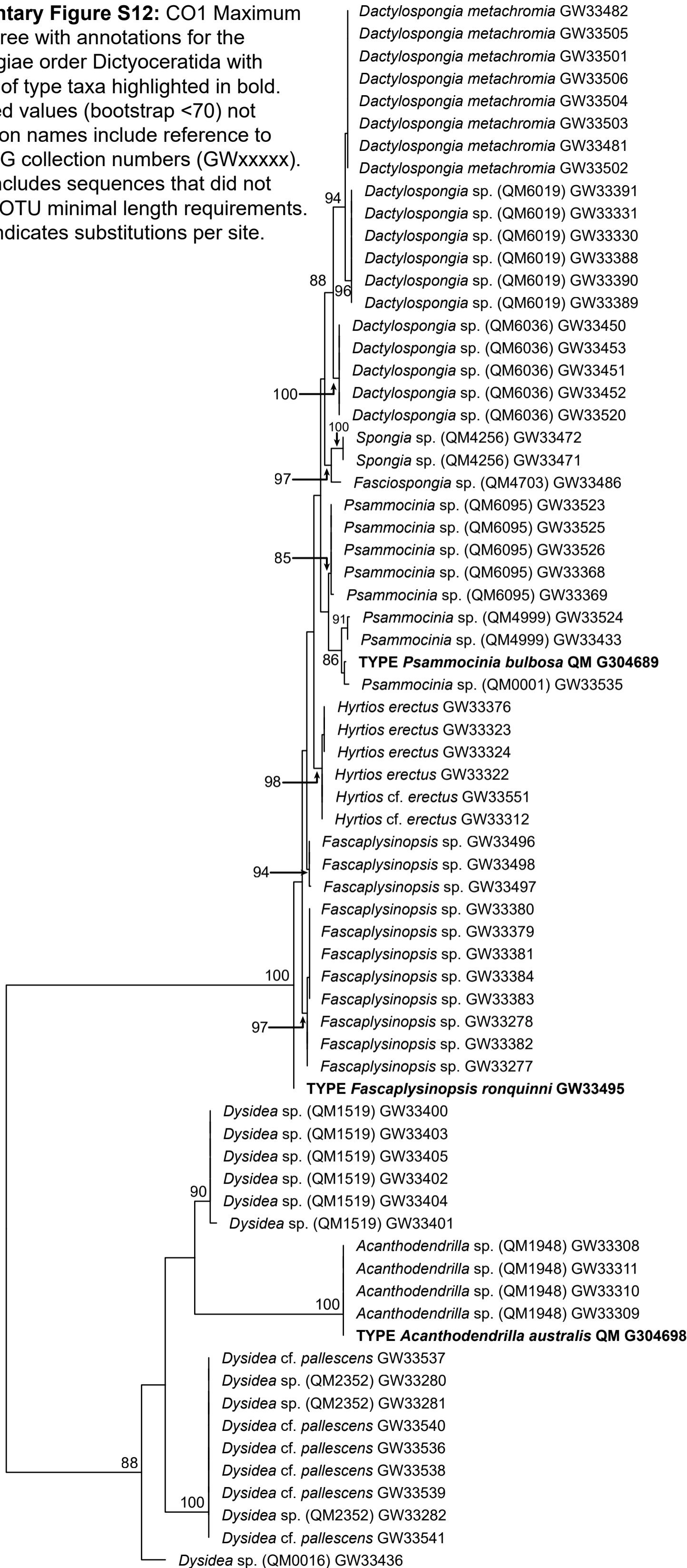
Supplementary Figure S10: CO1 Maximum Likelihood tree with annotations for the Demospongiae order Suberitida with sequences of type taxa highlighted in bold. Unsupported values (bootstrap <70) not shown. Taxon names include reference to SNSB-BSPG collection numbers (GWxxxxx). Tree also includes sequences that did not meet the MOTU minimal length requirements. Scale bar indicates substitutions per site.



Supplementary Figure S11: CO1 Maximum Likelihood tree with annotations for the Demospongiae order Poecilosclerida with sequences of type taxa highlighted in bold. Unsupported values (bootstrap <70) not shown. Taxon names include reference to SNSB-BSPG collection numbers (GWxxxxx). Tree also includes sequences that did not meet the MOTU minimal length requirements. Scale bar indicates substitutions per site.



Supplementary Figure S12: CO1 Maximum Likelihood tree with annotations for the Demospongiae order Dictyoceratida with sequences of type taxa highlighted in bold. Unsupported values (bootstrap <70) not shown. Taxon names include reference to SNSB-BSPG collection numbers (GWxxxxx). Tree also includes sequences that did not meet the MOTU minimal length requirements. Scale bar indicates substitutions per site.



0.08