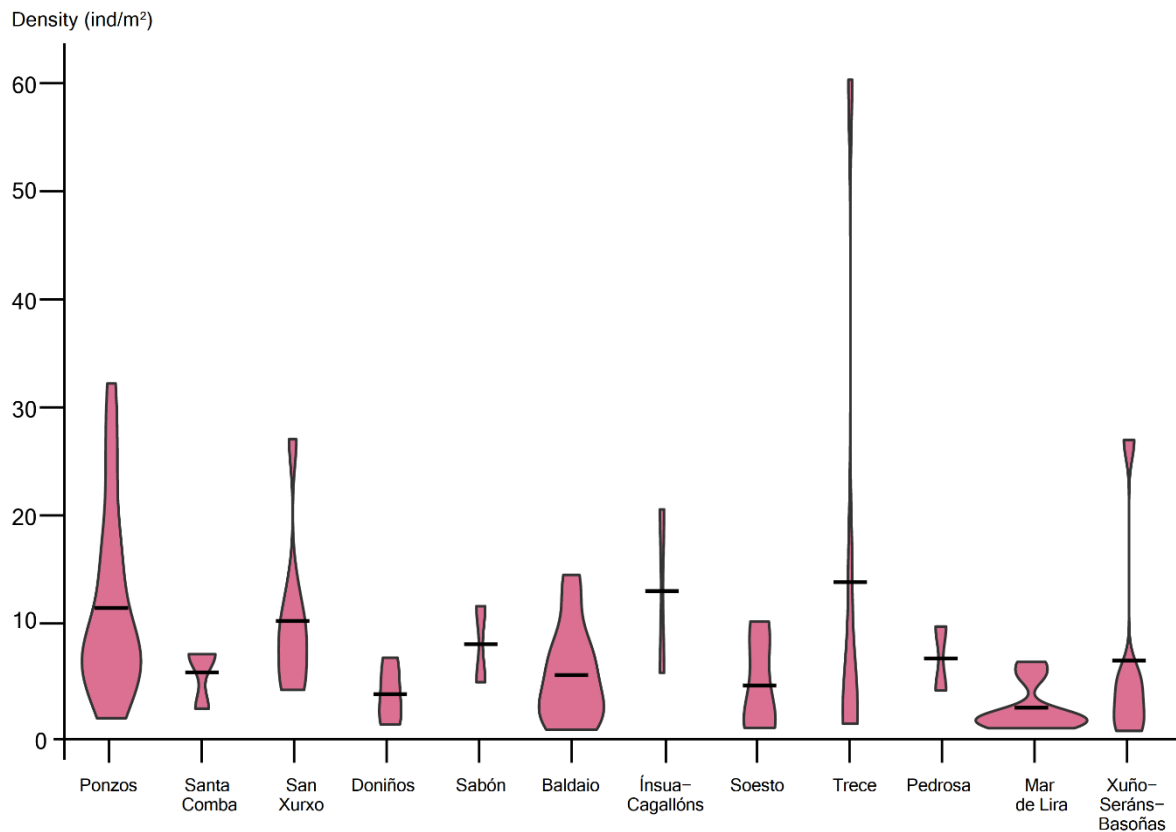


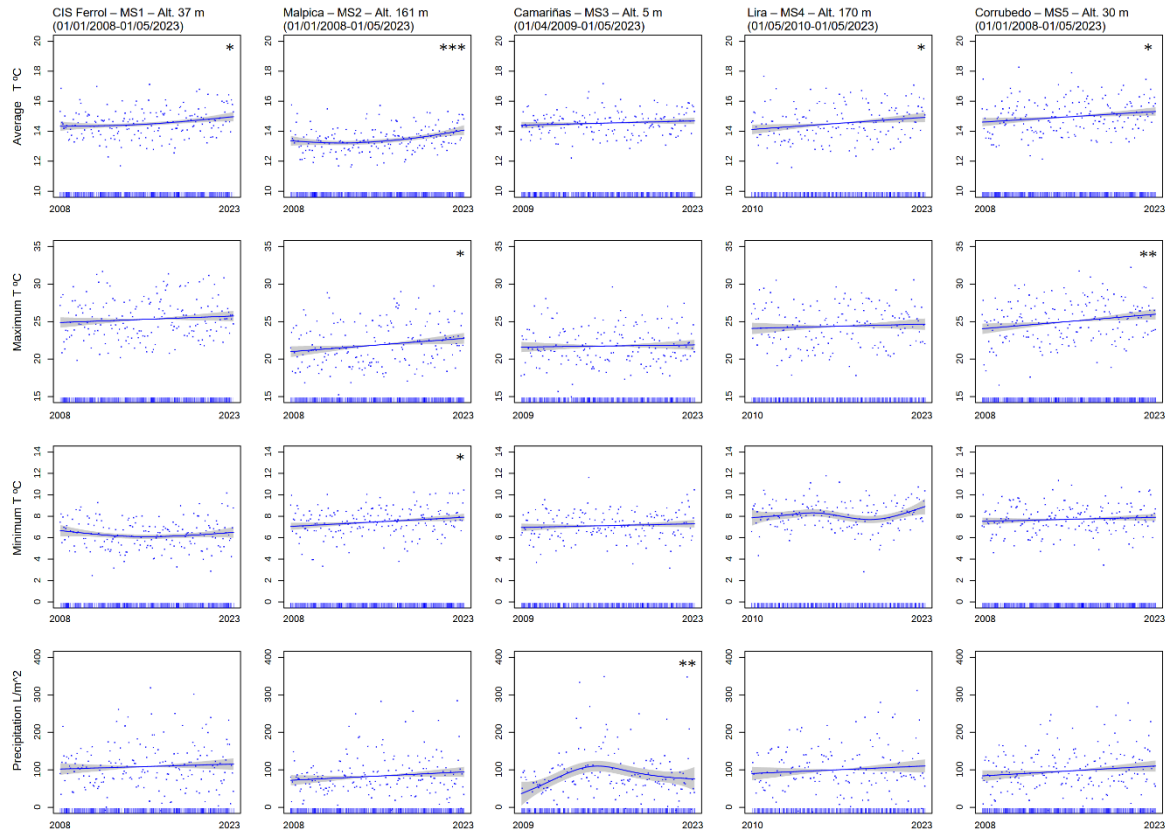
# A narrow endemic plant: evaluating population dynamics and conservation strategies

NEREA ALVITE, ELISA GAGO MOLDES, SERGIO ROILoa and RODOLFO BARREIRO

Supplementary material is published as supplied by the authors. It is not checked for accuracy, copyedited, typeset or proofread. The responsibility for scientific accuracy and file functionality remains with the authors.



SUPPLEMENTARY FIG. 1. Densities (ind/m<sup>2</sup>) of populations at each location. The width of each bar represents the number of patches displaying that density. The black line represents the mean density for each location.



SUPPLEMENTARY FIG. 2. Trends in monthly average, maximum and minimum temperature ( $^{\circ}\text{C}$ ), and monthly precipitation ( $\text{L}/\text{m}^2$ ) for the period between the two available censuses for the species at Meteorological Stations (MS) near *Iberodes littoralis* subsp. *gallaecica* locations (Xunta de Galicia, 2023). Trends are calculated using a *gam*, allowing the elimination of the seasonal effect from the data. Significant differences are indicated by \*\*\*  $p < 0.001$ ; \*\*  $p < 0.01$ ; \*  $p < 0.05$ .