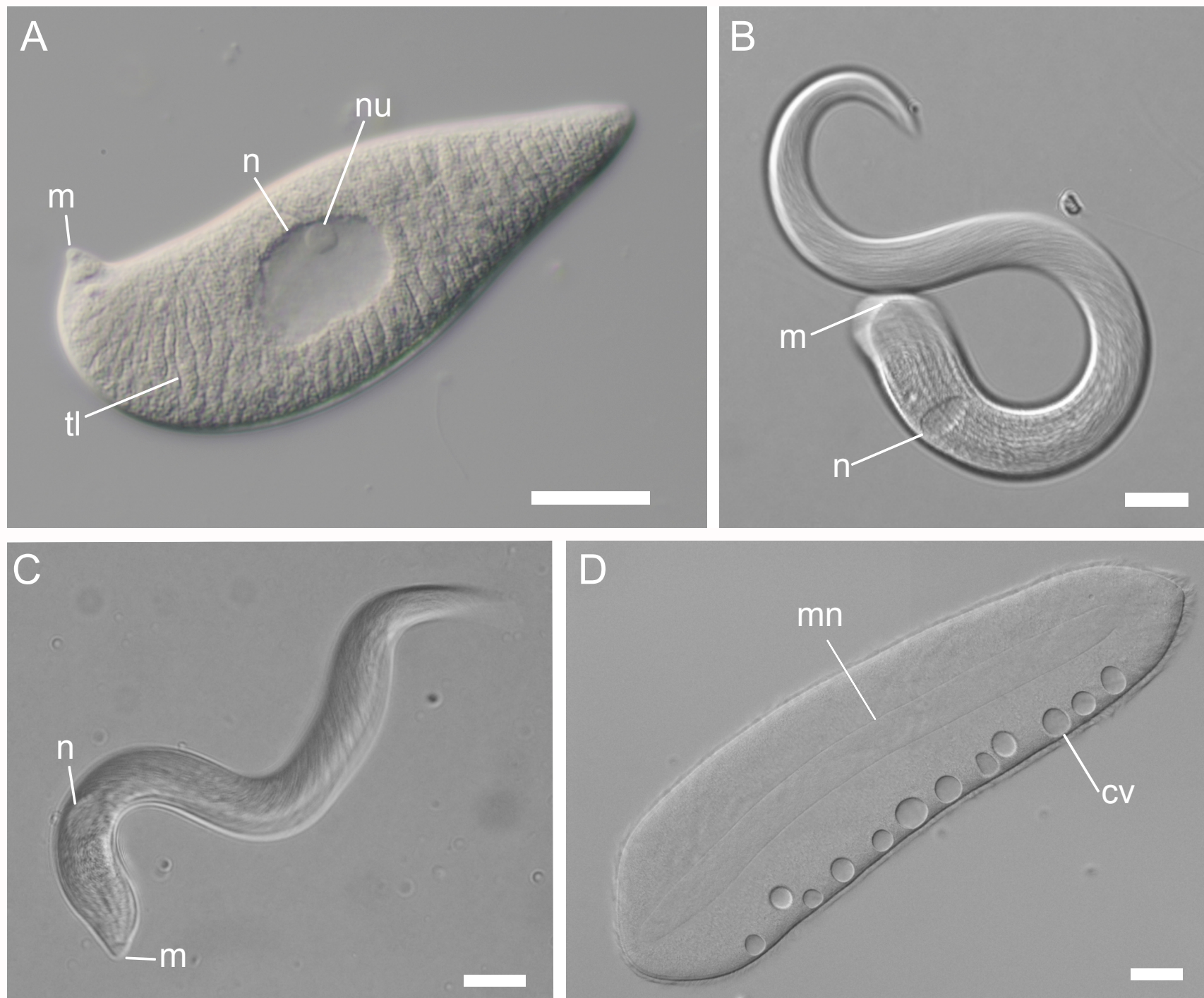
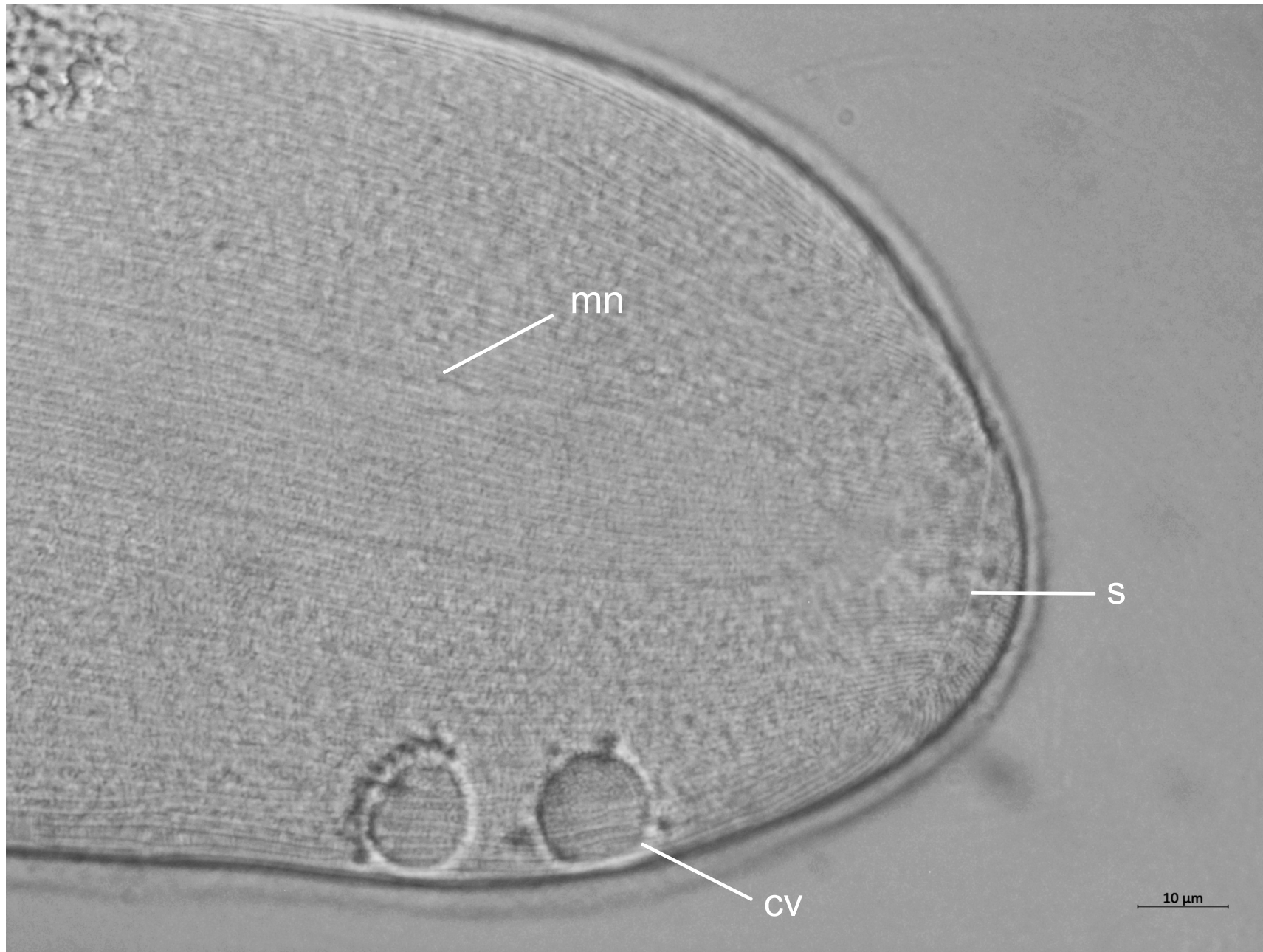


**Supplementary figure 1.**



**Differential interference contrast (DIC) light micrographs of *Selenidium* and *Penarella*.** A: *Selenidium* cf. *mesnili* (scale bar = 5  $\mu$ m). B and C: *Selenidium elongatum* n. sp. (scale bar = 20  $\mu$ m). D: *Pennarella elegantia* n. gen. et sp. (scale bar = 20  $\mu$ m). Labels: n, nucleus; m, mucron; tl, transverse lines; mn, macronucleus; cv, contractile vacuoles.

Supplementary figure 2.



A differential interference contrast (DIC) light micrograph of *Penarella elegantia* n. gen. et sp. The anterior end is shown. mn: macronucleus, cv: contractile vacuoles, s; suture