

Figure S1: Artist's rendering of ventral side of *Nuttalliella odyssea* sp. nov., fossil collection no. B-4863. Ronel Pienaar.

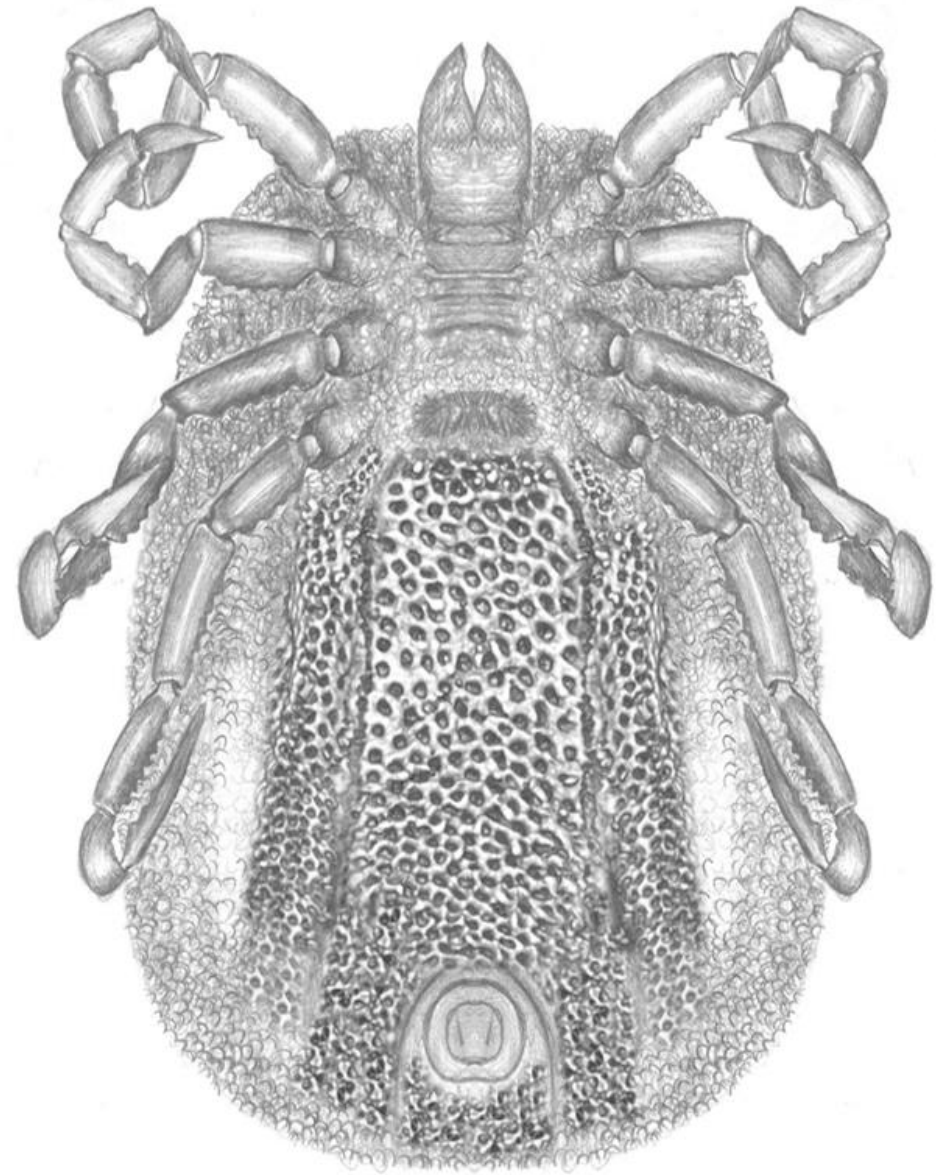
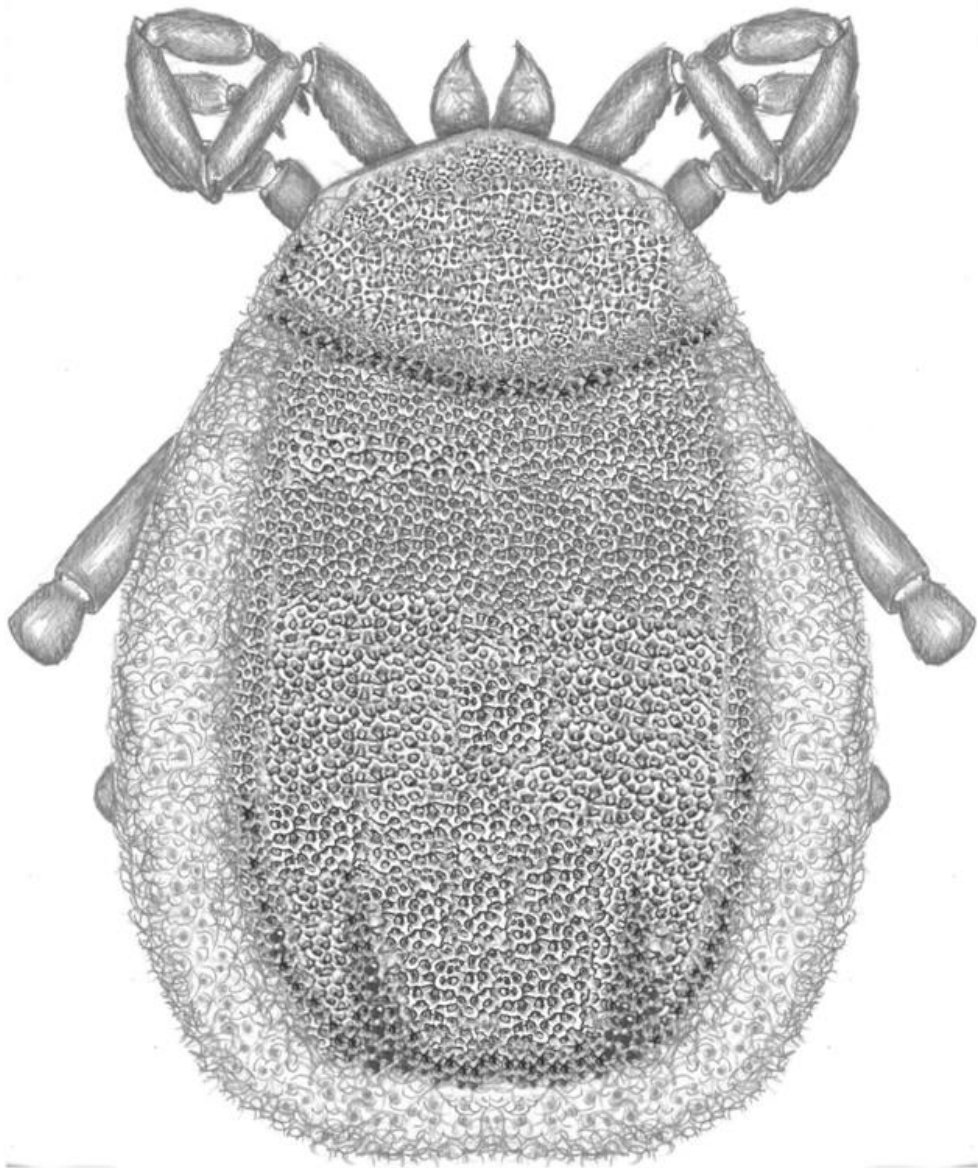


Figure 2S: Artist rendering of the male *Nuttalliella placaventrala* sp. nov., B-4862. Ronel Pienaar.

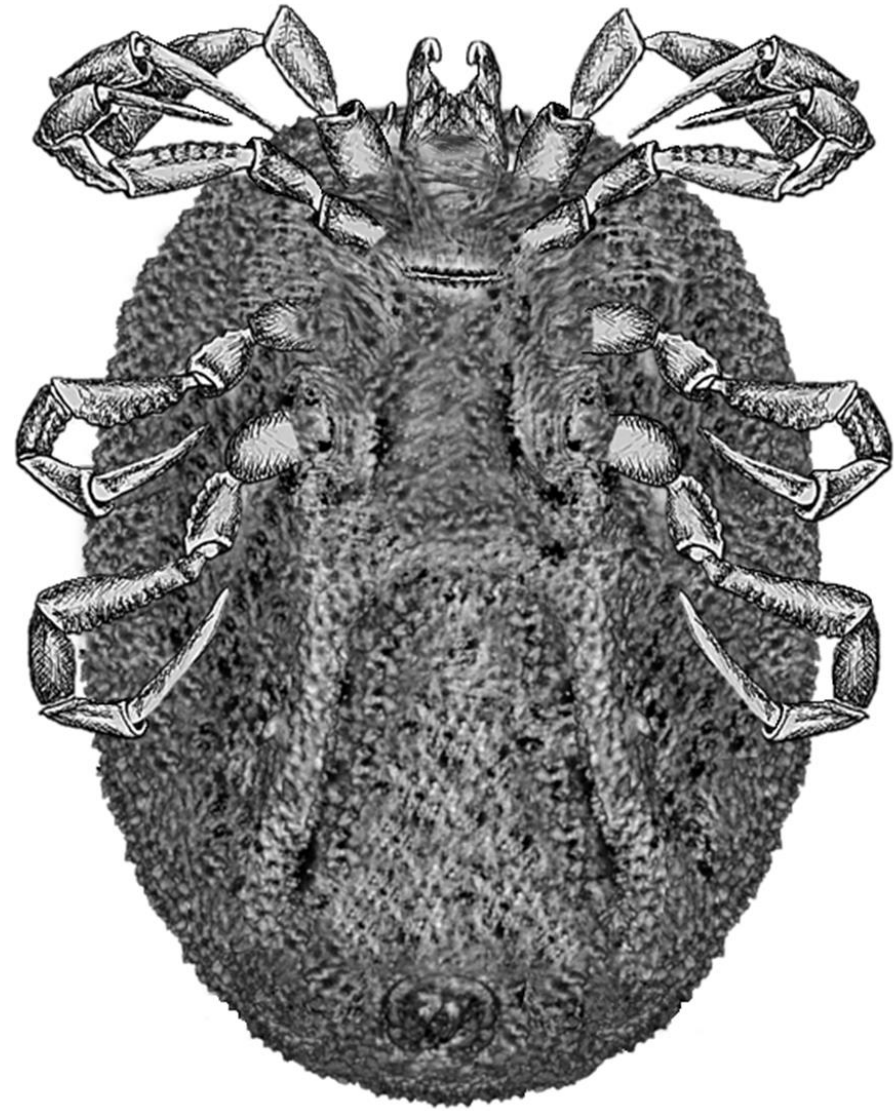
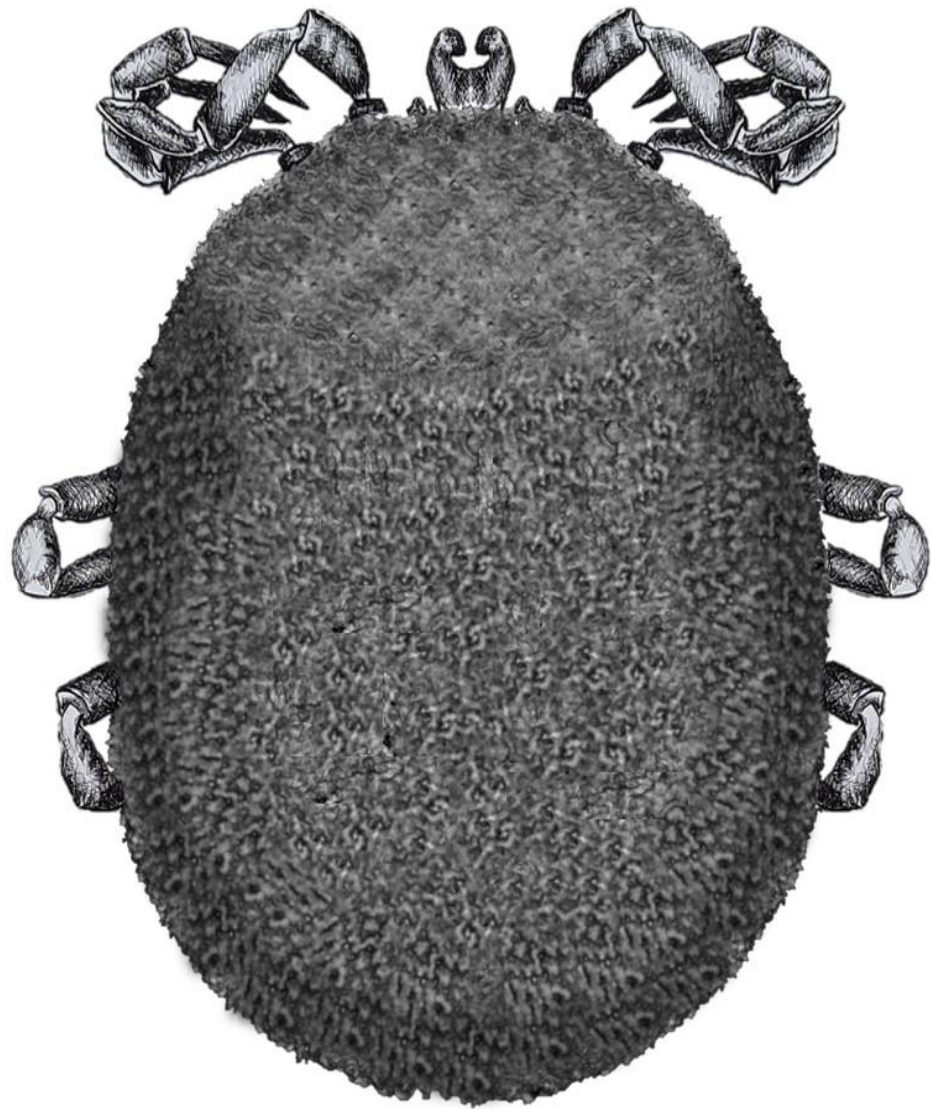


Figure S3: Artist's rendering of ventral side of *Nuttalliella tropicasylvae* sp. nov., fossil collection no. B-4863. Ronel Pienaar.

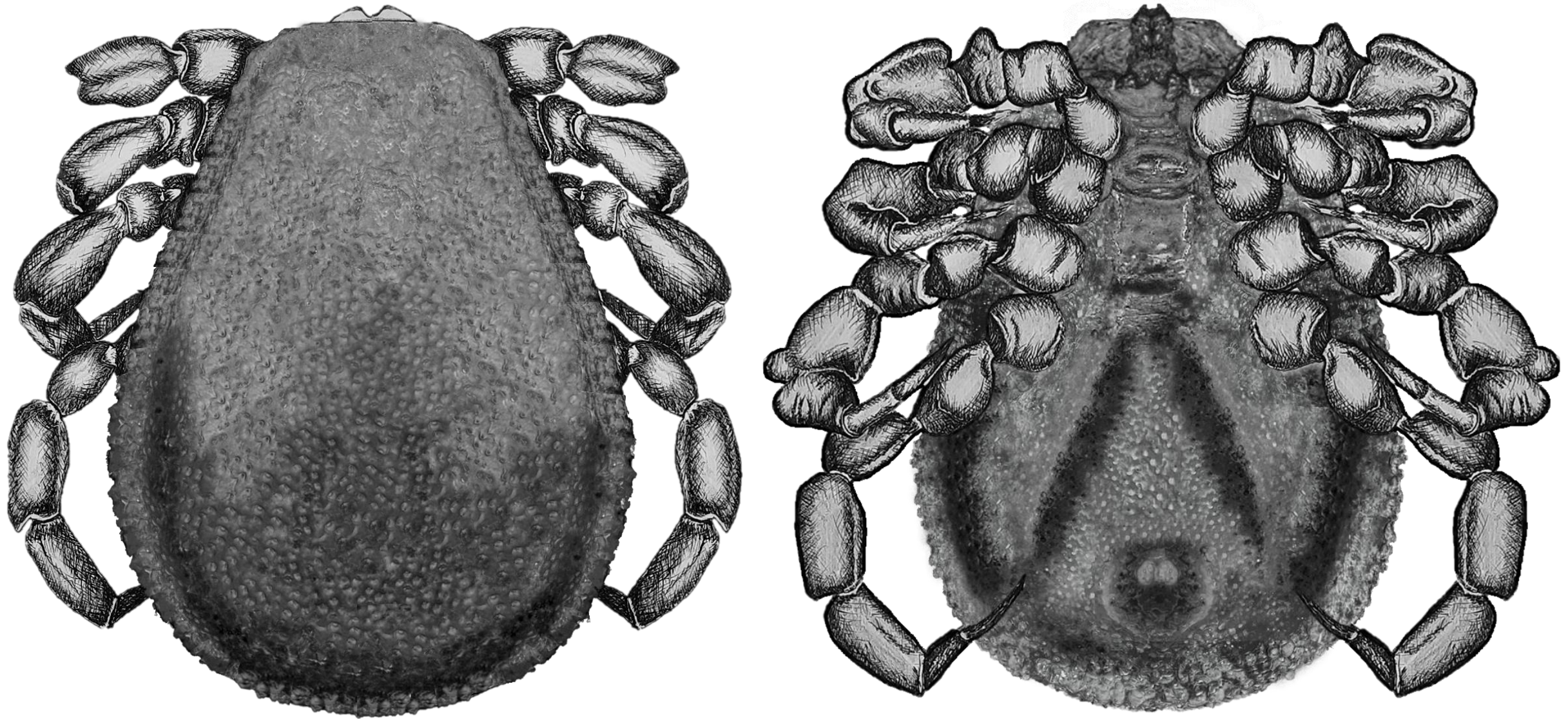


Figure S4: Artist's rendering of ventral side of *Legionaris robustus* sp. nov., collection no. B-4891. Ronel Pienaar.

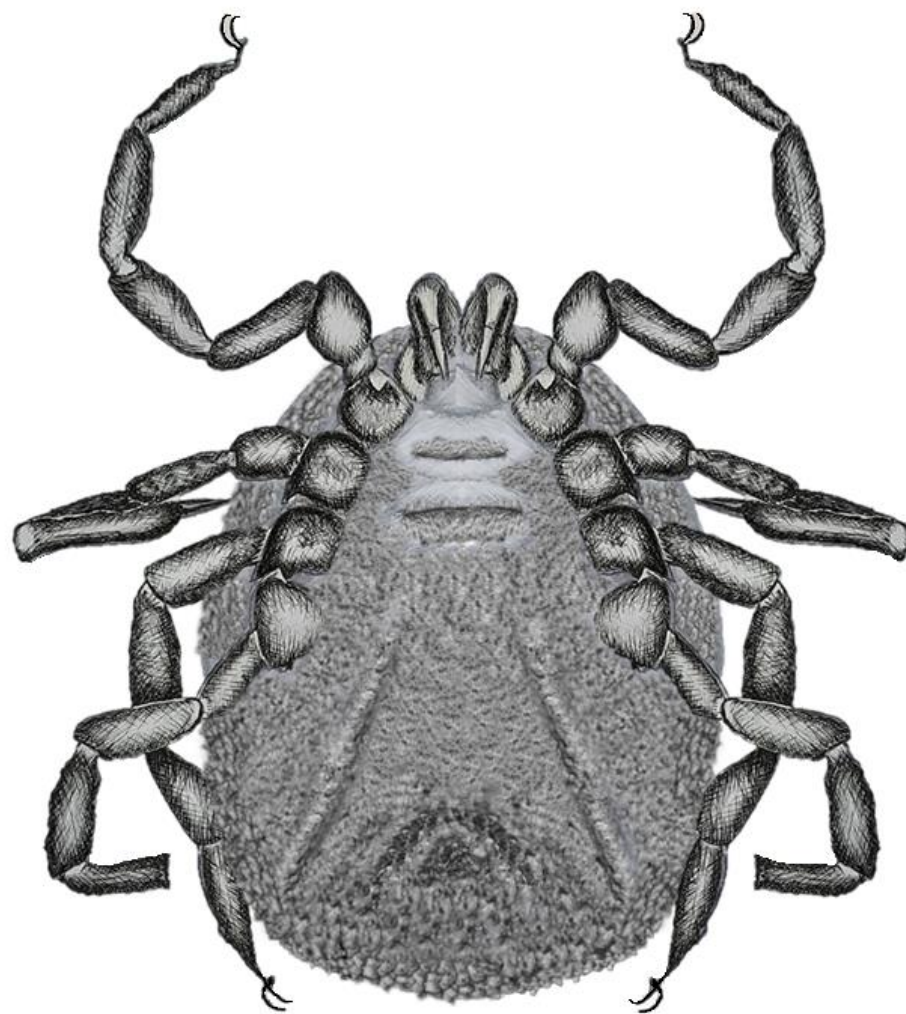
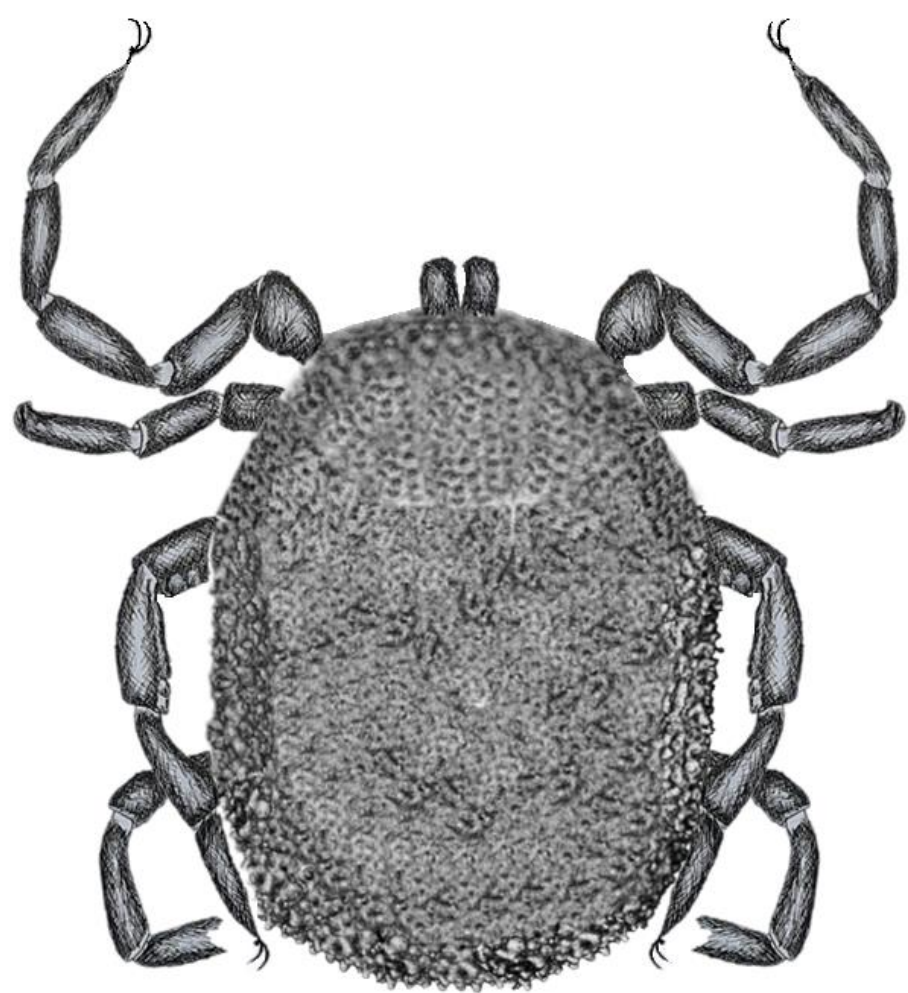


Figure S5: Artist's rendering of ventral side of *Deinocroton bicornis* sp. nov., collection no. B-4839. Ronel Pienaar©.

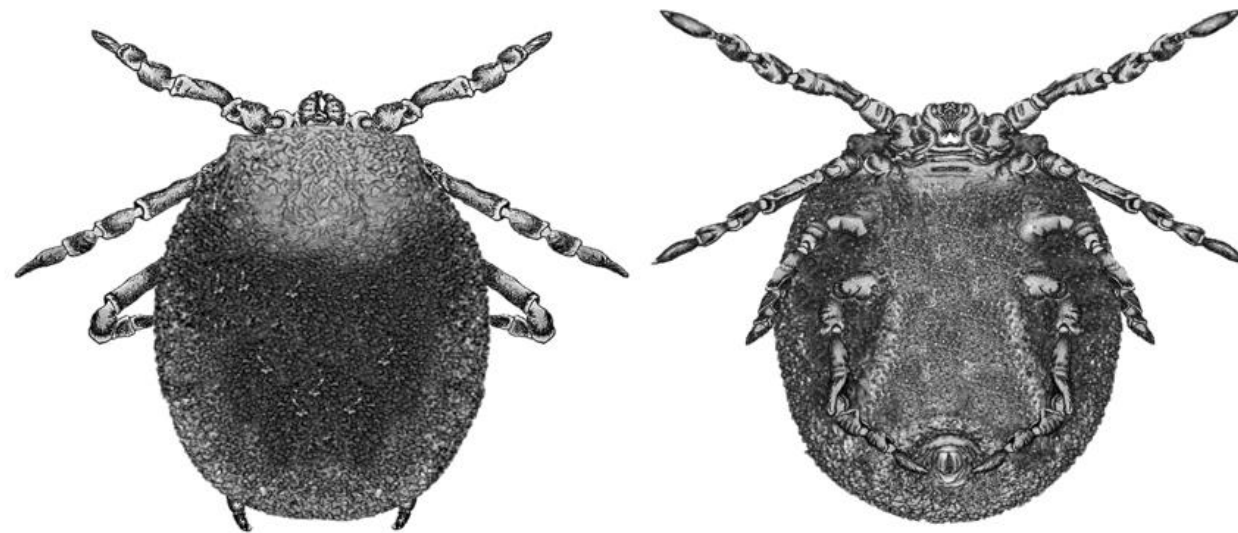
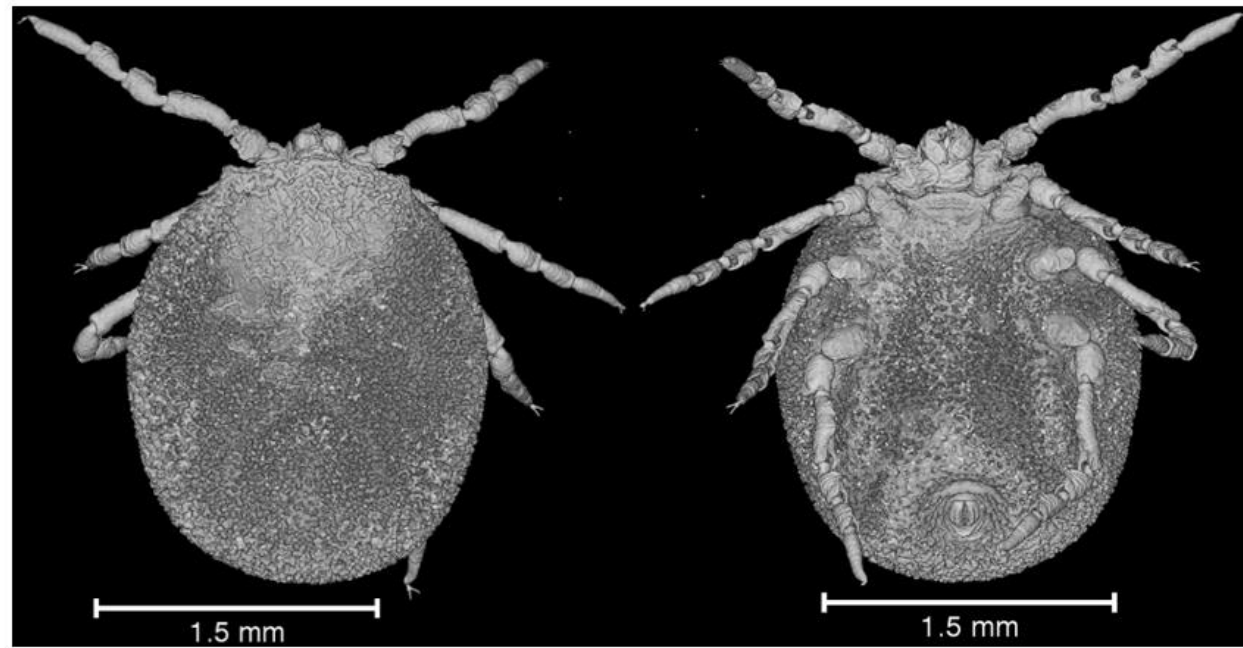


Figure S6: Extant *Nuttalliella namaqua*. Indicated in the top panel are micro-CT scans of the dorsal and ventral views of a female *N. namaqua* as well as an artist depiction of the same features to allow comparison with similar images of fossil specimens.