

Supplementary Materials for

**On the effects of the timing of an intense cyclone on
summertime sea ice evolution in the Arctic**

Zhongxiang Tian^a, Xi Liang^a, Fu Zhao^a, Na Liu^a, Ming Li^a, Chunhua Li^a

^a *Key Laboratory of Marine Hazards Forecasting, National Marine Environmental
Forecasting Center, Ministry of Natural Resources, Beijing, China*

Corresponding author: Xi Liang (liangx@nmefc.cn)

Contents of this file

Figure S1

Introduction

The supporting information provides the cyclone component of the mean 2 m air temperature and 2 m specific humidity during the life of the cyclone.

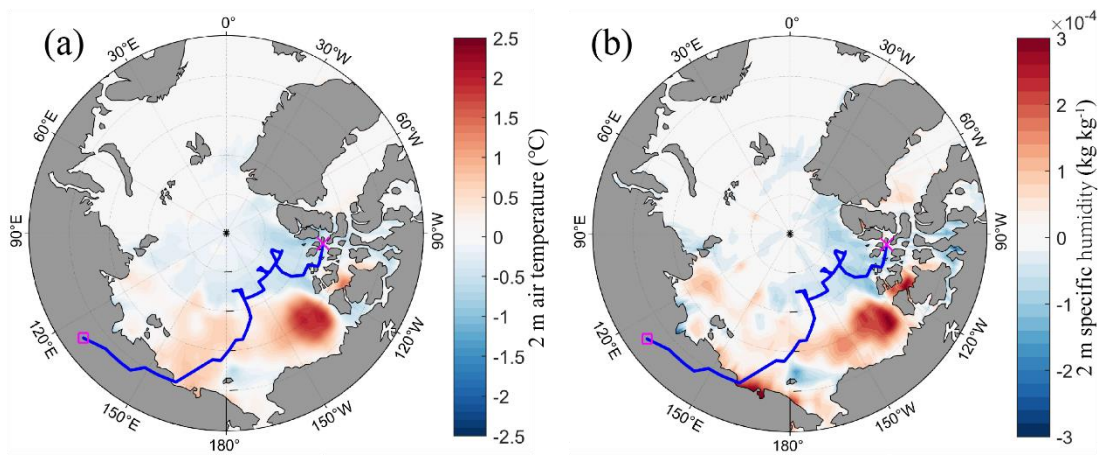


Figure S1. Cyclone component of the mean (a) 2 m air temperature and (b) 2 m specific humidity during the life of the cyclone. Blue lines denote the cyclone's trajectory between 00UTC 4 August and 00UTC 13 August. Magenta square and 'x' represent the central positions of the cyclone at 00UTC 4 August and 00UTC 13 August, respectively.