

Clinical Pathways of Acute Myeloid Leukemia (AML) Patients at IPO-Lisboa

From interviews with Physicians from the Hematology department of IPO-Lisboa

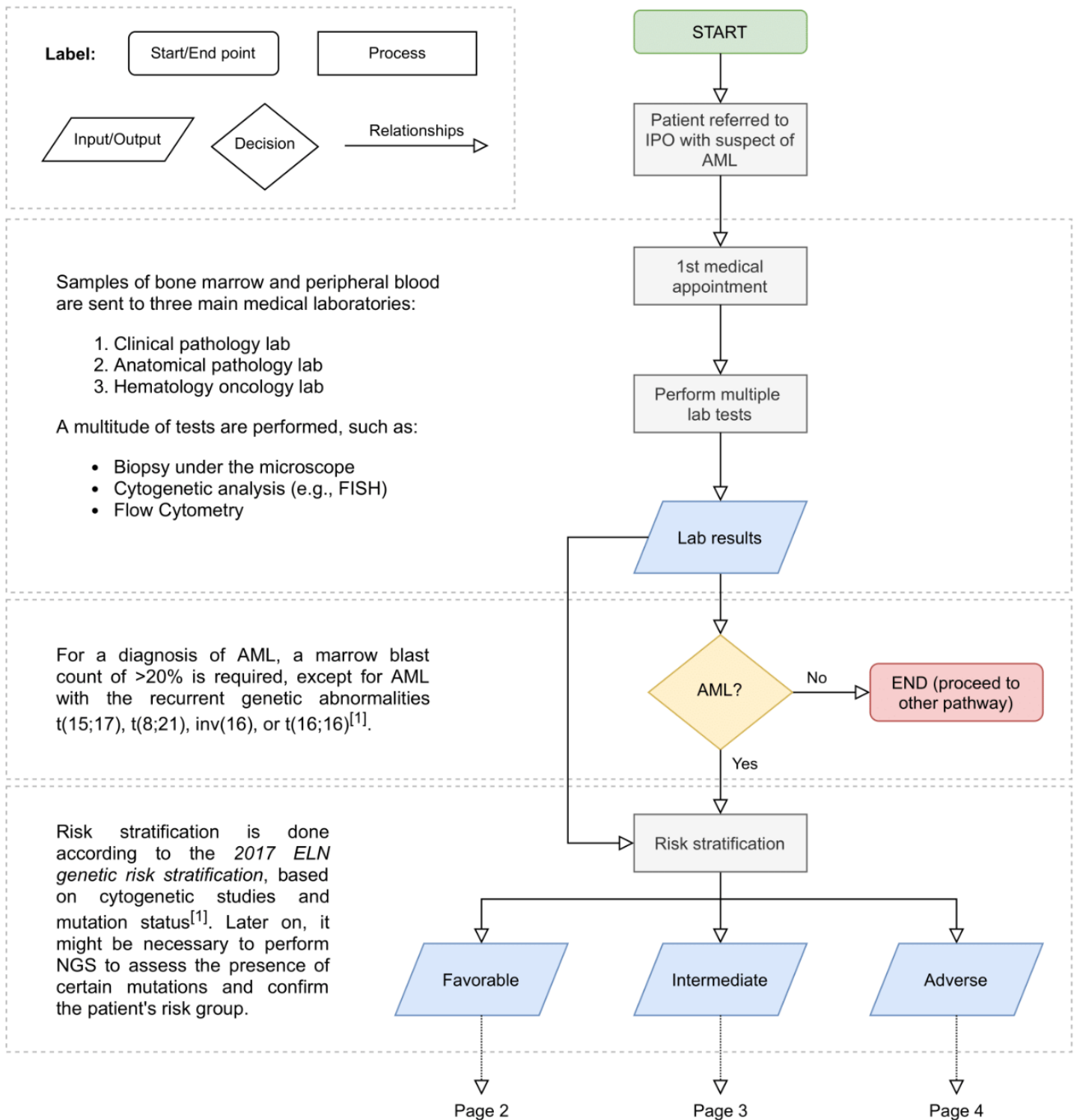


Figure 1. Flowchart of the simplified clinical pathway of Acute Myeloid Leukemia (AML) patients at IPO-Lisboa, up until risk stratification.

[1] Döhner et al., (2017). Diagnosis and management of AML in adults: 2017 ELN recommendations from an international expert panel. Blood, 129(4), 424-447. doi:10.1182/blood-2016-08-733196

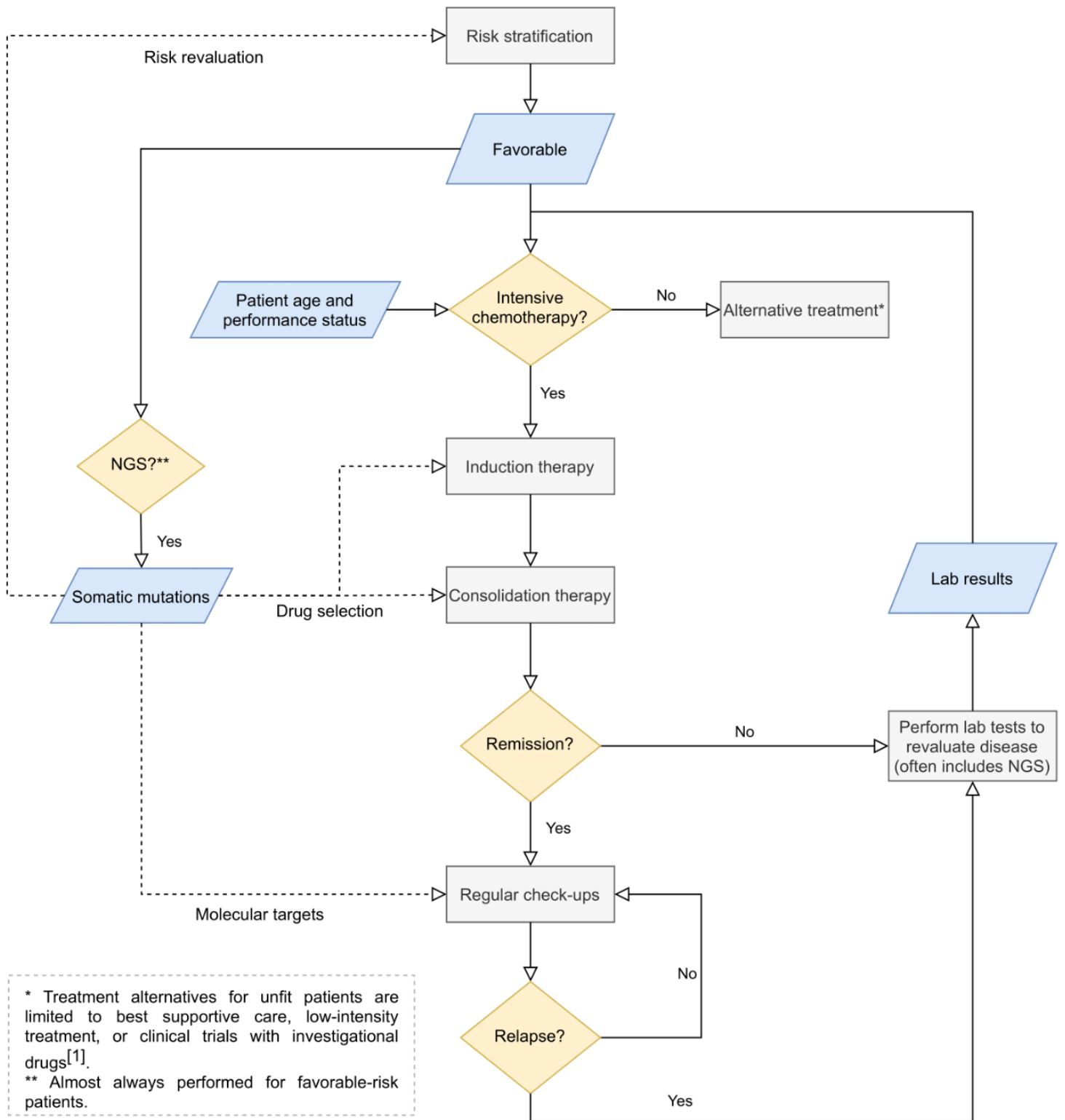


Figure 2. Flowchart of the simplified clinical pathway of Acute Myeloid Leukemia (AML) favorable-risk patients at IPO-Lisboa.

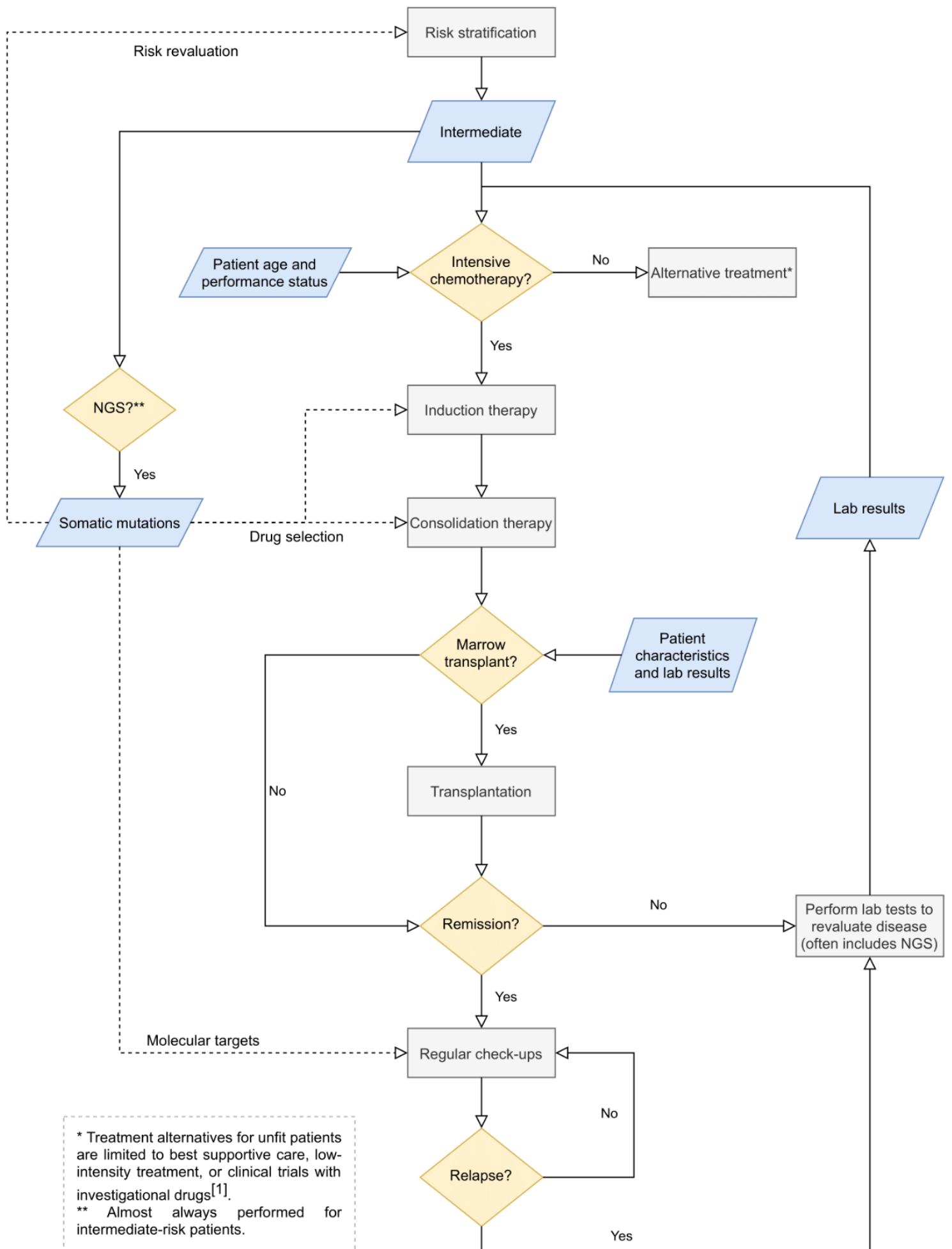


Figure 3. Flowchart of the simplified clinical pathway of Acute Myeloid Leukemia (AML) intermediate-risk patients at IPO-Lisboa.

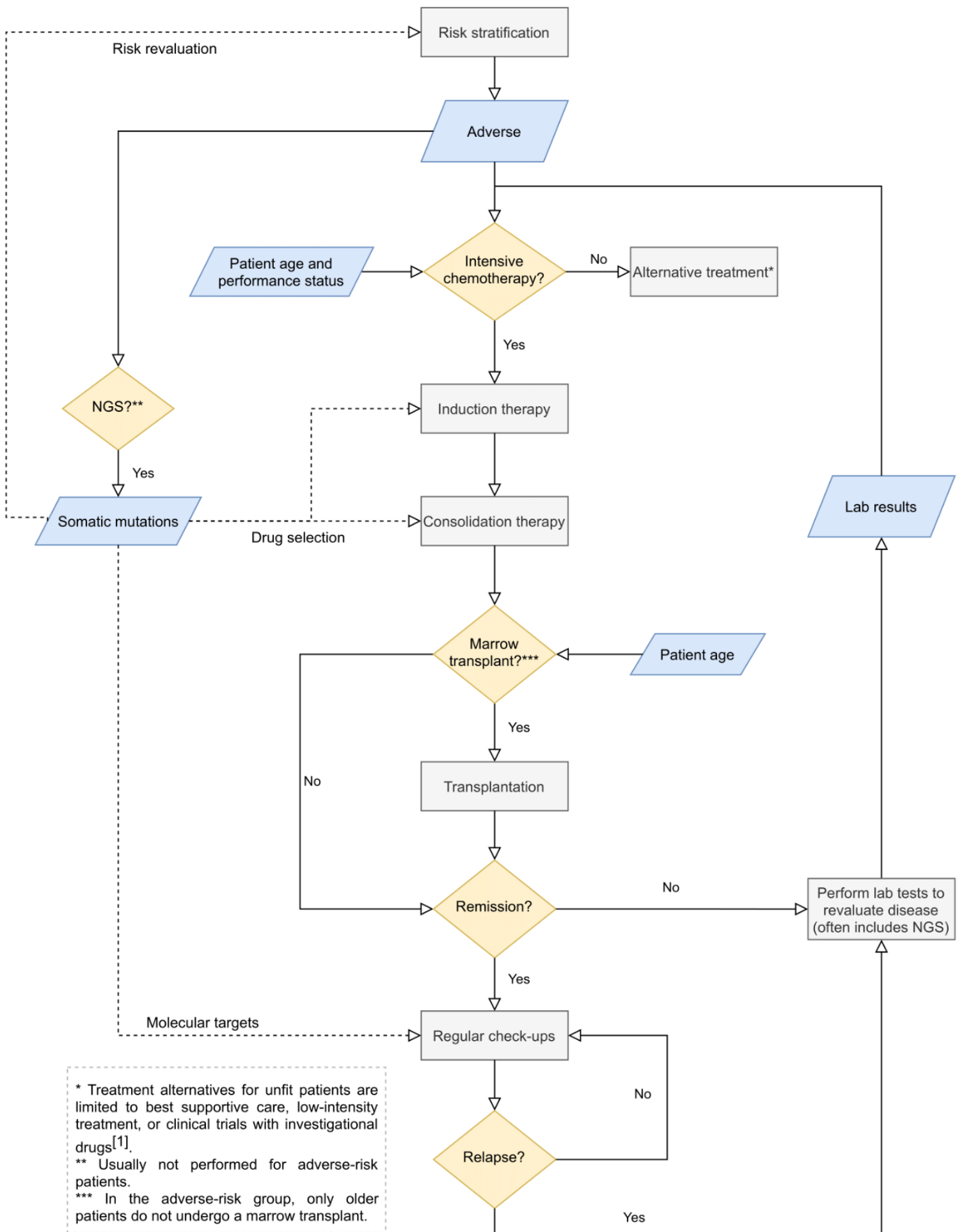


Figure 4. Flowchart of the simplified clinical pathway of Acute Myeloid Leukemia (AML) adverse-risk patients at IPO-Lisboa.