

Figure S8: Forest plot of comparisons against TAU in Grp1

The comparisons within the mild depression subgroup are shown in (a), within the moderate depression subgroup are shown in (b), within the severe depression subgroup are shown in (c)

SMD = a standardized mean difference of a pairwise comparison in network-meta-analysis between a treatment and TAU. 95% CI = 95% confidence interval

A horizontal line represents a 95% CI and a point on the line represents SMD. The bottom scale represents SMD. SMD < 0 means that a treatment can be more effective than TAU. If the 95% CI does not cover 0, the estimate is statistically significant.

Grp1: a group 1, in which we did not distinguish between psychotherapy alone and psychotherapy combined with medication.

BA = behavioral activation CBT (fft) = individual face-to-face cognitive behavioral therapy, DYN = psychoanalytic/psychodynamic psychotherapy, gCBT = group cognitive behavioral therapy, iCBT = computerized- or internet cognitive behavioral therapy, IPT = interpersonal psychotherapy, TAU = treatment-as-usual, WLC = wait list control

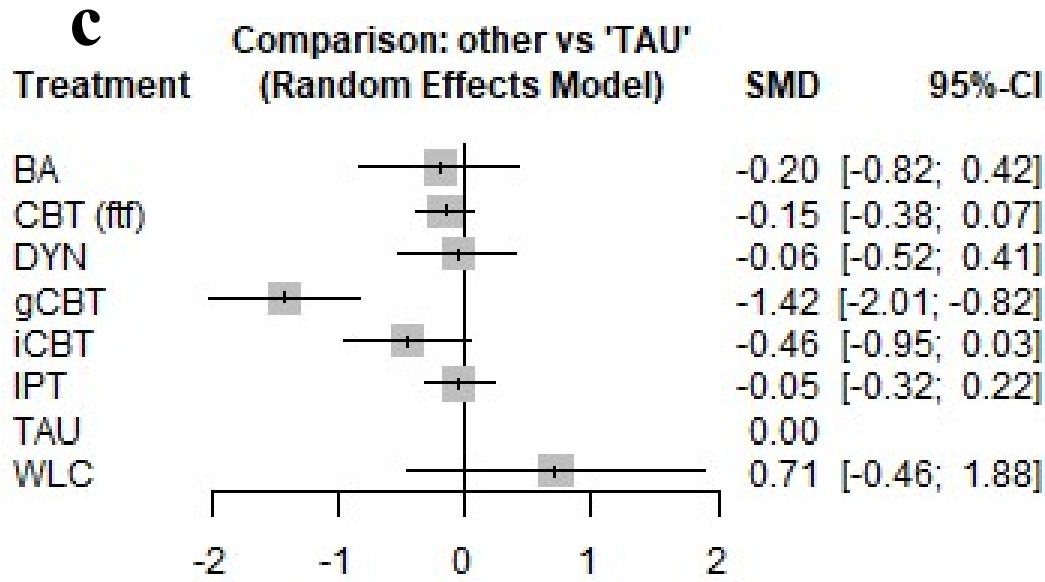
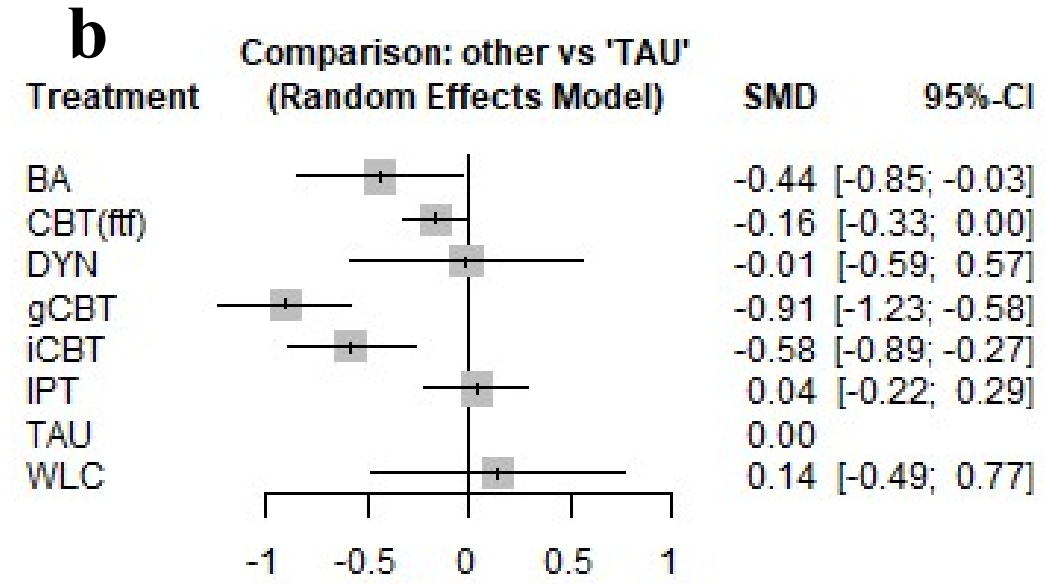
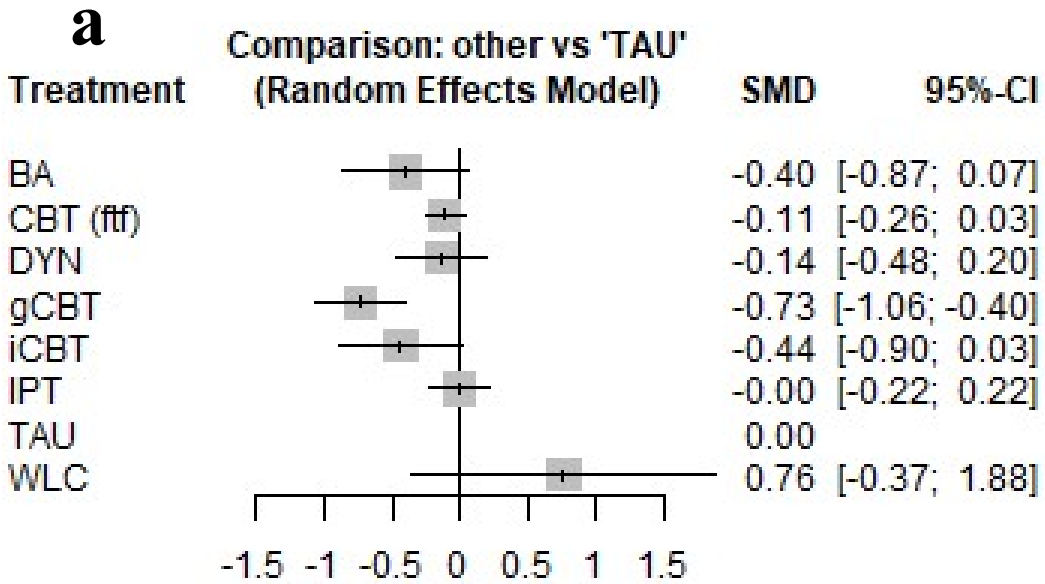


Figure S9: Forest plot of comparisons against TAU in Grp1

Comparisons within the subgroup using HRSD are presented in (a), those within the subgroup using BDI are shown in (b), and those within the trials with low ROB are shown in (c)

SMD = a standardized mean difference of a pairwise comparison in network-meta-analysis between a treatment and TAU. 95% CI = 95% confidence interval

A horizontal line represents 95 % CI and a point on the line represents SMD. The bottom scale represents SMD. SMD < 0 means that a treatment can be more effective than TAU. If the 95% CI does not cover 0, the estimate is statistically significant.

Grp1: a group 1, in which we did not distinguish between psychotherapy alone and psychotherapy combined with medication.

BA = behavioral activation CBT (ftf) = individual face-to-face cognitive behavioral therapy, DYN = psychoanalytic/psychodynamic psychotherapy, gCBT = group cognitive behavioral therapy, iCBT = computerized- or internet cognitive behavioral therapy, IPT = interpersonal psychotherapy, TAU = treatment-as-usual, WLC = wait list control

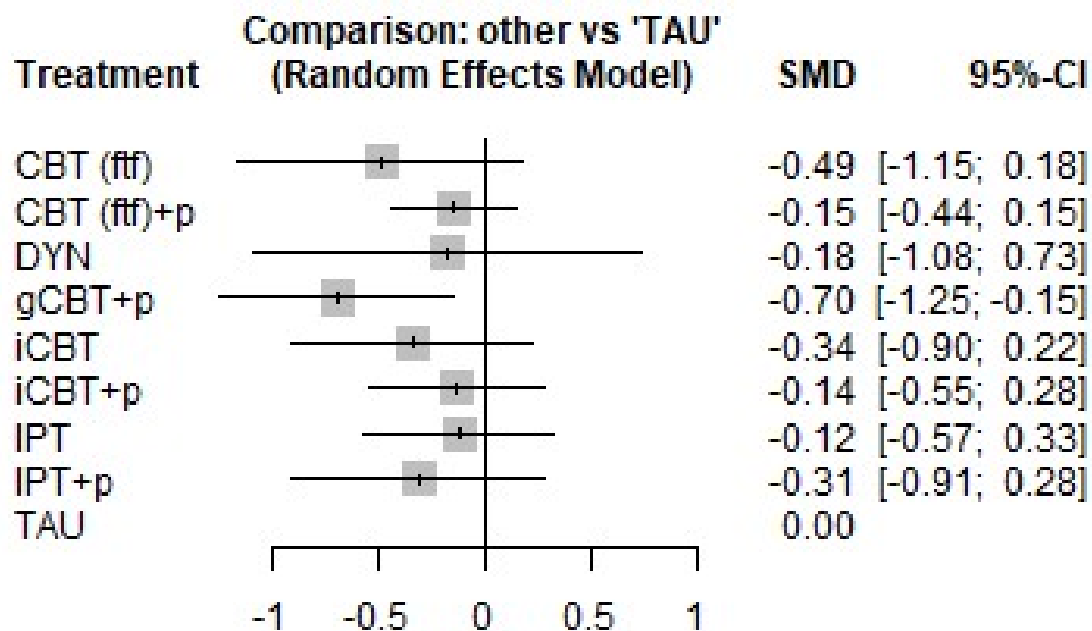
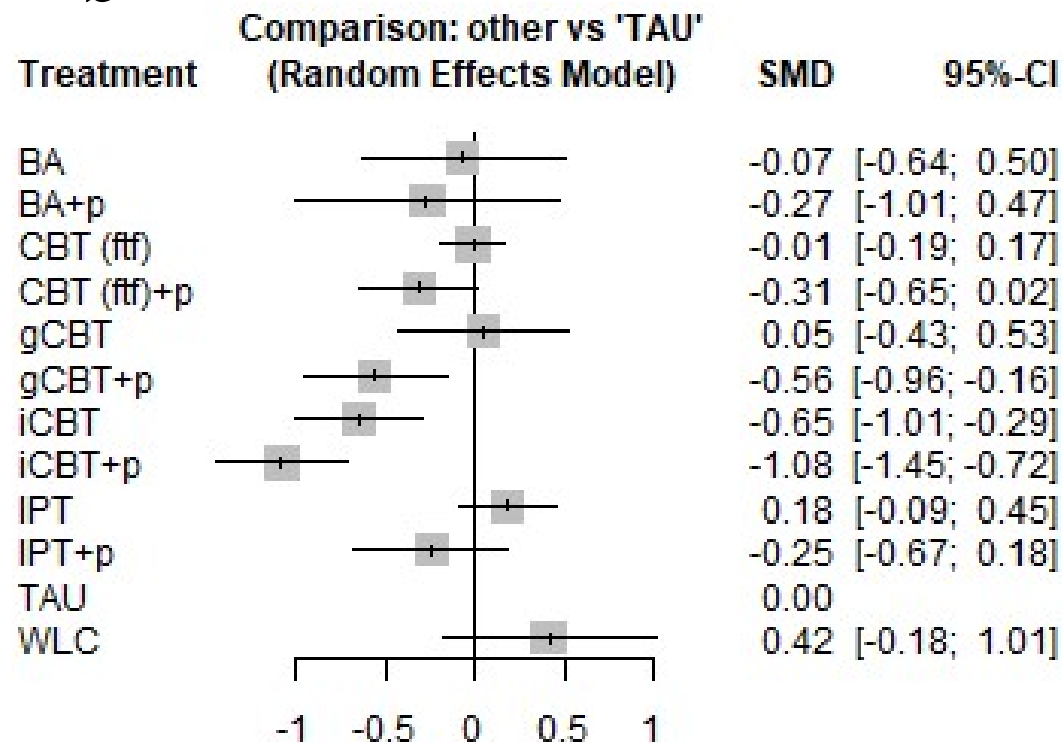
a**b**

Figure S10: Forest plot of comparisons against TAU in Grp2

Figure and legend are continued on the next page.

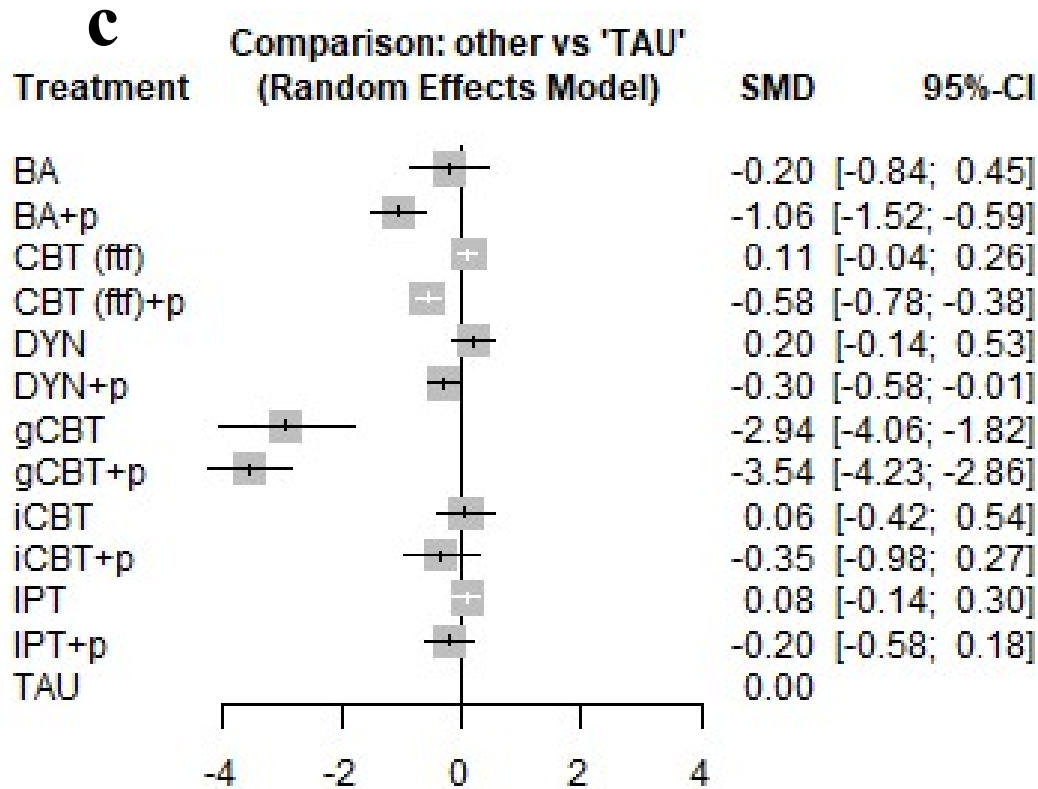


Figure S10: Forest plot of comparisons against TAU in Grp2

The comparisons within the mild depression subgroup are shown in (a), within the moderate depression subgroup are shown in (b), and within the severe depression subgroup are shown in (c).

SMD = a standardized mean difference of a pairwise comparison in network-meta-analysis between a treatment and TAU. 95% CI = 95% confidence interval
A horizontal line represents 95 % CI and a point on the line represents SMD. The bottom scale represents SMD. SMD < 0 means that a treatment can be more effective than TAU. If the 95% CI does not cover 0, the estimate is statistically significant.

Group 2(Grp2): psychotherapy arms were sorted into psychotherapy alone and psychotherapy combined with medication.

BA = behavioral activation, CBT (ftf) = individual face-to-face cognitive behavioral therapy, DYN = psychoanalytic/psychodynamic psychotherapy, gCBT = group cognitive behavioral therapy, iCBT = computerized- or internet cognitive behavioral therapy, IPT = interpersonal psychotherapy, TAU = treatment-as-usual, WLC = wait list control, +p = + pharmacotherapy

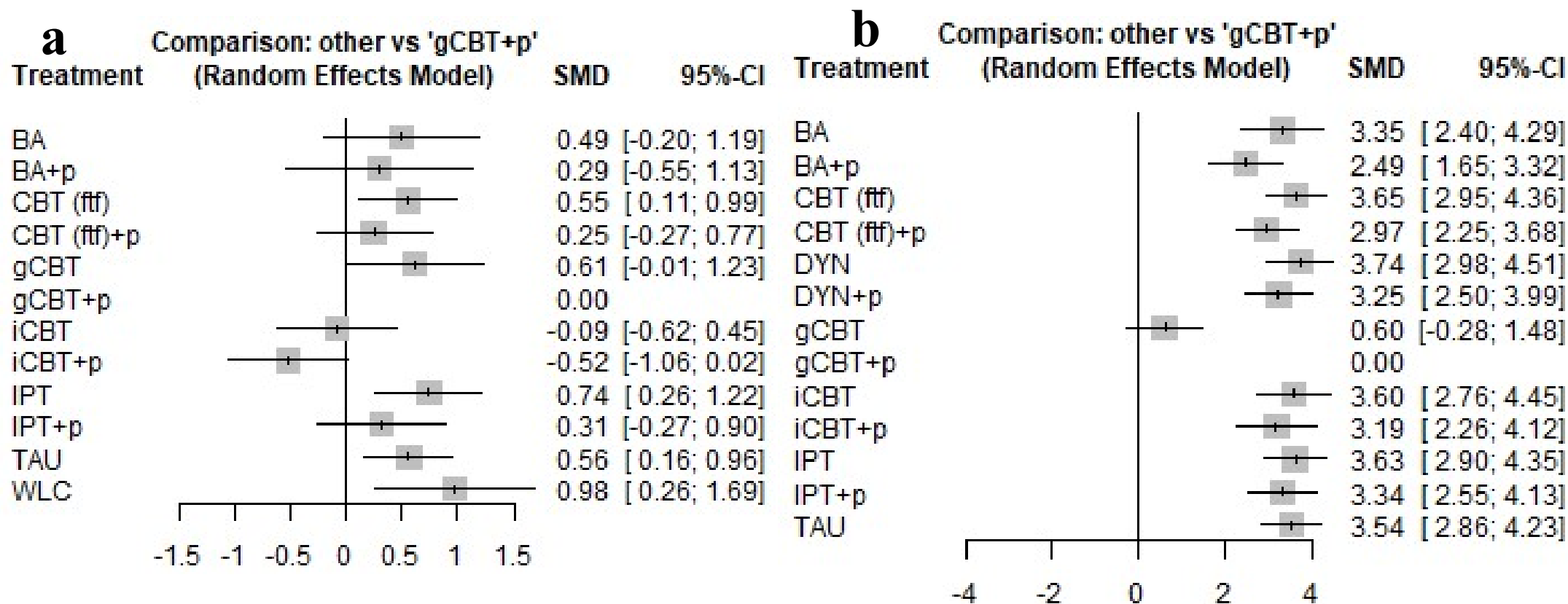


Figure S11: Forest plot of comparisons against gCBT + p in Grp2

The comparisons within the moderate depression subgroup are shown in (a), and within the severe depression subgroup are shown in (b)

SMD = a standardized mean difference of a pairwise comparison in network-meta-analysis between a treatment and gCBT + p. 95% CI = 95% confidence interval

A horizontal line represents 95 % CI and a point on the line represents SMD. The bottom scale represents SMD.

SMD > 0 indicates that the treatment can be less effective than gCBT + p. If the 95% CI does not cover 0, the estimate is statistically significant.

Grp2: a group 2, in which psychotherapy arms were sorted into psychotherapy alone and psychotherapy combined with medication separately.

BA = behavioral activation, CBT (fft) = individual face-to-face cognitive behavioral therapy, DYN = psychoanalytic/psychodynamic psychotherapy, gCBT = group cognitive behavioral therapy, iCBT = computerized- or internet cognitive behavioral therapy, IPT = interpersonal psychotherapy, TAU = treatment-as-usual, WLC = wait list control + p = + pharmacotherapy

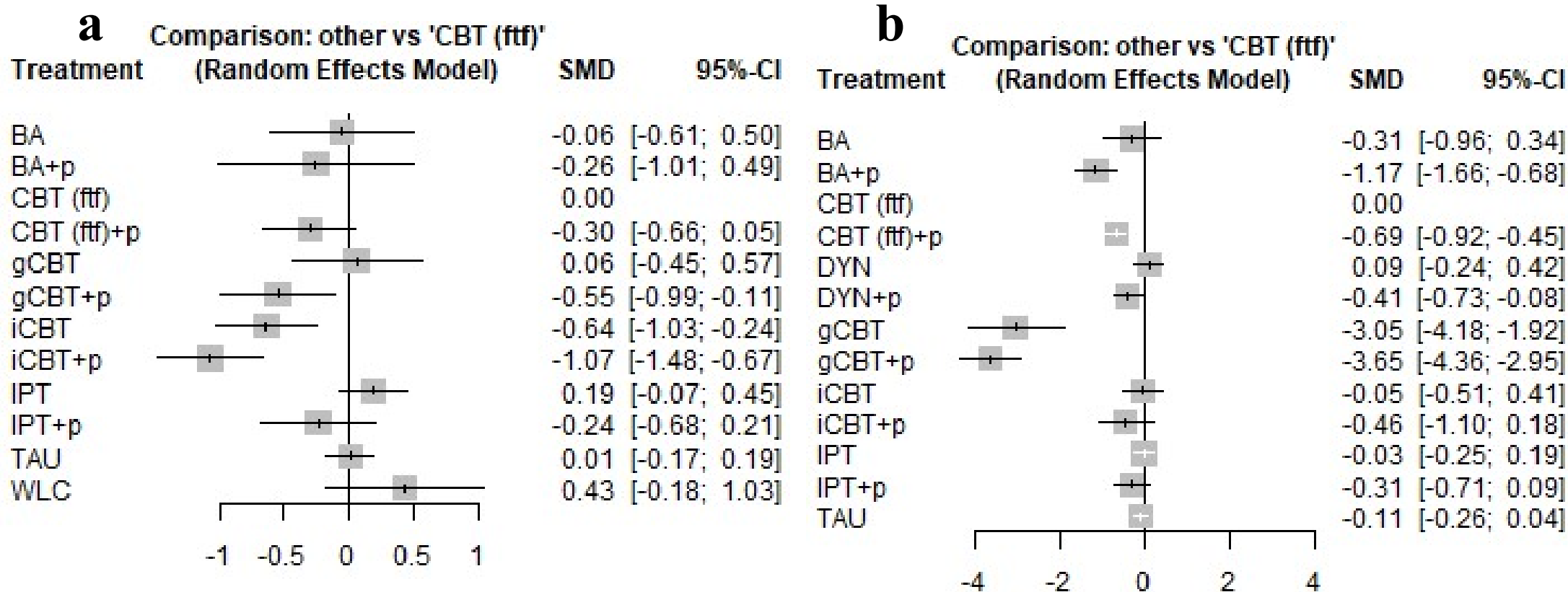


Figure S12: Forest plot of comparisons against CBT (ftf) in Grp2

The comparisons within the moderated depression subgroup are shown in (a), and within the severe depression subgroup are shown in (b).

SMD = a standardized mean difference of a pairwise comparison in network-meta-analysis between a treatment and CBT. 95% CI = 95% confidence interval

A horizontal line represents 95 % CI and a point on the line represents SMD. The bottom scale represents SMD.

SMD < 0 indicates that the treatment can be more effective than CBT(ftf). If the 95% CI does not cover 0, the estimate is statistically significant.

Grp2: a group 2, in which psychotherapy arms were sorted into psychotherapy alone and psychotherapy combined with medication.

BA = behavioral activation, CBT (ftf)= individual face-to-face cognitive behavioral therapy, DYN = psychoanalytic/psychodynamic psychotherapy, gCBT = group cognitive behavioral therapy, iCBT = computerized- or internet cognitive behavioral therapy, IPT = interpersonal psychotherapy, TAU = treatment-as-usual, WLC = wait list control + p = + pharmacotherapy

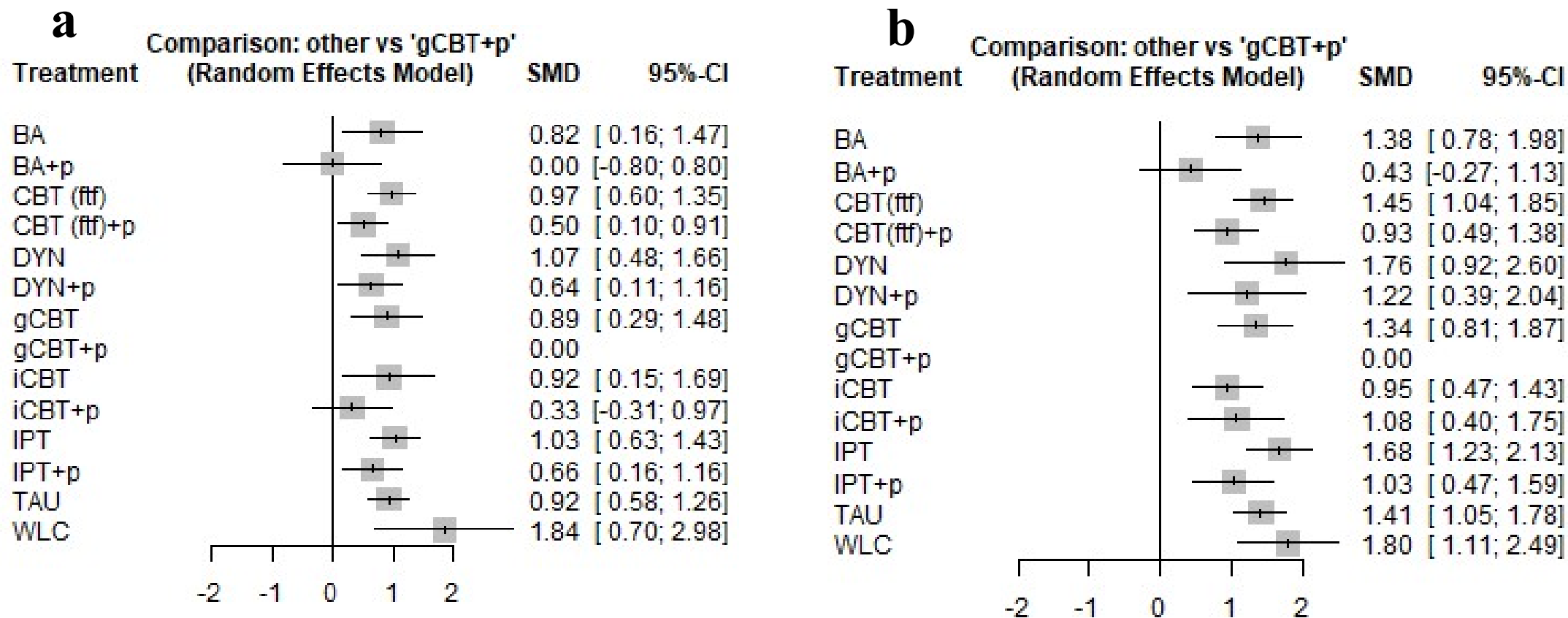


Figure S13: Forest plot of comparisons against gCBT + p in Grp2

Comparisons within the subgroup using HRSD are presented in (a), while those within the subgroup using BDI are shown in (b)

SMD = a standardized mean difference of a pairwise comparison in network-meta-analysis between a treatment and gCBT + p. 95% CI = 95% confidence interval

A horizontal line represents 95 % CI and a point on the line represents SMD. The bottom scale represents SMD.

SMD > 0 indicates that the treatment can be less effective than gCBT + p. If the 95% CI does not cover 0, the estimate is statistically significant.

Grp2: a group 2, in which psychotherapy arms were sorted into psychotherapy alone and psychotherapy combined with medication.

BA = behavioral activation, CBT (ftf) = individual face-to-face cognitive behavioral therapy, DYN = psychoanalytic/psychodynamic psychotherapy, gCBT = group cognitive behavioral therapy, iCBT = computerized- or internet cognitive behavioral therapy, IPT = interpersonal psychotherapy, TAU = treatment-as-usual, WLC = wait list control + p = + pharmacotherapy

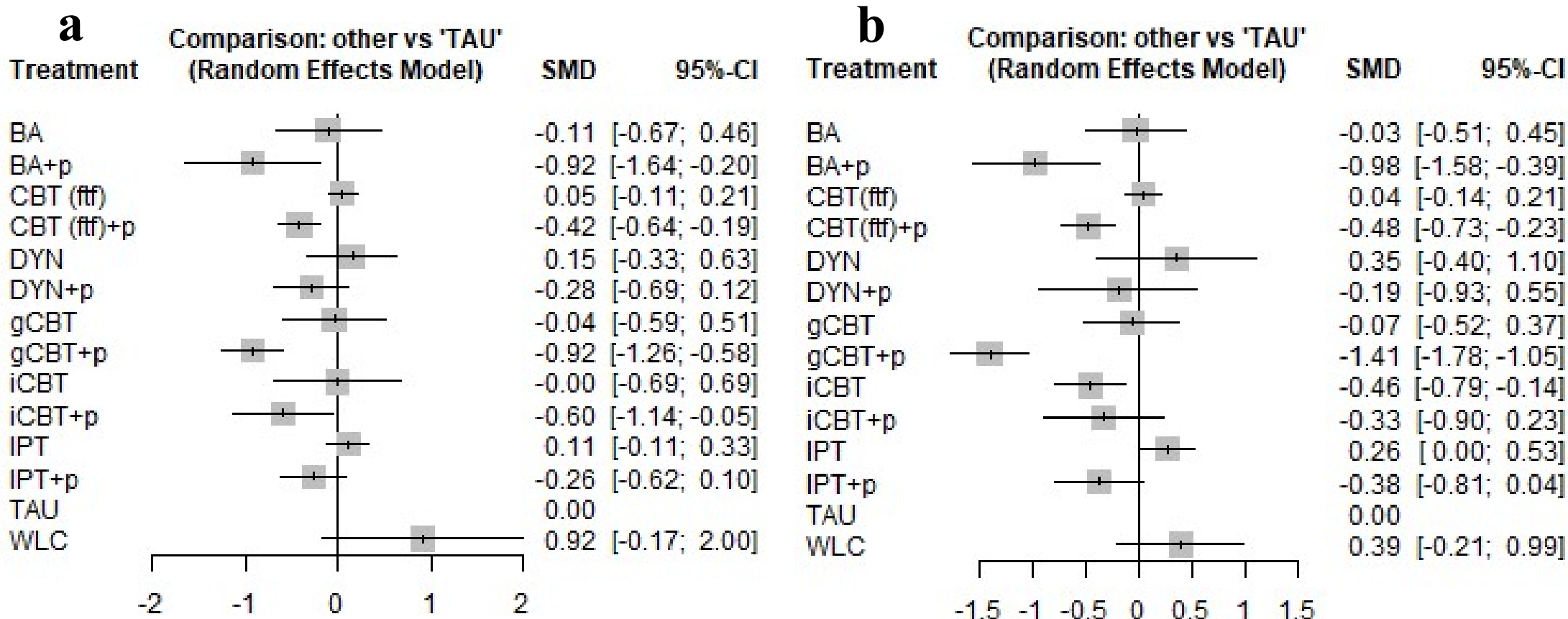


Figure S14: Forest plot of comparisons against TAU in Grp2

Comparisons within the subgroup using HRSD are presented in (a), while those within the subgroup using BDI are shown in (b)

SMD = a standardized mean difference of a pairwise comparison in network-meta-analysis between a treatment and TAU. 95% CI = 95% confidence interval

A horizontal line represents 95 % CI and a point on the line represents SMD. The bottom scale represents SMD.

SMD < 0 means that a treatment can be more effective than TAU. If the 95% CI does not cover 0, the estimate is statistically significant.

Group 2(Grp2): psychotherapy arms were sorted into a psychotherapy alone and a psychotherapy combined with medication.

BA = behavioral activation, CBT (ftf) = individual face-to-face cognitive behavioral therapy, DYN = psychoanalytic/psychodynamic psychotherapy, gCBT = group cognitive behavioral therapy, iCBT = computerized- or internet cognitive behavioral therapy, IPT = interpersonal psychotherapy, TAU = treatment-as-usual, WLC = wait list control + p = + pharmacotherapy

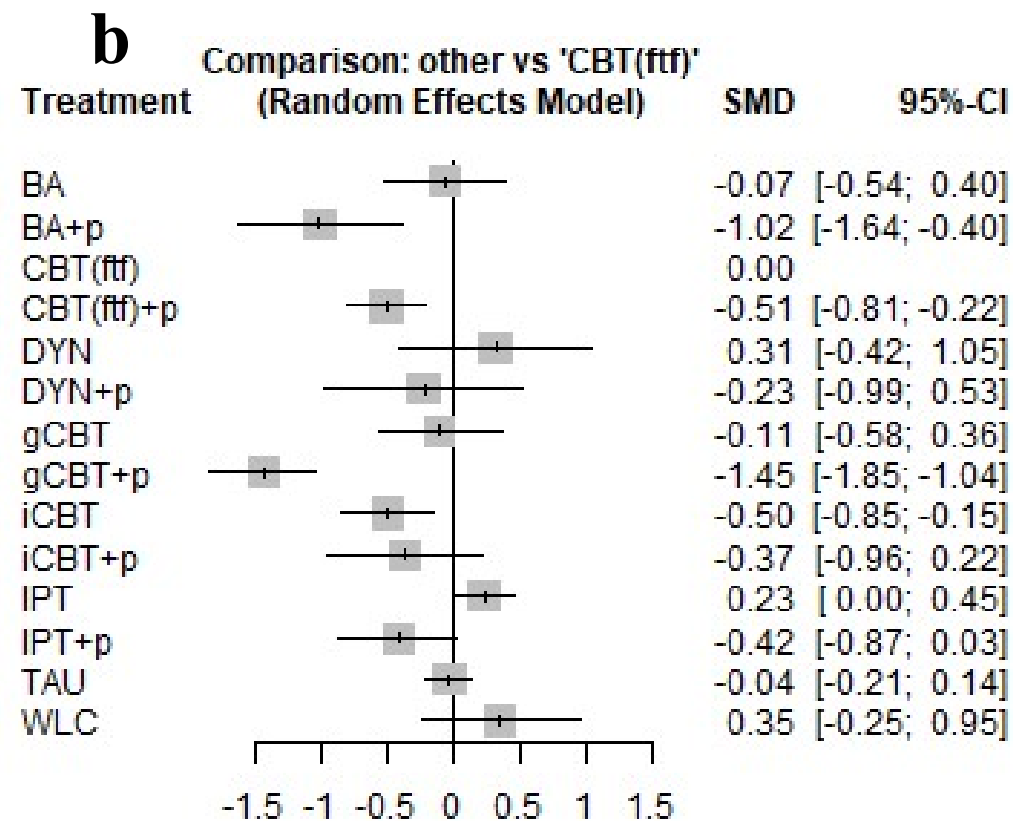
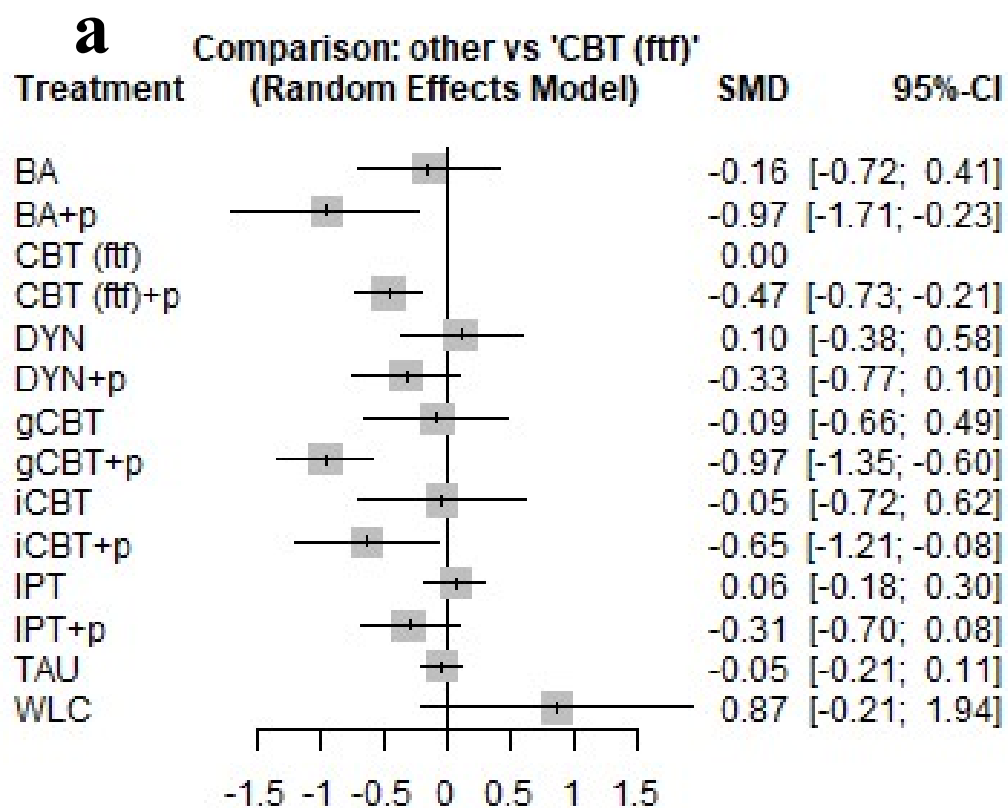


Figure S15: Forest plot of comparisons against CBT(ftf) in Grp2

Comparisons within the subgroup using HRSD are presented in (a), while those within the subgroup using BDI are shown in (b)

SMD = a standardized mean difference of a pairwise comparison in network-meta-analysis between a treatment and CBT. 95% CI = 95% confidence interval

A horizontal line represents 95 % CI and a point on the line represents SMD. The bottom scale represents SMD.

SMD < 0 indicates that the treatment can be more effective than CBT (ftf). If the 95% CI does not cover 0, the estimate is statistically significant.

Grp2: a group 2, in which psychotherapy arms were sorted into psychotherapy alone and psychotherapy combined with medication.

BA = behavioral activation, CBT (ftf) = individual face-to-face cognitive behavioral therapy, DYN = psychoanalytic/psychodynamic psychotherapy, gCBT = group cognitive behavioral therapy, iCBT = computerized- or internet cognitive behavioral therapy, IPT = interpersonal psychotherapy, TAU = treatment-as-usual, WLC = wait list control + p = + pharmacotherapy

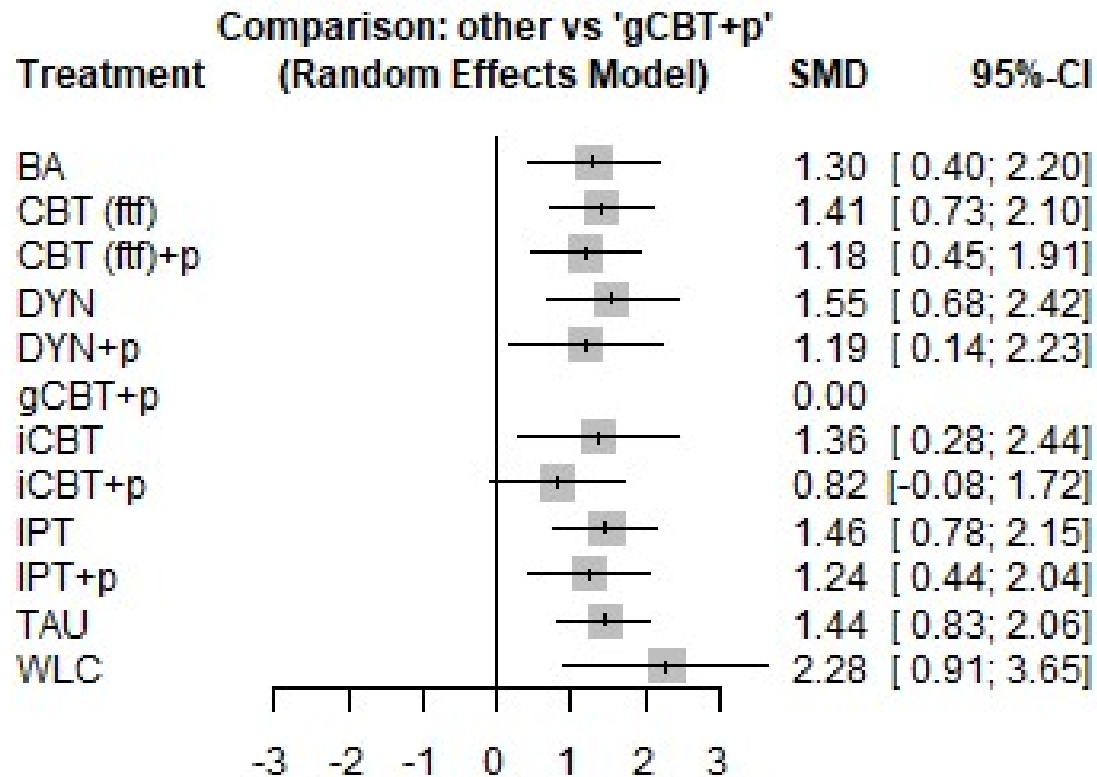


Figure S16: Forest plot of comparisons against gCBT + p within the trials with low ROB in Grp2

SMD = a standardized mean difference of a pairwise comparison in network-meta-analysis between a treatment and gCBT + p. 95% CI = 95% confidence interval
A horizontal line represents 95 % CI and a point on the line represents SMD. The bottom scale represents SMD.

SMD > 0 indicates that the treatment can be less effective than gCBT + p. If the 95% CI does not cover 0, the estimate is statistically significant.

Grp2: a group 2, in which psychotherapy arms were sorted into psychotherapy alone and psychotherapy combined with medication.

BA = behavioral activation, CBT (ftf) = individual face-to-face cognitive behavioral therapy, DYN = psychoanalytic/psychodynamic psychotherapy, gCBT = group cognitive behavioral therapy, iCBT = computerized- or internet cognitive behavioral therapy, IPT = interpersonal psychotherapy, TAU = treatment-as-usual, WLC = wait list control + p = + pharmacotherapy

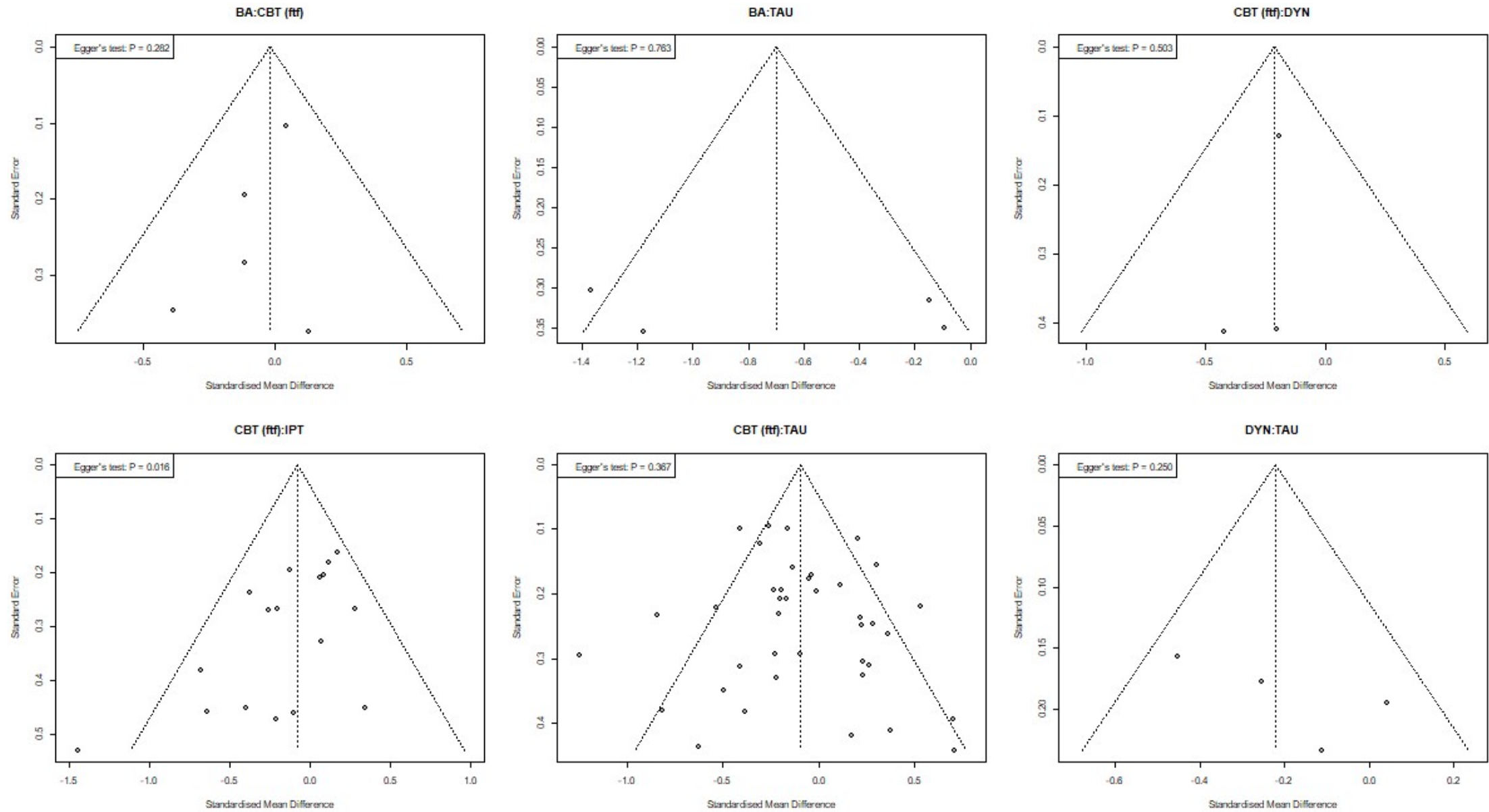


Figure S17: Funnel plot with Egger's test in Grp1 (Figure and legend are continued on the next page.)

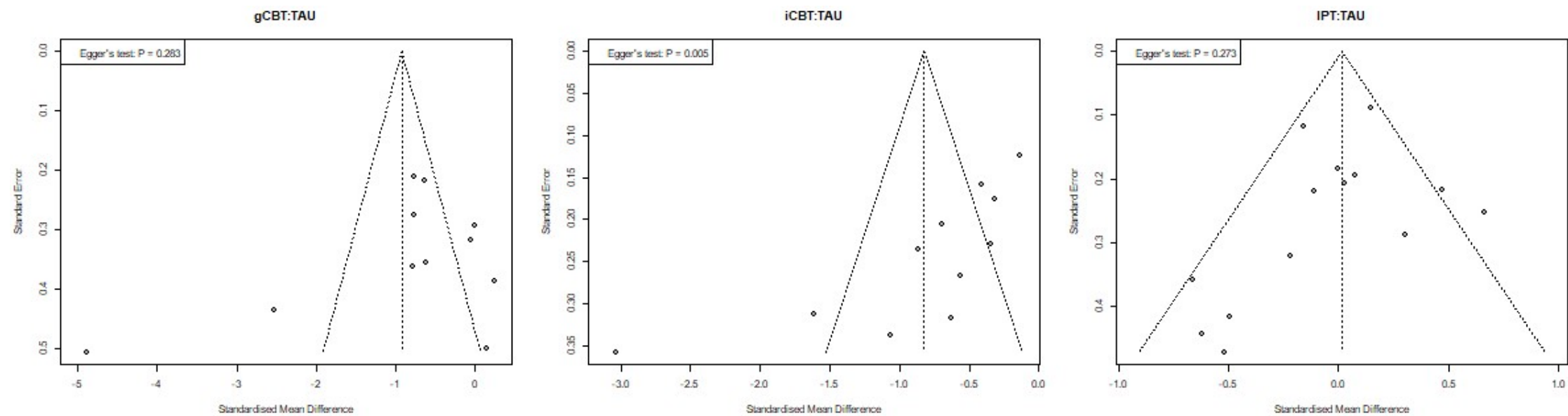


Figure S17: Funnel plot with Egger's test in Grp1

Each direct comparison is represented as a dot. The X axis represents standard mean difference of a direct pairwise comparison. The Y-axis represents standard error. The diagonal dotted lines represent 95 % confidence interval. An asymmetrical funnel could be caused by publication bias. Egger's test: p-value < 0.05 means the existence of publication bias.

Group 1(Grp1): Psychotherapy arms were not distinguished between psychotherapy alone and psychotherapy combined with medication.

BA = behavioral activation, CBT (ftf) = individual face-to-face cognitive behavioral therapy, DYN = psychoanalytic/psychodynamic psychotherapy, gCBT = group cognitive behavioral therapy, iCBT = computerized- or internet cognitive behavioral therapy, IPT = interpersonal psychotherapy, TAU = treatment-as-usual, WLC = wait list control

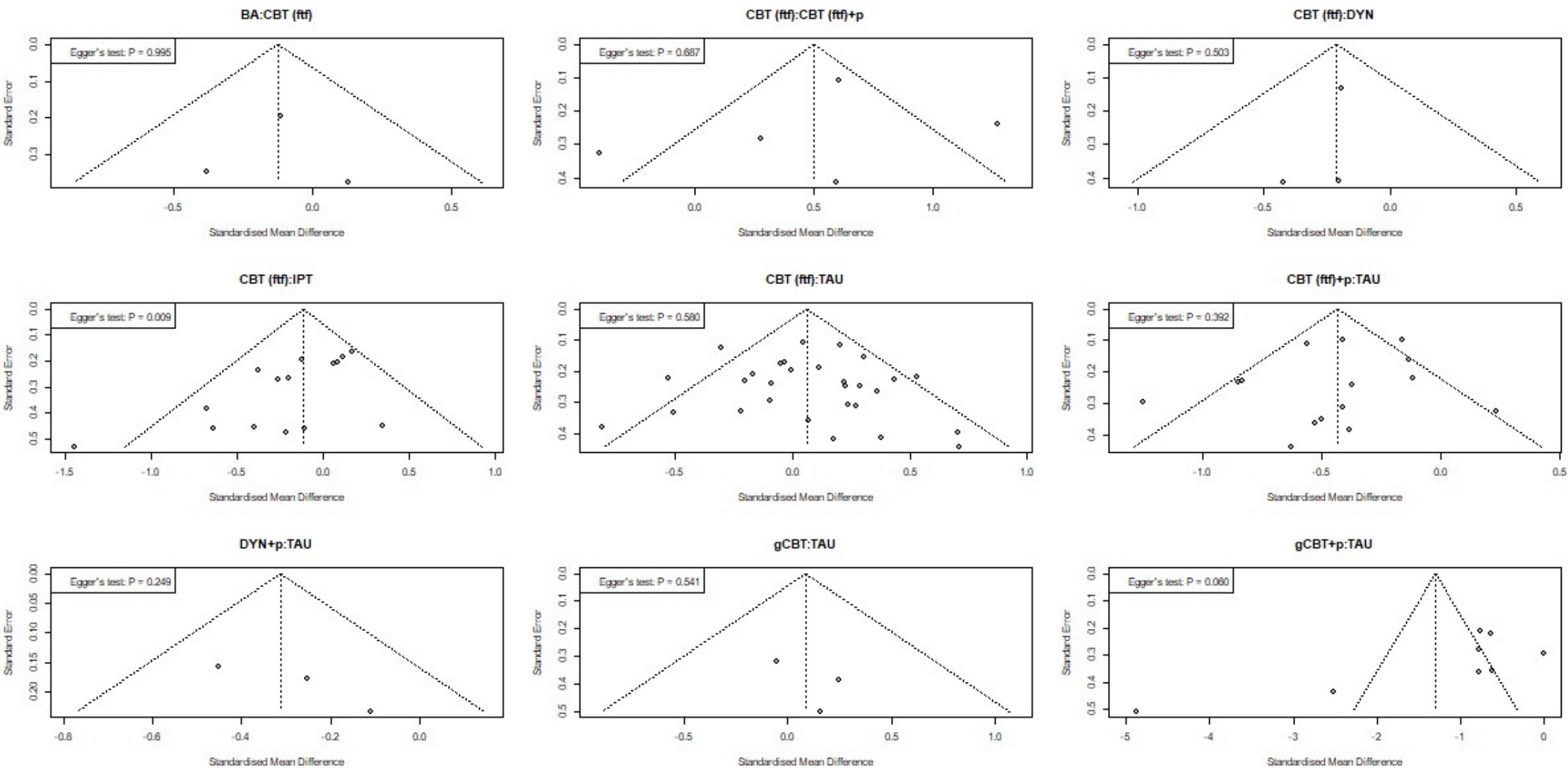


Figure S18: Funnel plot with Egger's test in Grp2 (Figure and legend are continued on the next page.)

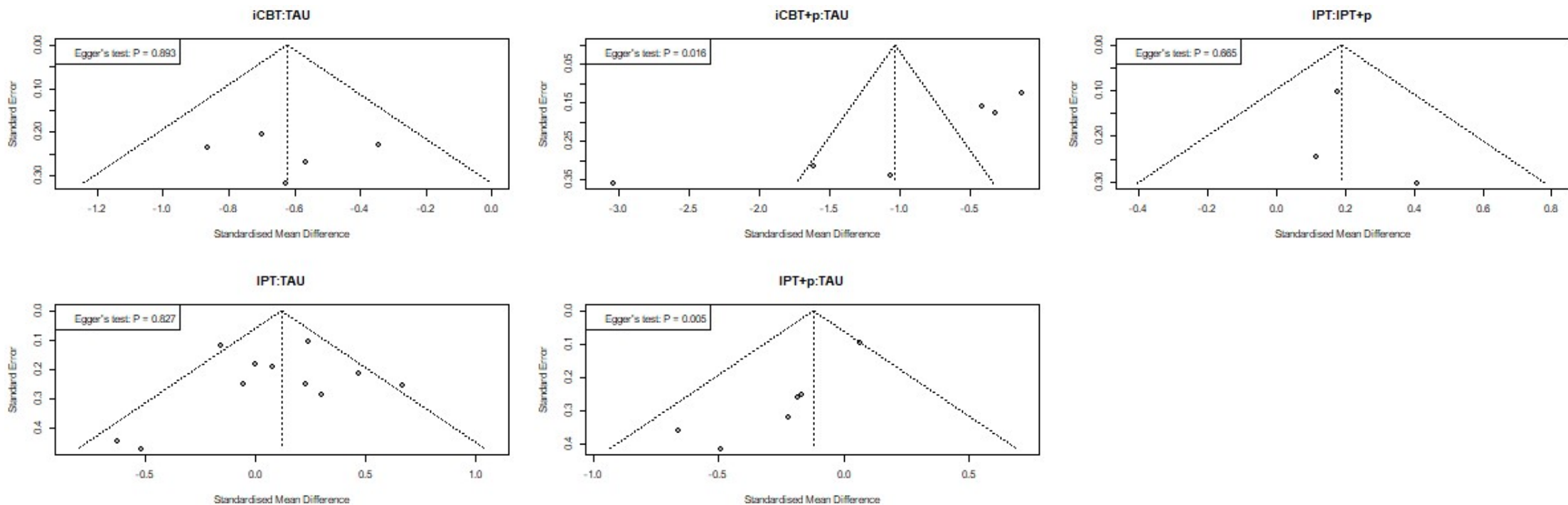


Figure S18: Funnel plot with Egger's test in Grp2

Each direct comparison is represented as a dot. The X axis represents standard mean difference of a direct pairwise comparison. The Y-axis represents standard error. The diagonal dotted lines represent 95 % confidence interval. An asymmetrical funnel could be caused by publication bias. Egger's test: p-value < 0.05 means the existence of publication bias.

Group 2(Grp2): psychotherapy arms were sorted into psychotherapy alone and psychotherapy combined with medication.

BA = behavioral activation, CBT (ftf) = individual face-to-face cognitive behavioral therapy, DYN = DYN = psychoanalytic/psychodynamic psychotherapy, gCBT = group cognitive behavioral therapy, iCBT = computerized- or internet cognitive behavioral therapy, IPT = interpersonal psychotherapy, TAU = treatment-as-usual, WLC = wait list control, +p = + pharmacotherapy