

Was global deforestation under lockdown?

Santiago Saavedra^{1*}

¹Universidad del Rosario, Department of Economics, Bogota, Colombia

*Corresponding author: santiago.saavedrap@urosario.edu.co.

Online Appendix B

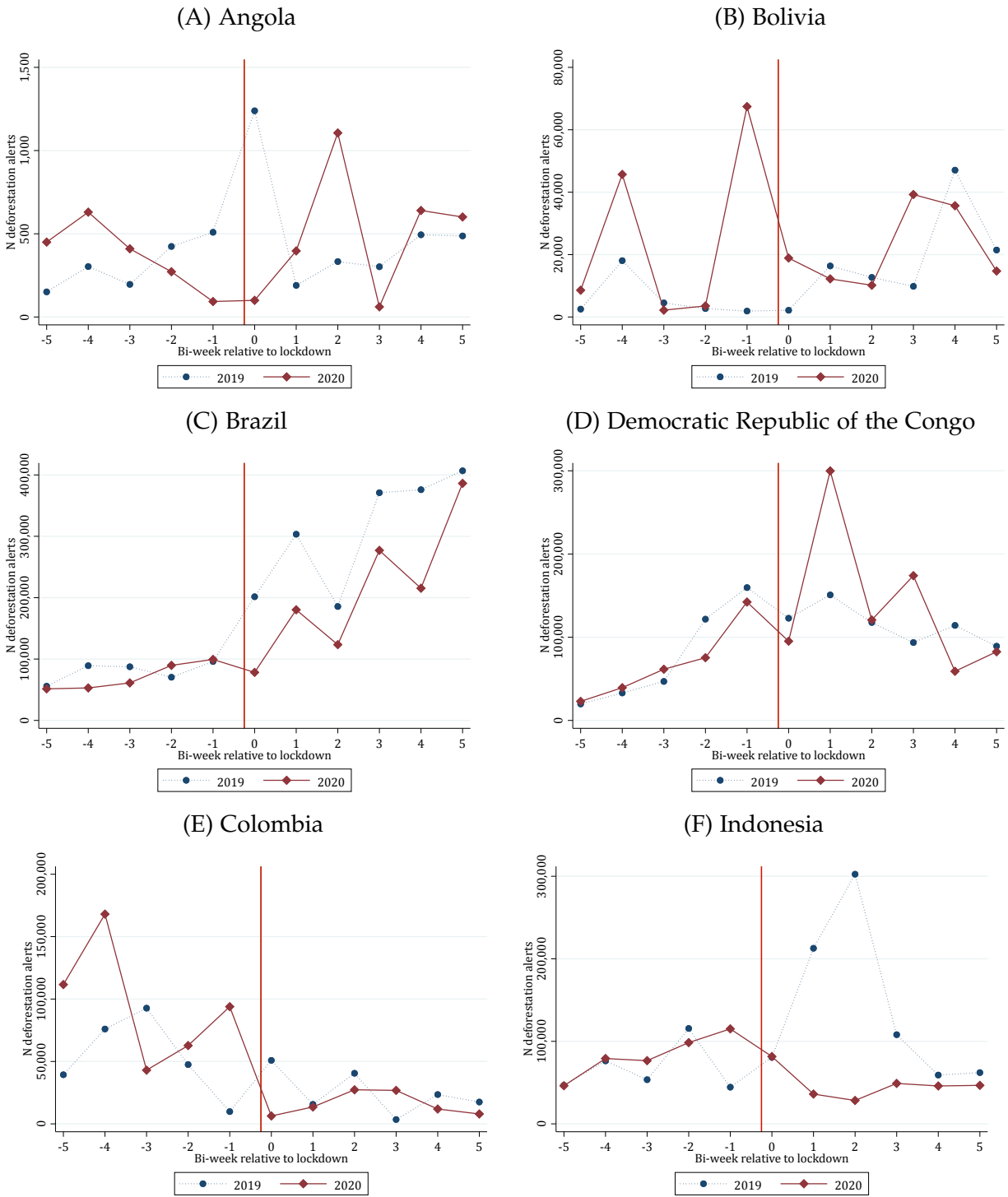


Figure B.3. Deforestation alerts by country.

Notes: This figure shows deforestation alerts for 2019 and 2020, by key country. The sample covers the window 5 bi-weeks before and 5 bi-weeks after the lockdown restriction. Red line represents the beginning of lockdown and green line represents the end of the lockdown

Table B.1. Country details

Country Name	Forest (Mkm2)	Admin Level	N unit	Start Lockdown	End Lockdown
Brazil	519.19	2	1,613	6	-
Democratic Republic of Congo	199.22	2	36	6	-
Indonesia	160.98	2	240	8	-
Colombia	81.78	2	653	7	-
Peru	78.07	2	122	6	-
Bolivia	64.52	2	56	6	-
Venezuela	56.53	2	272	6	-
Angola	55.32	2	80	7	-
Mexico	53.18	2	712	7	-
Central African Republic	47.07	2	41	7	12
Papua New Guinea	42.94	2	83	6	13
Myanmar	42.86	2	50	7	-
India	38.81	2	224	6	13
Cameroon	31.47	2	46	6	9
Malaysia	29.42	2	143	6	-
Mozambique	28.91	2	49	13	-
Tanzania	26.42	2	86	-	-
Congo	26.39	2	46	7	-
Gabon	24.70	2	37	6	-
Paraguay	24.30	2	113	6	-
Zambia	24.09	2	12	9	-
Thailand	19.96	2	443	6	12
Laos	19.12	2	135	7	11
Ecuador	19.06	2	57	6	-
Guyana	19.00	2	86	7	-
Philippines	18.60	2	847	6	-
Madagascar	17.14	2	9	6	-
Vietnam	16.58	2	370	7	-
Cote d'Ivoire	14.87	2	16	6	-
Suriname	13.95	2	49	12	-
Ethiopia	12.04	2	26	7	-
Nigeria	10.03	2	175	7	-
Liberia	9.38	2	63	6	-
Cambodia	8.81	2	102	6	13
Guinea	8.16	2	12	7	12
Nicaragua	7.78	2	70	-	-
Uganda	7.77	2	67	7	-
Honduras	7.74	2	160	6	-
Guatemala	7.69	2	160	6	-
Ghana	6.96	2	49	7	8
Panama	5.70	2	71	6	-

Table B.1. – continued from previous page

Country Name	Forest (Mkm ²)	Admin Level	N unit	Start Lockdown	End Lockdown
Sierra Leone	5.62	2	13	7	9
Nepal	5.16	2	14	6	-
Cuba	4.01	2	88	8	-
Sri Lanka	3.94	2	180	6	10
Costa Rica	3.91	2	68	5	-
Kenya	3.32	2	134	6	-
Salomon Islands	2.74	2	147	7	-
Dominican Republic	2.58	2	70	6	-
Bhutan	2.58	2	204	7	-
Bangladesh	1.96	2	21	6	11
Belize	1.75	1	6	7	-
Fiji	1.58	2	12	6	-
Malawi	1.52	2	14	-	-
Zimbabwe	1.41	2	6	7	12
Vanuatu	1.18	2	49	7	-
El Salvador	0.99	2	58	6	-
Haiti	0.86	2	18	6	11
Jamaica	0.77	1	13	7	11
Togo	0.56	2	3	6	-
Burundi	0.54	2	11	-	-
Brunei	0.53	2	32	-	-
Puerto Rico	0.52	1	49	6	11
Rwanda	0.50	2	10	6	11
Trinidad and Tobago	0.39	1	15	6	-
Benin	0.17	2	10	7	11
Dominica	0.07	1	10	7	11
Senegal	0.04	2	5	-	-
Singapore	0.02	1	4	7	13
Gambia	0.00	2	20	7	12

Notes: Details for each country used in the regression analysis

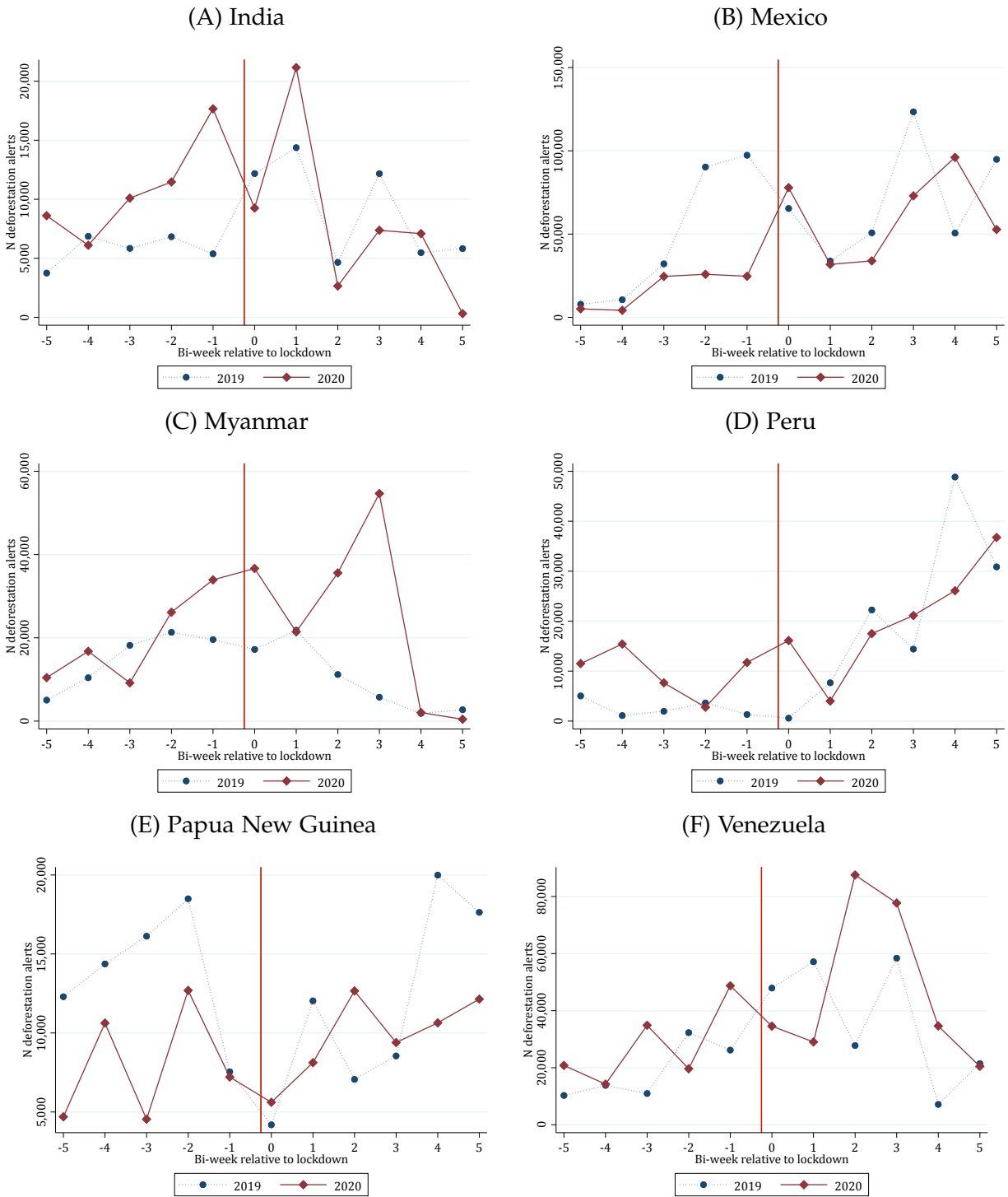


Figure B.4. Deforestation alerts by country.

Notes: This figure shows deforestation alerts for 2019 and 2020, for the countries with the largest forest area. The sample covers the window 5 bi-weeks before and 5 bi-weeks after the lockdown restrictions. The red line represents the beginning of lockdown and green line represents the end of the lockdown