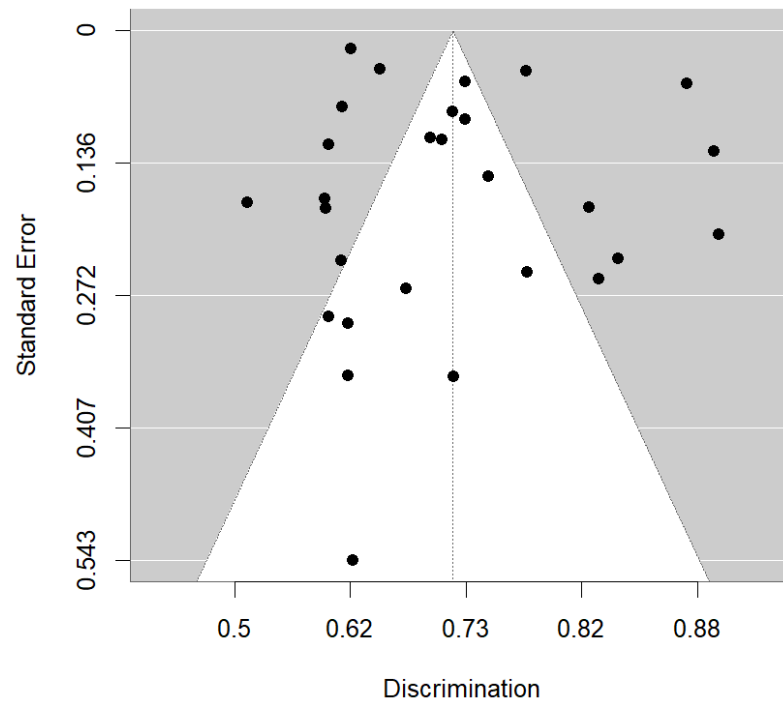


Supplement 5 – Publication bias

Title: Funnel plot of included studies in systematic review



Caption: the dot close to the x-axis represents one study (42) with a large standard deviation suggesting that there is one lower-powered study included in the meta-analysis. Despite the symmetrical concentration of dots at the top, the funnel plot indicates substantial variance in discrimination performance among high-powered studies.