

[Supplementary Material]

Revisiting lead isotope data in Shang and Western Zhou bronzes

Zhengyao Jin<sup>1</sup>, Ruiliang Liu<sup>2,\*</sup>, Jessica Rawson<sup>2</sup> & A. Mark Pollard<sup>2</sup>

<sup>1</sup> USTC Archaeometry Laboratory, University of Science and Technology of China, 96 Jinzhai Road, Hefei 230026, China

<sup>2</sup> School of Archaeology, University of Oxford, 36 Beaumont Street, Oxford OX1 2PG, UK

\* Author for correspondence (Email: ruiliang.liu@stx.ox.ac.uk)

Received: 11 October 2016; Accepted: 9 January 2017; Revised: 5 February 2017

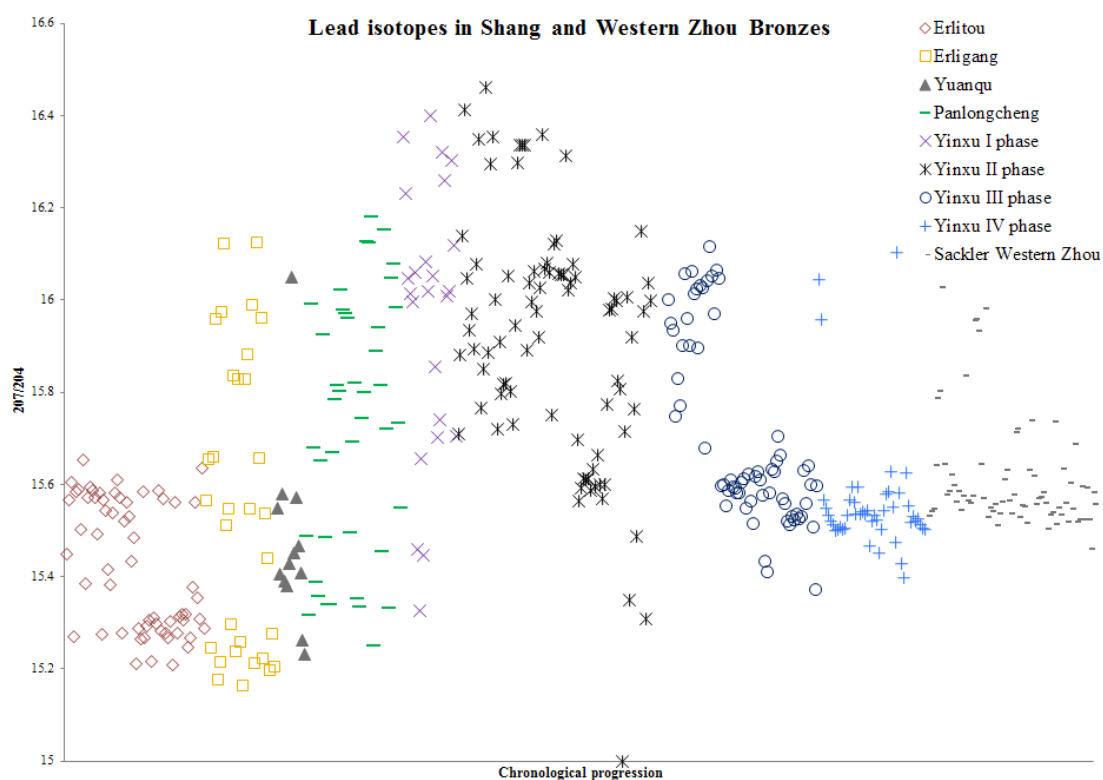


Figure S1.  $^{207}\text{Pb}/^{204}\text{Pb}$  values for vessels from Erlitou, Erligang, Panlongcheng, Yuanqu, Anyang, Western Zhou.

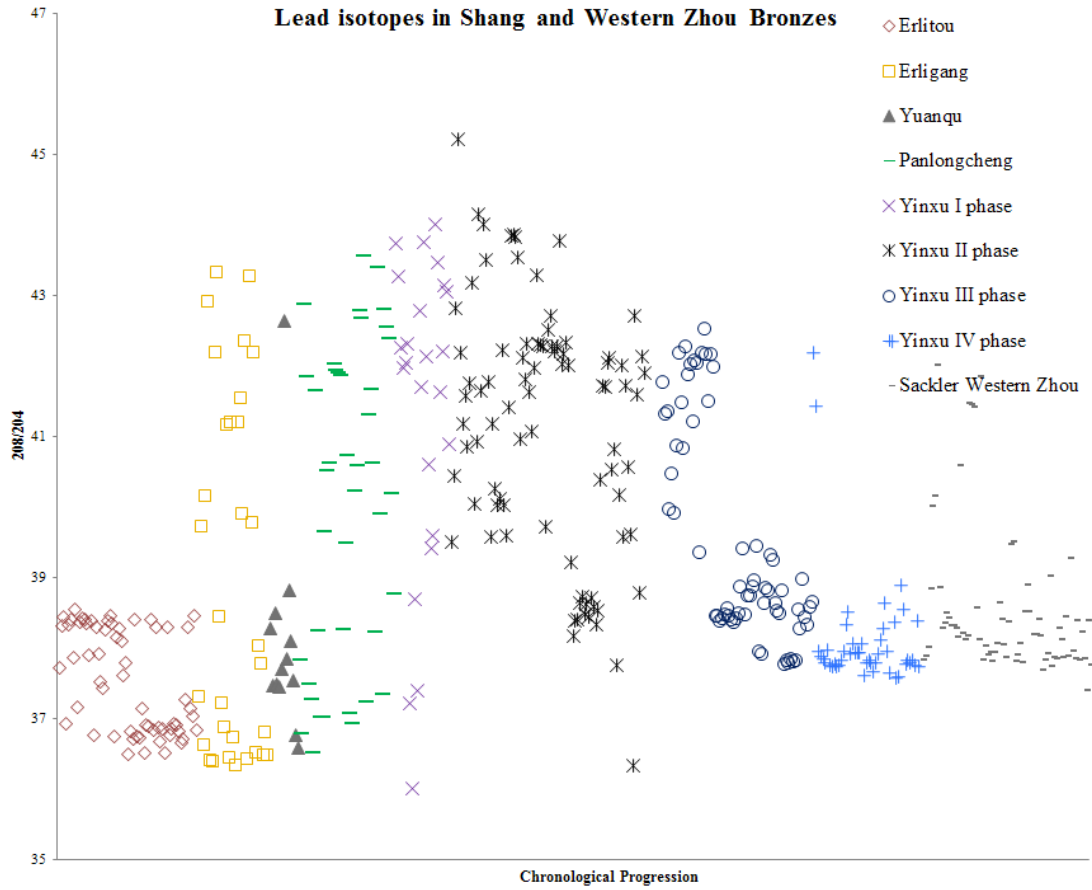


Figure S2.  $^{208}\text{Pb}/^{204}\text{Pb}$  values for vessels from Erlitou, Erligang, Panlongcheng, Yuanqu, Anyang, Western Zhou.

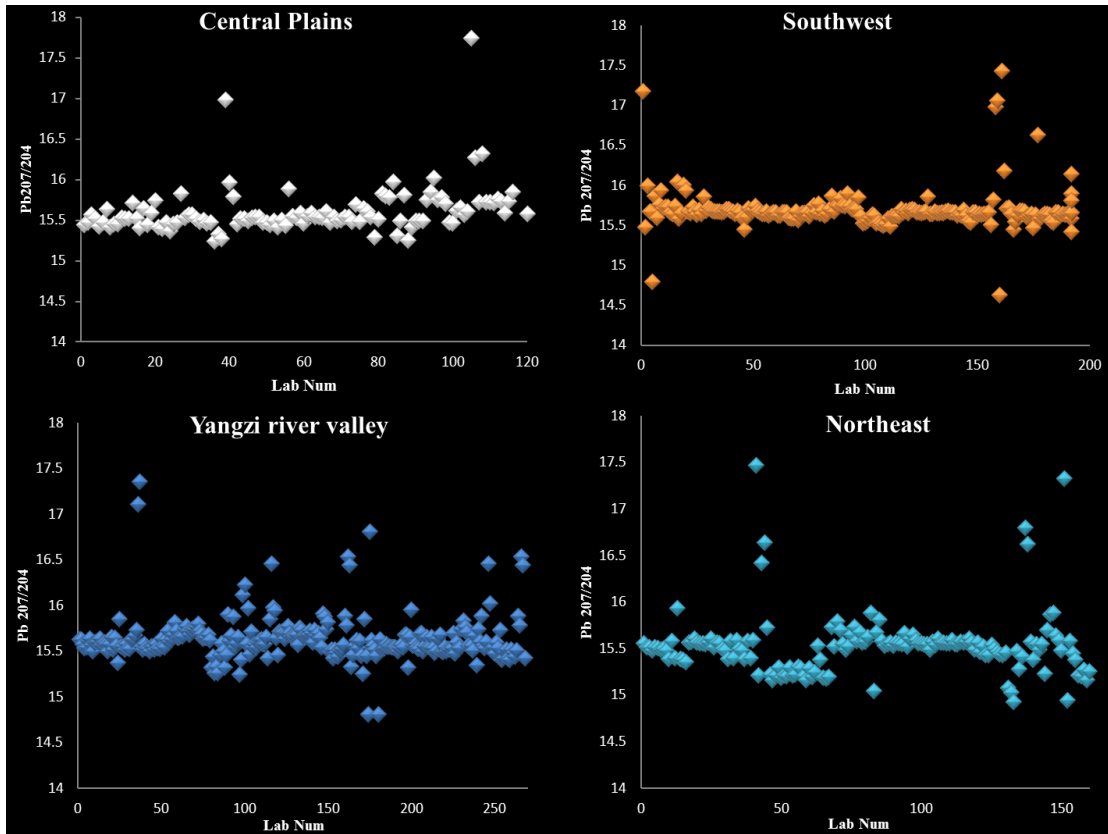
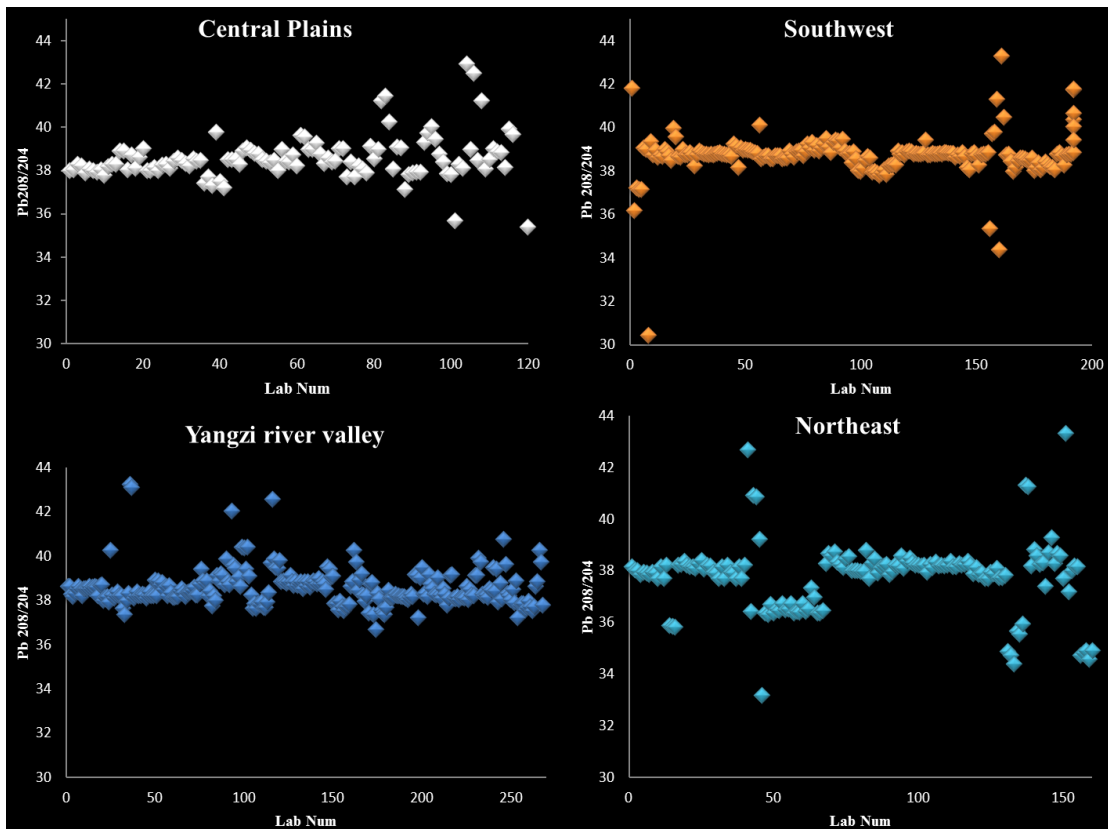


Figure S3. Lead isotope values for modern ore data from various parts of China ( $^{207}\text{Pb}/^{204}\text{Pb}$ ).



*Figure S4. Lead isotope values for modern ore data from various parts of China.*

$(^{208}\text{Pb}/^{204}\text{Pb})$