

[Supplementary material]

Excavating among the megaliths: recent research at the ‘Plain of Jars’ site 1 in Laos

Dougald O’Reilly¹, Louise Shewan^{2,*}, Kate Domett³, Siân E. Halcrow⁴ & Thonglith Luangkhoth⁵

¹ *School of Archaeology and Anthropology, Australian National University, 44 Linneaus Way, Acton ACT 2601, Australia*

² *School of Earth Sciences, University of Melbourne, 253–283 Elgin Street, Victoria, Australia*

³ *College of Medicine and Dentistry, James Cook University, 1 James Cook Drive, Townsville, Queensland, Australia 4811*

⁴ *Department of Anatomy, University of Otago, 270 Great King Street, Dunedin 9016, New Zealand*

⁵ *Department of Heritage, Ministry of Information, Culture and Tourism, P.O. Box 3556, Lane Xang Avenue, Vientiane Capital, Lao PDR*

* *Author for correspondence (Email: louise.shewan@unimelb.edu.au)*

Supplemental images



Figure S1. Partial view of site 1 looking to the north-east showing part of jar group 2; excavation units are visible as is jar group 1 on the hill in the background; a bomb crater can also be seen in the rear right (credit: Plain of Jars Research Project).



Figure S2. Left) spindle whorls discovered in unit 1, site 1, Xieng Khouang Laos (credit: Plain of Jars Research Project); right) spindle whorls site 1 (Ban Ang) by Colani (1935).

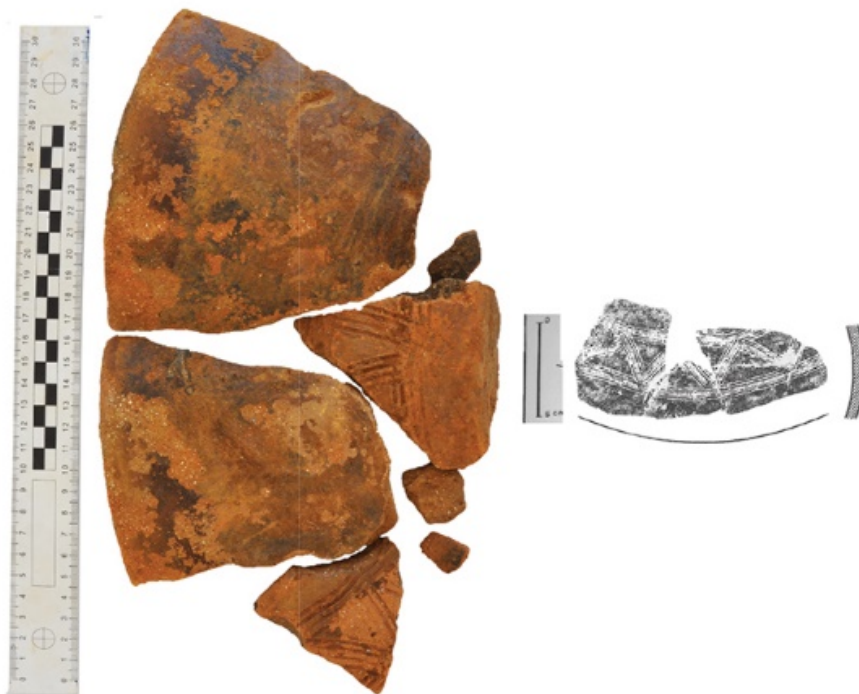


Figure S3. Left) Incised sherds discovered in unit 1, site 1, Xieng Khouang Laos (credit: Plain of Jars Research Project); right) Ceramic sherd discovered at Dong Mut by Colani (1935).



Figure S4. An agate bead excavated from unit 1, site 1, Xieng Khouang Laos (credit: Plain of Jars Research Project).



Figure S5. Left) polished stone pendant discovered by Colani (1935) at Ban Soua; right) polished stone pendant discovered at site 1, unit 1; both were discovered beside megalithic jars (credit: Plain of Jars Research Project).

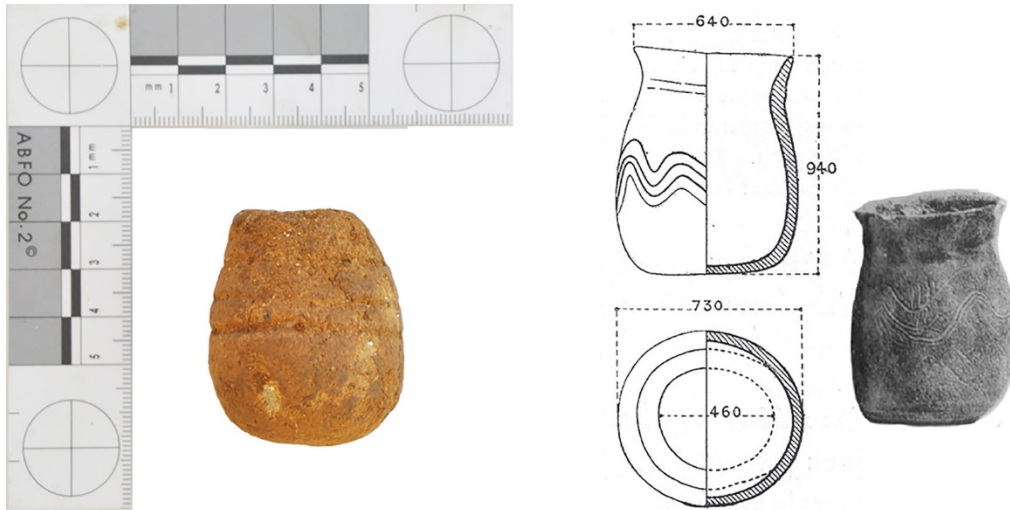


Figure S6. Left) incised small ceramic vessel discovered in unit 1, site 1, Xieng Khouang Laos (credit: Plain of Jars Research Project); right) incised small ceramic vessel Site 1 (Ban Ang) by Colani (1935).



Figure S7. An carnelian bead excavated from unit 1, site 1, Xieng Khouang Laos (credit: Plain of Jars Research Project).

References

COLANI, M. 1935. *Mégalithes du Haut-Laos* (Publications de l'École française d'Extrême-Orient 25 & 26). Paris: Les Éditions d'art et d'histoire