

SUPPLEMENTAL DATA (ON LINE)

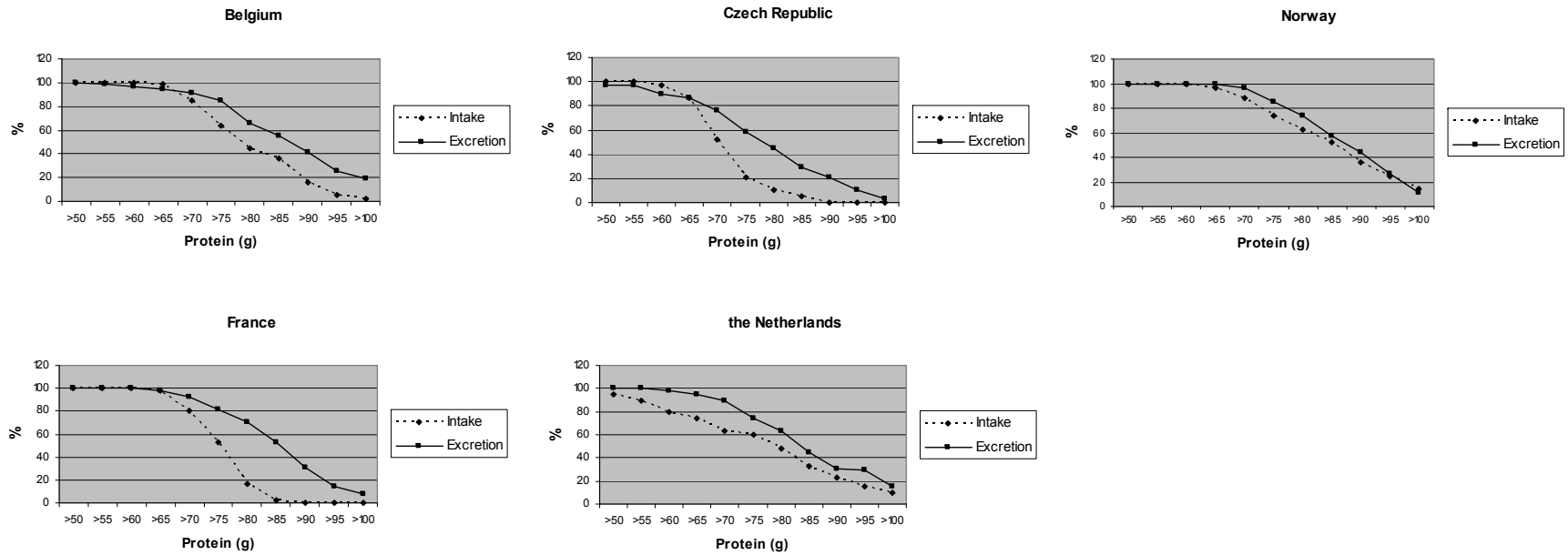


Figure S5– Prevalence of women consuming above specific amounts of protein as estimated by usual distributions* from dietary recalls (intake) and biomarkers (excretion) for five European centers in the EFCOVAL validation study

* Usual intake/excretion distribution estimated by MSM method (see methods section).

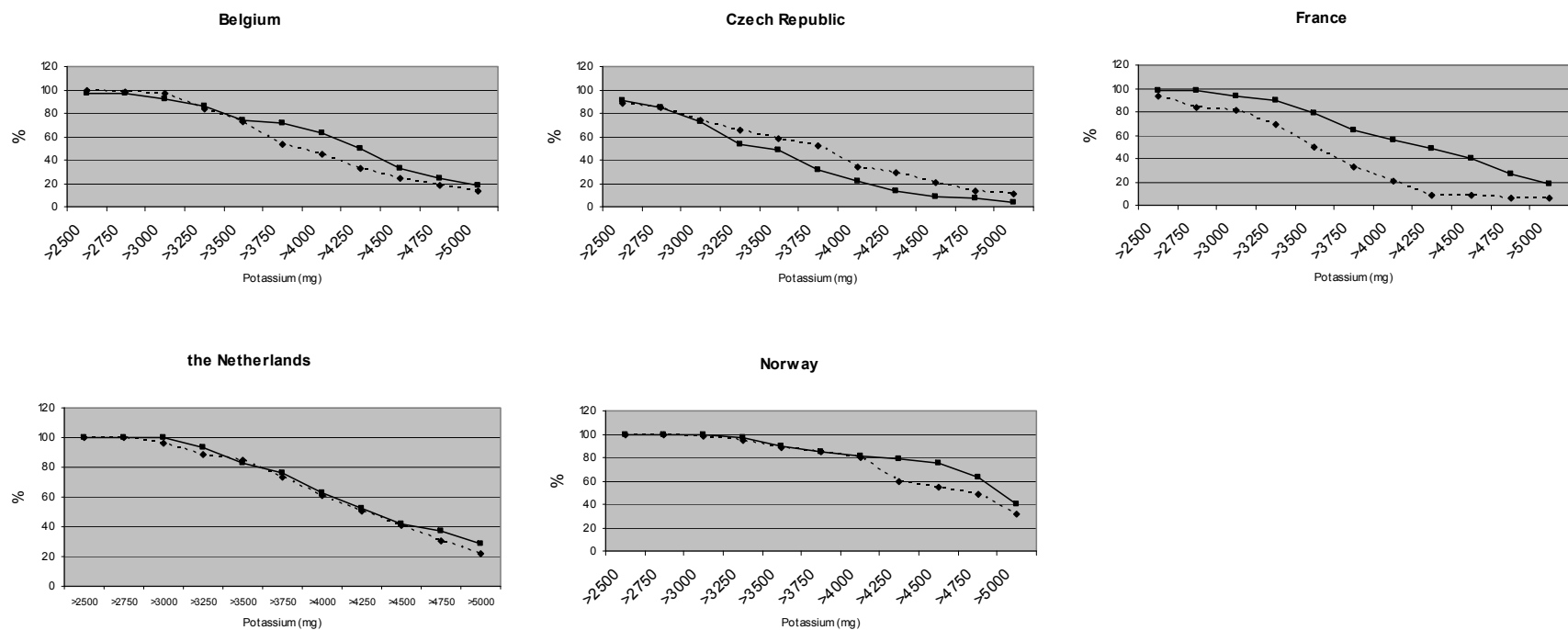


Figure S6– Prevalence of men consuming above specific amounts of potassium as estimated by usual intake distributions* from dietary recalls (intake) and biomarkers (excretion) for five European centers in the EFCOVAL validation study

* Usual intake/excretion distribution estimated by MSM method (see methods section).

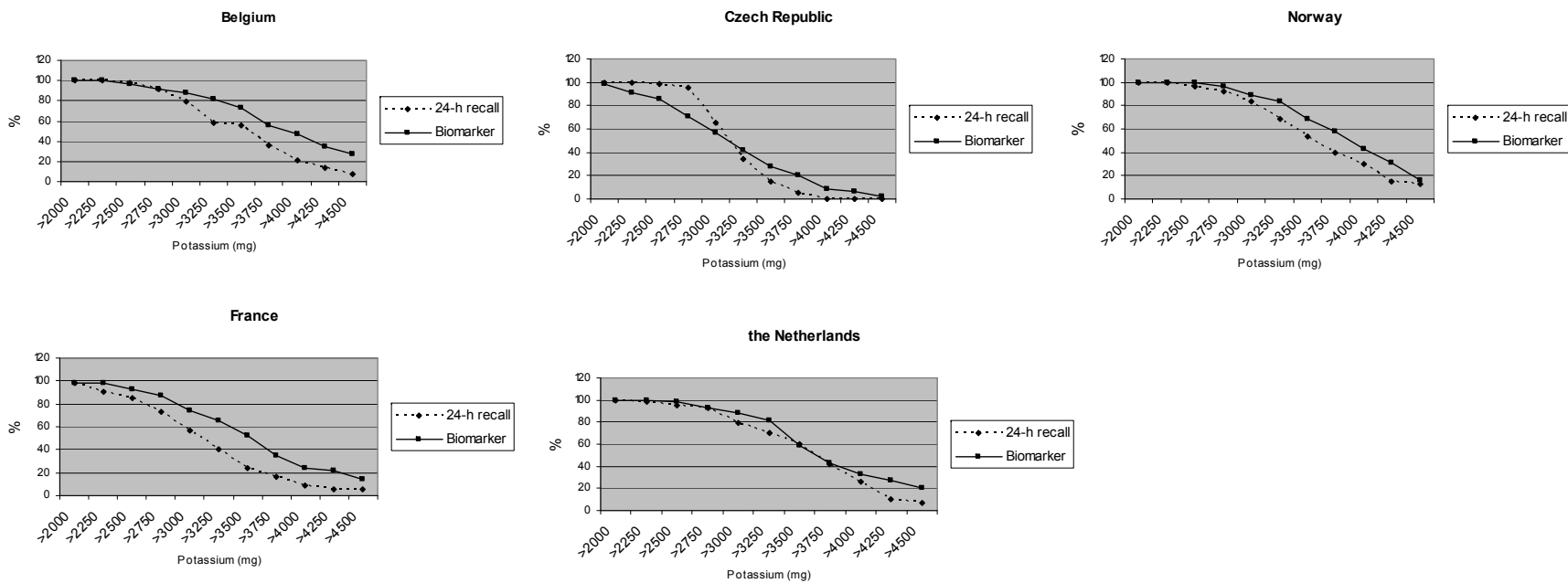


Figure S7 – Prevalence of women consuming above specific amounts of potassium as estimated by usual intake distributions* from dietary recalls (intake) and biomarkers (excretion) for five European centers in the EFCOVAL validation study

* Usual intake/excretion distribution estimated by MSM method (see methods section).