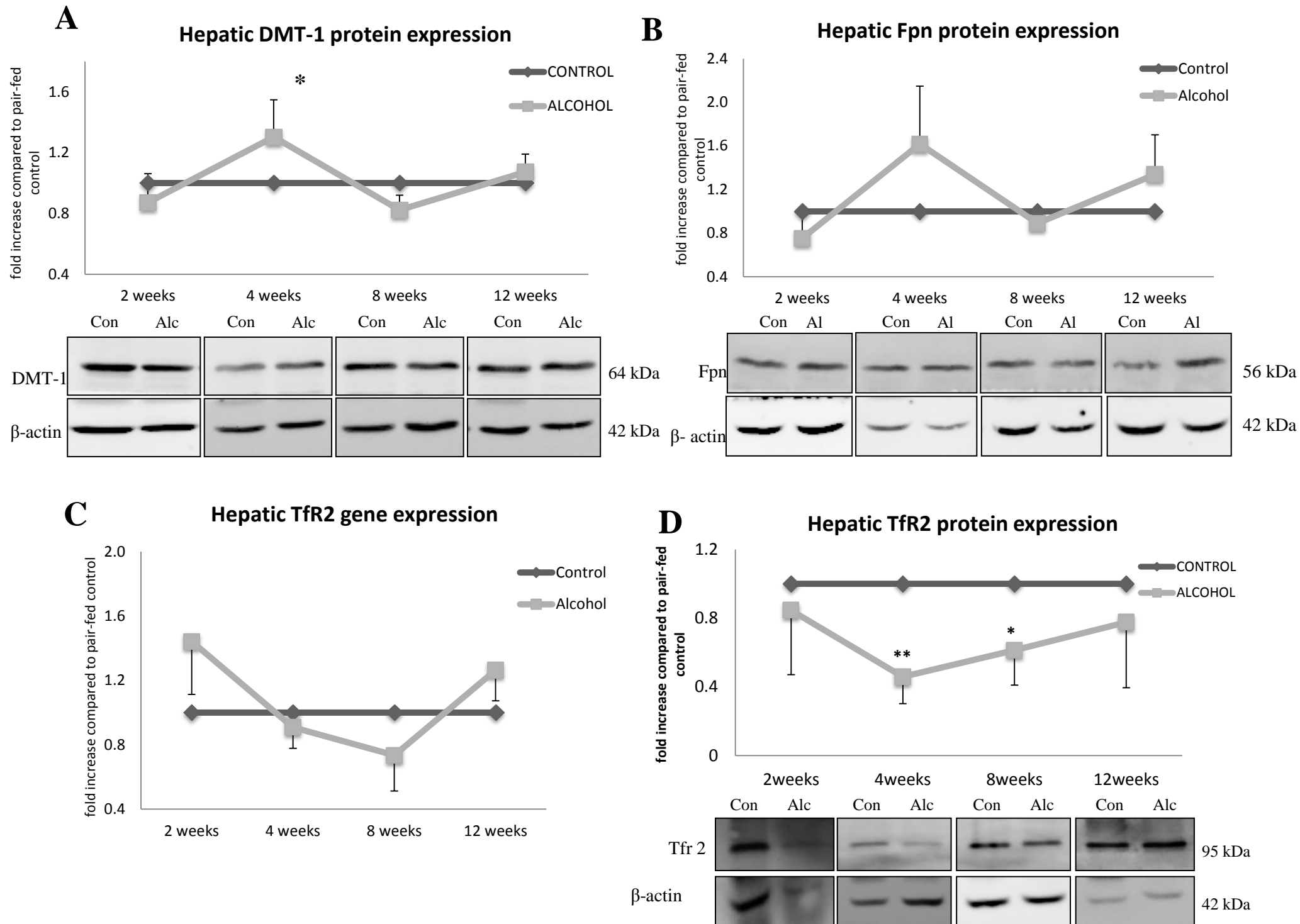


Suppl Fig 1



Suppl Fig 1: DMT1 (A), ferroportin (B) and TfR2 (D) protein levels estimated by western blotting. Representative blots along with densitometric quantification of blots are shown (n = 3 in each case). C: Gene expression of TfR2 estimated by qPCR (n = 3-6). Expression levels were normalized to that of beta-actin which was used as the reference gene. In all graphs, each bar represents mean \pm SE. * indicates $p < 0.05$ and ** indicates $p < 0.01$ when compared to corresponding pair-fed control.