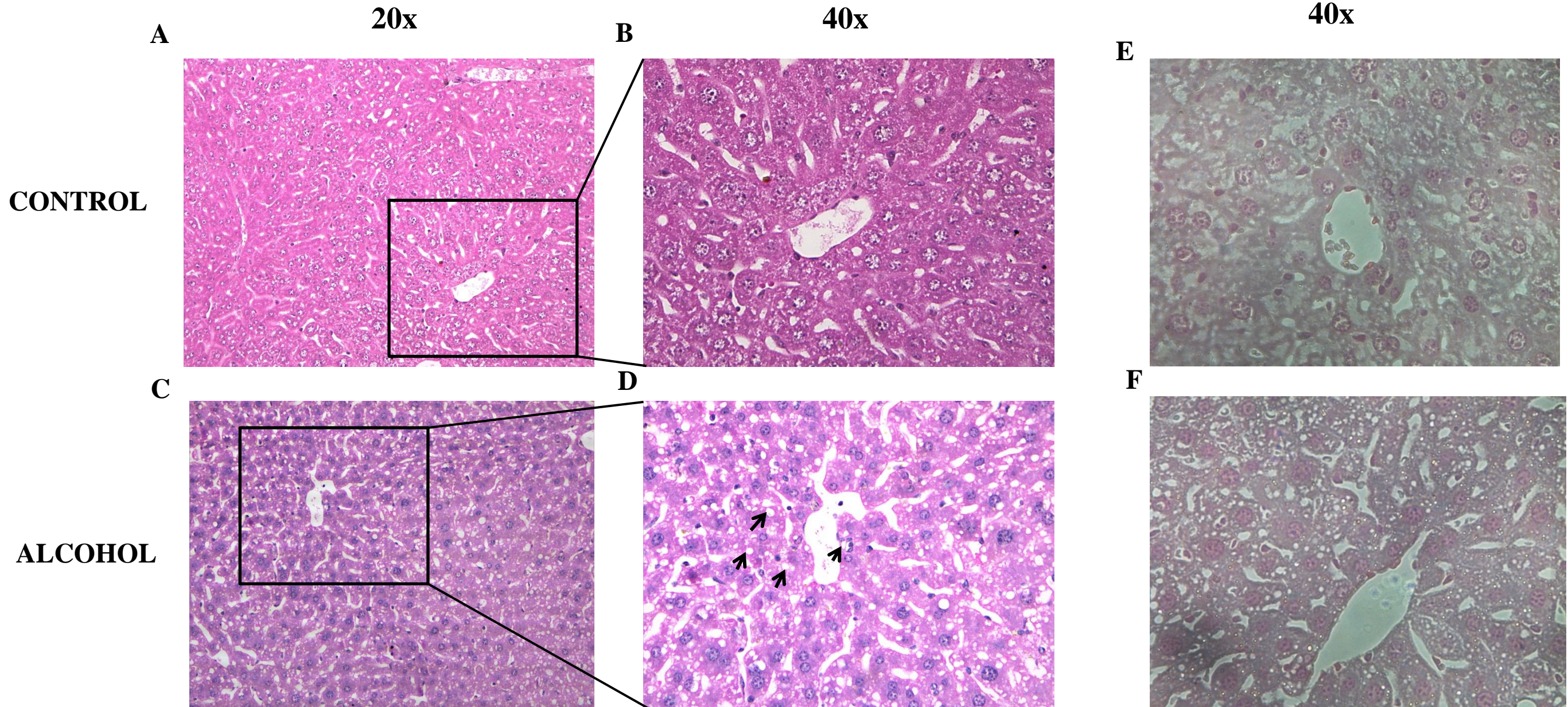


Suppl Fig 3

H & E stain

Perls' stain



Suppl Fig 3: H & E and Perls' Prussian Blue staining of liver sections

H & E stain of liver sections from mice fed control diet (A and B) or alcohol diet (C and D) for 12 weeks at 20x (A and C) or 40x (B and D) magnifications. The arrow heads show areas of centrilobular microvesicular steatosis in alcohol-fed mice. Perls' stain for iron did not show significant iron deposits in control (E) or alcohol-fed mice (F).