

Supplementary Data

Supplementary table 1. Composition of the diets offered to the animals, based on 1 kg of standard diet (AIN-93M) control or modified with 4.5% Gluten

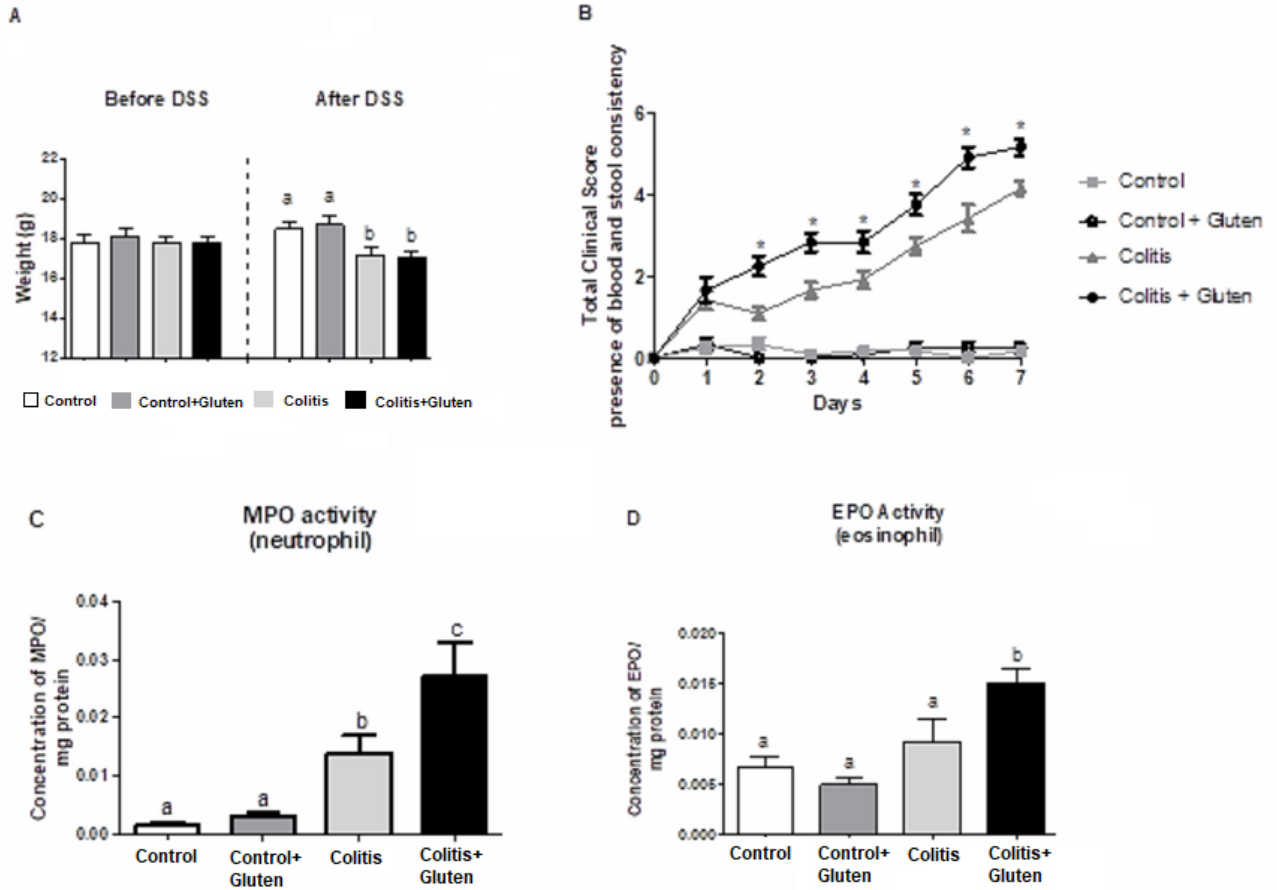
INGREDIENTS	AIN-93M (g)	AIN-93M with Gluten (g)
Corn starch ¹	465,7	465,7
Wheat gluten ²	-	45,0
Casein ⁴	140,0	106,0
Sucrose	100,0	93,0
Soybean oil ⁵	40,0	40,0
Maltodextrin	155,0	155,0
Cellulose	50,0	50,0
Mineral mix ⁶	35,0	35,0
BHT	0,008	0,008
Vitamins mix ⁶	10,0	10,0
Choline bitartrate	2,5	2,5
Methionine	1,8	1,8

¹ Milhena®; ²Glúten Vital Granotec®; ³Vilma traditional®; ⁴Proquimios®; ⁵Liza®; ⁶Rhoster®.

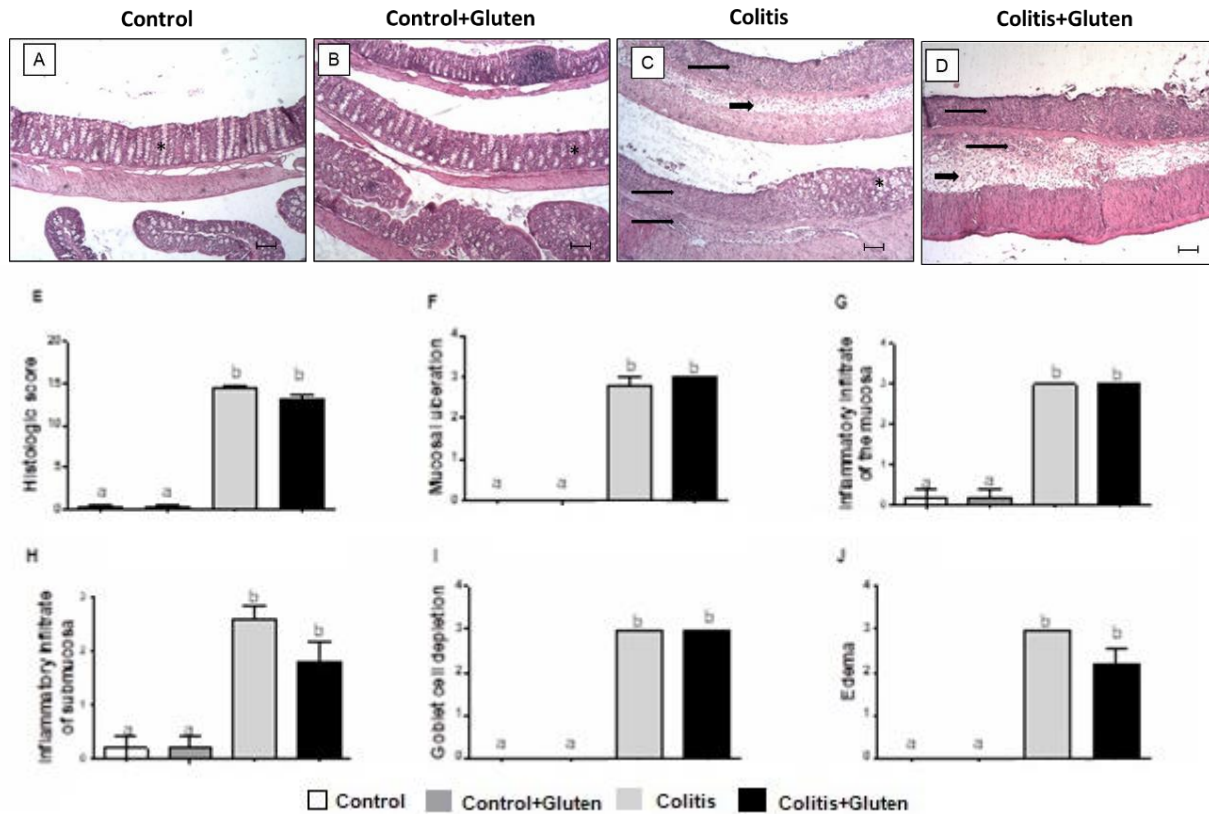
Supplementary table 2. Energy distribution (% of total caloric value) and caloric density of the standard diets (AIN-93M) controlled or modified with 4.5% Gluten

INGREDIENTS	AIN-93M (g)	AIN-93M with Gluten (g)
% Carbohydrate*	74,20	74,25
% Protein *	15,78	15,77
% Total fat*	10,02	9,98
Calories/gram	2,76	2,76

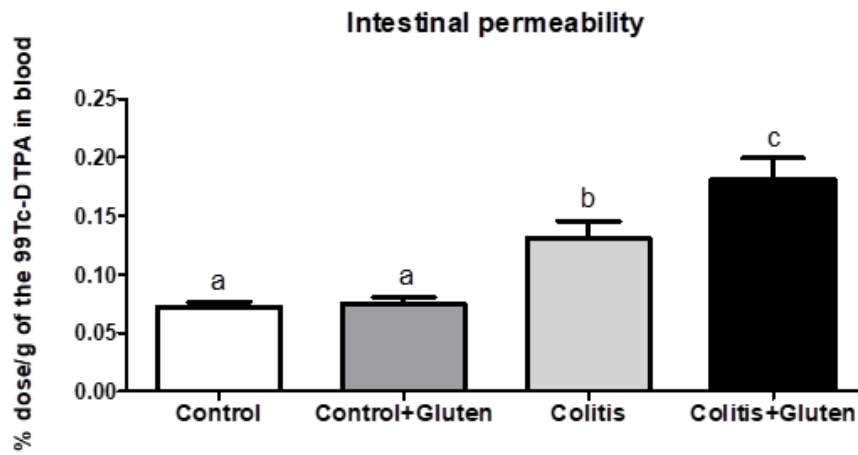
*% of total calories



Supplementary figure S1. Clinical and inflammatory parameters A. Body weight before and after DSS. B. Total clinical score. C,D. Inflammatory profile. MPO (myeloperoxidase), EPO (eosinophil peroxidase). Data expressed as the mean and standard error. One-way ANOVA (A; C–F) and two-way ANOVA (B) and Newman-Keuls post-test. *Statistically different from Control and Colitis groups and between Colitis and Colitis+Gluten group. Different letters represent statistical difference, $p < 0.05$ ($N = 4\text{--}6/\text{group}$).



Supplementary figure S2. Histological parameters. Tables A Control and B Control+Gluten groups, morphological integrity of the mucosa, absence of inflammatory infiltrate in the mucosa and submucosa or edema in the submucosa and presence of many goblet cells (asterisks); Table C Colitis and D Colitis + Gluten groups, mucosal ulceration is observed, with inflammatory infiltrate in both the mucosa and submucosa (long arrows) and edema regions in the submucosa (short arrows) and few goblet cells (asteriscos). The bar represents a scale of 100 μ m. E. Histologic score. F. Mucosal ulceration. G. Inflammatory infiltrate of the mucosa. H. Inflammatory infiltrate of submucosa. I. Goblet cell depletion. J. Edema. Results expressed as mean \pm standard error, (n = 5/group). One-way Anova and Newman-keuls post-test. Different letters represent statistical difference, p < 0.05.



Supplementary figure S3. Intestinal permeability. Determination of intestinal permeability using ^{99m}Tc DTPA. ANOVA one-way test. Different letters indicate statistical difference between groups ($p < 0.05$) (N of animals = 8–10/group).