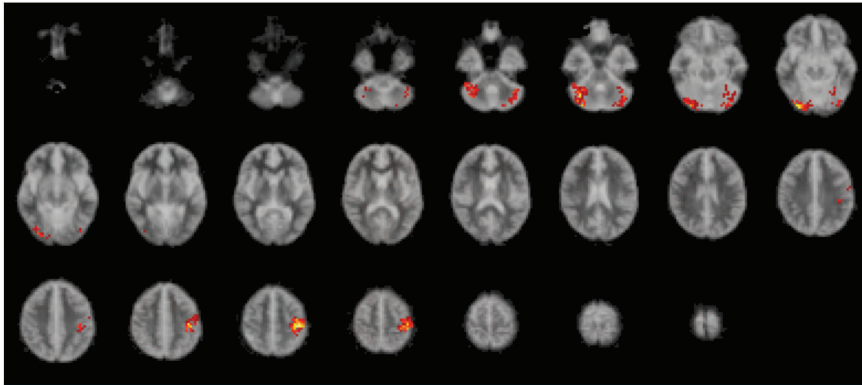
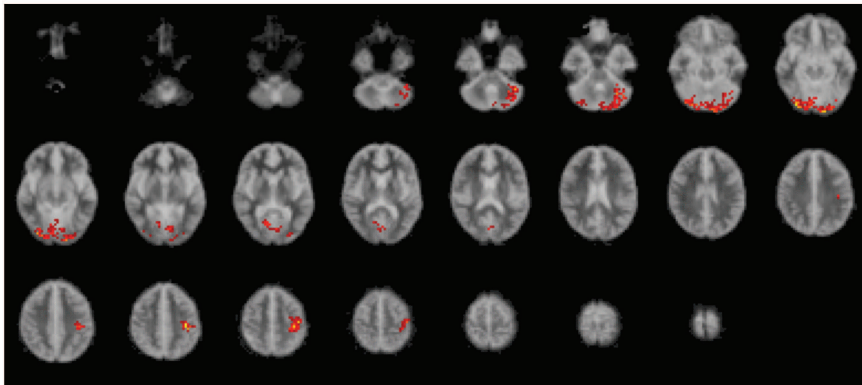


(a)



(b)



Data supplement 1 Brain regions in which the control group shows greater activation than the psychopathy group: in response to (a) fear, (b) happiness. Controls showed significantly greater activation in the extrastriate (including fusiform) and cerebellar cortices for both fear and happiness. Voxelwise $P=0.01$, clusterwise $P=0.05$ (thresholded to <1 false-positive cluster per brain). The right side of each slice represents the left side of the brain (see Tables 1 and 2 for a full description of functional anatomy and Talairach coordinates).