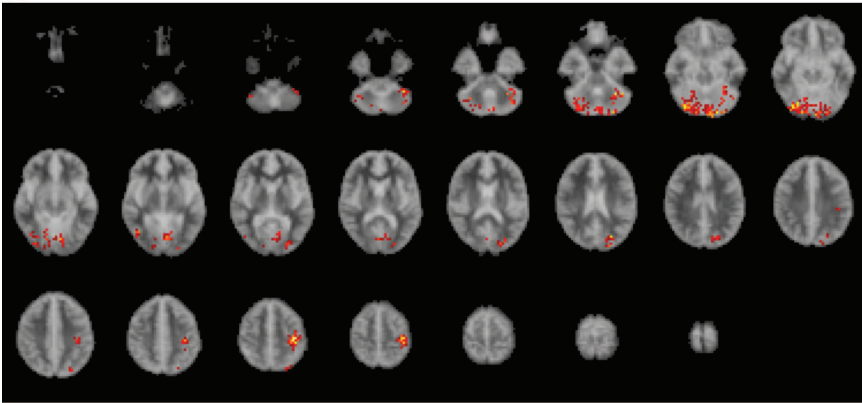
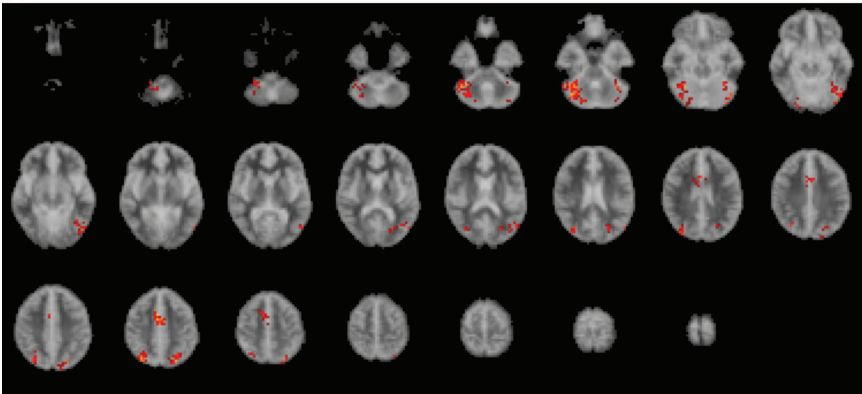


(a)



(b)



Data supplement 3 Within-group contrasts between responses to happy and neutral faces: (a) regions where the control group shows greater activation to happy faces than to neutral faces; (b) regions where the psychopathy group shows greater activation to happy faces than to neutral faces. Both control participants and those with psychopathy showed significantly greater activation to happy faces compared with neutral faces in the extrastriate (including fusiform) and cerebellar cortices. Voxelwise $P=0.01$, clusterwise $P=0.0025$. The right side of each slice represents the left side of the brain (see Tables 1 and 2 for a full description of functional anatomy and Talairach coordinates).