

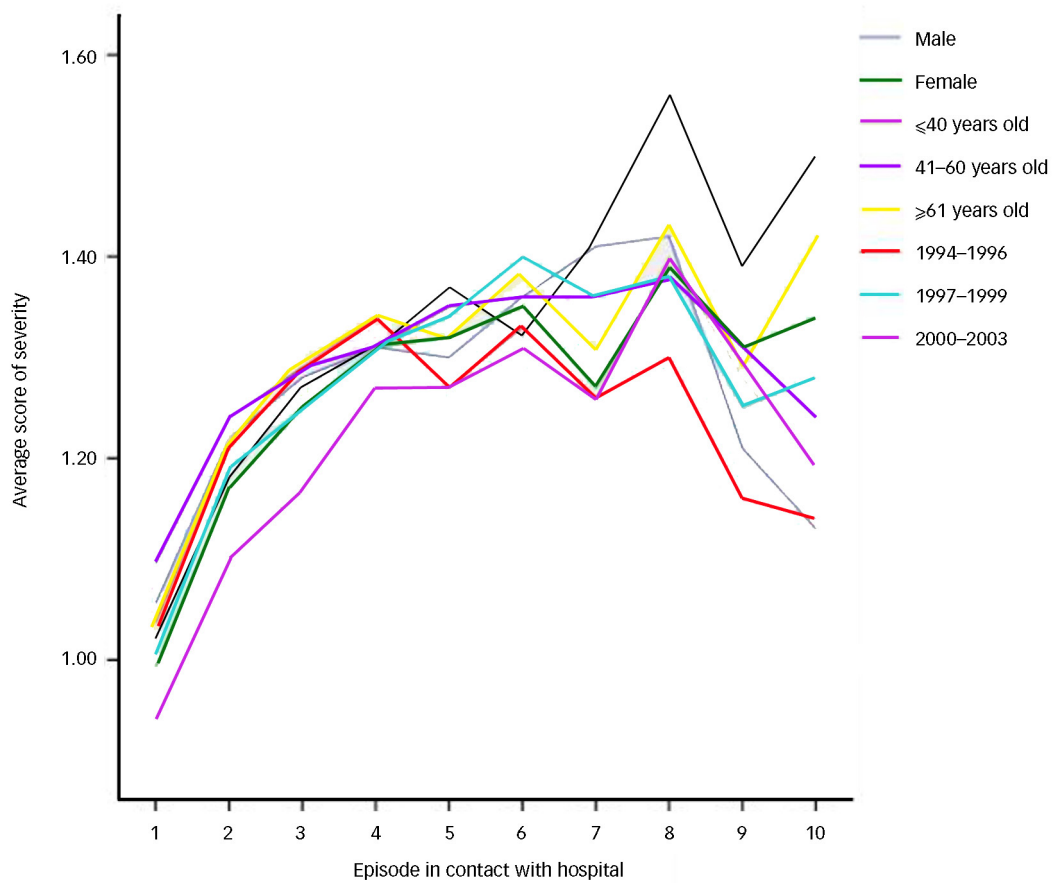
## Data supplement

**Table DS1** ICD-10 subtypes of depressive episodes in depressive disorder in relation to the number of episodes leading to hospital contact: in total and according to gender

Episode in contact with hospital	Total, <i>n</i> (%)	Total, mean (s.d.) <sup>a</sup>	Females, %	Males, %	<i>P</i> <sup>b</sup>
One ( <i>n</i> =19 392)			64.1		
Mild	4648 (24.0)		25.1	21.9	
Moderate	9792 (50.5)	1.02 (0.70)	50.4	50.6	0.0001
Severe	4952 (25.5)		24.5	27.5	
Psychotic	1686 (8.7)		8.3	9.3	0.008
Two ( <i>n</i> =8767)			64.3		
Mild	1451 (16.6)		17.1	15.5	
Moderate	4242 (48.4)	1.19 (0.69)	49.0	47.2	0.003
Severe	8767 (35.1)		33.8	37.3	
Psychotic	1080 (12.3)		11.8	13.3	0.02
Three ( <i>n</i> =4094)			66.2		
Mild	565 (13.8)		14.4	12.6	
Moderate	1906 (46.6)	1.26 (0.68)	46.6	46.5	0.2
Severe	1623 (39.6)		39.0	40.9	
Psychotic	583 (14.2)		14.1	14.4	0.4
Four ( <i>n</i> =2056)			67.4		
Mild	241 (11.7)		12.0	11.2	
Moderate	945 (46.0)	1.31 (0.67)	45.5	46.9	0.8
Severe	870 (42.3)		42.5	41.9	
Psychotic	324 (15.8)		16.2	14.8	0.2
Five ( <i>n</i> =1110)			67.5		
Mild	135 (12.2)		13.0	10.5	
Moderate	492 (44.3)	1.31 (0.68)	41.8	49.6	0.05
Severe	483 (43.5)		45.3	39.9	
Psychotic	190 (17.1)		14.7	18.3	0.08
Six ( <i>n</i> =649)			66.9		
Mild	75 (11.6)		13.1	8.4	
Moderate	272 (41.9)	1.35 (0.68)	39.2	47.4	0.06
Severe	302 (46.5)		47.4	44.2	
Psychotic	128 (19.7)		21.7	15.8	0.05
Seven ( <i>n</i> =397)			70.3		
Mild	48 (12.1)		14.3	6.8	
Moderate	177 (44.6)	1.31 (0.68)	44.4	44.9	0.09
Severe	172 (43.3)		41.2	48.3	
Psychotic	68 (17.1)		17.6	16.1	0.4
Eight ( <i>n</i> =245)			71.8		
Mild	23 (9.4)		10.8	5.8	
Moderate	101 (41.2)	1.40 (0.66)	39.2	46.4	0.4
Severe	121 (49.4)		50.0	47.8	
Psychotic	49 (20.0)		21.0	17.4	0.3
Nine ( <i>n</i> =136)			71.3		
Mild	15 (11.0)		13.4	5.1	
Moderate	67 (49.3)	1.29 (0.65)	41.2	69.2	0.01
Severe	54 (39.7)		45.4	25.6	
Psychotic	27 (19.9)		22.7	12.8	0.1
Ten ( <i>n</i> =85)			72.9		
Mild	13 (15.3)		14.5	17.4	
Moderate	35 (41.2)	1.28 (0.71)	37.1	52.2	0.3
Severe	37 (43.5)		48.4	30.4	
Psychotic	21 (24.7)		29.0	13.0	0.1
Fifteen ( <i>n</i> =20)			70.0		
Mild	3 (15.0)		7.1	33.3	
Moderate	7 (35.0)	1.35 (0.74)	35.7	33.3	0.3
Severe	10 (50.0)		57.1	33.3	
Psychotic	5 (25.0)		–	–	–

a. With mild, moderate and severe episodes scored at 0, 1 and 2 respectively.

b. Chi-squared test, gender v. severity (mild/moderate/severe) and gender v. psychotic symptoms (depressive episodes with psychotic symptoms v. other depressive episodes), two-sided.



**Fig. DS1** Average scores of severity of depressive episodes. Mild, moderate and severe were scored at 0, 1 and 2 respectively. Curves according to gender, age at first contact ( $\leq 40$  years; 41–60 years;  $\geq 61$  years) and period of first contact (1994–1996; 1997–1999; 2000–2003).