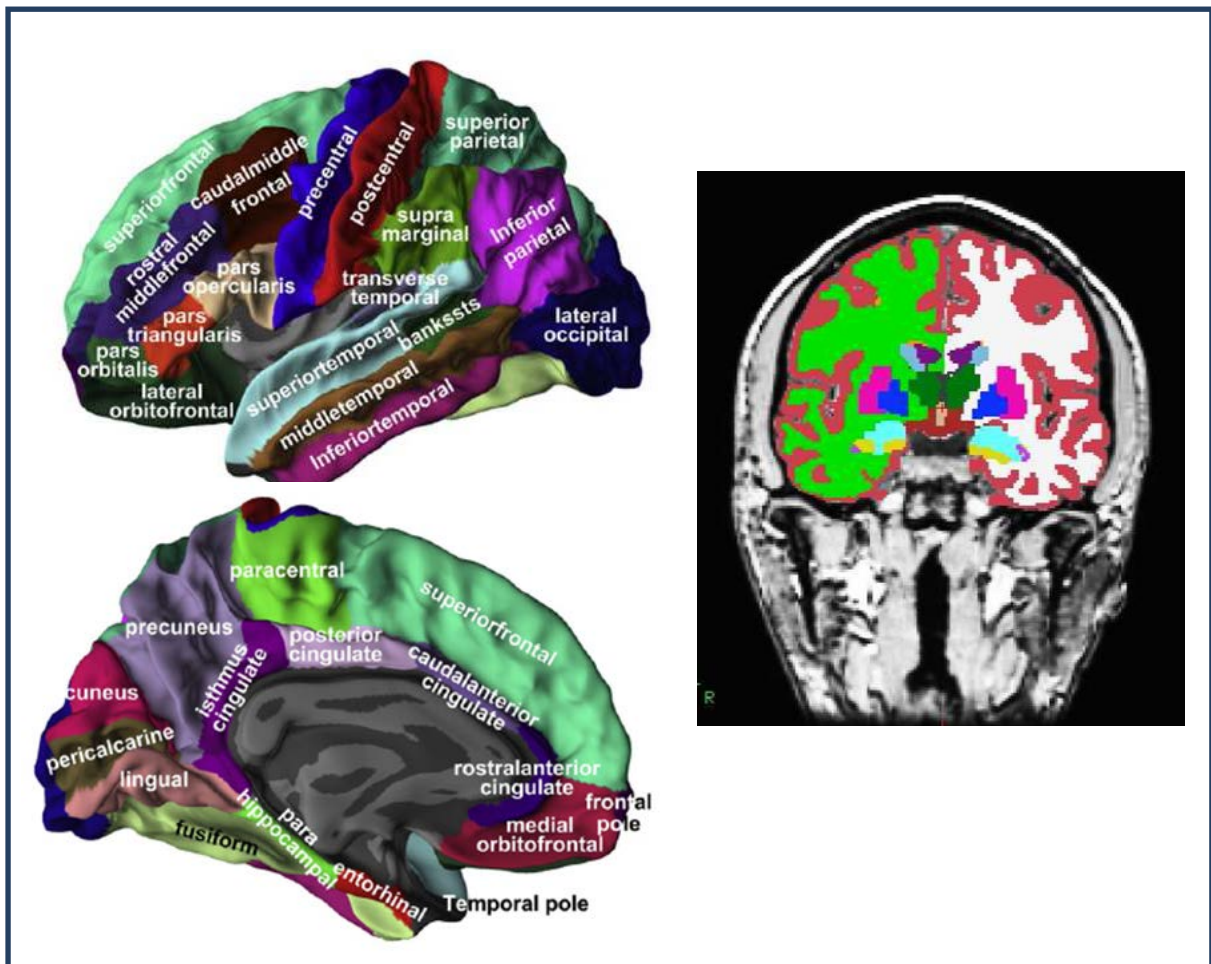


MacGregor Legge et al. Modulatory effects of brain-derived neurotrophic factor Val66Met polymorphism on prefrontal regions in major depressive disorder. *Br J Psychiatry* doi: 10.1192/bjp.bp.113.143529

Online data supplement

Fig. DS1

Depiction of the parcellation of cerebral regions onto lateral and medial hemispheres and coronal cross-section indicating location of subcortical regions and the grey matter–white matter boundary using Freesurfer version 5.1.0 (<http://surfer.nmr.mgh.harvard.edu/>). See supplementary references 48–50.



Supplementary references

48. Fischl B, Sereno MI, Tootell RB, Dale AM. High-resolution intersubject averaging and a coordinate system for the cortical surface. *Hum Brain Mapp* 1999; **8**:272–284.
49. Fischl B, Salat DH, Busa E, Albert M, Dieterich M, Haselgrove C, et al. Whole brain segmentation: automated labeling of neuroanatomical structures in the human brain. *Neuron* 2002; **33**:341–355.
50. Desikan RS, Ségonne F, Fischl B, Quinn BT, Dickerson BC, Blacker D, et al. An automated labeling system for subdividing the human cerebral cortex on MRI scans into gyral based regions of interest. *Neuroimage* 2006; **31**:968–980.