

Data supplement to Rabinowitz et al. Initial severity not related to antidepressant benefits or placebo response: patient-level data analysis from 34 randomised controlled trials. Br J Psychiatry doi: 10.1192/bjp.bp.115.173906

Online supplement DS1

List of studies included

Name / Publication / Registration number	Treatment (active treatment, placebo sample sizes)
Astra Zeneca	
D1448C00001 [1] NCT00320268	Quetiapine: n=539; Placebo: n=184
D1448C00002 [2] NCT00321490	Quetiapine: n=304; Placebo: n=157
D1448C00003 [3] NCT00326144	Quetiapine: n=154; Placebo: n=156
D1448C00014 [4] NCT00388973	Quetiapine: n=24; Placebo: n=27
Lundbeck	
85A	Citalopram: n=89; Placebo: n=91
89303	Citalopram: n=134; Placebo: n=66
89306	Citalopram: n=185; Placebo: n=89
91206	Citalopram: n=521; Placebo: n=129
99001	Escitalopram: n=154; Placebo: n=147
99003	Escitalopram + Citalopram: n=157; Placebo: n=117
99024	Escitalopram + Fluoxetine: n=269; Placebo: n=142
Pfizer	
101	Sertraline: n=96; Placebo: n=25
103	Sertraline: n=278; Placebo: n=91
104	Sertraline + Amisulpride: n=299; Placebo: n=150
109	Sertraline + Amisulpride: n=211; Placebo: n=104
111	Sertraline + Fluoxetine: n=225; Placebo: n=110
310	Sertraline: n=140; Placebo: n=34
315	Sertraline + Amisulpride: n=162; Placebo: n=80
n-238	Sertraline: n=159; Placebo: n=40
n-240	Sertraline + Desipramine: n=70; Placebo: n=35
n-247	Sertraline + Desipramine: n=88; Placebo: n=42
r-0167	Sertraline + Amisulpride: n=259; Placebo: n=126
A0501075 NCT00636246	Sertraline + Reboxetine: n=468; Placebo: n=51
Lilly	
F1J-MC-HMAQA	Duloxetine + Fluoxetine: n=103; Placebo: n=70
F1J-MC-HMAQB	Duloxetine + Fluoxetine: n=119; Placebo: n=74
F1J-MC-HMATA	Duloxetine + Paroxetine: n=264; Placebo: n=90
F1J-MC-HMATB	Duloxetine + Paroxetine: n=264; Placebo: n=89
F1J-MC-HMAYA	Duloxetine + Paroxetine: n=274; Placebo: n=93
F1J-MC-HMAYB	Duloxetine + Paroxetine: n=293; Placebo: n=99
F1J-MC-HMBHA	Duloxetine: n=123; Placebo: n=122
F1J-MC-HMBHB	Duloxetine: n=128; Placebo: n=139
F1J-MC-HQAC	Duloxetine: n=34; Placebo: n=35
F1J-US-HMFA [5] NCT00406848	Duloxetine: n=237; Placebo: n=133
F1J-US-HMFS NCT00536471	Duloxetine: n=586; Placebo: n=190

Additional References

1. Weisler, R., et al., *Extended release quetiapine fumarate monotherapy for major depressive disorder: results of a double-blind, randomized, placebo-controlled study*. CNS Spectr, 2009. **14**(6): p. 299-313.
2. Cutler, A.J., et al., *Extended release quetiapine fumarate monotherapy in major depressive disorder: a placebo- and duloxetine-controlled study*. J Clin Psychiatry, 2009. **70**(4): p. 526-39.
3. Bortnick, B., et al., *Efficacy and tolerability of extended release quetiapine fumarate (quetiapine XR) monotherapy in major depressive disorder: a placebo-controlled, randomized study*. J Affect Disord, 2011. **128**(1-2): p. 83-94.
4. Katila, H., et al., *Randomized, double-blind study of the efficacy and tolerability of extended release quetiapine fumarate (quetiapine XR) monotherapy in elderly patients with major depressive disorder*. Am J Geriatr Psychiatry, 2013. **21**(8): p. 769-84.
5. Oakes, T.M., et al., *Safety and tolerability of duloxetine in elderly patients with major depressive disorder: a pooled analysis of two placebo-controlled studies*. Int Clin Psychopharmacol, 2013. **28**(1): p. 1-11.

Figure DS1. Change on Hamilton Rating Scale for Depression (HRSD, also known as the HAMD) to end-point by baseline severity – patient level data

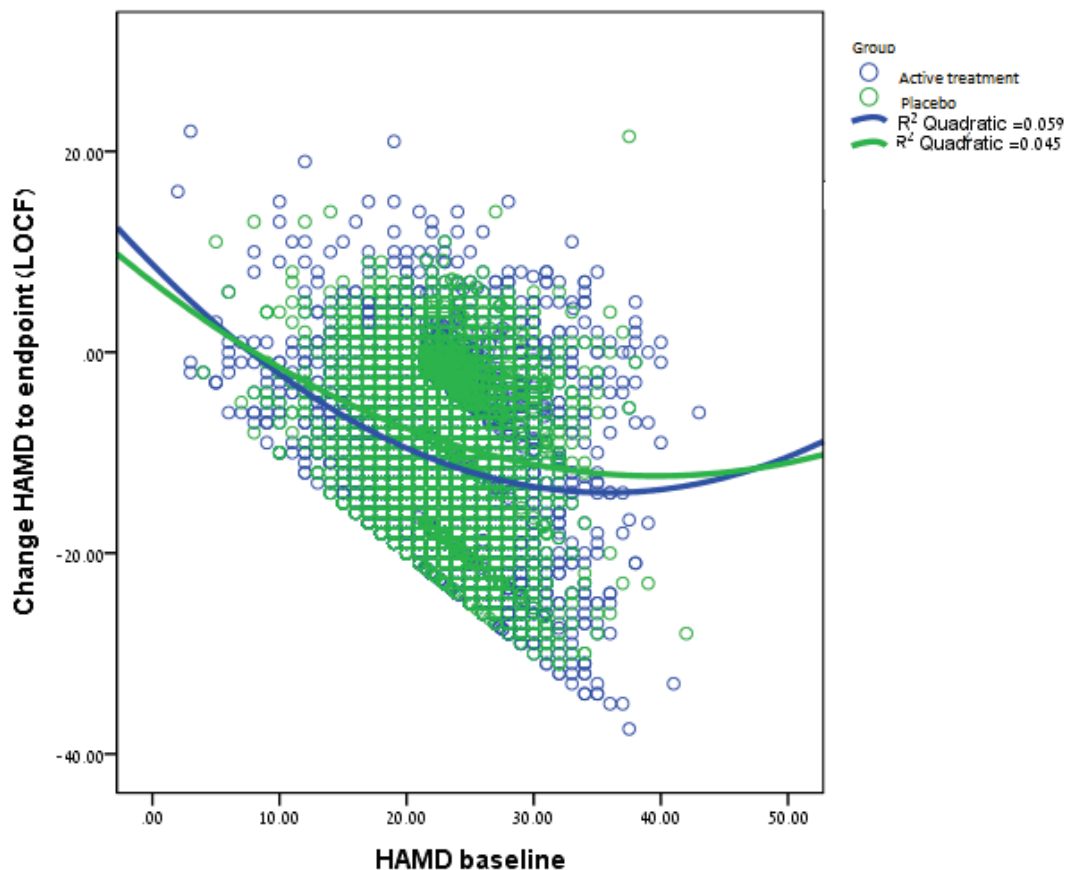


Figure DS2. Change on Hamilton Rating Scale for Depression (HRSD, also known as the HAMD) to end-point by baseline severity – trial level meta-analysis

