

Data supplement

Lilienfeld *et al* (S. Lilienfeld, personal communication, 2008) Psychopathic Personality Inventory scores for a sample of male substance misusing prisoners.

Total score: mean=388.87 (s.d.=40.89)

Machiavellian egocentricity: mean=70.02 (s.d.=14.71)

Social potency: mean=64.98 (s.d.=11.48)

Fearlessness: mean=50.28 (s.d.=10.40)

Coldheartedness: mean=44.73 (s.d.=8.29)

Impulsive non-conformity: mean=38.01 (s.d.=7.64)

Blame externalisation: mean=43.71 (s.d.=10.08)

Carefree non-planfulness: mean=39.38 (s.d.=8.75)

Stress immunity: mean=31.06 (s.d.=5.87)

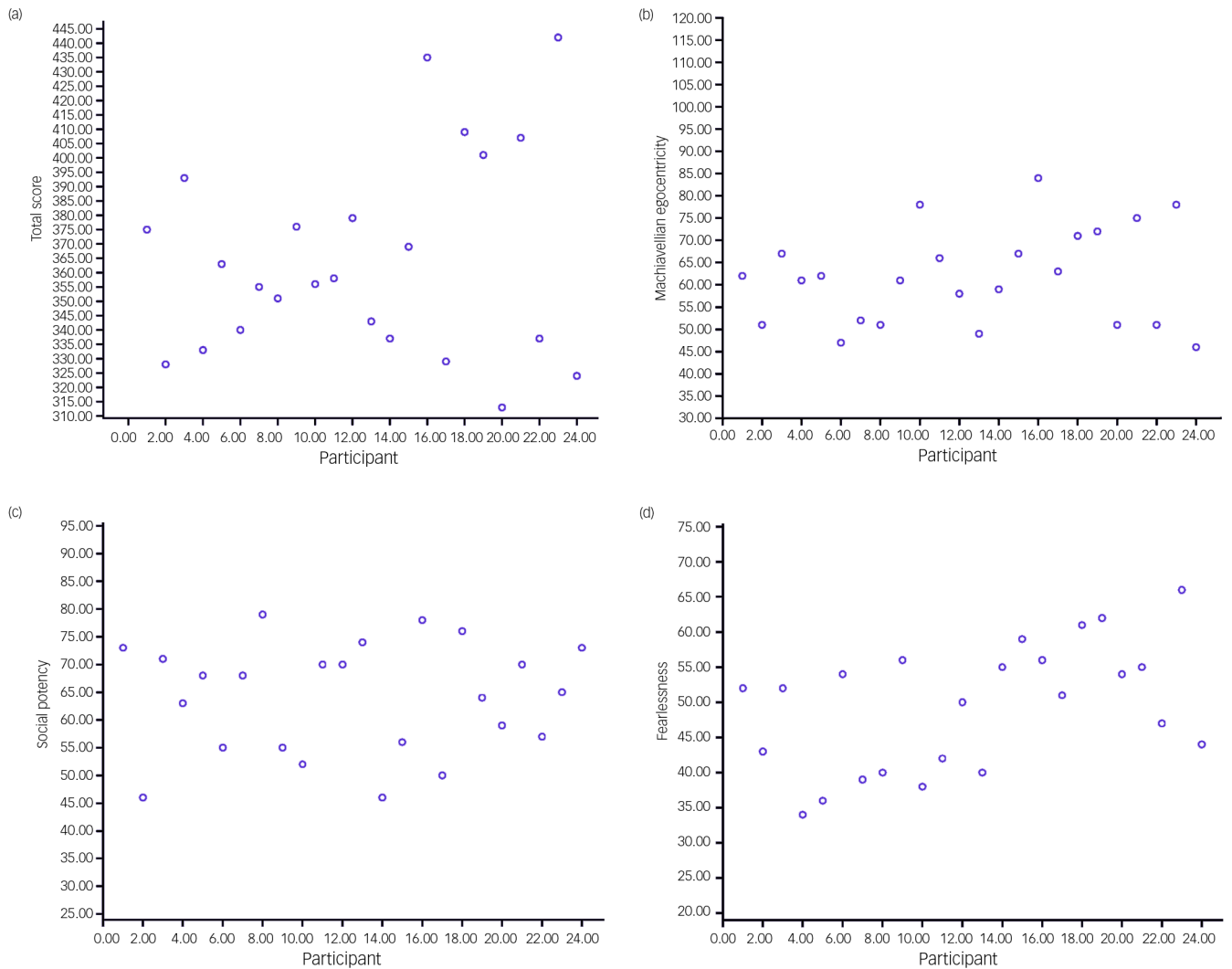


Fig. DS1 Psychopathic Personality Inventory (a) total and sub-scale score distributions for the sample. Sub-scales: (b) Machiavellian egocentricity, (c) social potency, (d) fearlessness, (e) coldheartedness, (f) impulsive non-conformity, (g) blame externalisation, (h) carefree non-planfulness, (i) stress immunity.

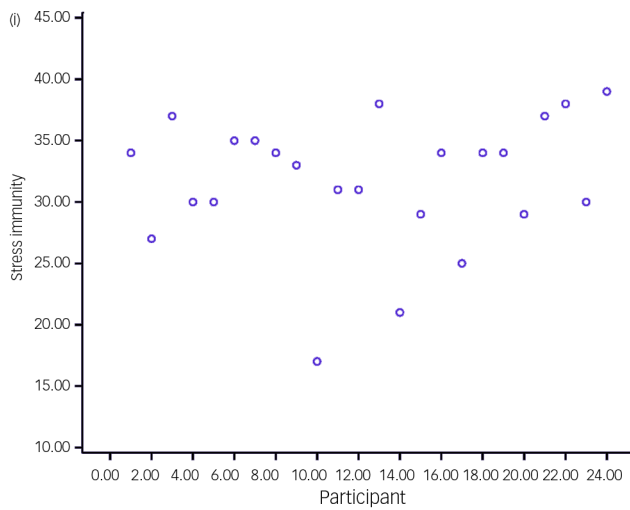
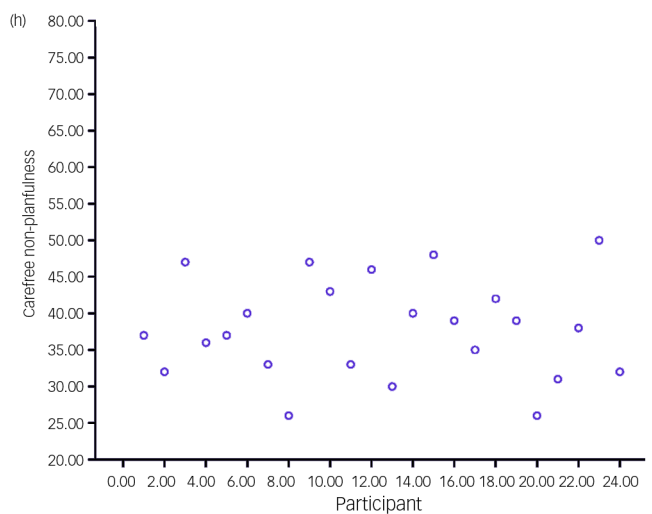
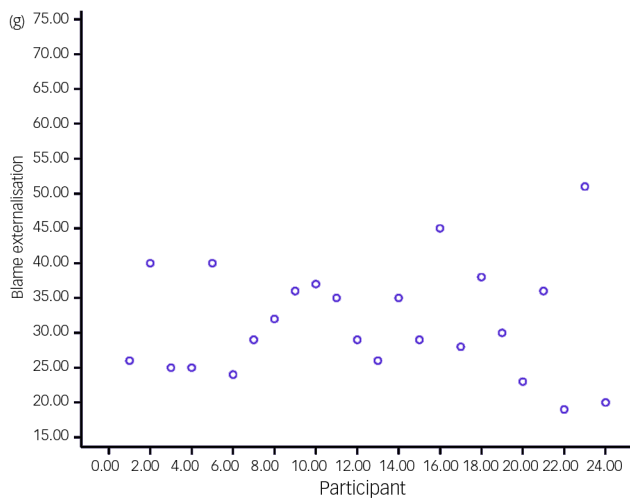
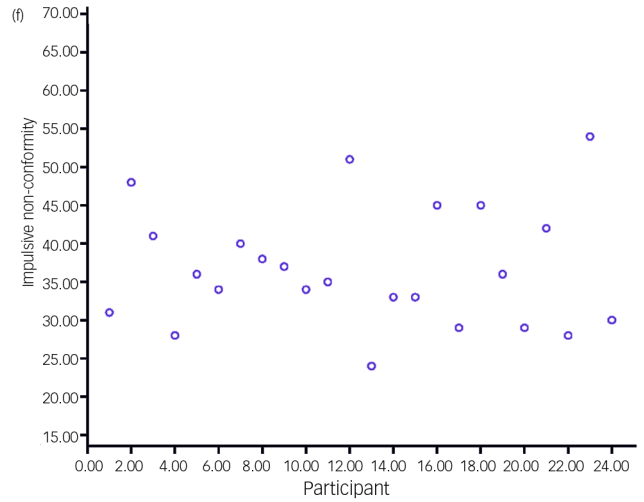
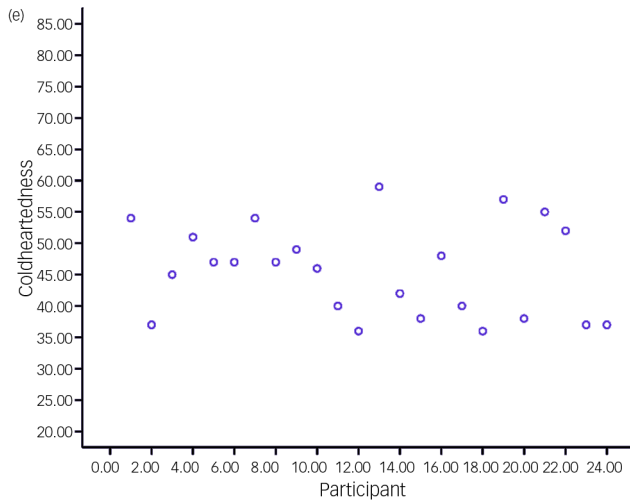


Fig. DS1 continued

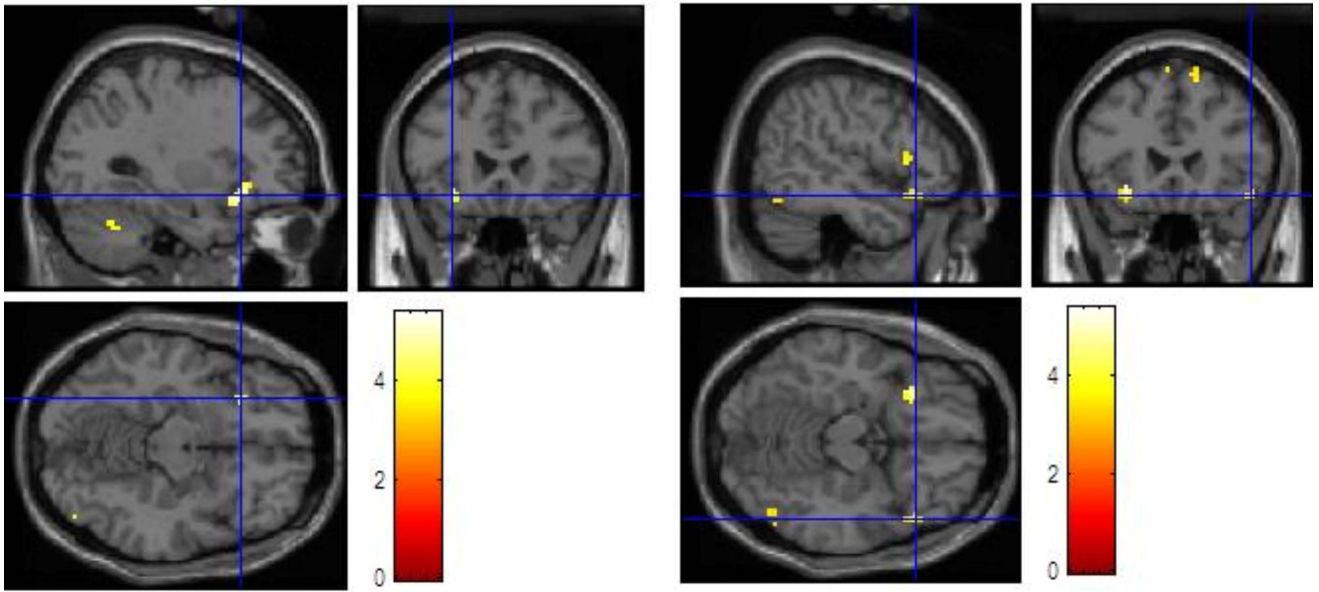


Fig. DS2 Blood oxygen level dependent responses in the bilateral ventrolateral prefrontal cortex during the lie condition.