

doi: 10.1192/bjp.bp.112.118307

Late-life depression and risk of vascular dementia and Alzheimer's disease: systematic review and meta-analysis of community-based cohort studies

Breno S. Diniz, Meryl A. Butters, Steven M. Albert, Mary Amanda Dew, Charles F. Reynolds

Fig. DS1 Forest plot for the comparison: Alzheimer's disease v. Vascular Dementia in participants with late-life depression.

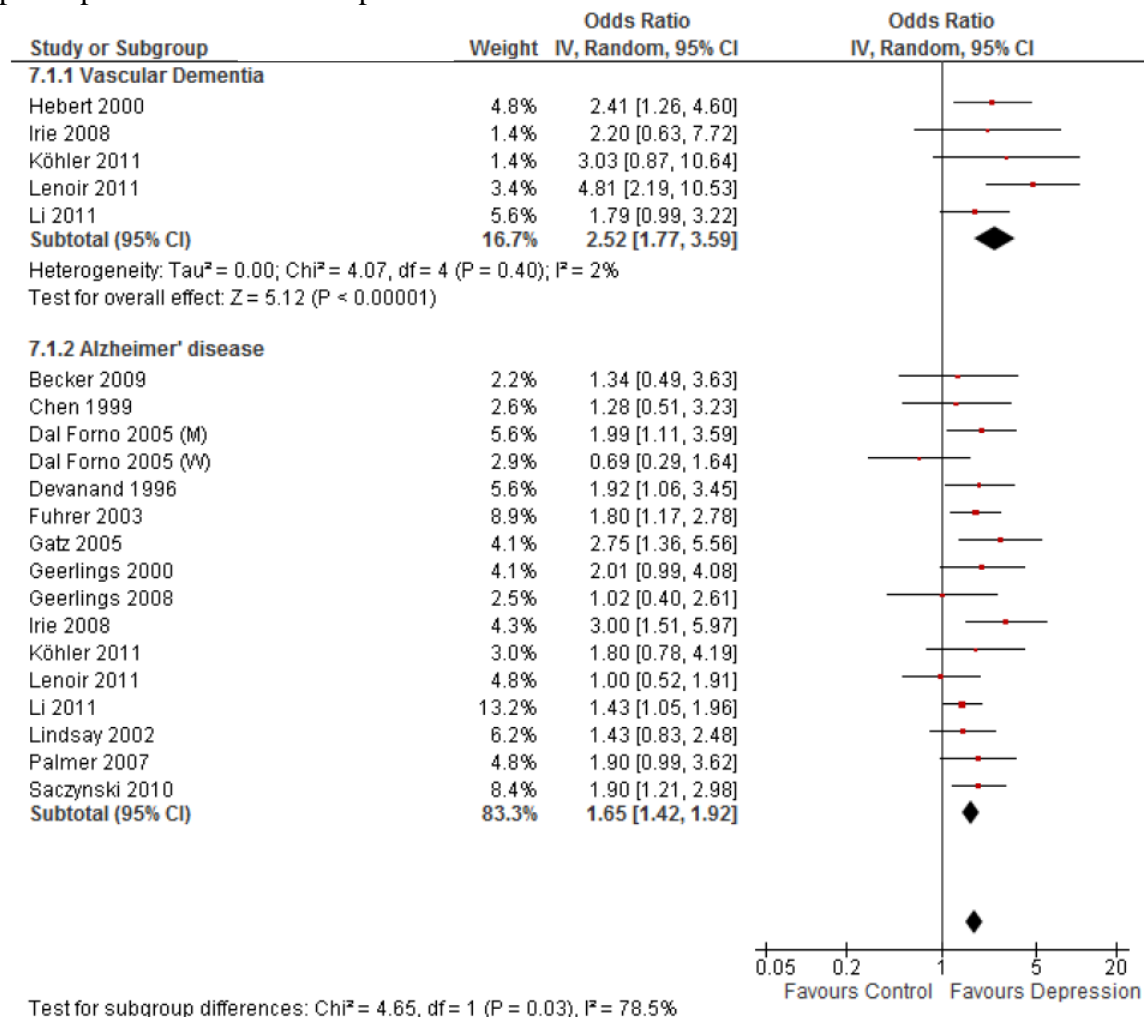


Fig. DS2 Funnel plot for dementia studies.

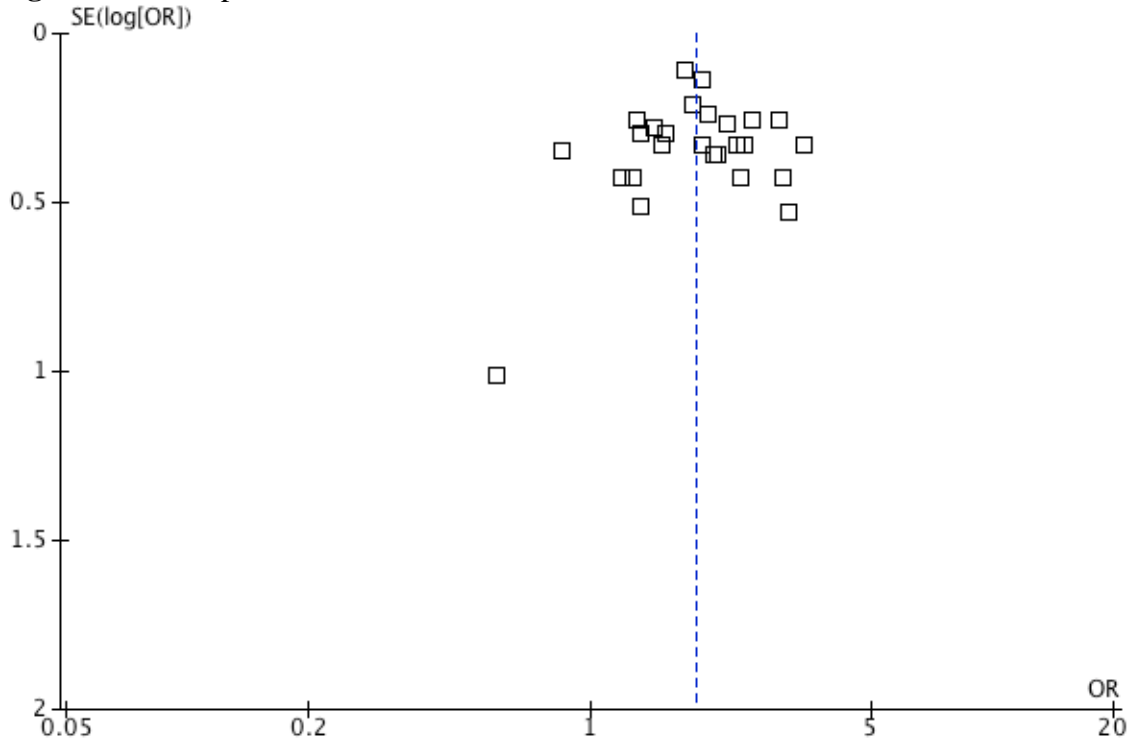


Table DS1 Quality assessment of the included studies in the meta-analysis

Author, year	1	2	3	4	5A	5B	6	7	8
Bassuk, 1998	yes	yes	yes	yes	yes	yes	no	yes	yes
Becker, 2009	yes	yes	yes	yes	yes	yes	yes	yes	yes
Chen, 1999	yes	yes	yes	yes	yes	yes	yes	yes	yes
Chen, 2008 (British cohort)	yes	yes	yes	yes	yes	yes	yes	yes	yes
Chen, 2008 (Chinese cohort)	yes	yes	yes	yes	yes	yes	no	no	yes
dal Forno, 2005	yes	yes	yes	yes	yes	yes	yes	yes	yes
Devanand, 1996	no	yes	yes	yes	yes	yes	yes	yes	yes
Fuhrer, 2003	yes	yes	yes	yes	NR	NR	yes	yes	yes
Gatz, 2005	yes	yes	yes	yes	NR	NR	no	yes	yes
Geerlings, 2000	yes	yes	yes	yes	NR	yes	yes	yes	yes
Geerlings, 2008	yes	yes	yes	yes	yes	yes	yes	yes	yes
Goveas, 2011	no	yes	yes	yes	yes	yes	yes	yes	yes
Hebert, 2000	yes	yes	yes	yes	yes	yes	yes	yes	yes
Irie, 2008	no	yes	yes	yes	yes	yes	yes	yes	yes
Kim, 2010	no	yes	yes	yes	yes	yes	no	yes	yes
Köhler, 2011	yes	yes	yes	yes	yes	yes	yes	yes	yes
Lenoir, 2011	yes	yes	yes	yes	yes	yes	yes	yes	yes
Li, 2011	no	yes	yes	yes	yes	yes	yes	yes	yes
Lindsay, 2002	yes	yes	yes	yes	yes	yes	yes	yes	yes
Palmer, 2007	no	yes	yes	yes	yes	yes	yes	yes	yes
Palsson, 1999	no	yes	yes	yes	NR	NR	no	yes	yes
Saczynski, 2010	yes	yes	yes	yes	yes	yes	yes	yes	yes
Spira, 2011	no	yes	yes	yes	yes	yes	yes	yes	yes
Yaffe, 1999	no	yes	yes	yes	yes	yes	yes	yes	yes

1 - cohort truly representative; 2 - controls from the same cohort 3 - ascertainment of exposure; 4 - outcome of interest not present at start; 5A - cohorts comparable on age; 5B - cohort comparable on other factors; 6 - quality of outcome assessment; 7 - Follow-up long enough for outcomes to occur; 8 - Complete accounting for cohorts. NR: not reported.

Table DS3 Studies that report adjusted risk measures and the adjustment variables for each study

<i>Author, year</i>	<i>Adjusted by:</i>
Bassuk, 1998	age, cognition at baseline
Becker, 2009	-
Chen, 1999	age, sex, education
Chen, 2008 (British cohort)	age, sex, education, CVD, medication (clinical and psychiatric)
Chen, 2008 (Chinese cohort)	age, sex, education, CVD, medication (clinical and psychiatric)
dal Forno, 2005 (M)	-
dal Forno, 2005 (W)	-
Devanand, 1996	age, sex, education, cognition at baseline
Fuhrer, 2003	age, sex, education, cognition at baseline
Gatz, 2005	-
Geerlings, 2000	age, sex, education, memory complaints, psychiatric history
Geerlings, 2008	age, sex, education, cognition at baseline, memory complaints, hippocampal volume and WMH
Goveas, 2011	age, ethnicity, education, family income, marital status, CVD, vascular risk factors, hormonal therapy, cognition at baseline
Hebert, 2000	age
Irie, 2008	age, education, memory complaint, cognition at baseline, vascular risk factors, CVD
Kim, 2010	age, education, disability and physical activity
Köhler, 2011	-
Lenoir, 2011	age, sex, education, cognition at baseline, vascular risk factors, CVD, medication (psychiatric), memory complaint, self-perceived health, functional limitations, ApoE genotype
Li, 2011	age, sex, education, cognition at baseline
Lindsay, 2002	age, sex, education
Palmer, 2007	-
Palsson, 1999	-
Saczynski, 2010	age, sex, education, ApoE genotype
Spira, 2011	age, education, alcohol use, medication
Yaffe, 1999	age, education, alcohol use, health status, physical activity, functional status