

Data supplement to Nelson et al. Childhood maltreatment and characteristics of adult depression: meta-analysis. *Br J Psychiatry* doi: 10.1192/bjp.bp.115.180752

Supplement DS1

Studies included in meta-analysis

1. Afifi TO, Brownridge DA, Cox BJ, Sareen J. Physical punishment, childhood abuse and psychiatric disorders. *Child Abuse Negl* 2006; **30**(10):1093-103.
2. Allen B. An analysis of the impact of diverse forms of childhood psychological maltreatment on emotional adjustment in early adulthood. *Child Maltreat* 2008; **13**(3):307-12.
3. Allers CT, Benjack KJ. Connections between childhood abuse and HIV infection. *J Couns Dev* 1991; **70**(2):309-13.
4. Almeida OP, Alfonso H, Pirkis J, Kerse N, Sim M, Flicker L, et al. A practical approach to assess depression risk and to guide risk reduction strategies in later life. *Int Psychogeriatr* 2011; **23**(2):280-91.
5. Ammerman RT, Putnam FW, Chard KM, Stevens J, van Ginkel JB. PTSD in depressed mothers in home visitation. *Psychol Trauma* 2012; **4**(2):186-95.
6. Andrews B. Bodily shame as a mediator between abusive experiences and depression. *J Abnorm Psychol* 1995; **104**(2):277-85.
7. Andrews B, Hunter E. Shame, early abuse, and course of depression in a clinical sample: A preliminary study. *Cogn Emot* 1997; **11**(4):373-81.
8. Andrews B, Valentine ER, Valentine JD. Depression and eating disorders following abuse in childhood in two generations of women. *Br J Clin Psychol* 1995; **34**(1):37-52.
9. Angst J, Gamma A, Rössler W, Ajdacic V, Klein DN. Childhood adversity and chronicity of mood disorders. *Eur Arch Psychiatry Clin Neurosci* 2011; **261**(1):21-7.
10. Appel K, Schwahn C, Mahler J, Schulz A, Spitzer C, Fenske K, et al. Moderation of adult depression by a polymorphism in the FKBP5 gene and childhood physical abuse in the general population. *Neuropsychopharmacology* 2011; **36**(10):1982-91.
11. Arata CM, Langhinrichsen-Rohling J, Bowers D, O'Farrill-Swails L. Single versus multi-type maltreatment: An examination of the long-term effects of child abuse. *J Aggress Maltreat Trauma* 2005; **11**(4):29-52.
12. Bagley C, Wood M, Young L. Victim to abuser: Mental health and behavioral sequels of child sexual abuse in a community survey of young adult males. *Child Abuse Negl* 1994; **18**(8):683-97.
13. Bailey K, Webster R, Baker AL, Kavanagh DJ. Exposure to dysfunctional parenting and trauma events and posttraumatic stress profiles among a treatment sample with coexisting depression and alcohol use problems. *Drug Alcohol Rev* 2012; **31**(4):529-37.
14. Balsam KF, Lehavot K, Beadnell B, Circo E. Childhood abuse and mental health indicators among ethnically diverse lesbian, gay, and bisexual adults. *J Consult Clin Psychol* 2010; **78**(4):459-68.
15. Bandelow B, Gutermann J, Peter H, Wedekind D. Early traumatic life events, parental attitudes, family history, and birth risk factors in patients with depressive disorder and healthy controls. *Int J Psychiatry Clin Pract* 2013; **17**(1):56-63.
16. Banou E, Hobfoll SE, Trochelman RD. Loss of resources as mediators between interpersonal trauma and traumatic and depressive symptoms among women with cancer. *J Health Psychol* 2009; **14**(2):200-14.

17. Bell IR, Baldwin CM, Russek LGS, Schwartz GER, Hardin EE. Early life stress, negative paternal relationships, and chemical intolerance in middle-aged women: Support for a neural sensitization model. *J Womens Health* 1998; **7**(9):1135-47.
18. Benedict MI, Paine LL, Paine LA, Brandt D, Stallings R. The association of childhood sexual abuse with depressive symptoms during pregnancy and selected pregnancy outcomes. *Child Abuse Negl* 1999; **23**(7):659-70.
19. Berenbaum H, Valera EM, Kerns JG. Psychological trauma and schizotypal symptoms. *Schizophr Bull* 2003; **29**(1):143-52.
20. Bernet CZ, Stein MB. Relationship of childhood maltreatment to the onset and course of major depression in adulthood. *Depress Anxiety* 1999; **9**(4):169-74.
21. Bifulco A, Bernazzani O, Moran PM, Ball C. Lifetime stressors and recurrent depression: Preliminary findings of the adult life phase interview (ALPHI). *Soc Psychiatry Psychiatr Epidemiol* 2000; **35**(6):264-75.
22. Bifulco A, Brown GW, Adler ZZ. Early sexual abuse and clinical depression in adult life. *Br J Psychiatry* 1991; **159**:115-22.
23. Bifulco A, Brown GW, Moran P, Ball C, Campbell C. Predicting depression in women: The role of past and present vulnerability. *Psychol Med* 1998; **28**(1):39-50.
24. Bifulco A, Moran PM, Baines R, Bunn A, Stanford K. Exploring psychological abuse in childhood: II. association with other abuse and adult clinical depression. *Bull Menninger Clin* 2002; **66**(3):241-58.
25. Blain LM, Muench F, Morgenstern J, Parsons JT. Exploring the role of child sexual abuse and posttraumatic stress disorder symptoms in gay and bisexual men reporting compulsive sexual behavior. *Child Abuse Negl* 2012; **36**(5):413-22.
26. Blumenthal DR, Neemann J, Murphy CM. Lifetime exposure to interparental physical and verbal aggression and symptom expression in college students. *Violence Vict* 1998; **13**(2):175-96.
27. Bockting CLH, Lok A, Visser I, Assies J, Koeter MW, Schene AH. Lower cortisol levels predict recurrence in remitted patients with recurrent depression: A 5.5 year prospective study. *Psychiatry Res* 2012; **200**(2-3):281-7.
28. Bohn D, Bernardy K, Wolfe F, Häuser W. The association among childhood maltreatment, somatic symptom intensity, depression, and somatoform dissociative symptoms in patients with fibromyalgia syndrome: A single-center cohort study. *J Trauma Dissociation* 2013; **14**(3):342-58.
29. Bonomi AE, Cannon EA, Anderson ML, Rivara FP, Thompson RS. Association between self-reported health and physical and/or sexual abuse experienced before age 18. *Child Abuse Negl* 2008; **32**(7):693-701.
30. Boynton-Jarrett R, Rosenberg L, Palmer JR, Boggs DA, Wise LA. Child and adolescent abuse in relation to obesity in adulthood: The black Women's health study. *Pediatr* 2012; **130**(2):245-53.
31. Bradley RG, Binder EB, Epstein MP, Tang Y, Nair HP, Liu W, et al. Influence of child abuse on adult depression: Moderation by the corticotropin-releasing hormone receptor gene. *Arch Gen Psychiatry* 2008; **65**(2):190-200.
32. Brand SR, Brennan PA, Newport DJ, Smith AK, Weiss TE, Stowe ZN. The impact of maternal childhood abuse on maternal and infant HPA axis function in the postpartum period. *Psychoneuroendocrinology* 2010; **35**(5):686-93.
33. Briere J, Woo R, McRae B, Foltz J, Sitzman R. Lifetime victimization history, demographics, and clinical status in female psychiatric emergency room patients. *J Nerv Ment Dis* 1997; **185**(2):95-101.

34. Brodsky BS, Cloitre M, Dulit RA. Relationship of dissociation to self-mutilation and childhood abuse in borderline personality disorder. *Am J Psychiatry* 1995; **152**(12):1788-92.
35. Brodsky BS, Oquendo MA, Ellis SP, Haas GL, Malone KM, Mann JJ. The relationship of childhood abuse to impulsivity and suicidal behavior in adults with major depression. *Am J Psychiatry* 2001; **158**(11):1871-7.
36. Brown GW, Ban M, Craig TKJ, Harris TO, Herbert J, Uher R. Serotonin transporter length polymorphism, childhood maltreatment, and chronic depression: A specific gene-environment interaction. *Depress Anxiety* 2013; **30**(1):5-13.
37. Brown GW, Craig TKJ, Harris TO. Parental maltreatment and proximal risk factors using the childhood experience of care & abuse (CECA) instrument: A life-course study of adult chronic depression--5. *J Affect Disord* 2008; **110**(3):222-33.
38. Brown GW, Harris TO, Hepworth CC, Robinson RR. Clinical and psychosocial origins of chronic depressive episodes: II: A patient enquiry. *Br J Psychiatry* 1994; **165**(4):457-65.
39. Brown GW, Moran P. Clinical and psychosocial origins of chronic depressive episodes: I. A community survey. *Br J Psychiatry* 1994; **165**(4):447-56.
40. Buist A. Childhood abuse, parenting and postpartum depression. *Aust N Z J Psychiatry* 1998; **32**(4):479-87.
41. Bulik CM, Sullivan PF, Rorty M. Childhood sexual abuse in women with bulimia. *J Clin Psychiatry* 1989; **50**(12):460-4.
42. Bushnell JA, Wells JE, Oakley-Browne M. Long-term effects of intrafamilial sexual abuse in childhood. *Acta Psychiatr Scand* 1992; **85**(2):136-42.
43. Caldwell JG, Shaver PR, Li C, Minzenberg MJ. Childhood maltreatment, adult attachment, and depression as predictors of parental self-efficacy in at-risk mothers. *J Agress Maltreat Trauma* 2011; **20**(6):595-616.
44. Carlson EB, Dalenberg CJ, Armstrong JG, Daniels JW, Loewenstein RJ, Roth D. Multivariate prediction of posttraumatic symptoms in psychiatric inpatients. *J Trauma Stress* 2001; **14**(3):549-67.
45. Carvalho JP, Trent LR, Hopko DR. The impact of decreased environmental reward in predicting depression severity: Support for behavioral theories of depression. *Psychopathology* 2011; **44**(4):242-52.
46. Collin-Vézina D, Cyr M, Pauzé R, McDuff P. The role of depression and dissociation in the link between childhood sexual abuse and later parental practices. *J Trauma Dissociation* 2005; **6**(1):71-97.
47. Comijs HC, van Exel E, van der Mast RE, Paauw A, Voshaar RO, Stek ML. Childhood abuse in late-life depression. *J Affect Disord* 2013; **147**(1-3):241-6.
48. Cong E, Li Y, Shao C, Chen J, Wu W, Shang X, et al. Childhood sexual abuse and the risk for recurrent major depression in Chinese women. *Psychol Med* 2012; **42**(2):409-17.
49. Cyranowski JM, Schott LL, Kravitz HM, Brown C, Thurston RC, Joffe H, et al. Psychosocial features associated with lifetime comorbidity of major depression and anxiety disorders among a community sample of mid-life women: The Swan Mental Health Study. *Depress Anxiety* 2012; **29**(12):1050-7.
50. Dennis MF, Flood AM, Reynolds V, Araujo G, Calncy CP, Barefoot JC, et al. Evaluation of lifetime trauma exposure and physical health in women with posttraumatic stress disorder or major depressive disorder. *Violence Against Women* 2009; **15**(5):618-27.
51. Deyessa N, Berhane Y, Alem A, Ellsberg M, Emmelin M, Hogberg U, et al. Intimate partner violence and depression among women in rural Ethiopia: A cross-sectional study. *Clin Pract Epidemiol Ment Health* 2009; **5**.

52. Douglas KM, Porter RJ. The effect of childhood trauma on pharmacological treatment response in depressed inpatients. *Psychiatry Res* 2012; **200**(2-3):1058-61.
53. Dunkley DM, Masheb RM, Grilo CM. Childhood maltreatment, depressive symptoms, and body dissatisfaction in patients with binge eating disorder: The mediating role of self-criticism. *Int J Eat Disorders* 2010; **43**(3):274-81.
54. Duran B, Malcoe LH, Sanders M, Waitzkin H, Skipper B, Yager J. Child maltreatment prevalence and mental disorders outcomes among American Indian women in primary care. *Child Abuse Negl* 2004; **28**(2):131-45.
55. Enns MW, Cox BJ. Psychosocial and clinical predictors of symptom persistence vs. remission in major depressive disorder. *Can J Psychiatry* 2005; **50**(12):769-77.
56. Ernst C, Angst J, Földényi M. The Zurich study, XVII: Sexual abuse in childhood: Frequency and relevance for adult morbidity data of a longitudinal epidemiological study. *Eur Arch Psychiatry Clin Neurosci* 1993; **242**(5):293-300.
57. Evren C, Cinar O, Evren B, Ulku M, Karabulut V, Umut G. The mediator roles of trait anxiety, hostility, and impulsivity in the association between childhood trauma and dissociation in male substance-dependent inpatients. *Compr Psychiatry* 2013; **54**(2):158-66.
58. Evren C, Kural S, Cakmak D. Clinical correlates of childhood abuse and neglect in substance dependents. *Addict Behav* 2006; **31**(3):475-85.
59. Fergusson DM, Boden JM, Horwood L. Exposure to childhood sexual and physical abuse and adjustment in early adulthood. *Child Abuse Negl* 2008; **32**(6):607-19.
60. Fergusson DM, McLeod GFH, Horwood LJ. Childhood sexual abuse and adult developmental outcomes: Findings from a 30-year longitudinal study in New Zealand. *Child Abuse Negl* 2013; **37**(9):664-74.
61. Figueroa EF, Silk KR, Huth A, Lohr NE. History of childhood sexual abuse and general psychopathology. *Compr Psychiatry* 1997; **38**(1):23-30.
62. Fisher HL, Cohen-Woods S, Hosang GM, Korszum A, Owen M, Craddock N, et al. Interaction between specific forms of childhood maltreatment and the serotonin transporter gene (5-HTT) in recurrent depressive disorder. *J Affect Disord* 2013; **145**(1):136-41.
63. Fisher HL, Craig TK, Fearon P, Morgan K, Dazzan P, Lappin J, et al. Reliability and comparability of psychosis patients' retrospective reports of childhood abuse. *Schizophr Bull* 2011; **37**(3):546-53.
64. Fogarty CT, Fredman L, Heeren TC, Liebschutz J. Synergistic effects of child abuse and intimate partner violence on depressive symptoms in women. *Prev Med* 2008; **46**(5):463-9.
65. Friedman ES, Davis LL, Zisook S, Wisniewski SR, Trivedi MH, Fava M, et al. Baseline depression severity as a predictor of single and combination antidepressant treatment outcome: Results from the CO-MED trial. *Eur Neuropsychopharmacol* 2012; **22**(3):183-99.
66. Friedman S, Smith L, Fogel D, Paradis C, Viswanathan R, Ackerman R, et al. The incidence and influence of early traumatic life events in patients with panic disorder: A comparison with other psychiatric outpatients. *J Anxiety Disord* 2002; **16**(3):259-72.
67. Gamble SA, Talbot NL, Conner KR, Tu X, Franus N, Beckman AM, et al. Concordance about childhood sexual abuse among depressed patients 50 and over and their family and friends. *Arch Suicide Res* 2007; **11**(4):321-6.
68. Garabedian MJ, Lain KY, Hansen WF, Garcia LS, Williams CM, Crofford LJ. Violence against women and postpartum depression. *J Womens Health* 2011; **20**(3):447-53.

69. Garnefski N, van Egmond M, Straatman M. The influence of early and recent life stress on severity of depression. *Acta Psychiatr Scand* 1990; **81**(3):295-301.
70. Gaudiano BA, Zimmerman M. The relationship between childhood trauma history and the psychotic subtype of major depression. *Acta Psychiatr Scand* 2010; **121**(6):462-70.
71. Gerke CK, Mazzeo SE, Kliewer W. The role of depression and dissociation in the relationship between childhood trauma and bulimic symptoms among ethnically diverse female undergraduates. *Child Abuse Negl* 2006; **30**(10):1161-72.
72. Gibb BE, Benas JS, Crossett SE, Uhrlass DJ. Emotional maltreatment and verbal victimization in childhood: Relation to adults' depressive cognitions and symptoms. *J Emotional Abuse* 2007; **7**(2):59-73.
73. Gibb BE, Butler AC, Beck JS. Childhood abuse, depression, and anxiety in adult psychiatric outpatients. *Depress Anxiety* 2003; **17**(4):226-8.
74. Gibbs BR, Rude SS. Overgeneral autobiographical memory as depression vulnerability. *Cognit Ther Res* 2004; **28**(4):511-26.
75. Gladstone GL, Parker GB, Mitchell PB, Malhi GS, Wilhelm K, Austin M. Implications of childhood trauma for depressed women: An analysis of pathways from childhood sexual abuse to deliberate self-harm and revictimization. *Am J Psychiatry* 2004; **161**(8):1417-25.
76. Gladstone G, Parker GB, Wilhelm K, Mitchell P, Austin M. Characteristics of depressed patients who report childhood sexual abuse. *Am J Psychiatry* 1999; **156**(3):431-7.
77. Goldney RD, dal Grande E, Taylor A. Population-attributable risk of childhood sexual abuse for symptoms of depression and suicidal ideation in adulthood. *Int J Psychiatry Clin Pract* 2009; **13**(4):285-91.
78. Goldsmith RE, Freyd JJ. Awareness for emotional abuse. *J Emotional Abuse* 2005; **5**(1):95-123.
79. Gonzalez A, Boyle MH, Kyu HH, Georgiades K, Duncan L, MacMillan HL. Childhood and family influences on depression, chronic physical conditions, and their comorbidity: findings from the Ontario Child Health Study. *J Psychiatr Res* 2012; **46**(11):1475-82.
80. Groleau P, Steiger H, Bruce K, Israel M, Sycz L, Ouellette AS, et al. Childhood emotional abuse and eating symptoms in bulimic disorders: An examination of possible mediating variables. *Int J Eat Disord* 2012; **45**(3):326-32.
81. Grote NK, Spieker SJ, Lohr M, Geibel SL, Swartz HA, Frank E, et al. Impact of childhood trauma on the outcomes of a perinatal depression trial. *Depress Anxiety* 2012; **29**(7):563-73.
82. Gunn JM, Gilchrist GP, Chondros P, Ramp M, Hegarty KL, Blashki GA, et al. Who is identified when screening for depression is undertaken in general practice? Baseline findings from the diagnosis, management and outcomes of depression in primary care (diamond) longitudinal study. *Med J Aust* 2008; **188**(12 Suppl.):119-25.
83. Haj-Yahia MM, de Zoysa P. Rates and psychological effects of exposure to family violence among Sri Lankan university students. *Child Abuse Negl* 2008; **32**(10):994-1002.
84. Handa M, Nukina H, Hosoi M, Kubo C. Childhood physical abuse in outpatients with psychosomatic symptoms. *Biopsychosoc Med* 2008; **2**.
85. Hankin BL. Childhood maltreatment and psychopathology: Prospective tests of attachment, cognitive vulnerability, and stress as mediating processes. *Cognit Ther Res* 2005; **29**(6):645-71.
86. Harkness KL, Bagby RM, Kennedy SH. Childhood maltreatment and differential treatment response and recurrence in adult major depressive disorder. *J Consult Clin Psychol* 2012; **80**(3):342-53.

87. Harkness KL, Monroe SM. Childhood adversity and the endogenous versus nonendogenous distinction in women with major depression. *Am J Psychiatry* 2002; **159**(3):387-93.
88. Hayden EP, Klein DN. Outcome of dysthymic disorder at 5-year follow-up: The effect of familial psychopathology, early adversity, personality, comorbidity, and chronic stress. *Am J Psychiatry* 2001; **158**(11):1864-70.
89. Heckman CJ, Westefeld JS. The relationship between traumatization and pain: What is the role of emotion? *J Fam Violence* 2006; **21**(1):63-73.
90. Hegarty K, Gunn J, Chondros P, Small R. Association between depression and abuse by partners of women attending general practice: Descriptive, cross sectional survey. *BMJ* 2004; **328**(7440):621-4.
91. Henny KD, Kidder DP, Stall R, Wolitski RJ. Physical and sexual abuse among homeless and unstably housed adults living with HIV: Prevalence and associated risks. *AIDS Behav* 2007; **11**(6):842-53.
92. Herrenkohl TI, Hong S, Klika JB, Herrenkohl RC, Russo MJ. Developmental impacts of child abuse and neglect related to adult mental health, substance use, and physical health. *J Fam Violence* 2013; **28**(2):191-9.
93. Hill J, Davis R, Byatt M, Burnside E, Rollinson L, Fear S. Childhood sexual abuse and affective symptoms in women: A general population study. *Psychol Med* 2000; **30**(6):1283-91.
94. Hobfoll SE, Bansal A, Schurg R, Young S, Pierce CA, Hobfoll I, et al. The impact of perceived child physical and sexual abuse history on Native American women's psychological well-being and AIDS risk. *J Consult Clin Psychol* 2002; **70**(1):252-7.
95. Holmes TR. A history of childhood abuse as a predictor variable: Implications for outcome research. *Res Soc Work Pract* 1995; **5**(3):297-308.
96. Hovens JG, Giltay EJ, Wiersma JE, Spinhoven P, Penninx BW, Zitman FG. Impact of childhood life events and trauma on the course of depressive and anxiety disorders. *Acta Psychiatr Scand* 2012; **126**(3):198-207.
97. Hudson Scholle SH, Rost KM, Golding JM. Physical abuse among depressed women. *J Gen Intern Med* 1998; **13**(9):607-13.
98. Hund AR, Espelage DL. Childhood emotional abuse and disordered eating among undergraduate females: Mediating influence of alexithymia and distress. *Child Abuse Negl* 2006; **30**(4):393-407.
99. Jeon H, Kang E, Lee E, Jeong EG, Jeon JR, Mischoulon D, et al. Childhood trauma and platelet brain-derived neurotrophic factor (BDNF) after a three month follow-up in patients with major depressive disorder. *J Psychiatr Res* 2012; **46**(7):966-72.
100. Johnson AL, Gibb BE, McGeary J. Reports of childhood physical abuse, 5-HTTLPR genotype, and women's attentional biases for angry faces. *Cognit Ther Res* 2010; **34**(4):380-7.
101. Johnstone JM, Carter JD, Luty SE, Mulder RT, Frampton CM, Joyce PR. Maternal care and paternal protection influence response to psychotherapy treatment for adult depression. *J Affect Disord* 2013; **149**(1-3):221-9.
102. Johnstone JM, Luty SE, Carter JD, Mulder RT, Frampton CMA, Joyce PR. Childhood neglect and abuse as predictors of antidepressant response in adult depression. *Depress Anxiety* 2009; **26**(8):711-7.
103. Joyce PR, McKenzie JM, Luty SE, Mulder RT, Carter JD, Sullican PF, et al. Temperament, childhood environment and psychopathology as risk factors for avoidant and borderline personality disorders. *Aust N Z J Psychiatry* 2003; **37**(6):756-64.

104. Klein DN, Arnow BA, Barkin JL, Dowling F, Kocsis JH, Leon AC, et al. Early adversity in chronic depression: Clinical correlates and response to pharmacotherapy. *Depress Anxiety* 2009; **26**(8):701-10.
105. Klein DN, Shankman SA, Rose S. Dysthymic disorder and double depression: Prediction of 10-year course trajectories and outcomes. *J Psychiatr Res* 2008; **42**(5):408-15.
106. Kong S, Bernstein K. Childhood trauma as a predictor of eating psychopathology and its mediating variables in patients with eating disorders. *J Clin Nurs* 2009; **18**(13):1897-907.
107. Koseva M, Schild S, Wilhelm-Schwenk R, Biewer W, Hauser W. Komorbide depressive Störungen als Mediator der Assoziation von Misshandlungen in Kindheit/Jugend und Fibromyalgiesyndrom [Comorbid depression mediates the association of childhood/adolescent maltreatment and fibromyalgia syndrome. A study with patients from different clinical settings]. *Schmerz* 2010; **24**(5):474-84.
108. Kounou KB, Bui E, Dassa KS, Hinton D, Fischer L, Djassoa G, et al. Childhood trauma, personality disorders symptoms and current major depressive disorder in Togo. *Soc Psychiatry Psychiatr Epidemiol* 2013; **48**(7):1095-103.
109. Kraaij V, de Wilde EJ. Negative life events and depressive symptoms in the elderly: A life span perspective. *Aging Ment Health* 2001; **5**(1):84-91.
110. Kuo JR, Goldin PR, Werner K, Heimberg RG, Gross JJ. Childhood trauma and current psychological functioning in adults with social anxiety disorder. *J Anxiety Disord* 2011; **25**(4):467-73.
111. Larsson S, Andreassen OA, Aas M, Røssberg JI, Mork E, Steen NE, et al. High prevalence of childhood trauma in patients with schizophrenia spectrum and affective disorder. *Compr Psychiatry* 2013; **54**(2):123-7.
112. Lenze SN, Xiong C, Sheline YI. Childhood adversity predicts earlier onset of major depression but not reduced hippocampal volume. *Psychiatr Res* 2008; **162**(1):39-49.
113. Lewis RJ, Griffin JL, Winstead BA, Morrow JA, Schubert CP. Psychological characteristics of women who do or do not report a history of sexual abuse. *J Prev Interv Community* 2003; **26**(1):49-65.
114. Libby AM, Orton HD, Novins DK, Beals J, Manson SM. Childhood physical and sexual abuse and subsequent depressive and anxiety disorders for two American Indian tribes. *Psychol Med* 2005; **35**(3):329-40.
115. Liu RT, Jager-Hyman S, Wagner CA, Alloy LB, Gibb BE. Number of childhood abuse perpetrators and the occurrence of depressive episodes in adulthood. *Child Abuse Negl* 2012; **36**(4):323-32.
116. Lu W, Mueser KT, Rosenberg SD, Jankowski MK. Correlates of adverse childhood experiences among adults with severe mood disorders. *Psychiatr Serv* 2008; **59**(9):1018-26.
117. Lutenbacher M. Perceptions of health status and the relationship with abuse history and mental health in low-income single mothers. *J Fam Nurs* 2000; **6**(4):320-40.
118. MacMillan HL, Fleming JE, Streiner DL, Lin E, Boyle MH, Jamieson E, et al. Childhood abuse and lifetime psychopathology in a community sample. *Am J Psychiatry* 2001; **158**(11):1878-83.
119. Mann JJ, Bortinger J, Oquendo MA, Currier D, Li S, Brent DA. Family history of suicidal behavior and mood disorders in probands with mood disorders. *Am J Psychiatry* 2005; **162**(9):1672-9.
120. Martsof DS. Childhood maltreatment and mental and physical health in Haitian adults. *J Nurs Scholarsh* 2004; **36**(4):293-9.

121. Mazzeo SE, Mitchell KS, Williams LJ. Anxiety, alexithymia, and depression as mediators of the association between childhood abuse and eating disordered behavior in African American and European American women. *Psychol Women Q* 2008; **32**(3):267-80.
122. Mchichi Alami K, Kadri N. Moroccan women with a history of child sexual abuse and its long-term repercussions: A population-based epidemiological study. *Arch Women Ment Health* 2004; **7**(4):237-42.
123. Moeller TP, Bachmann GA, Moeller JR. The combined effects of physical, sexual, and emotional abuse during childhood: Long-term health consequences for women. *Child Abuse Negl* 1993; **17**(5):623-40.
124. Molnar BE, Buka SL, Kessler RC. Child sexual abuse and subsequent psychopathology: Results from the national comorbidity survey. *Am J Public Health* 2001; **91**(5):753-60.
125. Moskva V, Farmer A, Swainson V, O'Leary J, Gunasinghe C, Owen M, et al. Interrelationship of childhood trauma, neuroticism, and depressive phenotype. *Depress Anxiety* 2007; **24**(3):163-8.
126. Mowlds W, Shannon C, McCusker CG, Meenagh C, Robinson D, Wilson A, et al. Autobiographical memory specificity, depression, and trauma in bipolar disorder. *Br J Clin Psychol* 2010; **49**(2):217-33.
127. Mullan E, Orrell M. Early life experience in elderly women with a history of depression: A pilot study using the brief parenting interview. *Ir J Psychol Med* 1996; **13**(1):18-20.
128. Mullen PE, Martin JL, Anderson JC, Romans SE, Herbison GP. Childhood sexual abuse and mental health in adult life. *Br J Psychiatry* 1993; **163**:721-32.
129. Mullen PE, Martin JL, Anderson JC, Romans SE, Herbison GP. The long-term impact of the physical, emotional, and sexual abuse of children: A community study. *Child Abuse Negl* 1996; **20**(1):7-21.
130. Nduna M, Jewkes RK, Dunkle KL, Shai NPJ, Colman I. Prevalence and factors associated with depressive symptoms among young women and men in the Eastern Cape Province, South Africa. *J Child Adolesc Ment Health* 2013; **25**(1):43-54.
131. Nemeroff CB, Heim CM, Thase ME, Klein DN, Rush AJ, Schatzberg AF, et al. Differential responses to psychotherapy versus pharmacotherapy in patients with chronic forms of major depression and childhood trauma. *Proc Natl Acad Sci U S A* 2003; **100**(24):14293-6.
132. Nicolaidis C, Curry M, McFarland BH, Gerrity MS. Violence, mental health, and physical symptoms in an academic internal medicine practice. *J Gen Intern Med* 2004; **19**(8):819-27.
133. Nicolaidis C, McFarland BH, Curry M, Gerrity MS. Differences in physical and mental health symptoms and mental health utilization associated with intimate-partner violence versus childhood abuse. *Psychosomatics* 2009; **50**(4):340-6.
134. Ogata SN, Silk KR, Goodrich S, Lohr NE, Westen D, Hill EM. Childhood sexual and physical abuse in adult patients with borderline personality disorder. *Am J Psychiatry* 1990; **147**(8):1008-13.
135. Oliver LE, Whiffen VE. Perceptions of parents and partners and men's depressive symptoms. *J Soc Pers Relat* 2003; **20**(5):621-35.
136. Oquendo M, Bongiovi-Garcia ME, Galfalvy H, Goldberg PH, Grunebaum MF, et al. Sex differences in clinical predictors of suicidal acts after major depression: A prospective study. *Am J Psychiatry* 2007; **164**(1):134-41.
137. Oquendo M, Brent DA, Birmaher B, Greenhill L, Kolko D, Stanley B, et al. Posttraumatic stress disorder comorbid with major depression: Factors mediating the association with suicidal behavior. *Am J Psychiatry* 2005; **162**(3):560-6.

138. Pandina G, Turkoz I, Bossie C. Impact of self-reported juvenile abuse on treatment outcome in patients with major depressive disorder. *J Affect Disord* 2013; **151**(1):384-91.
139. Peyrot WJ, Middeldorp CM, Jansen R, Smit JH, de Geus EJ, Hottenga JJ, et al. Strong effects of environmental factors on prevalence and course of major depressive disorder are not moderated by 5-HTTLPR polymorphisms in a large Dutch sample. *J Affect Disord* 2013; **146**(1):91-9.
140. Philippe FL, Laventure S, Beaulieu-Pelletier G, Lecours S, Leves N. Ego-resiliency as a mediator between childhood trauma and psychological symptoms. *J Soc Clin Psychol* 2011; **30**(6):583-98.
141. Plaza A, Garcia-Esteve L, Torres A, Ascaso C, Gelabert E, Luisa Imaz M, et al. Childhood physical abuse as a common risk factor for depression and thyroid dysfunction in the earlier postpartum. *Psychiatr Res* 2012; **200**(2-3):329-35.
142. Raes F, Hermans D. On the mediating role of subtypes of rumination in the relationship between childhood emotional abuse and depressed mood: Brooding versus reflection. *Depress Anxiety* 2008; **25**(12):1067-70.
143. Ramos BM, Carlson BE, McNutt L. Lifetime abuse, mental health, and African American women. *J Fam Violence* 2004; **19**(3):153-64.
144. Randolph ME, Reddy DM. Sexual functioning in women with chronic pelvic pain: The impact of depression, support, and abuse. *J Sex Res* 2006; **43**(1):38-45.
145. Ritchie K, Jausent I, Stewart R, Dupuy AM, Courtet P, Ancelin ML, et al. Association of adverse childhood environment and 5-HTTLPR genotype with late-life depression. *J Clin Psychiatry* 2009; **70**(9):1281-88.
146. Rohde P, Ichikawa L, Simon GE, Ludman EJ, Linde JA, Jeffery RW, et al. Associations of child sexual and physical abuse with obesity and depression in middle-aged women. *Child Abuse Negl* 2008; **32**(9):878-87.
147. Roosa MW, Reinholtz C, Angelini PJ. The relation of child sexual abuse and depression in young women: Comparisons across four ethnic groups. *J Abnorm Child Psychol* 1999; **27**(1):65-76.
148. Rorty M, Yager J, Rossotto E. Childhood sexual, physical, and psychological abuse and their relationship to comorbid psychopathology in bulimia nervosa. *Int J Eating Disorders* 1994; **16**(4):317-34.
149. Roy A, Roy M, Goldman D. Childhood trauma and depressive symptoms in type 1 diabetes. *J Clin Psychiatry* 2011; **72**(8):1049-53.
150. Sansone RA, Wiederman MW, Sansone LA. Adult somatic preoccupation and its relationship to childhood trauma. *Violence Vict* 2001; **16**(1):39-47.
151. Sar V, Akyüz G, Öztürk E, Alioğlu F. Dissociative depression among women in the community. *J Trauma Dissociation* 2013; **14**(4):423-38.
152. Saunders BE, Villepontoux LA, Lipovsky JA, Kilpatrick DG, Veronen LJ. Child sexual assault as a risk factor for mental disorders among women: A community survey. *J Interpers Violence* 1992; **7**(2):189-204.
153. Schumm JA, Stines LR, Hobfoll SE, Jackson AP. The double-barreled burden of child abuse and current stressful circumstances on adult women: The kindling effect of early traumatic experience. *J Trauma Stress* 2005; **18**(5):467-76.
154. Sedney MA, Brooks B. Factors associated with a history of childhood sexual experience in a nonclinical female population. *J Am Acad Child Psychiatry* 1984; **23**(2):215-8.
155. Seok JH, Lee KU, Kim W, Lee SH, Kang EH, Ham BJ, et al. Impact of early-life stress and resilience on patients with major depressive disorder. *Yonsei Med J* 2012; **53**(6):1093-8.

156. Silverman AB, Reinherz HZ, Giaconia RM. The long-term sequelae of child and adolescent abuse: A longitudinal community study. *Child Abuse Negl* 1996; **20**(8):709-23.
157. Spatz Widom C, DuMont K, Czaja SJ. A prospective investigation of major depressive disorder and comorbidity in abused and neglected children grown up. *Arch Gen Psychiatry* 2007; **64**(1):49-56.
158. Spertus IL, Yehuda R, Wong CM, Halligan SL, Seremetis SV. Childhood emotional abuse and neglect as predictors of psychological and physical symptoms in women presenting to a primary care practice. *Child Abuse Negl* 2003; **27**(11):1247-58.
159. Subica AM. Psychiatric and physical sequelae of childhood physical and sexual abuse and forced sexual trauma among individuals with serious mental illness. *J Trauma Stress* 2013; **26**(5):588-96.
160. Sun N, Li Y, Cai Y, Chen J, Shen Y, Sun J, et al. A comparison of melancholic and nonmelancholic recurrent major depression in Han Chinese women. *Depress Anxiety* 2012; **29**(1):4-9.
161. Sung SC, Wisniewski SR, Balasubramani GK, Zisook S, Kurian B, Warden D, et al. Does early-onset chronic or recurrent major depression impact outcomes with antidepressant medications? A CO-MED trial report. *Psychol Med* 2013; **43**(5):945-60.
162. Tanskanen A, Hintikka J, Honkalampi K, Haatainen K, Koivumaa-Honkanen H, Viinamäki H. Impact of multiple traumatic experiences on the persistence of depressive symptoms - a population-based study. *Nord J Psychiatry* 2004; **58**(6):459-64.
163. Tietjen GE, Brandes JL, Peterlin B, Eloff A, Dafer RM, Stein MR, et al. Childhood maltreatment and migraine (Part I). Prevalence and adult revictimization: A multicenter headache clinic survey. *Headache* 2010; **50**(1):20-31.
164. van Harmelen A, de Jong PJ, Glashouwer KA, Spinhoven P, Penninx BWJH, Elzinga BM. Child abuse and negative explicit and automatic self-associations: The cognitive scars of emotional maltreatment. *Behav Res Ther* 2010; **48**(6):486-94.
165. Wainwright NJ, Surtees PG. Childhood adversity, gender and depression over the life-course. *J Affect Disord* 2002; **72**(1):33-44.
166. Walker EA, Katon WJ, Hansom J, Harrop-Griffiths J, Holm L, Jones ML, et al. Medical and psychiatric symptoms in women with childhood sexual abuse. *Psychosom Med* 1992; **54**(6):658-64.
167. Walton G, Co SJ, Milloy MJ, Qi J, Kerr T, Wood E. High prevalence of childhood emotional, physical and sexual trauma among a Canadian cohort of HIV-seropositive illicit drug users. *AIDS Care* 2011; **23**(6):714-21.
168. Weaver TL, Clum GA. Early family environments and traumatic experiences associated with borderline personality disorder. *J Consult Clin Psychol* 1993; **61**(6):1068-75.
169. Weber K, Rockstroh B, Borgelt J, Awiszus B, Popov T, Hoffman K, et al. Stress load during childhood affects psychopathology in psychiatric patients. *BMC Psychiatry* 2008; **8**.
170. Weissmann Wind T, Silvern LE. Type and extent of child abuse as predictors of adult functioning. *J Fam Violence* 1992; **7**(4):261-281.
171. Wessel I, Meeren M, Peeters F, Arntz A, Merckelbach H. Correlates of autobiographical memory specificity: The role of depression, anxiety and childhood trauma. *Behav Res Ther* 2001; **39**(4):409-21.
172. Wexler BE, Lyons L, Lyons H, Mazure CM. Physical and sexual abuse during childhood and development of psychiatric illnesses during adulthood. *J Nerv Ment Dis* 1997; **185**(8):522-4.
173. Whiffen VE, Judd ME, Aube JA. Intimate relationships moderate the association between childhood sexual abuse and depression. *J Interpers Violence* 1999; **14**(9):940-54.

174. Wiersma JE, Hovens JM, van Oppen P, Giltay EJ, van Schaik DJ, Beekman AT, et al. The importance of childhood trauma and childhood life events for chronicity of depression in adults. *J Clin Psychiatry* 2009; **70**(7):983-9.
175. Wilhelm K, Roy K, Mitchell P, Brownhill S, Parker G. Gender differences in depression risk and coping factors in a clinical sample. *Acta Psychiatr Scand* 2002; **106**(1):45-53.
176. Wilsnack SC, Vogeltanz ND, Klassen AD, Harris TR. Childhood sexual abuse and women's substance abuse: National survey findings. *J Stud Alcohol* 1997; **58**(3):264-71.
177. Windle M, Windle RC, Scheidt DM, Miller GB. Physical and sexual abuse and associated mental disorders among alcoholic inpatients. *Am J Psychiatry* 1995; **152**(9):1322-8.
178. Wise LA, Zierler S, Krieger N, Harlow BL. Adult onset of major depressive disorder in relation to early life violent victimisation: A case-control study. *Lancet* 2001; **358**(9285):881-7.
179. Young EA, Abelson JL, Curtis GC, Nesse RM. Childhood adversity and vulnerability to mood and anxiety disorders. *Depress Anxiety* 1997; **5**(2):66-72.
180. Zlotnick C, Mattia JI, Zimmerman M. Clinical features of survivors of sexual abuse with major depression. *Child Abuse Negl* 2001; **25**(3):357-67.
181. Zlotnick C, Ryan CE, Miller IW, Keitner GI. Childhood abuse and recovery from major depression. *Child Abuse Negl* 1995; **19**(12):1513-6.
182. Zlotnick C, Warshaw MG, Shea MT, Keller MB. Trauma and chronic depression among patients with anxiety disorders. *J Consult Clin Psychol* 1997; **65**(2):333-6.
183. Zobel I, Kech S, van Calker D, Dykieriek P, Berger M, Schneibel R, et al. Long-term effect of combined interpersonal psychotherapy and pharmacotherapy in a randomized trial of depressed patients. *Acta Psychiatr Scand* 2011; **123**(4):276-82.
184. Zuravin SJ, Fontanella C. The relationship between child sexual abuse and major depression among low-income women: A function of growing up experiences? *Child Maltreat* 1999; **4**(1):3-12.

Overview: which study was used in which analysis

Prevalence of abuse types in depressed individuals: 1, 4, 5, 6, 7, 8, 9, 10, 12, 13, 15, 17, 18, 20, 22, 23, 27, 29, 30, 31, 32, 33, 35, 36, 40, 41, 42, 47, 48, 49, 50, 54, 55, 56, 58, 59, 60, 61, 62, 63, 64, 65, 66, 67, 68, 69, 70, 73, 75, 76, 77, 81, 82, 84, 86, 87, 88, 90, 93, 95, 96, 97, 99, 100, 101, 102, 103, 105, 107, 108, 111, 112, 113, 116, 118, 119, 122, 123, 124, 125, 126, 127, 131, 132, 133, 134, 136, 137, 138, 141, 143, 145, 148, 149, 152, 156, 160, 161, 162, 163, 164, 166, 168, 172, 175, 176, 177, 178, 179, 180, 181, 182, 183, 184

Risk of depression: 1, 3, 4, 6, 8, 9, 10, 12, 15, 17, 18, 20, 21, 22, 23, 24, 29, 31, 33, 36, 37, 41, 45, 47, 48, 49, 50, 51, 54, 56, 58, 59, 60, 61, 62, 63, 64, 66, 68, 79, 90, 91, 92, 93, 96, 99, 100, 107, 108, 112, 113, 114, 118, 122, 123, 124, 128, 129, 130, 132, 133, 139, 141, 143, 145, 146, 148, 149, 152, 154, 156, 157, 159, 163, 164, 165, 166, 167, 172, 176, 177, 178, 184

Severity of depression: 2, 11, 12, 13, 14, 16, 19, 20, 25, 26, 28, 34, 43, 44, 45, 46, 53, 57, 58, 71, 72, 74, 78, 80, 83, 85, 89, 94, 98, 104, 106, 109, 110, 112, 115, 117, 120, 121, 135, 140, 142, 144, 147, 150, 151, 153, 155, 158, 169, 170, 171, 173

Risk of chronicity: 6, 9, 22, 37, 38, 39, 86, 139, 174, 181

Age at onset: 20, 35, 42, 75, 86, 119, 125, 157, 178, 181

Risk of non-response to depression treatment: 52, 55, 101, 102, 104, 138

Figure DS1 Prevalence of Childhood Sexual Abuse in Depressed Individuals

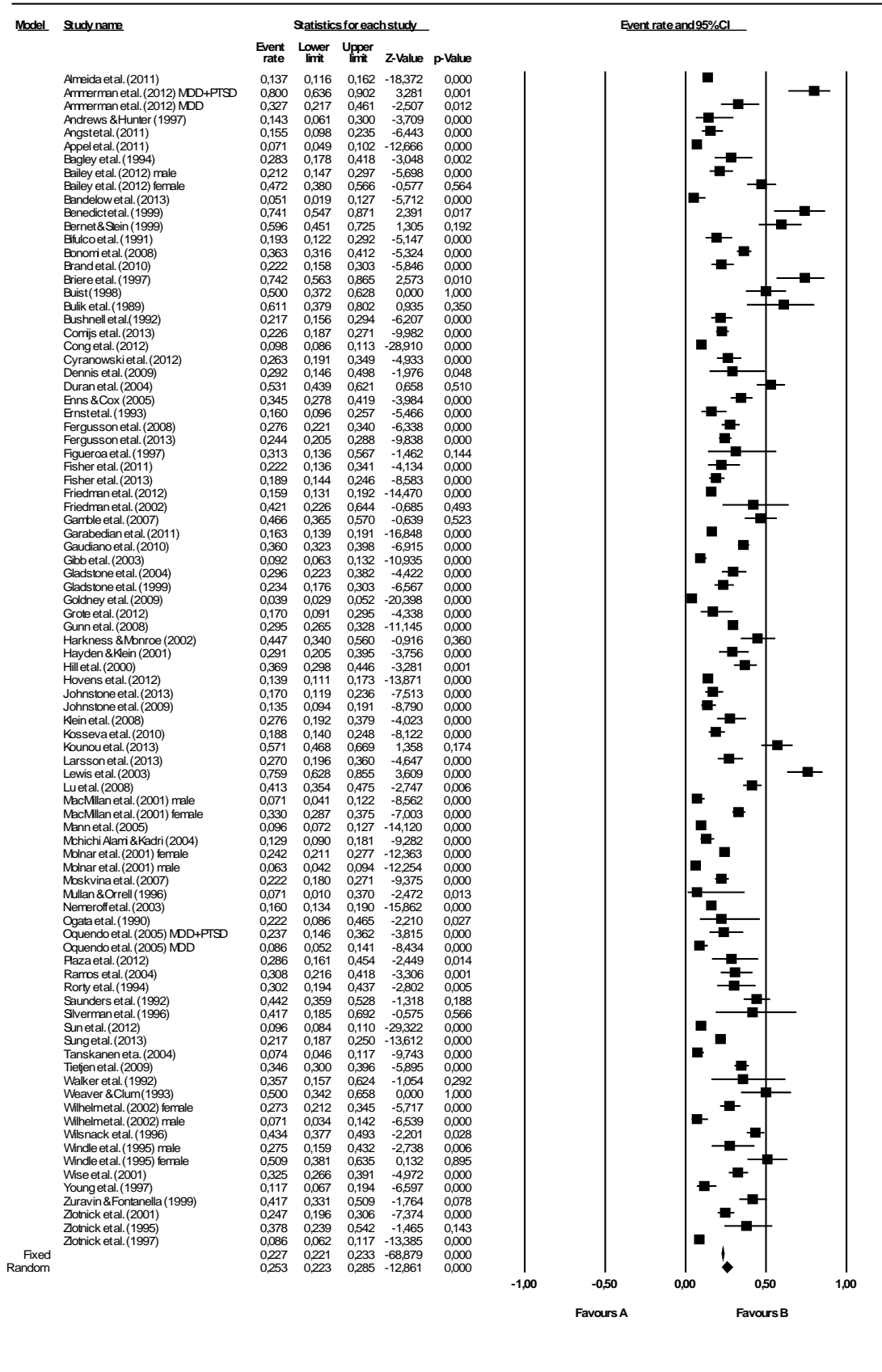


Figure DS2 Prevalence of Childhood Physical Abuse in Depressed Individuals

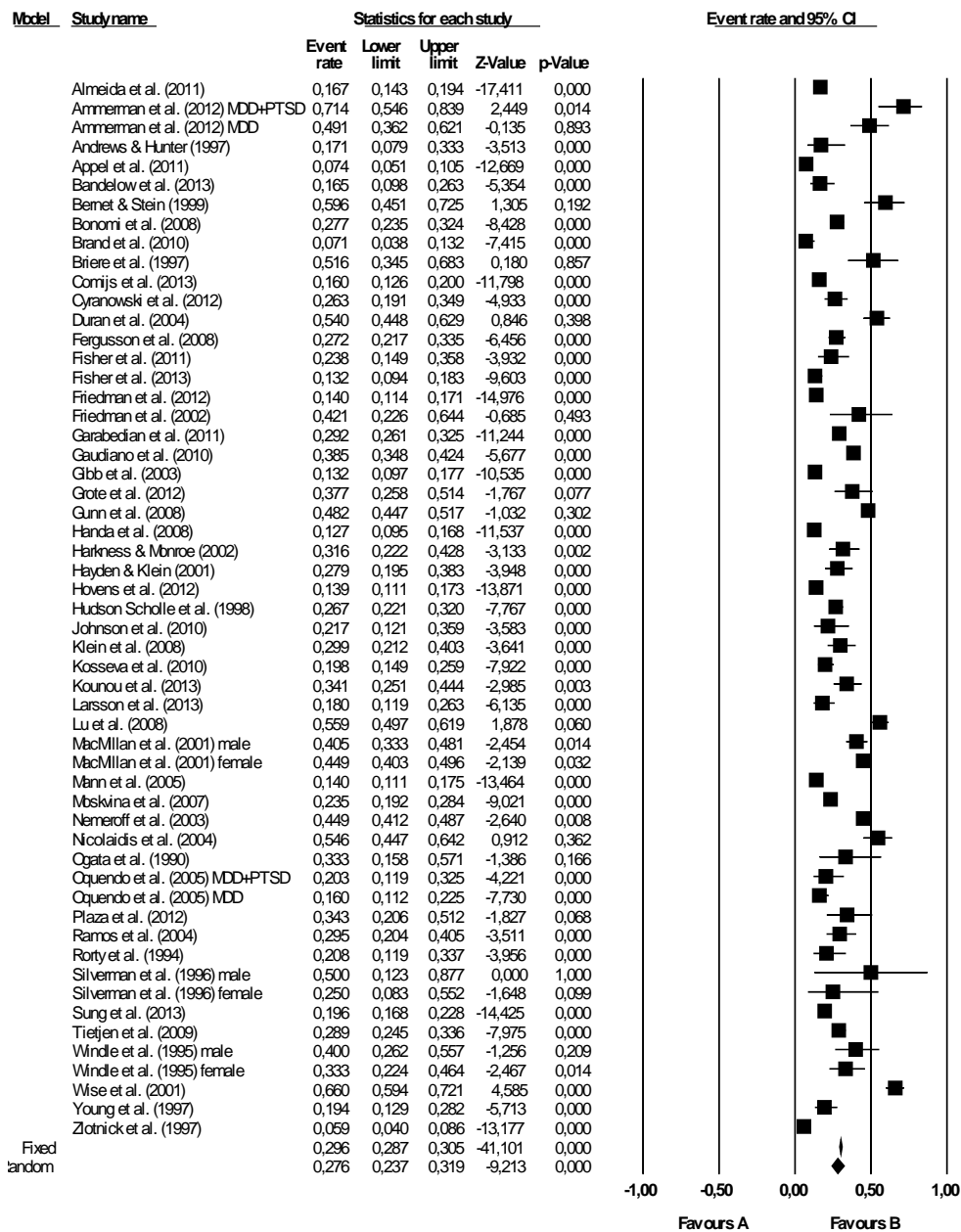


Figure DS3 Prevalence of Childhood Emotional Abuse in Depressed Individuals

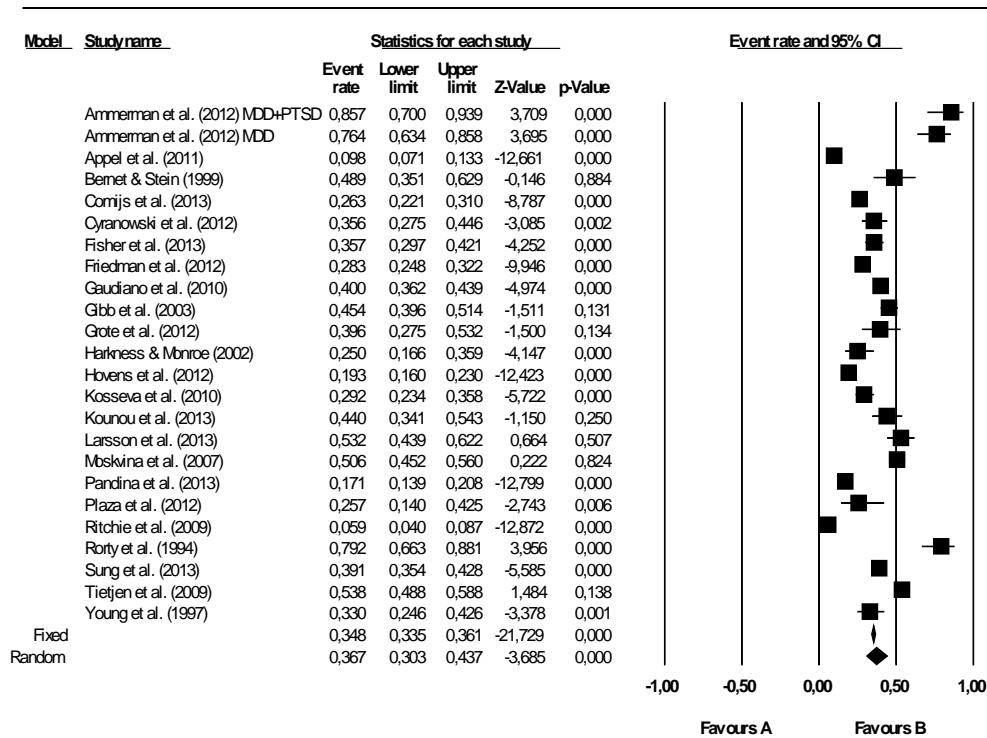


Figure DS4 Prevalence of Childhood Emotional Neglect in Depressed Individuals

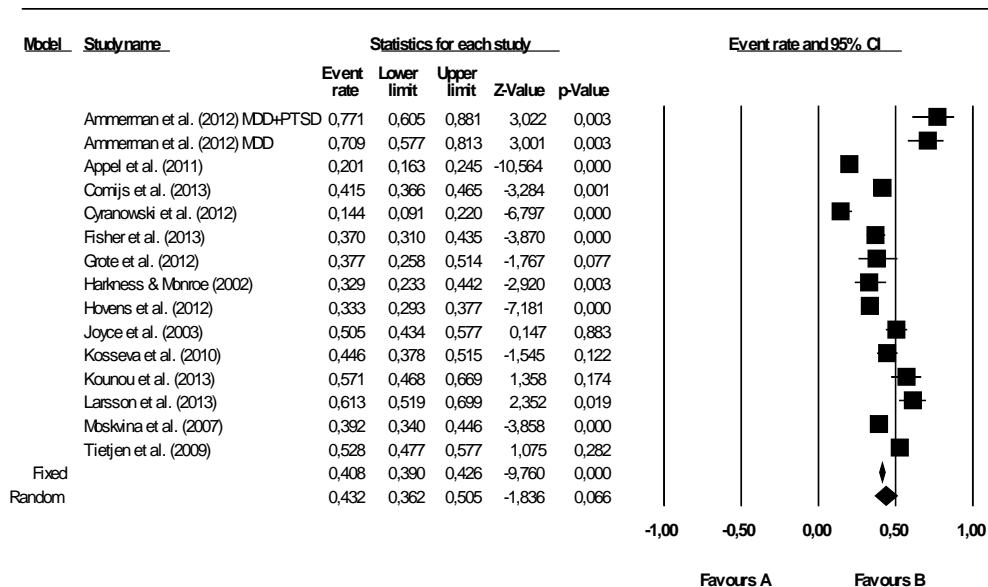


Figure DS5 Prevalence of Childhood Physical Neglect in Depressed Individuals

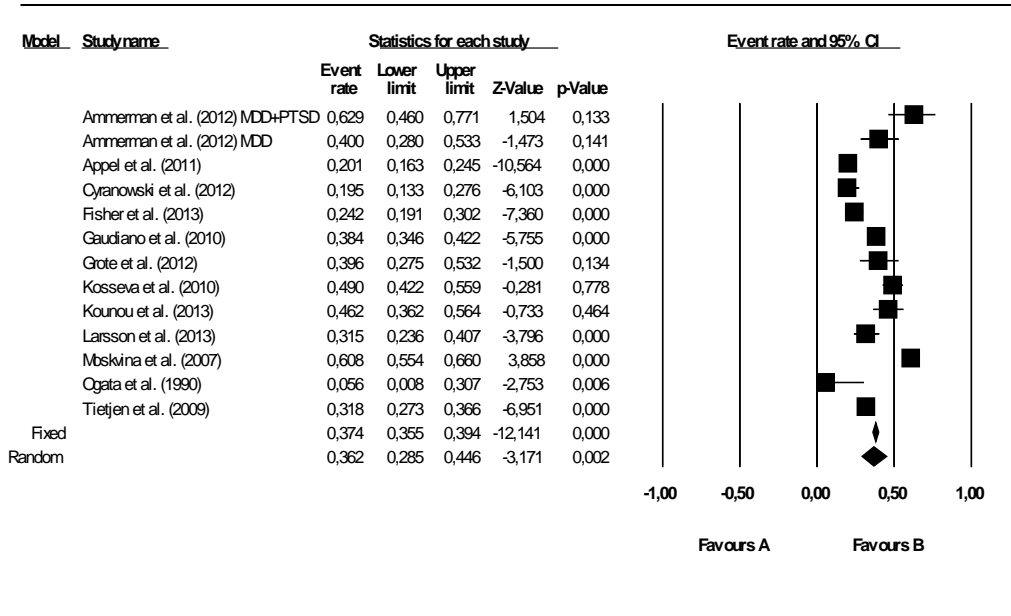


Figure DS6 Prevalence of any Childhood Abuse or Neglect in Depressed Individuals

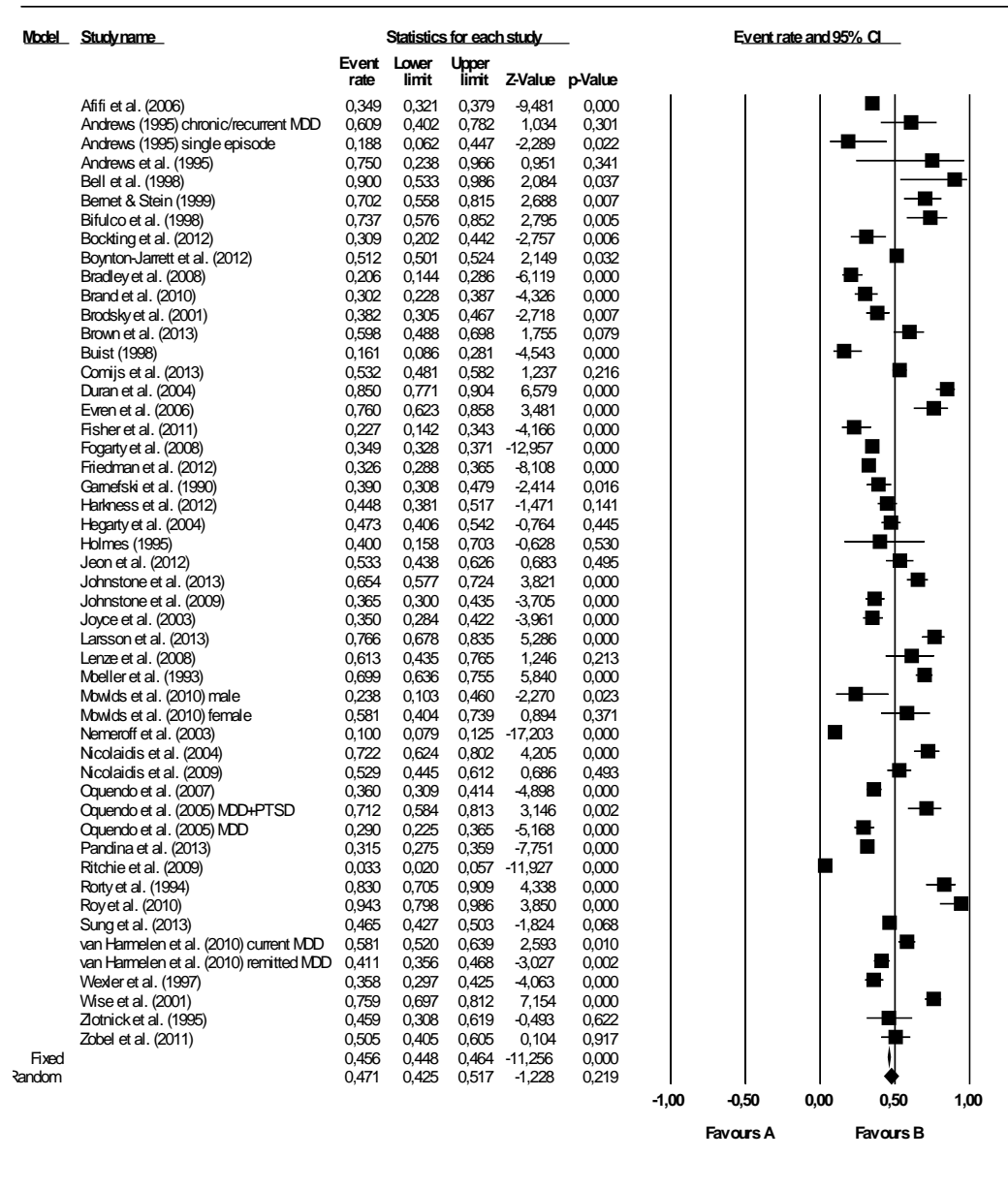


Figure DS7 Prevalence of Multiple Forms of Childhood Abuse or Neglect in Depressed Individuals

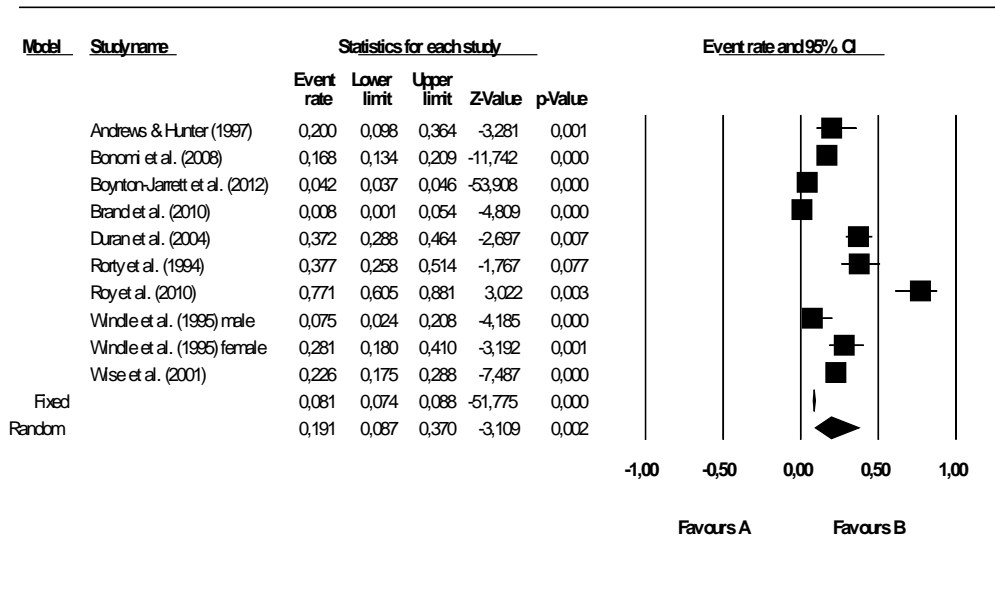


Figure DS8 Risk of Adult Depression in Individuals With Childhood Sexual Abuse

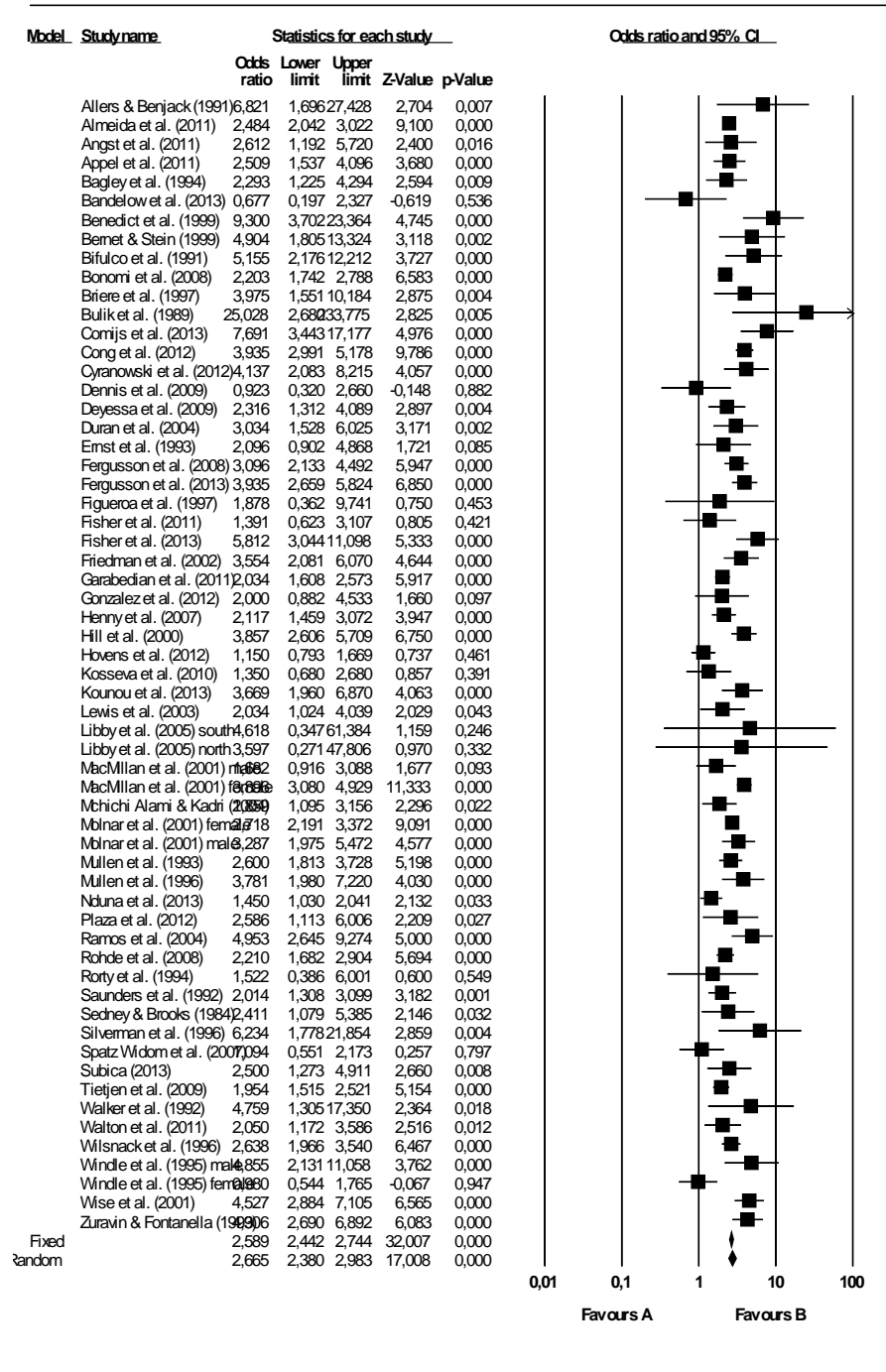


Figure DS9 Risk of Adult Depression in Individuals With Childhood Physical Abuse

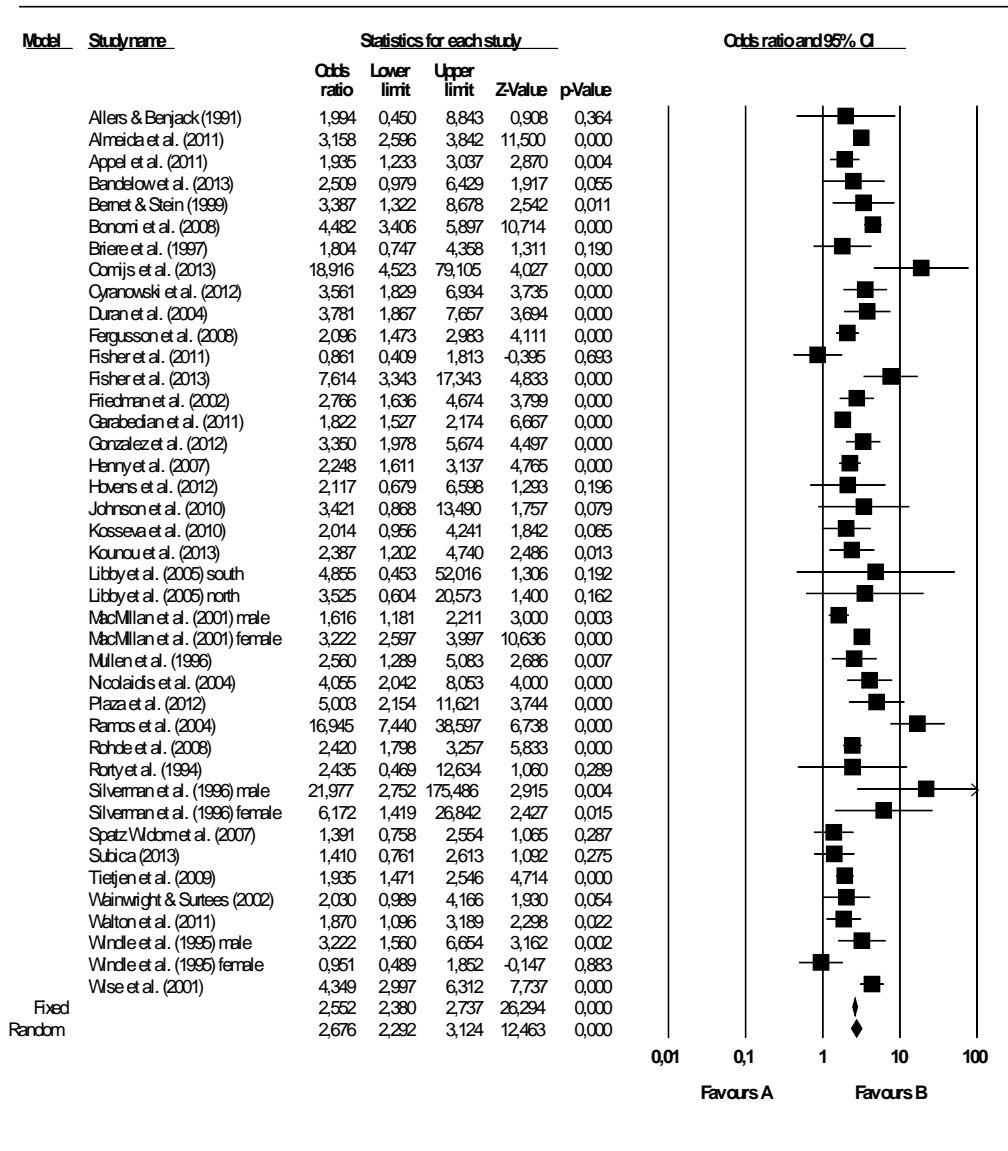


Figure DS10 Risk of Adult Depression in Individuals with Childhood Emotional Abuse

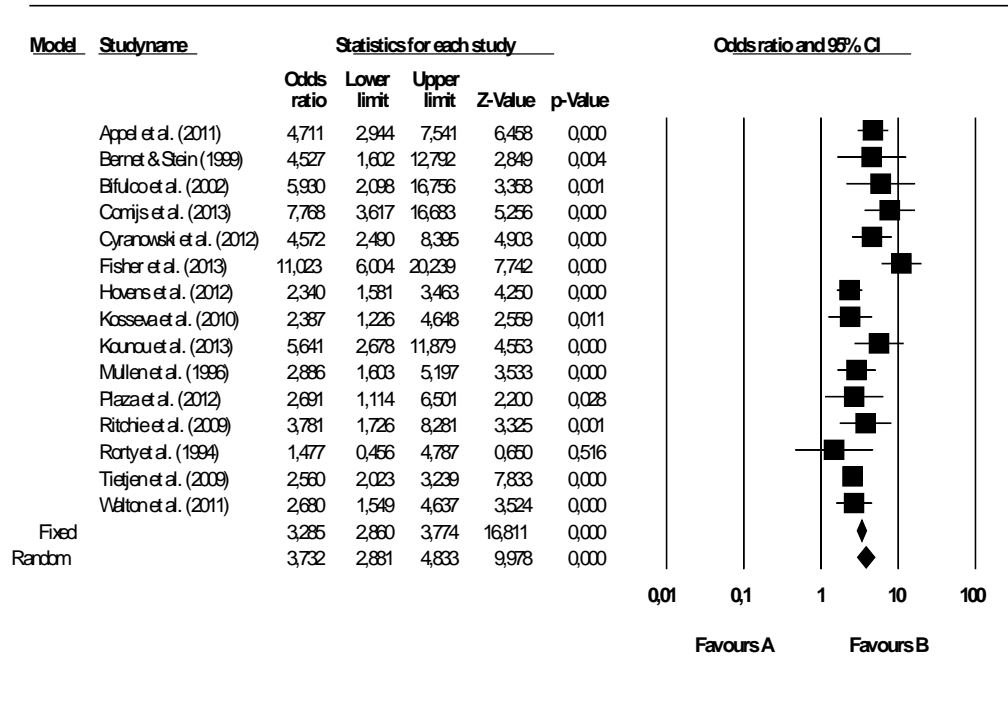


Figure DS11 Risk of Adult Depression in Individuals with Childhood Emotional Neglect

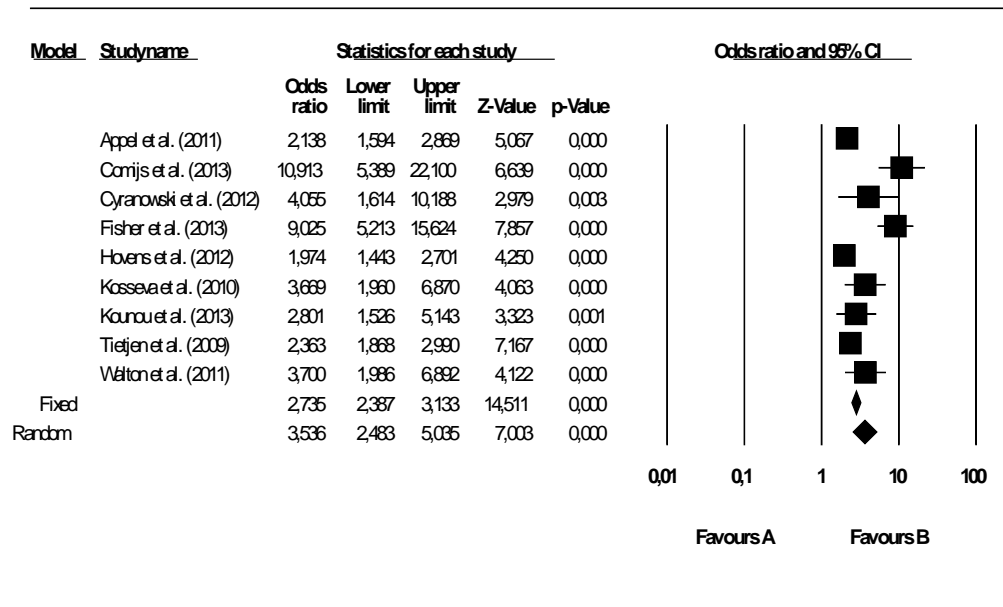


Figure DS12 Risk of Adult Depression in Individuals with Childhood Physical Neglect

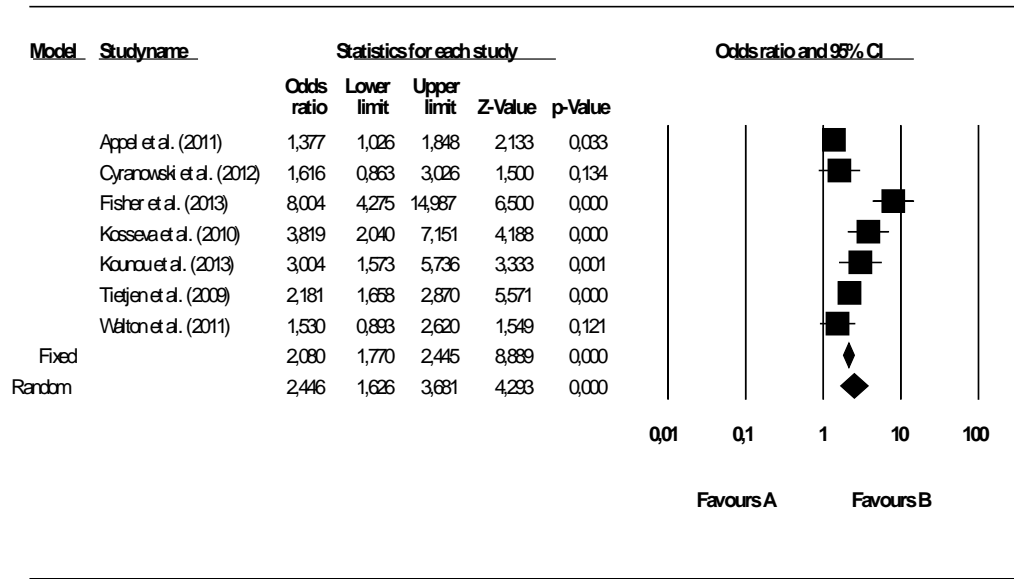


Figure DS13 Risk of Adult Depression in Individuals with any Childhood Abuse or Neglect

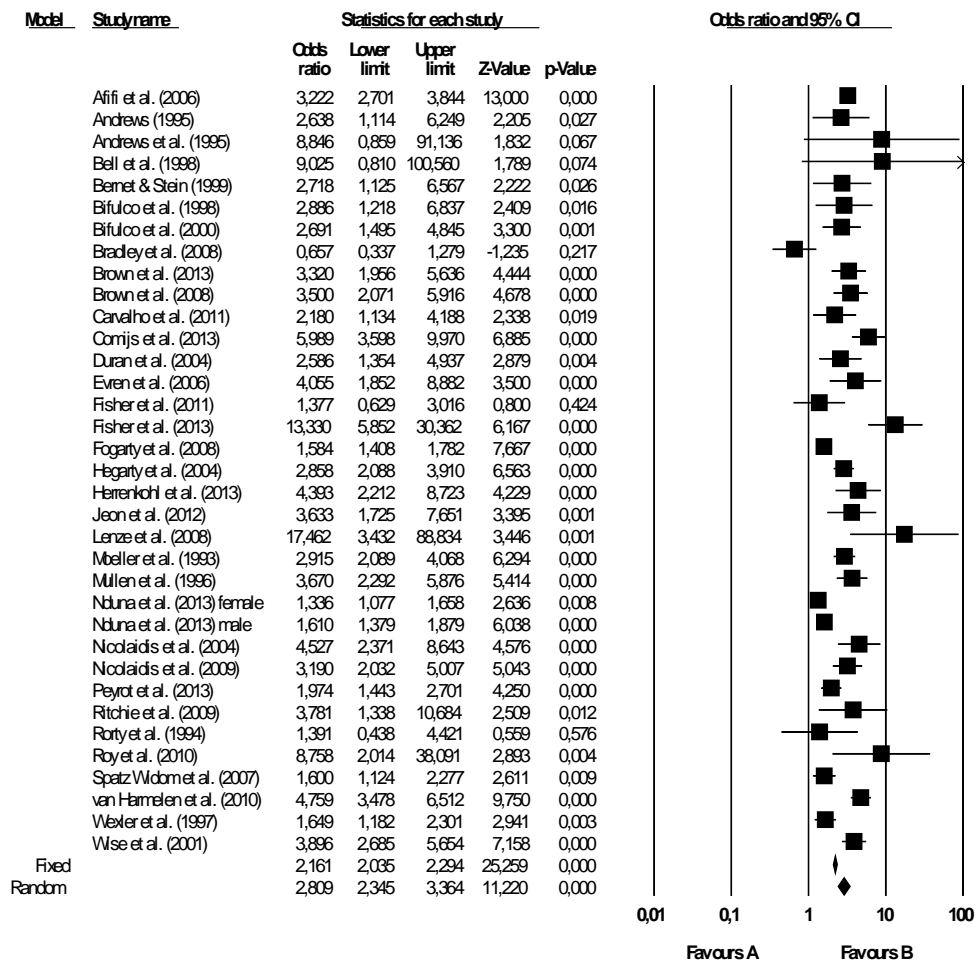


Figure DS14 Risk of Adult Depression in Individuals with Multiple Forms of Childhood Abuse or Neglect

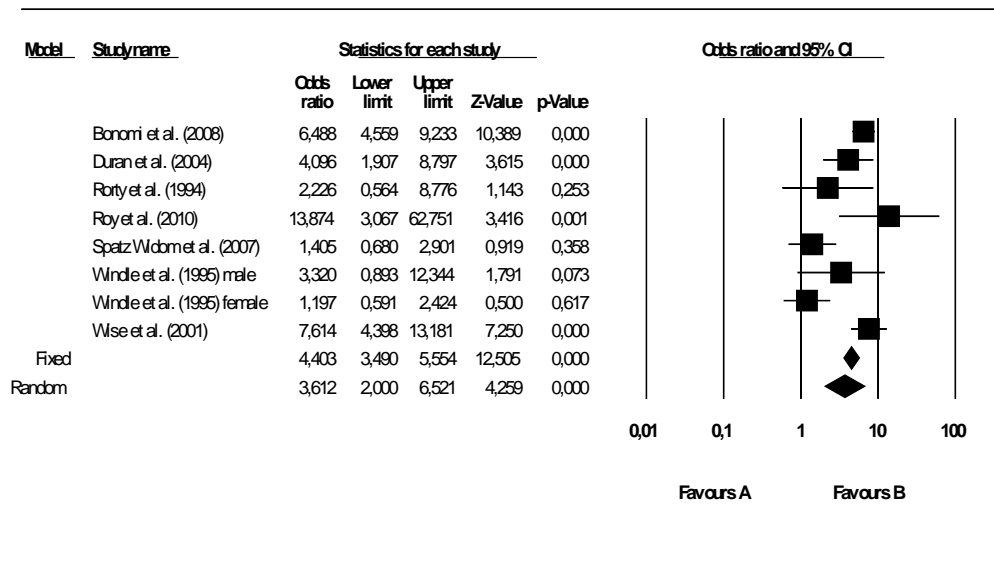


Figure DS15 Correlation of Childhood Sexual Abuse Severity and Adult Depression Severity

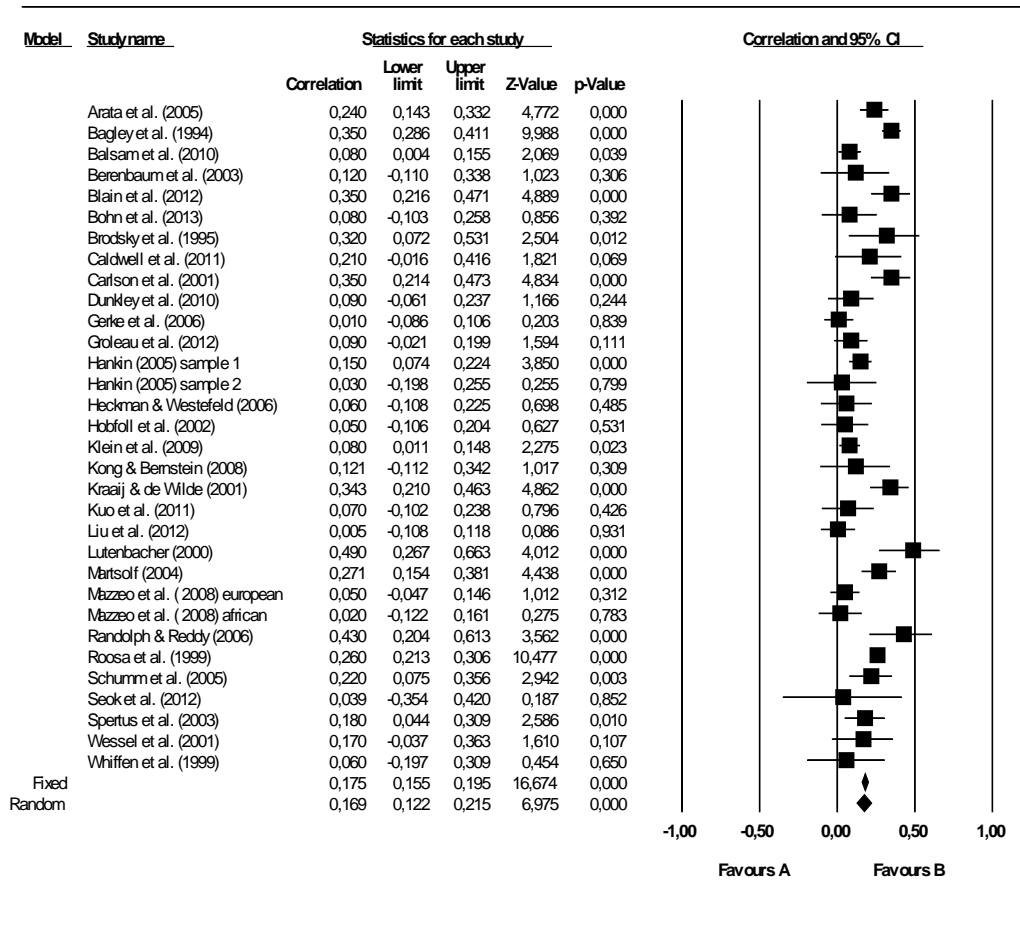


Figure DS16 Correlation of Childhood Physical Abuse Severity and Adult Depression Severity

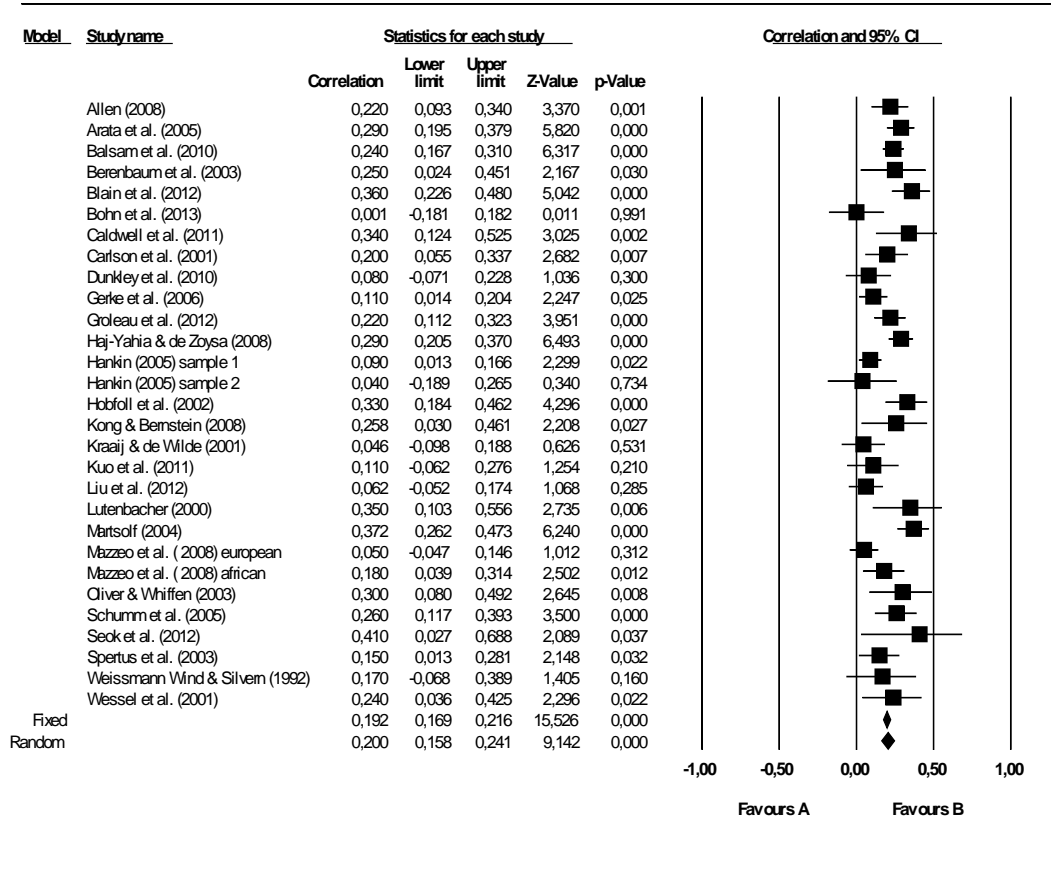


Figure DS17 Correlation of Childhood Emotional Abuse Severity and Adult Depression Severity

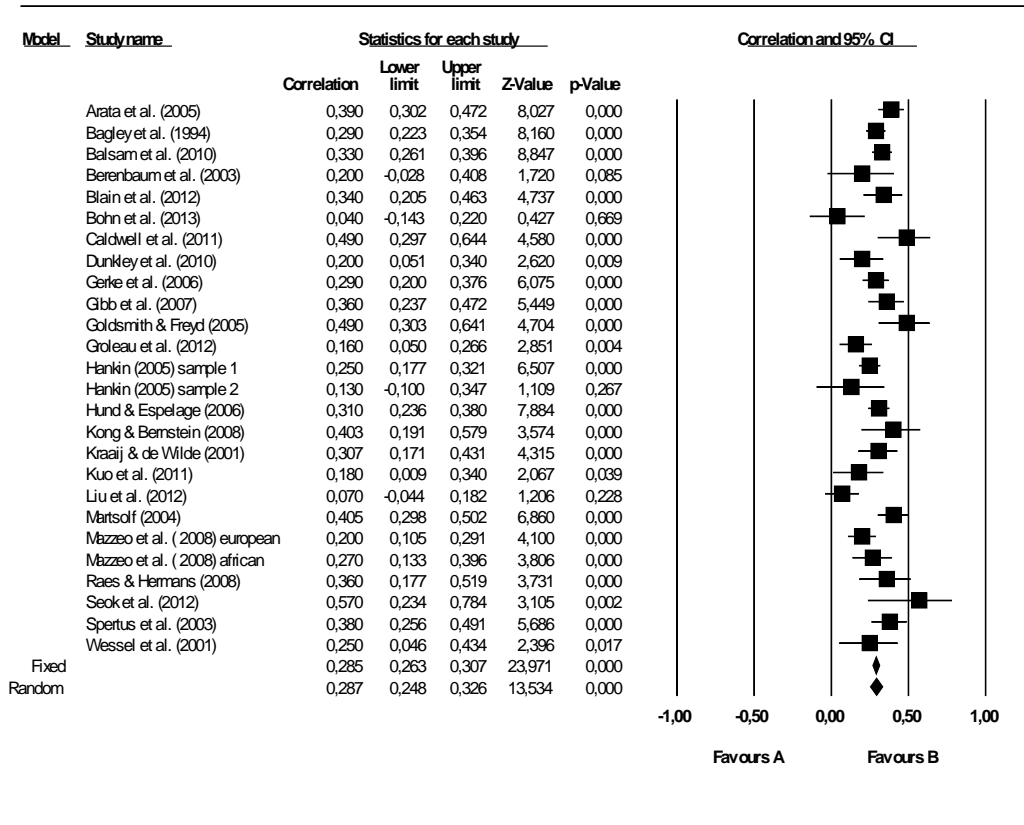


Figure DS18 Correlation of Childhood Emotional Neglect Severity and Adult Depression Severity

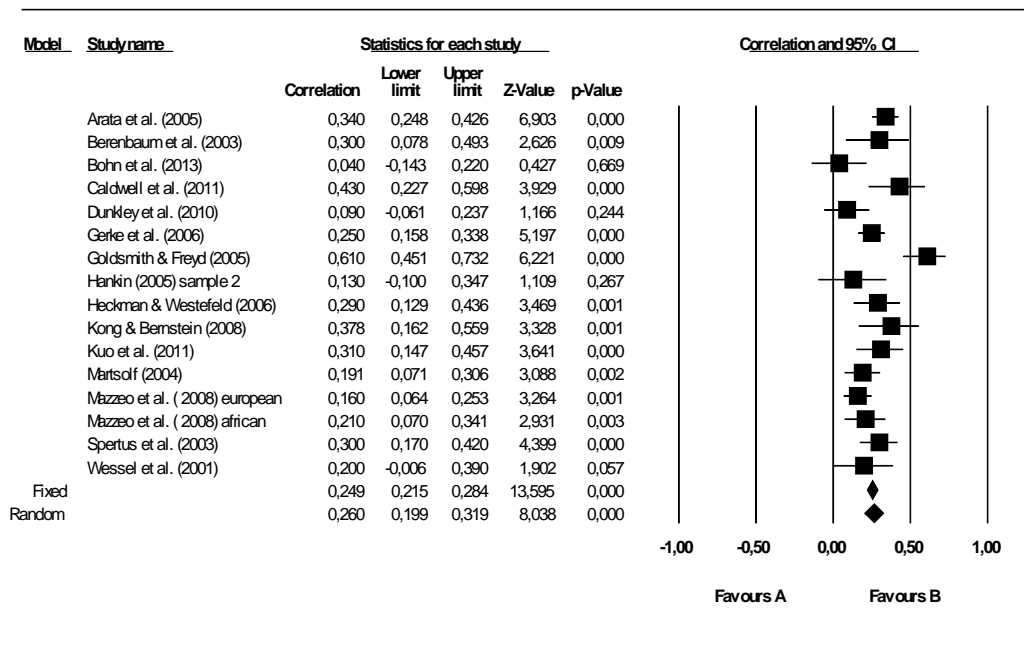


Figure DS19 Correlation of Childhood Physical Neglect Severity and Adult Depression Severity

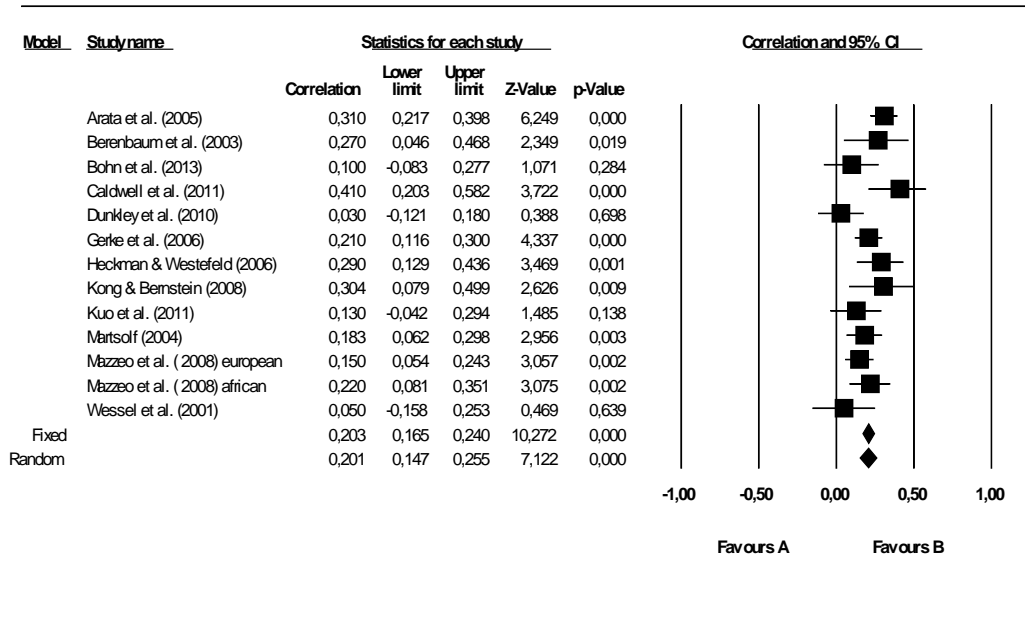


Figure DS20 Correlation of Severity of any Form of Childhood Abuse or Neglect and Adult Depression Severity

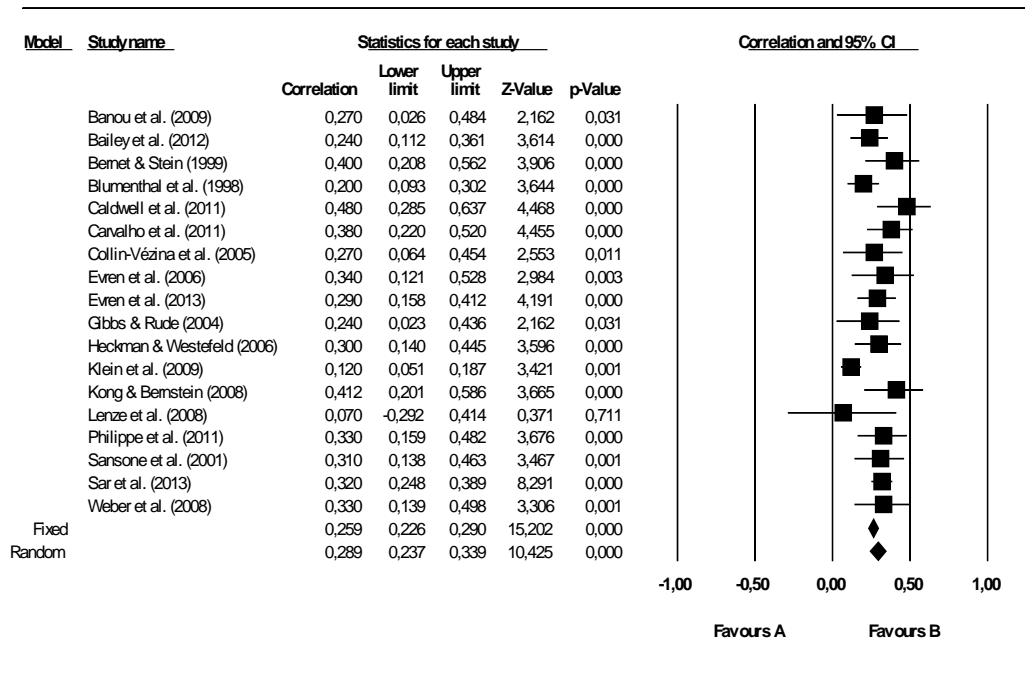


Figure DS21 Age of Depression Onset in Individuals With a Childhood Maltreatment History

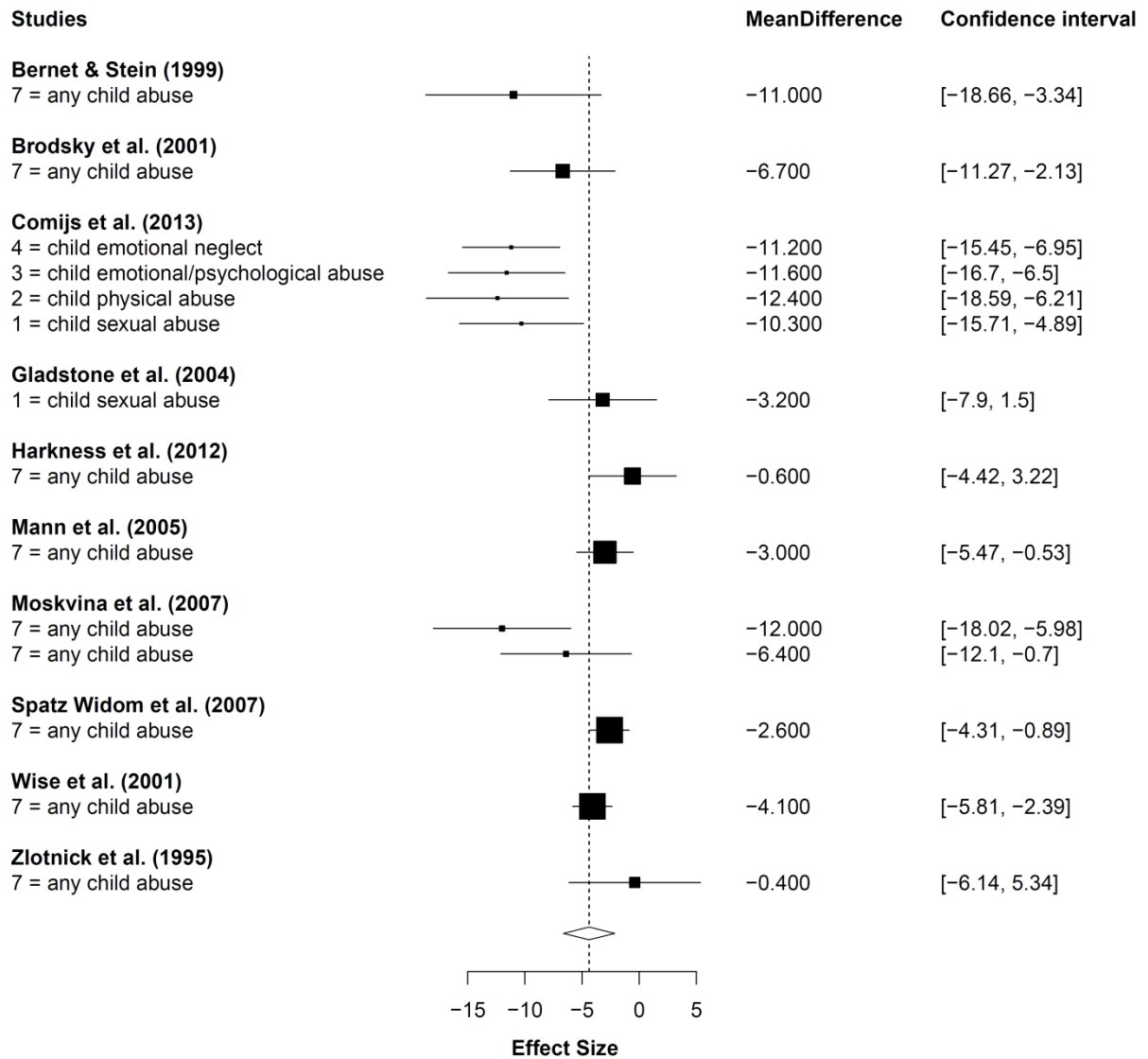


Figure DS22 Risk of Chronic Course in Depressed Individuals With a Childhood Maltreatment History

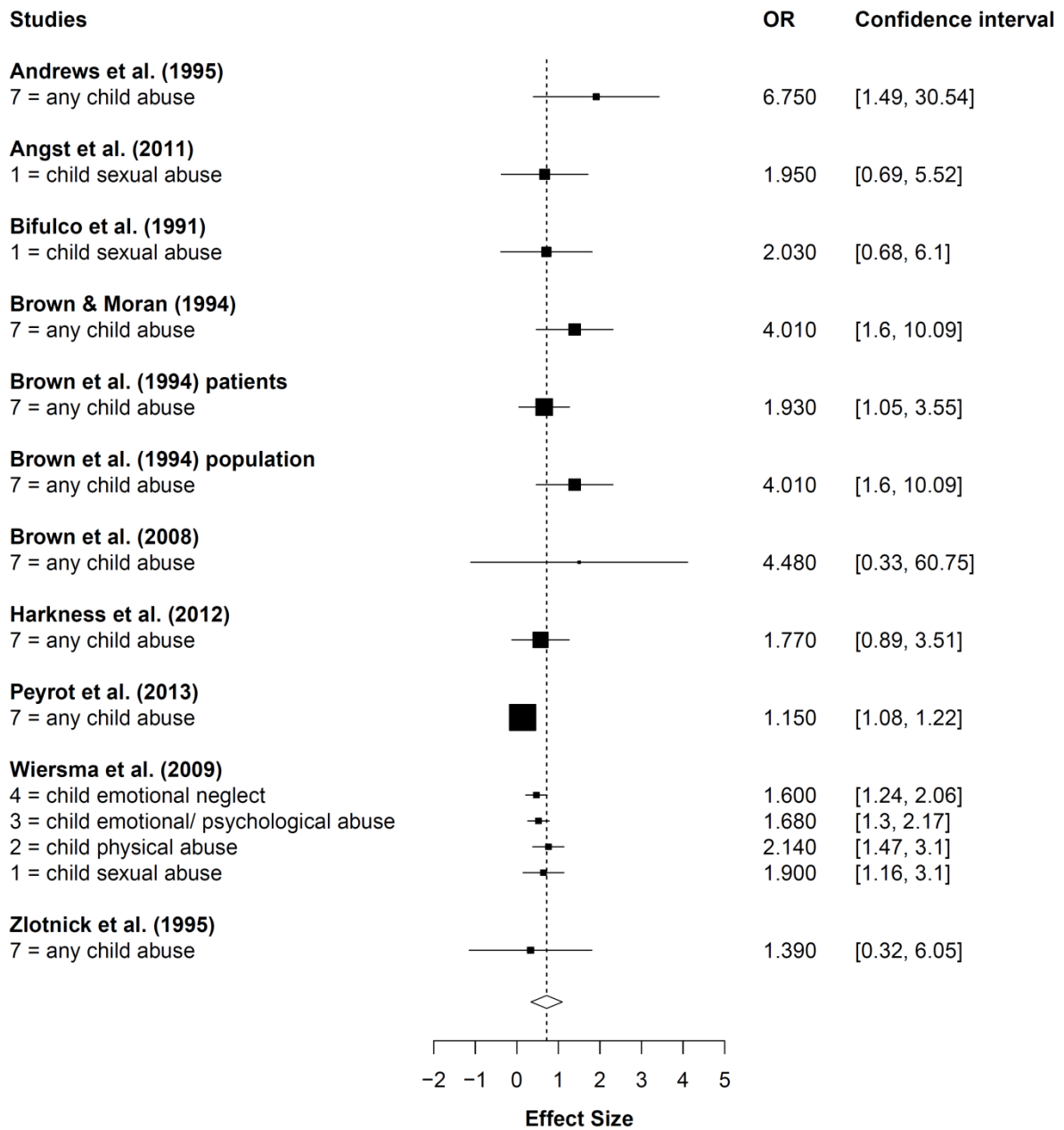


Figure DS23 Risk of Non-Response to Depression Treatment in Individuals with a Childhood Maltreatment History

