

Data supplement to Lally et al. Remission and recovery from first-episode psychosis in adults: systematic review and meta-analysis of long-term outcome studies. Br J Psychiatry doi: 10.1192/bjp.bp.117.201475

Table DS1 Characteristics of studies that examined remission as a longitudinal outcome

Author	Country	Diagnosis	Study design	Length of FU (years)	<i>n</i> at baseline	<i>n</i> at follow up	Definition of remission	Remission (%)
Aadamso et al 2011	Estonia	FES	Prospective	2	153	107	Adopted from Andreassen <i>et al</i> , 2005 and was defined he absence of psychotic symptoms (delusions, hallucinations, formal thought disorder or catatonia) for at least 1 month with the total score on the BPRS lower than 10 and the GAF score higher than 70 at the last interview	36.4
Addington&Addington 2008	Canada	FEP	Prospective	3	240	147	Adopted from Andreassen <i>et. al.</i> , 2005	36.7
Alaghband-Rad et al 2006	Iran	FEP	Prospective	2	54	49	Adopted from Andreassen <i>et. al.</i> , 2005	77.8
Austin et al 2013	Denmark	FEP	Prospective	10	496	304	Not stated	25
Benoit et al 2014	Canada	FEP	Prospective	1		70	A rating of no worse than "mild" (score=3) for all of the following SADS-C psychosis items: severity of delusions, severity of hallucinations, impaired understandability, derailment, illogical thinking, and bizarre behavior and 2) a rating of no worse than "moderate" (score=3) for the SANS global ratings of affective flattening, alogia, avolition-apathy, and anhedonia-asociality.	24.3
Boden et al 2009	Sweden	FES	Prospective	5	124	76	Adopted from Andreassen <i>et. al.</i> , 2005	52.6
Bromet et al 2005	USA	FEAP	Prospective	4	123	106	A period of at least 1 week without positive psychotic symptoms corresponding to PANSS score of <3 on positive items 1, 3, 5 or 6, or general subscale 9	83.7
Carlson et al 2000	USA	FEAP	Prospective	2		53	Adopted from Andreassen <i>et. al.</i> , 2005	74.4
Ceskova et al 2011	Czeck Republic	FES	Prospective	7	76	44	No rating of >3 (mild) on items P1, P2, P3, P5, and P6 of the PANSS; and a CGI Severity score ≤3 (mildly ill) for 4 consecutive weeks	52.3
Chang et al	Hong Kong	FES	Prospective	1	104	73	Adopted from Andreassen <i>et. al.</i> , 2005	56.2

2013								
Chang et al 2012	Hong Kong	FEP	Retrospective	3	700	539	Adopted from Andreassen <i>et. al.</i> , 2005	58.8
Clarke et al 2006	UK	FEP	Prospective	4	166	132	Adopted from Andreassen <i>et. al.</i> , 2005	57.6
Craig et al 2000	USA	FES	Prospective	2	349	335	Residual psychopathological symptoms of insignificant severity (PANSS item scores of ≤ 3) may be present but no evidence of significant effect on "functioning"	47.5
de Haan et al 2008	Netherland	FES	Prospective	5	110	104	Adopted from Andreassen <i>et. al.</i> , 2005; criteria for 9 months	37.5
Emsley et al 2006	South African	FEP	Prospective	2	57	28	Adopted from Andreassen <i>et. al.</i> , 2005	40
Emsley et al 2007	Multicentre	FEP	Prospective	3	559	462	Adopted from Andreassen <i>et. al.</i> , 2005 but duration component not applied	23.6
Evensen et al 2012	Norway	FEAP	Prospective	10	301	186	Not stated	45.7
Faber et al 2011	Netherland	FEP	Prospective	2	149	129	Complete psychopathological remission or minor psychopathological symptoms whether in, or not in treatment, at the end of the study period	52.4
Fraguas et al 2014	Spain	FEP	Prospective	2		47	Absence of positive symptoms for 12 weeks	53.2
Gasquet et al 2008	France	FES	Prospective	3	933	563	Adopted from Andreassen <i>et. al.</i> , 2005	60.6
Gignac et al 2015	Canada	FEAP	Prospective	4	101	81	Absence of psychotic symptoms plus presence of usual pre-morbid functioning for at least 30 days	98.8
Harrow et al 1997	USA	FES	Prospective	7.5		74	Absence of psychotic symptoms (delusions, hallucinations, formal thought disorder or catatonia) for at least 1 month with the total score on the BPRS lower than 10 and GAF score >70 at the last interview	29.7
Hassan & Taha 2011	Egypt	FES	Prospective	2	49	30	Not stated	51.4
Helgason 1990	Iceland	FES	Retrospective	21	107	81	Adopted from Andreassen <i>et. al.</i> , 2005 but duration component not stated	29
Henry et al 2010	Australia	FEP	Prospective	7	723	484	Not stated	36.8

Hill et al 2012	UK	FEP	Prospective	12	171	123	Patient did not meet DSM-IV criteria for a mood disorder for 8 weeks or longer	60.2
Jablensky et al 1992	Multicentre	FEP	Prospective	2	1,379	1,078	A score of ≤ 3 on the CGI-SCH maintained for 6 months or more (as adopted from Andreassen <i>et al</i> , 2005)	29.4
Johnson et al 2014	India	FES	Prospective	5	113	95	Absence of overt psychotic symptoms (operationalised as a score of 2 or 3 on Rating Scale 2 in the SCAN, where 0=absence, 1=symptom occurred but fleeting, 2=symptom definitely present, 3=symptom present more or less continuously) for a period of at least 6 months	68.4
Jordan et al 2014	Canada	FES	Retrospective	2	278	159	A score of ≤ 3 on all of the BPRS psychotic subscale items for at least 2 weeks	41.5
Kaleda 2009	Russia	FES	Prospective	16.8		278	Complete remission for 76-100% of the time	93.9
Kurihara et al 2011	Indonesia	FES	Prospective	17	59	43	Adopted from Andreassen <i>et. al.</i> , 2005	44.2
Lambert et al 2006	Germany	FES	Prospective	2	2,960	2,210	A CGI schizophrenia severity score of absent or mild (score ≤ 3) for 6 months or longer	47.2
Langeveld et al 2012	Norway	FEP	Prospective	2	225	187	Absence of psychotic symptoms for 1 week	77
Lieberman 1992	USA	FES	Prospective	5	120	70	Not stated	74
Lieberman et al 1996	USA	FEP	Prospective	5		70	Not stated	74
Madsen et al 1999	Denmark	FES	Retrospective	5	34	18	Total absence of all positive symptoms for one month	55.6
Mojtabai et al 2003	USA	FEP	Prospective	4	16	13	Scores < 3 for BPRS-E-Depression subscale items (i.e., anhedonia, appetite, care, depression, dysphoria, fatigue, guilt, indecisiveness and poor concentration, motor retardation, suicidal ideation or behaviours) and for BPRS-E-Psychosis subscale items (i.e., blunted affect, thought-broadcasting, -control or -withdrawal, conceptual disorganization, disorientation, hallucinations, mannerisms or posturing, suspiciousness, unusual thought content, or emotional withdrawal).	46

Morgan et al 2014	UK	FEP	Retrospective	10	532	387	Adopted from Andreassen <i>et. al.</i> , 2005	77
Naz et al 2007	USA	FEAP	Retrospective	4	87	87	Adopted from Andreassen <i>et. al.</i> , 2005	69
Norman et al 2014	Canada	FEP	Prospective	5	225	132	Not stated	83.6
Perkins et al 2004	USA	FES	Prospective	2	191	72	Scores of ≤ 2 on all 4 SAPS global subscale items (hallucinations, delusions, bizarre behaviour, thought disorder) and SANS global subscale items (affective flattening, alogia, apathy-avolition, asociality-anhedonia)	58.3
Rangaswamy et al 2012	India	FEP	Prospective	2	47	39	No rating >3 on any of the SADS-C and PD positive psychotic symptoms items, a CGI severity item rating of G3 (mild), a CGI improvement item rating of 2 (much improved) or better, and the maintenance of this level of improvement for 8 week	71.8
Rangaswamy et al 2012	India	FEP	Prospective	25	90	47	Not stated	68.1
Rund et al 2015	Norway	FEP	Prospective	10	301	261	CGI-S scores <3 for both positive and negative symptoms in the last 6 months of the 3-year follow-up	79.7
Schimmelmann et al 2012	Australia	FEP	Retrospective	1.5	115	99	No score higher than 3 over the previous month on any PANSS items at follow up	50
Shepherd et al 1989	UK	FEP	Prospective	5	121	107	No residual symptoms and return to premorbid functioning	22
Simonsen et al 2010	Denmark	FEP	Prospective	2	301	293	Absence of overt psychotic symptoms (operationalised as a score of 2 or 3 on Rating Scale 2 in the SCAN, where 0=absence, 1=symptom occurred but fleeting, 2=symptom definitely present, 3=symptom present more or less continuously) for a period of at least 6 months	50.1
Tang et al 2014	Hong Kong	FEP	Cross-sectional	13	153	96	Minimal to mild positive and negative symptoms on the global scores for SAPS and SANS for at least 6 months	47
Thara et al 2004	India	FES	Prospective	10	90	76	Not stated	48.7
Tohen et al 2012	USA	FEAP	Prospective	2	56	49	Adopted from Andreassen <i>et. al.</i> , 2005	58.3

Torgalsboen et al 2015	Norway	FES	Prospective	2	28	25	After the key episode a patient became symptom free and remained so throughout the follow up period	80
Ucok et al 2011	Turkey	FES	Prospective	2	153	96	Criteria for a mood episode were no longer met	59.6
van Os 1996	UK	FEP	Cross-sectional	1.5	191	166	Not stated	60
Vazquez-barquero et al 1999	Spain	FES	Prospective	3	86	76	No PANSS items >3 for 4 weeks	31.6
Verma et al 2012	Singapore	FEP	Retrospective	2	1,175	776	Adopted from Andreassen <i>et. al.</i> , 2005	54.1
Wade et al 2006	Australia	FEP	Prospective	1		103	After one or more episodes no residual symptoms and return to pre-morbid functioning over the first 2 years of follow up	100
Whitty et al 2008	UK	FES	Prospective	4	171	129	Adopted from Andreassen <i>et. al.</i> , 2005	43
Wiersma et al 1998	Netherland	FEP	Retrospective	15	82	63	Asymptomatic for 4 weeks or longer	26.7
Wiersma et al 2000	Multicentre	FES	Retrospective	15	496	349	Symptoms with score of <4 on any of the PANSS positive subscales items 1, 3, 5, or 6 and on general subscale item 9 for 1 week	40
Wunderink et al 2008	Netherland	FEP	Prospective	2	125	125	Not stated	52

Table DS2 Characteristics of studies that examined recovery as a longitudinal outcome

Author	Country	Diagnosis	Study design	length of FU (years)	<i>n</i> at baseline	<i>n</i> at follow up	Definition of recovery	Recovery %
Manchanda et al 2005	Canada	FEP	Cross-sectional	2	159	91	Rating of 0 on all subscales of SAPS by the end of 1 year and maintaining this rating at 2-year follow-up; no period of recurrence of positive symptoms between 1 and 2 years of follow up	42.1
Gignac et al 2015	Canada	FEAF	Prospective	4	101	81	A virtual absence of depressive and manic or hypomanic symptoms for 8 weeks	100
Harrow et al 2005	USA	FEP	Prospective	15	274	157	Absence of major symptoms, employed (part/full-time) and adequate psychosocial functioning for >1 year. Additionally, no psychiatric re-hospitalisation during the follow up year	42.7
Tohen et al 2000	USA	FEAP	Retrospective	2	219	199	A severity rating ≤ 3 for the DSM-IV A criterion for mania (range=1-7), with no B criterion rated greater than 3 and no two B criteria rated at 3. Patients with initial mixed episodes fulfilled recovery criteria for a manic and a depressive episode (no depression criterion >3, no more than three criteria scored at 3; in addition, CGI ratings had to be ≤ 2 ; maintained for at least 8 weeks	97.5
Zarate Jr et al 2000	USA	FEP	Prospective	2	30	28	No DSM-III-R 'A' criteria rated >2, and fewer than three criteria rated ≥ 2 rated on BPRS with duration of 8 weeks or longer	68.0
DeLisi et al 1998	USA	FES	Prospective	5		50	Illness severity score of 0-1 as measured with BPRS, normal functioning as measured with GAS and no psychopathology	10.0
Lieberman 1992	USA	FES	Prospective	5	120	70	Not stated	84.0
Lieberman et al 1996	USA	FES	Prospective	5		70	Not stated	84.0
Tohen et al 2012	USA	FEAP	Prospective	2	56	49	A severity rating ≤ 3 for the DSM-IV A criterion for mania (range=1-7), with no B criterion rated greater than 3 and no two B criteria rated at 3. Patients with initial mixed episodes fulfilled recovery criteria for a manic and a depressive episode (no depression criterion >3, no more than	97.5

							three criteria scored at 3; in addition, CGI ratings had to be ≤ 2 ; maintained for at least 8 weeks	
Bertelsen et al 2009	Denmark	FEP	Prospective	5	547	265	Symptomatic remission (as adopted from Andreassen <i>et al</i> , 2005), living independently, working and GAF(f) >59 score. Duration component not stated	18.0
Albert et al 2011	Denmark	FEP	Prospective	5	468	218	Remission of both negative and psychotic symptoms, no hospitalisations and not living in a supported housing facility, GAF(f) score >60 and employed (or studying) during the past 2 years.	15.7
Austin et al 2013	Denmark	FEP	Prospective	10	496	304	Remission of both negative and positive symptoms, no psychiatric admissions to hospital or living in supported accommodation for the past two years. Additionally, engaged in work or study and a GAF score >60 at the end of follow up	14.0
Thorup et al 2014	Denmark	FEP	Prospective	5	578	301	No psychotic or negative symptoms, GAF(f) score >59 , in job or education and living independently for the last two years	16.9
Lambert et al 2009	Germany	FES	Prospective	3	2,960	2,842	Simultaneous fulfilment of the following criteria over a period of at least 24 months: 1) Symptomatic recovery, defined as a CGI-SCH score ≤ 3 in the assessments of overall severity, positive, negative, and cognitive sub-scores and no hospitalization in the respective time period; 2) Functional recovery, defined as i) Occupational/vocational status, i.e. paid or unpaid full-/part-time employment, being an active student in university or head of household with employed partner, ii) Independent living, i.e. living alone, with partner, or with peers, and iii) Social relationships, i.e. having ≥ 2 social contacts during the last 4 weeks or having a spouse. The criterion for adequate subjective wellbeing was met if an SWN-K total score of ≥ 80 was achieved	8.1
Faber et al 2011	Netherland	FEP	Prospective	2	149	129	Symptomatic remission (as adopted from Andreassen <i>et al</i> , 2005 in the last 9 months of a 2-year follow up), functional remission (i.e., patient functions adequately in social roles with none or only a minimal disability (not allowing a score of 2 or 3 on any GSDS role) at 2 years of follow up all within the same time frame.	19.4

Wunderink et al 2008	Netherland	FES	Prospective	2	125	125	Symptomatic remission (as adopted from Andreassen <i>et al</i> , 2005) and GSDS role of functioning score were ≤ 1 , without the symptomatic and functional relapses during the observation period	19.2
Torgalsboen et al 2015	Norway	FEP	Prospective	2	28	25	Symptomatic remission (as adopted from Andreassen <i>et al</i> , 2005), plus at least part-time work or school, living independently and at least once weekly socialising with peers or otherwise involved in recreational activities that are age-appropriate and independent of professional supervision all during the last 2 years.	16.0
Evensen et al 2012	Norway	FEAP	Prospective	10	301	186	Symptom remission and 3 functional dimensions from the SCLFS (independent living, role functioning and social interactions) for 12 months	24.4
Mattsson et al 2008	Sweden	FEP	Prospective	5	175	71	Living a normal life with or without antipsychotic medication and with no need for daily support from professionals. Additionally, GAF score >60 for at least 6 months and in employment (part-/full time or studying).	72.2
Nyman&Jonsson 1983	Sweden	FEP	Prospective	5	110	95	Cured or improved without further relapses	8.0
Morgan et al 2014	UK	FEP	Retrospective	10	532	387	Sustained remission for at least 2 years	46.0
van Os 1996	UK	FEP	Cross-sectional	1.5	191	166	Sustained remission for at least 2 years	45.0
Mason et al 1996	UK	FES	Retrospective	13	67	58	Patient is alive, free of psychotic symptoms, no disability, not on treatment in the last 2-years of follow up	17.0
Chang et al 2012	Hong Kong	FES	Retrospective	3	700	539	Simultaneous fulfilment of the following criteria in the last 12 months of study period: (i) CGI-S scores < 3 for both positive and negative symptoms; (ii) no psychiatric admission; (iii) achieving functional remission.	17.4
Shrivastava et al 2010	India	FEP	Prospective	10	200	101	Good compliance ($<80\%$), not hospitalised for a minimum of two preceding years, GAF >80 , QOL score >80 , AIMS score < 2 , social function score >3 , independent living, education, and social burden (reverse scored)	60.0
Rangaswamy et al 2012	India	FES	Prospective	25	90	47	Patients did not have further episodes since the index episode and were functioning well	14.9
Srivastava et al 2009	India	FES	Prospective	10	200	101	Not stated	30.5

Thara et al 2004	India	FES	Prospective	10	90	76	Had not suffered any further psychotic symptoms after the initial admission	14.5
Verma et al 2012	Singapore	FEP	Retrospective	2	1,175	776	Patients who fulfilled the criteria for both symptomatic and functional remission	29.4
Kua et al 2003	Singapore	FES	Prospective	20	402	216	Patient not receiving treatment, well and working (duration not stated)	28.3
Salem et al 2009	United Arab Emirates	FES	Retrospective	6		69	Not stated	57.4
Kinoshita et al 2005	Japan	FEP	Prospective	15	97	52	No symptoms or signs of a psychotic episode for at least 4 weeks	32.7
Harrison et al 2001	Multicentre	FEP	Retrospective	15	1,633	1,005	Bleuler scale & GAF(d) > 60, excluding those with a recent (in the past 2 years) episode of treatment	49.2
Alvarez-Jimenez et al 2012	Australia	FEP	Prospective	7.5	307	209	Symptomatic remission (as adopted from Andreassen <i>et al</i> , 2005) with the exception of 6 month duration component and vocational functioning defined as independent living, and peer contact more than once per week. No duration was provided	26.0
Henry et al 2010	Australia	FEP	Prospective	7	723	484	The first item was social interactions with people outside of the family (QLS item 4; social activity score ≥ 4). The second was appropriate role function, defined as paid employment, attending school at least half-time, or, if a homemaker, performing that role adequately (QLS item 9; occupational role functioning score ≥ 4). The third was the ability to perform basic living tasks and to engage in certain activities (QLS item 19; commonplace activities score ≥ 4 ; eg, shopped for food, paid a bill, gone to a movie or play)	30.5

Table DS3 Meta analysis of remission in patients with first episode psychosis

Analysis	Meta-analysis				Heterogeneity			Publication bias	
	N studies	Pooled prevalence (%)	95% CI		Between group p-value	I ²	Q-value	p-value	Trim and fill 95% CI [N studies trimmed]
Remission main analysis	60	57.89	52.68	62.93		96.159	1536.28	<0.001	Unchanged
Remission worse case scenario	55	39.30	35.10	43.50		96.0	1371	<0.001	Unchanged
<i>Validly "Narrow"</i>					0.721				
No	14	54.79	43.27	65.83		96.61	383.08	<0.001	Unchanged
Yes	27	56.64	48.36	64.57		96.00	649.53	<0.001	Unchanged
Valid by symptomatic remission but not duration	17	63.01	52.43	72.47		96.21	422.18	<0.001	Unchanged
<i>Validity "Broad"</i>					0.9112				
No	29	56.74	49.14	64.03		95.83	671.34	<0.001	60.1 (51.3-68.4) [2]
Yes	29	58.80	51.38	65.84		96.08	713.98	<0.001	64.0 (56.5-70.9) [4]
<i>Duration criteria for remission</i>					0.414				
1-12 week	17	62.44	52.51	71.43		93.10	232.01	<0.001	Unchanged

3-6 months	27	56.71	48.86	64.24		96.57	757.66	<0.001	Unchanged
9 months, or longer	2	45.91	21.57	72.37		80.97	5.25	0.022	N/A
At the final assessment	6	67.38	50.21	80.88		97.93	241.22	<0.001	Unchanged
Not stated	6	45.59	30.05	62.03		90.50	52.63	<0.001	Unchanged
<i>Remission according to the RSWG criteria</i>					0.742				
No	35	58.60	51.78	65.11		95.48	752.54	<0.001	60.3 (52.8-67.7) [2]
Yes	25	56.87	48.93	64.47		96.35	656.85	<0.001	Unchanged
<i>Method measuring remission</i>					0.714				
Structured face-to-face assessment	37	60.09	53.27	66.54		95.80	858.09	<0.001	62.8 (55.4-69.7) [2]
Structured assessment supplemented with clinical notes and/or interviews with parents	11	58.74	46.55	69.95		96.31	270.74	<0.001	Unchanged
Clinical records	5	54.88	36.74	71.80		87.66	32.41	<0.001	Unchanged
Other	4	47.88	28.53	67.88		94.18	51.50	<0.001	Unchanged
<i>Study year group</i>					0.181				
Before 1976	2	29.51	12.53	55.02		0.00	0.00	0.966	N/A

1976-1997	18	59.33	50.08	67.97		93.21	250.26	<0.001	67.6 (56.2-77.2) [4]
1997-2004	27	58.66	51.29	65.67		96.76	802.91	<0.001	Unchanged
2005-2016	13	58.57	47.51	68.84		93.31	179.45	<0.001	Unchanged
<i>Study region</i>					0.002				
North American	17	65.19	56.62	72.88		91.70	192.72	<0.001	Unchanged
Europe	27	52.71	46.06	59.26		95.41	566.50	<0.001	Unchanged
Asia	10	66.35	55.81	75.48		93.53	139.16	<0.001	Unchanged
Africa	2	73.07	47.26	89.15		59.66	2.48	0.115	Unchanged
Multiregion	2	26.42	12.33	47.84		81.62	5.44	0.020	Unchanged
Australia	2	40.29	20.62	63.66		90.46	10.48	0.001	Unchanged
<i>Study type</i>					0.403				
Prospective longitudinal	48	59.12	53.33	64.68		96.06	1193.15	<0.001	Unchanged
Retrospective	7	46.73	32.35	61.68		91.05	67.06	<0.001	Unchanged
Combination of interviews and clinical notes	3	65.87	44.12	82.51		98.07	103.51	<0.001	Unchanged
Cross-sectional	2	53.71	27.65	77.89		77.09	4.36	0.037	Unchanged

<i>FU categories</i>					0.147				
1-2 years	24	63.12	55.23	70.36		92.88	322.91	<0.001	59.5 (53.0-65.6) [3]
2-6 years	20	57.17	48.27	65.64		96.41	529.44	<0.001	Unchanged
>6 years	16	50.81	41.20	60.36		96.56	435.78	<0.001	56.6 (45.1-67.5) [3]
<i>Settings</i>					0.690				
Adult psychiatric hospitals	35	59.95	52.87	66.64		96.20	895.89	<0.001	63.9 (54.9-72.0) [3]
Community & early intervention services	5	53.82	35.97	70.74		91.66	47.98	<0.001	Unchanged
In-/out-patient psychiatric services	20	55.70	46.22	64.77		95.91	464.78	<0.001	46.9 (38.6-55.4) [5]

sd, standard deviation; df, degrees of freedom; FEP, first episode psychosis; RSWG, Remission in Schizophrenia Working Group; FU, follow up period

Table DS4 Meta-analysis results of recovery in patients with first episode psychosis

Analysis	Meta-analysis				Heterogeneity			Publication bias	
	N studies	Pooled prevalence (%)	95% CI		Between group p-value	I ²	Q-value	p-value	Trim and fill 95% CI [N studies trimmed]
Recovery main analysis	35	37.90	30.03	46.45		97.66	1450.75	<0.001	39.9 (30.4-50.2) [1]-
Recovery in worst case	33	23.3	18.4	29.2		97.8	1270	<0.001	28.4 (22.1-35.8) [6]
<i>Validity criteria</i>					0.001				
Unclear criteria	11	39.52	25.52	55.47		94.64	186.58	<0.001	Unchanged
Either clinical or social dimensions assessed	8	65.98	48.13	80.21		95.31	149.29	<0.001	Unchanged
Both clinical and social dimensions assessed	16	25.23	16.87	35.93		98.30	885.45	<0.001	28.2 (18.4-40.7) [2]
<i>Duration criterion >1 years</i>					0.018				
No	22	45.99	35.30	57.05		95.02	421.82	<0.001	Unchanged
Yes	13	26.39	16.99	38.57		98.63	877.20	<0.001	Unchanged

<i>Duration criterion >2 years</i>					0.010				
No	26	44.64	34.82	54.90		95.55	561.97	<0.001	Unchanged
Yes	9	22.03	12.46	35.93		98.94	753.23	<0.001	Unchanged
<i>Method measuring recovery</i>					0.486				
Structured face-to-face assessment	9	30.67	17.34	48.26		92.77	110.63	<0.001	Unchanged
Structured assessment supplemented with clinical notes and/or interviews with parents	5	38.86	19.56	62.42		94.99	79.92	<0.001	Unchanged
Clinical records	1	45.18	9.08	87.18		0.00	0.00	1.000	Unchanged
Semi-structured interview of patients and their relatives conducted at home by researchers	1	78.57	29.61	96.97		0.00	0.00	1.000	Unchanged
<i>Study year group</i>					0.041				
Before 1976	1	44.46	10.76	84.16		0.00	0.00	1.000	N/A

1976-1997	9	45.15	29.66	61.63		93.65	126.01	<0.001	55.6 (41.1-69.0) [2]
1997-2016	23	32.09	23.94	41.50		97.36	832.82	<0.001	Unchanged
<i>Study region</i>					<0.001				
North American	10	71.01	56.76	82.04		94.00	150.09	<0.001	68.5 (48.6-83.4) [1]
Europe	14	21.79	14.62	31.20		97.01	434.22	<0.001	26.3 (16.6-38.9) [3]
Asia	8	35.05	22.10	50.65		96.21	184.51	<0.001	38.7 (26.5-52.5) [1]
Multiregion	1	49.15	14.21	84.95		0.00	0.00	1.000	N/A
Australia	2	28.07	9.99	57.85		31.25	1.45	0.228	N/A
<i>Study type</i>					0.040				
Prospective longitudinal	26	33.22	25.43	42.04		97.10	861.67	<0.001	Unchanged
Retrospective	3	28.57	11.88	54.26		95.69	46.36	<0.001	Unchanged
Combination of interviews and clinical notes	4	64.03	40.56	82.29		95.33	64.18	<0.001	Unchanged
Cross-sectional	2	60.01	28.66	84.86		94.56	18.40	<0.001	N/A
<i>FU categories</i>					0.044				

1-2 years	9	54.05	38.95	68.44	95.21	167.01	<0.001	Unchanged	
2-6 years	11	32.26	21.49	45.31	97.84	462.01	<0.001	28.7 (16.9-45.3) [1]	
>6 years	15	32.43	23.36	43.04	94.41	250.50	<0.001	Unchanged	
<i>Study settings</i>					0.004				
Adult psychiatric hospitals	22	48.15	37.82	58.64	94.83	406.06	<0.001	Unchanged	
Community & early intervention services	4	18.39	7.90	37.17	0.00	0.10	0.992	Unchanged	
In-/out-patient psychiatric services	9	24.88	14.40	39.47	98.93	746.79	<0.001	Unchanged	

sd, standard deviation; df, degrees of freedom; FEP, first episode psychosis;

Table DS5 Meta regression of moderators of recovery in patients with first episode psychosis							
Main analysis all recovery studies		Number of comparison	β	95% CI		p-value	R ²
Moderator							
	Age (mean)	31	0.04	-0.05	0.13	0.393	0.03
	Males (%)	32	-0.03	-0.09	0.04	0.403	0.01
	Baseline psychotic symptoms(mean)	11	0.00	-0.03	0.02	0.813	0.01
	DUP (mean)	5	0.00	0.00	0.00	0.078	0.37
	DUP (median)	11	0.00	0.00	0.00	0.378	0.06
	Taking antipsychotic medications (%)	9	0.01	-0.03	0.05	0.639	0.02
	Employed (%)	12	-0.03	-0.05	0.00	0.085	0.24
	Single (%)	10	0.06	-0.02	0.14	0.144	0.15
	White (%)	14	0.02	0.01	0.04	0.002	0.41
	Black (%)	12	0.02	-0.02	0.06	0.302	0.15
	Asian (%)	11	-0.02	-0.04	0.00	0.019	0.32
	Drop-out	27	-0.04	-0.07	-0.01	0.009	0.21
	Length of follow up	34	-0.06	-0.14	0.03	0.177	0.05
	Study year publication	34	-0.02	-0.09	0.04	0.486	0.03

Fig. DS1 Pooled rate of remission for included studies.

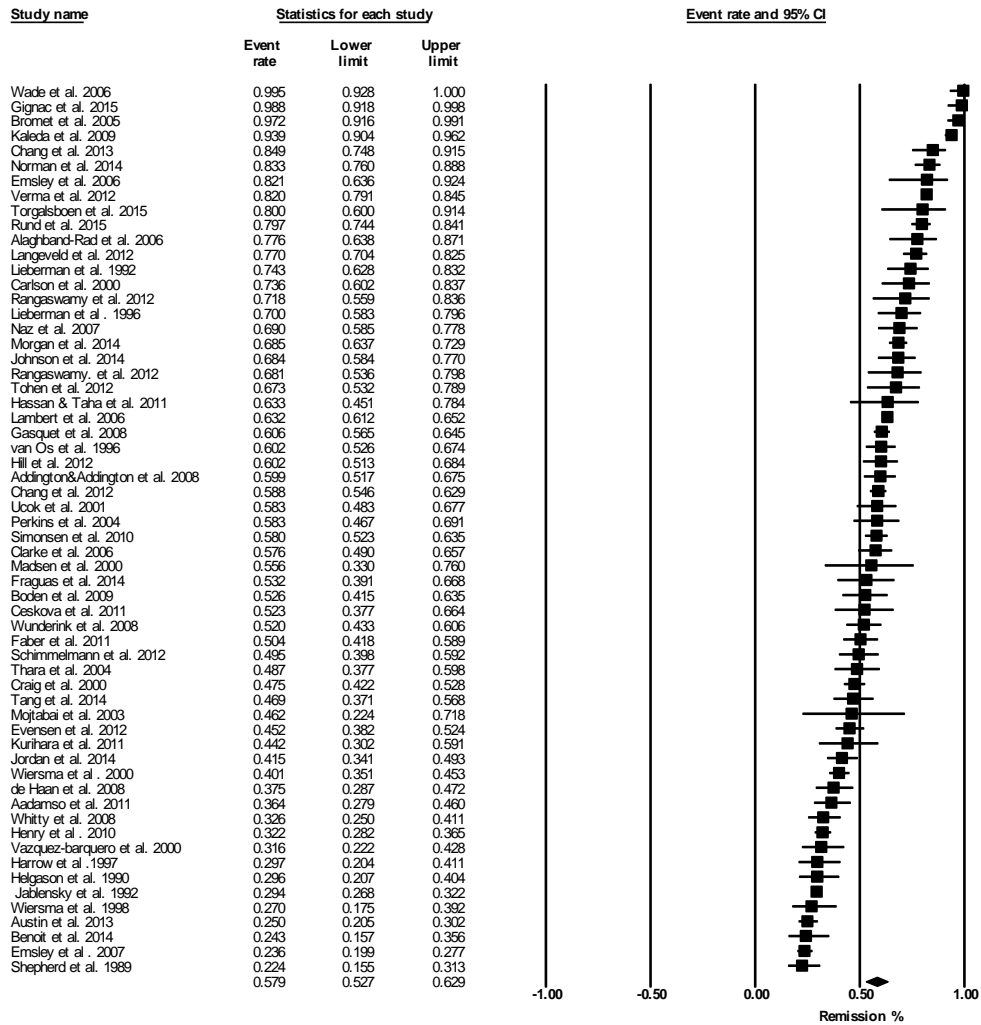


Fig. DS2 Remission: funnel plot of standard error by logit event rate in quantitative synthesis of remission.

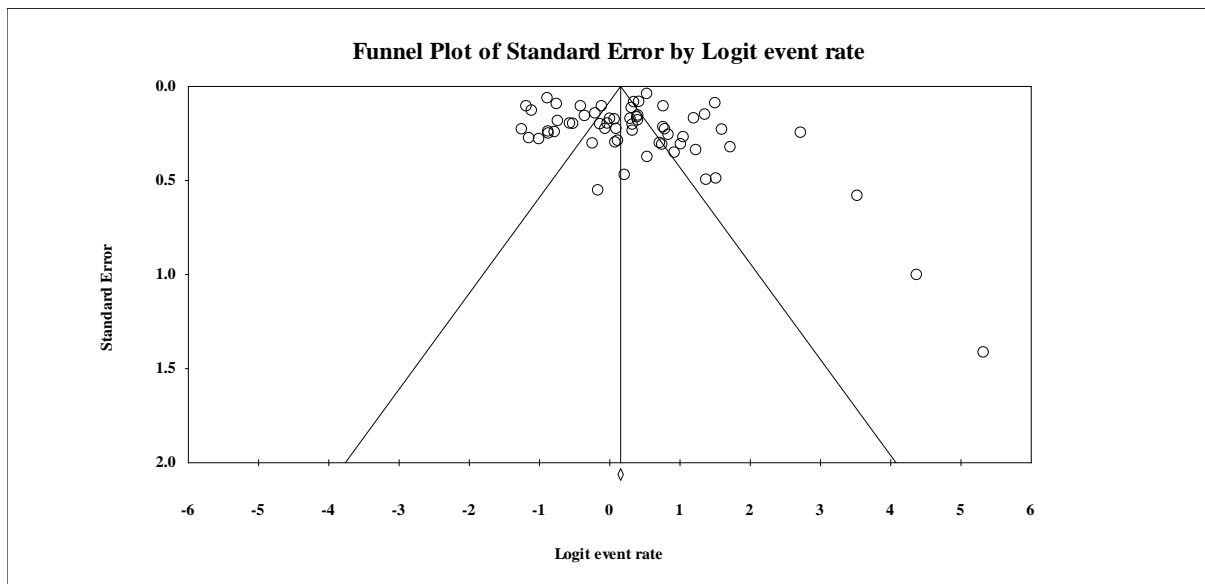


Fig. DS3 Pooled rate of recovery for included studies.

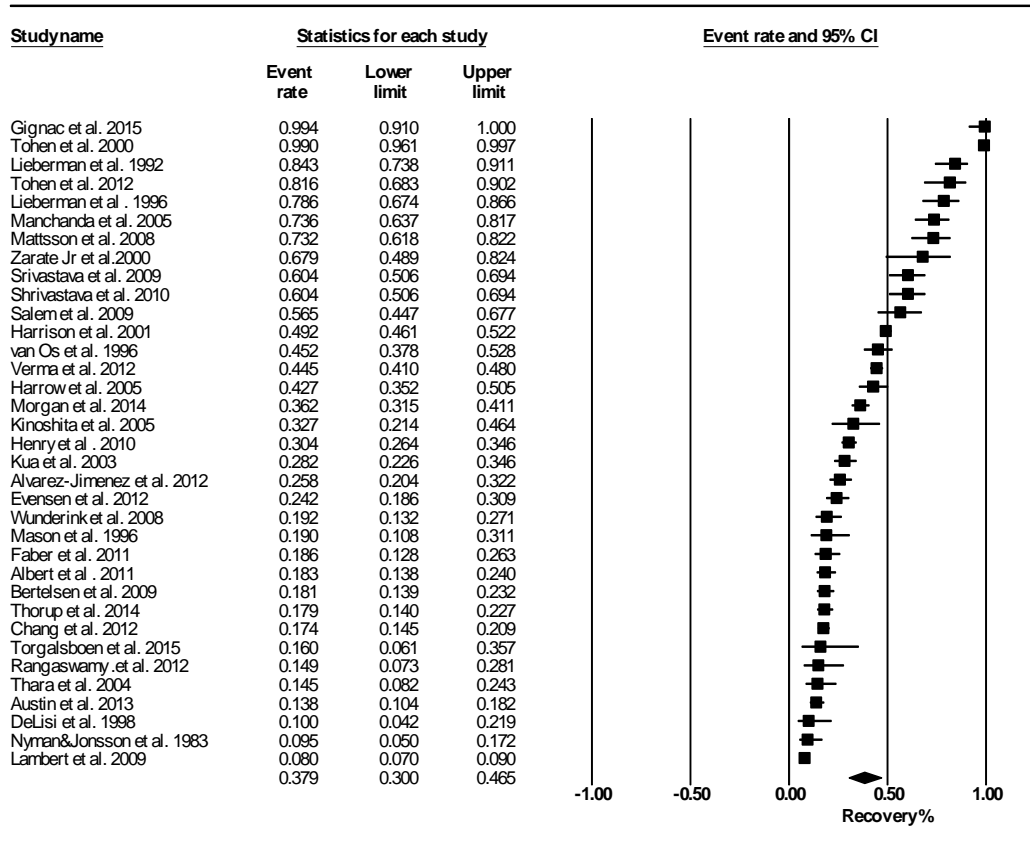


Fig. DS4 Remission: funnel plot of standard error by logit event rate in quantitative synthesis of remission.

