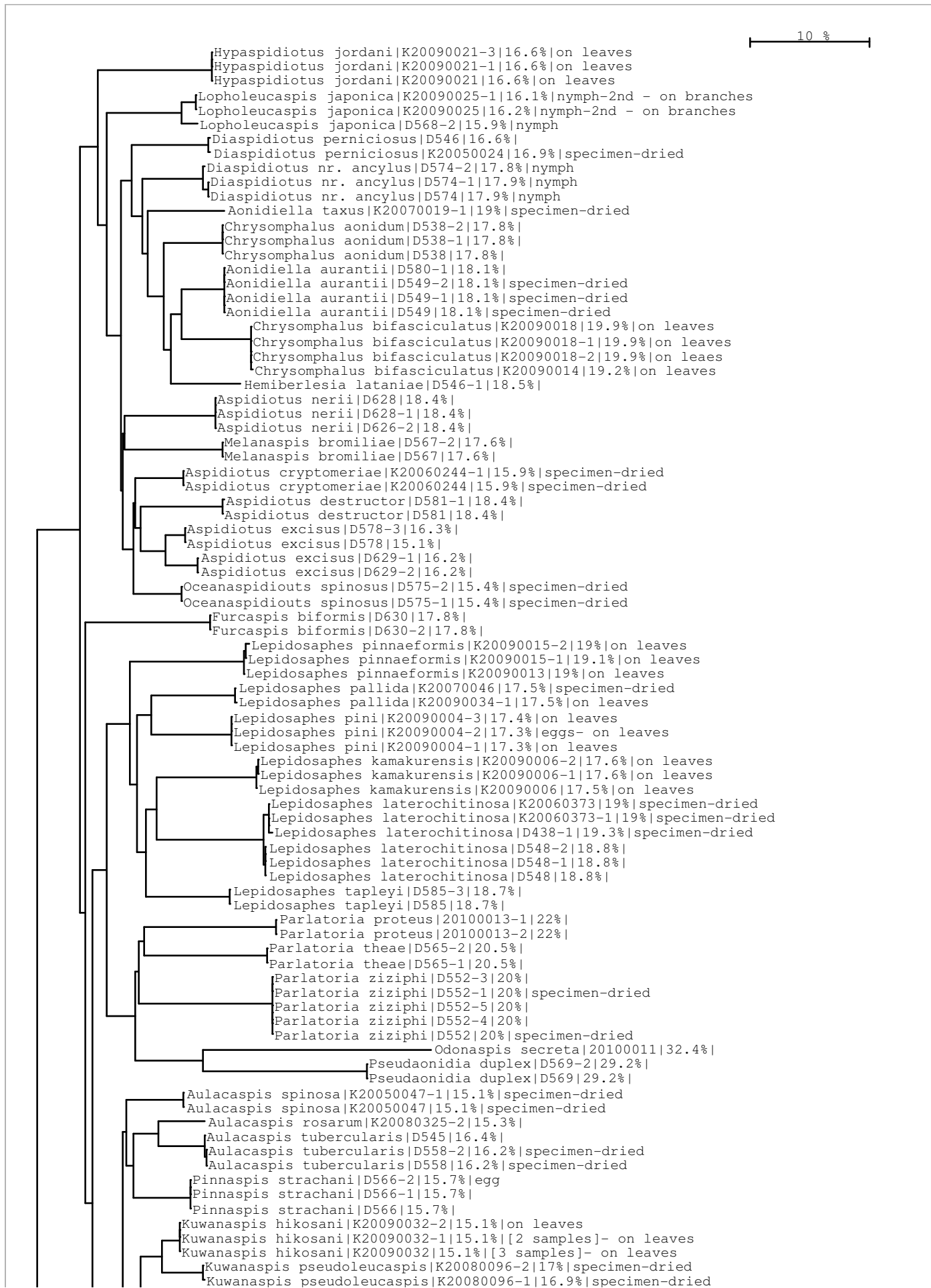


# BOLD TaxonID Tree

Project : DNA barcoding the scale insect [DBSI]  
Date : 6-August-2010  
Data Type : Nucleotide  
Distance Model : Kimura 2 Parameter  
Codon Positions : 1st, 2nd, 3rd  
Labels : Extra Info, SampleID, GC Composition,  
Colorization :

Sequence Count : 343  
Species count : 64  
Genus count : 32  
Family count : 2  
Unidentified : 27



Kuwanaspis nikosani|K20090032|15.1%|13 samples|- on leaves  
 Kuwanaspis pseudoleucaspis|K20080096-2|17%|specimen-dried  
 Kuwanaspis pseudoleucaspis|K20080096-1|16.9%|specimen-dried  
 Unachionaspis tenuis|K20090026|15.7%|on leaves  
 Unachionaspis tenuis|K20050036-2|15.7%|specimen-dried  
 Unachionaspis tenuis|K20050036-1|15.7%|specimen-dried  
 Unachionaspis tenuis|K20050036|15.7%|specimen-dried  
 Pseudaulacaspis cockerelli|K20090001-2|16.8%|on leaves  
 Pseudaulacaspis cockerelli|K20090001|16.3%|on leaves  
 Pseudaulacaspis cockerelli|K20090028-1|16.3%|on leaves  
 Pseudaulacaspis cockerelli|K20090035|16.8%|on branches  
 Pseudaulacaspis cockerelli|K20090037-3|16.5%|on branches  
 Pseudaulacaspis cockerelli|K20090035-2|16.4%|on branches  
 Pseudaulacaspis cockerelli|K20090035-1|16.7%|on branches  
 Pseudaulacaspis cockerelli|K20090037-2|16.6%|on branches  
 Pseudaulacaspis cockerelli|K20090037-1|16.6%|on branches  
 Pseudaulacaspis cockerelli|K20090037|16.6%|on branches  
 Pseudaulacaspis cockerelli|K20090011-1|16.5%|on leaves  
 Pseudaulacaspis cockerelli|K20090011-3|16.3%|on leaves  
 Pseudaulacaspis cockerelli|K20090011-2|16.3%|on leaves  
 Pseudaulacaspis cockerelli|K20090011|16.3%|on leaves  
 Pseudaulacaspis cockerelli|K20080349-2|16.4%|  
 Pseudaulacaspis cockerelli|K20080349-1|16.4%|  
 Pseudaulacaspis cockerelli|K20080349|16.4%|  
 Pseudaulacaspis pentagona|D401-2|16.4%|specimen-dried  
 Pseudaulacaspis pentagona|D573-1|15.2%|  
 Pseudaulacaspis pentagona|D573-2|16.3%|  
 Pseudaulacaspis pentagona|D573|16.3%|  
 Pseudaulacaspis pentagona|D406-2|16.9%|specimen-dried  
 Pseudaulacaspis pentagona|D406|16.7%|specimen-dried  
 Pseudaulacaspis prunicola|K20090023-1|16.6%|on branches  
 Pseudaulacaspis prunicola|K20090023|16.6%|on branches  
 Unaspis euonymi|K20060158-2|17.5%|specimen-dried  
 Unaspis euonymi|K20060158-1|17%|specimen-dried  
 Unaspis euonymi|K20060158|17%|specimen-dried  
 Unaspis yanonensis|D542-2|18.2%|  
 Unaspis yanonensis|D542-1|18.2%|  
 Unaspis yanonensis|D542|18.2%|  
 Hemiptera|P1148-1|14.1%|Nipaecoccus nipae  
 Hemiptera|P1148-2|14.2%|Nipaecoccus nipae  
 Hemiptera|P1148|14.2%|Nipaecoccus nipae  
 Hemiptera|P1152-2|14.2%|Nipaecoccus nipae  
 Hemiptera|P1152-1|14.2%|Nipaecoccus nipae  
 Hemiptera|P1152|14.2%|Nipaecoccus nipae  
 Dysmicoccus neobrevipes|P1131-1|13.9%|nymph  
 Dysmicoccus neobrevipes|P1131|13.9%|  
 Dysmicoccus neobrevipes|P1089|13.7%|  
 Dysmicoccus neobrevipes|P1127-1|13.9%|  
 Dysmicoccus neobrevipes|P1127|13.9%|  
 Dysmicoccus neobrevipes|P1089-1|13.9%|  
 Dysmicoccus neobrevipes|P1127-2|13.9%|  
 Dysmicoccus neobrevipes|P1166-1|13.9%|adult  
 Dysmicoccus neobrevipes|P1166|13.9%|adult  
 Dysmicoccus neobrevipes|P1166-3|13.9%|adult  
 Dysmicoccus neobrevipes|P1166-2|13.9%|adult  
 Dysmicoccus neobrevipes|P1172-1|13.9%|adult  
 Dysmicoccus neobrevipes|P1172|13.9%|adult  
 Dysmicoccus neobrevipes|P1172-3|13.9%|adult  
 Dysmicoccus neobrevipes|P1172-2|13.9%|adult  
 Dysmicoccus neobrevipes|P938-2|13.9%|adult  
 Dysmicoccus neobrevipes|P938-1|13.9%|adult  
 Dysmicoccus neobrevipes|P1150-1|13.9%|  
 Dysmicoccus neobrevipes|P1150-2|14%|  
 Dysmicoccus neobrevipes|P1150|13.4%|  
 Dysmicoccus brevipipes|P1192|13.9%|adult  
 Dysmicoccus brevipipes|P1159-3|14%|  
 Dysmicoccus brevipipes|P1179-1|13.9%|adult  
 Dysmicoccus brevipipes|P1192-3|14.2%|adult  
 Dysmicoccus brevipipes|P1192-2|10.8%|adult  
 Dysmicoccus brevipipes|P1192-1|14.2%|adult  
 Dysmicoccus brevipipes|P1179|14.1%|adult  
 Dysmicoccus brevipipes|P1159-1|14.1%|  
 Dysmicoccus brevipipes|P1159|14.1%|  
 Dysmicoccus brevipipes|P1159-2|13.9%|  
 Coccurea comari|20090099-3|15.4%|  
 Coccurea comari|20090099-2|15.6%|  
 Coccurea comari|20090099-1|15.6%|  
 Hemiptera|P1164-2|15.6%|Stemmatomerinx acircula- specimen-dried  
 Hemiptera|P1164|15.6%|Stemmatomerinx acircula- nymph- specimen-dried  
 Phenacoccus aceris|K20090019-3|15.7%|nymph  
 Phenacoccus aceris|K20090019-2|15.3%|nymph  
 Phenacoccus aceris|K20090019-1|15.7%|adult  
 Phenacoccus aceris|K20090019|15.7%|adult  
 Phenacoccus aceris|2008-0072-1|15.6%|  
 Phenacoccus aceris|Mb35|15.5%|  
 Phenacoccus aceris|Mb34|15.5%|  
 Phenacoccus aceris|2008-0058-2|15.5%|  
 Phenacoccus aceris|2008-0058-1|15.5%|  
 Phenacoccus avenae|P1019-6|17.2%|female+male

Phenacoccus aceris|2008-0058-1|15.5%|  
 Phenacoccus avenae|P1019-6|17.2%|female+male  
 Phenacoccus solani|P1175-3|16.3%|adult  
 Phenacoccus solani|P1175-2|16.3%|adult  
 Phenacoccus solani|P1175-1|16.3%|adult  
 Phenacoccus solani|P1175|16.3%|adult  
 Phenacoccus solani|P1107|15.1%|  
 Phenacoccus solani|P1107-2|15%|  
 Phenacoccus solani|P1107-1|15%|  
 Phenacoccus solani|P1110-2|15.3%|  
 Phenacoccus solani|P1110-1|15.1%|  
 Phenacoccus solani|P1110|15.1%|  
 Balanococcus takahashii|20090145-2|14.8%|  
 Balanococcus takahashii|20090145-1|14.8%|  
 Dysmicoccus lepelleyi|P1190|13.3%|adult  
 Dysmicoccus lepelleyi|P1190-3|13.3%|adult  
 Dysmicoccus lepelleyi|P1190-2|13.3%|adult  
 Dysmicoccus lepelleyi|P1190-1|13.3%|adult  
 Dysmicoccus lepelleyi|P1074-1|13.5%|nymph  
 Dysmicoccus lepelleyi|P1074-2|13%|nymph  
 Dysmicoccus lepelleyi|P1074|13.5%|  
 Paracoccus marginatus|P1173-2|12.9%|adult  
 Paracoccus marginatus|P1173-1|12.9%|adult  
 Paracoccus marginatus|P1173|12.9%|adult  
 Paracoccus marginatus|P1104-1|12.9%|  
 Paracoccus marginatus|P1191|12.9%|nymph  
 Paracoccus marginatus|P1173-3|12.9%|adult  
 Paracoccus marginatus|P1104|12.9%|  
 Planococcus ficus|P1218-3|14.5%|  
 Planococcus ficus|P1218-2|14.5%|  
 Planococcus ficus|P1218-1|14.5%|  
 Planococcus ficus|P1201-2|14.8%|  
 Planococcus ficus|P1201-1|14.8%|  
 Planococcus citri|P1106|14.9%|  
 Planococcus citri|P921|14.5%|adult  
 Planococcus citri|P921-1|14.5%|adult  
 Planococcus citri|2008-0156|14.8%|  
 Planococcus citri|2008-0001-2|14.7%|  
 Planococcus citri|2008-0001-1|14.7%|nymph  
 Planococcus citri|P1160|14.8%|  
 Planococcus citri|P1160-2|15%|  
 Planococcus citri|P1160-1|15%|  
 Planococcus citri|P1106-1|14.8%|  
 Planococcus citri|k20050070-3|14.8%|  
 Planococcus minor|P927-1|14.8%|adult  
 Planococcus minor|P1043-2|14.7%|  
 Planococcus minor|P1045-1|14.7%|  
 Planococcus minor|P1045-2|14.7%|  
 Planococcus minor|P1046|14.7%|  
 Planococcus minor|P1121-1|14.7%|  
 Planococcus minor|P915|14.7%|adult  
 Planococcus minor|P915-1|14.7%|adult  
 Planococcus minor|P1071-1|14.5%|  
 Planococcus minor|P1043-1|14.6%|  
 Planococcus kraunhiaie|20090091-1|16.7%|  
 Planococcus kraunhiaie|20090091-2|16.7%|  
 Planococcus kraunhiaie|P1016|16.7%|  
 Planococcus kraunhiaie|P1016-1-3|17%|  
 Planococcus kraunhiaie|P1016-1-2|17%|  
 Planococcus kraunhiaie|P1016-1-1|16.8%|  
 Planococcus kraunhiaie|P1016-2-1|16.8%|  
 Planococcus kraunhiaie|P1016-2-2|16.8%|  
 Planococcus kraunhiaie|P757-2|17%|  
 Planococcus kraunhiaie|P757-1|16.9%|  
 Hemiptera|P1151-2|15.2%|Exallomochlus liti  
 Hemiptera|P1151-1|15.5%|Exallomochlus liti  
 Hemiptera|P1151|15.5%|Exallomochlus liti  
 Pseudococcidae|P932-2|16.1%|adult  
 Pseudococcidae|P931-1|16.1%|adult  
 Pseudococcidae|P931|16.1%|adult  
 Planococcus|P927|13.7%|adult  
 Planococcus lilacinus|P1149-2|14.3%|  
 Planococcus lilacinus|P1129|14.3%|  
 Planococcus lilacinus|P1149-1|14.2%|  
 Planococcus lilacinus|P1149|14.2%|  
 Planococcus lilacinus|P1155-2|14.1%|  
 Planococcus lilacinus|P1155-1|14.1%|  
 Planococcus lilacinus|P1155|14.1%|  
 Pseudococcidae|P923-1|14%|adult  
 Crisicoccus pini|k179-2|15.5%|  
 Crisicoccus pini|k179-1|15.7%|  
 Crisicoccus matsumotoi|P1064-2|16.5%|  
 Crisicoccus matsumotoi|P1064-1|16.5%|  
 Crisicoccus matsumotoi|P1018-5-1|16.2%|  
 Crisicoccus matsumotoi|K173-01|16.3%|  
 Crisicoccus matsumotoi|P1052|16.4%|  
 Crisicoccus matsumotoi|2008-0119-5|16.3%|  
 Crisicoccus matsumotoi|2008-0119-4|16.4%|  
 Crisicoccus matsumotoi|2008-0119-3|16.4%|

