

Appendix 1

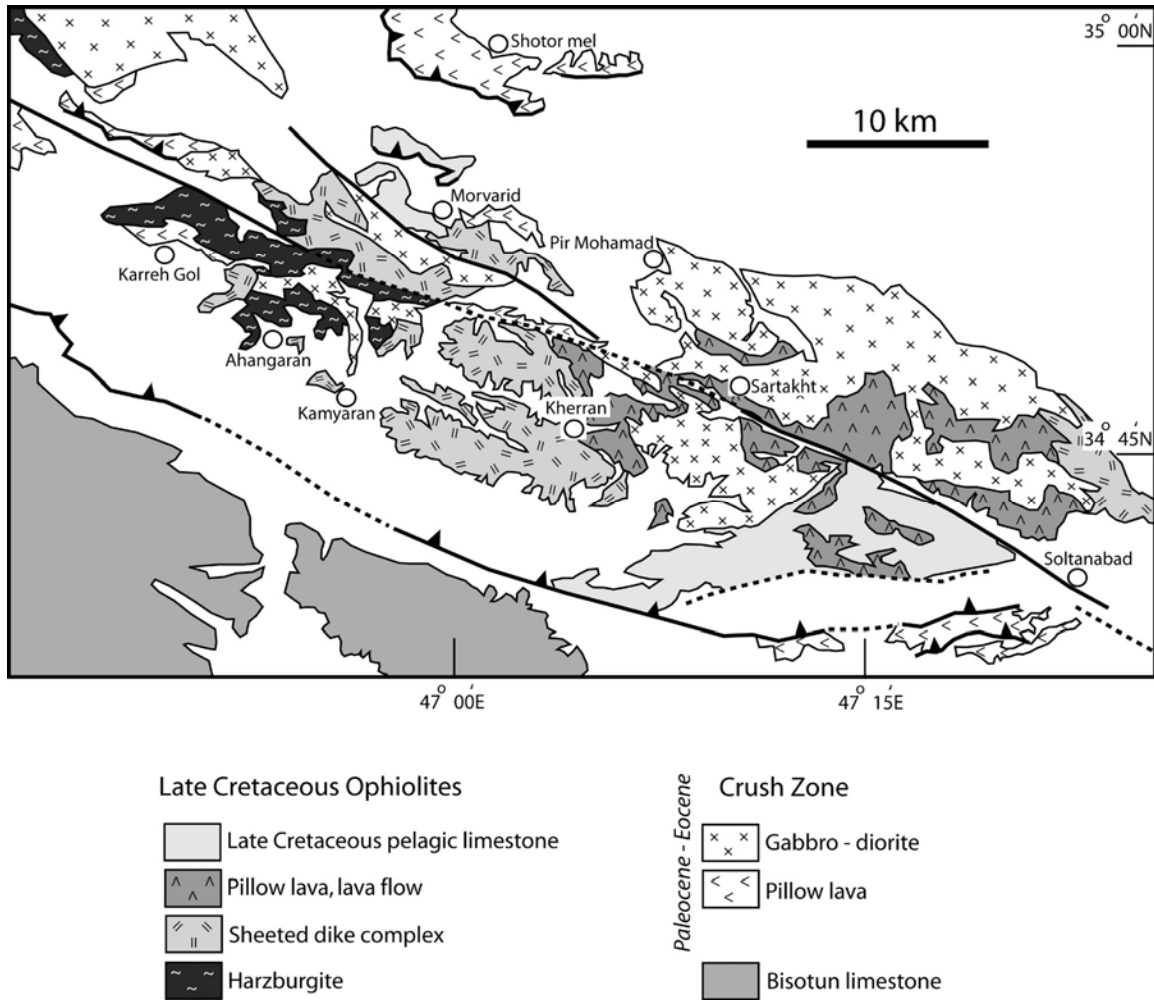


Figure A1: Simplified geologic map of the Kermanshah ophiolite (compiled after Braud, 1978).

## Outer Zagros Ophiolite Belt

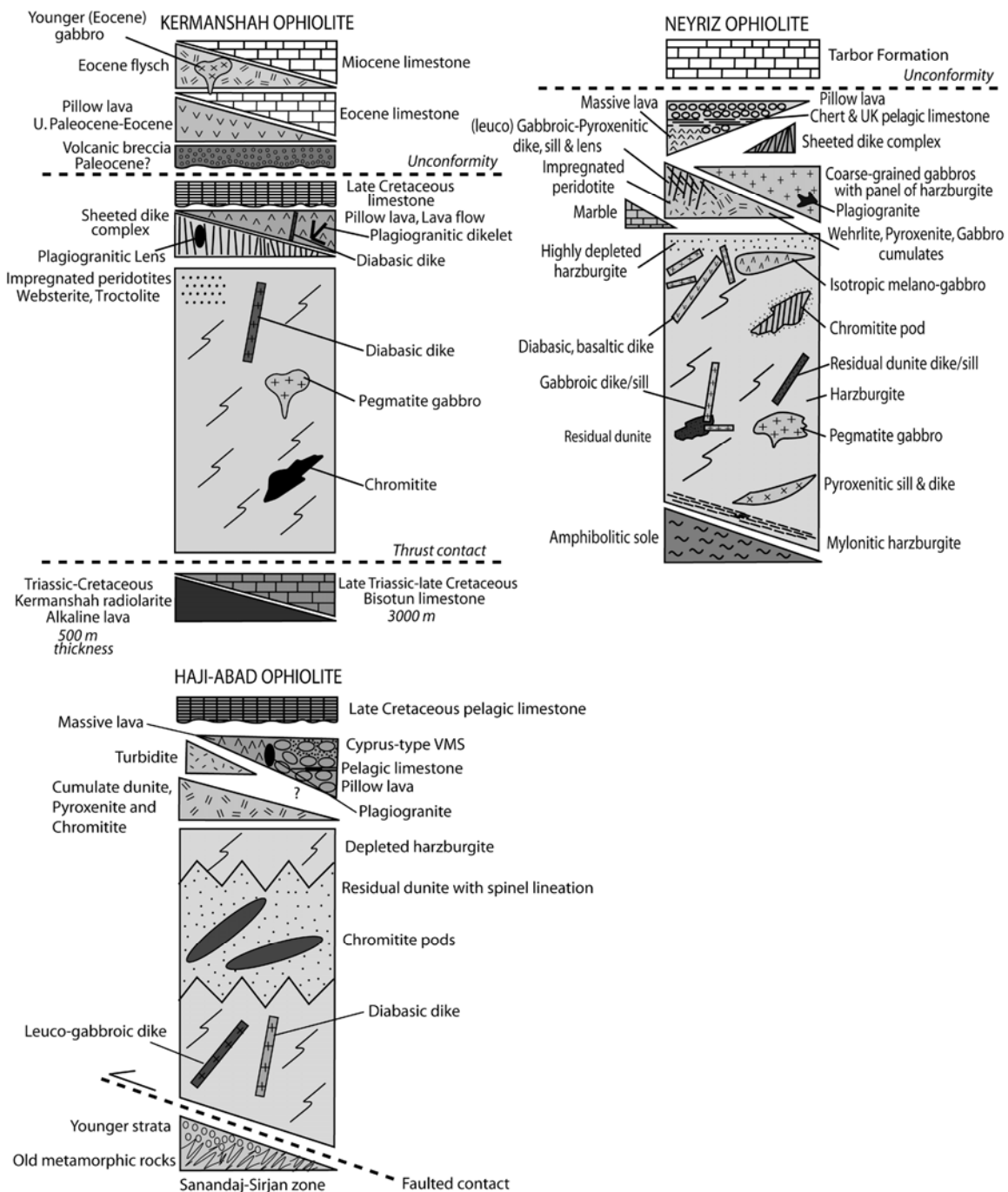


Figure A2: Simplified stratigraphic columns displaying idealized internal lithologic successions in the outer Zagros ophiolites (Kermanshah, Neyriz, and Haji-Abad).

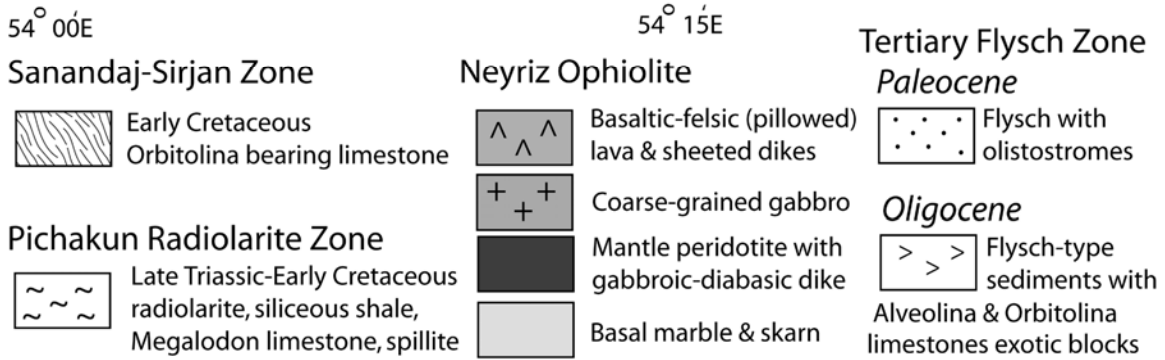
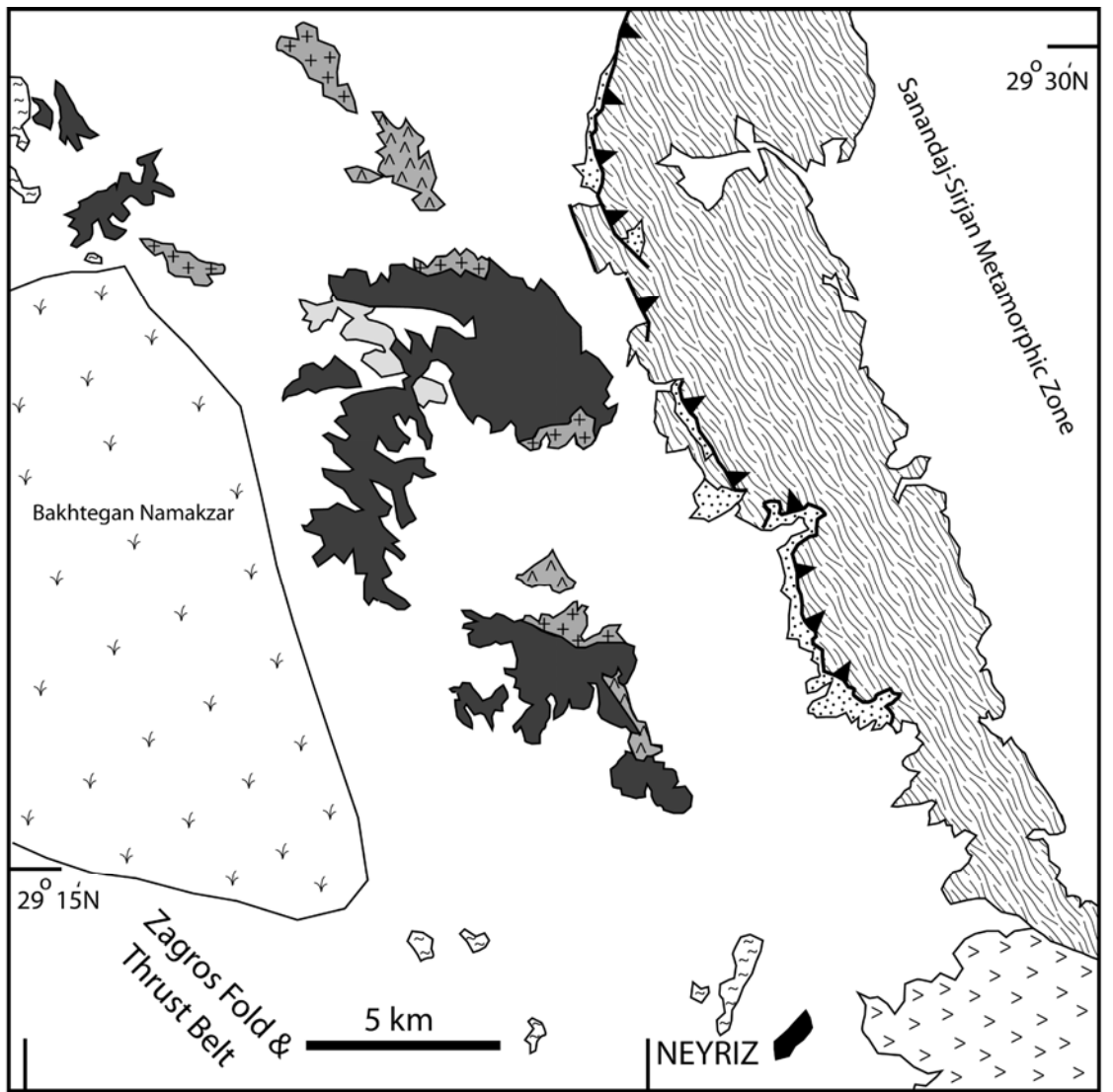


Figure A3: Simplified geologic map of the Neyriz ophiolite (compiled after Sabzehei, 1996).

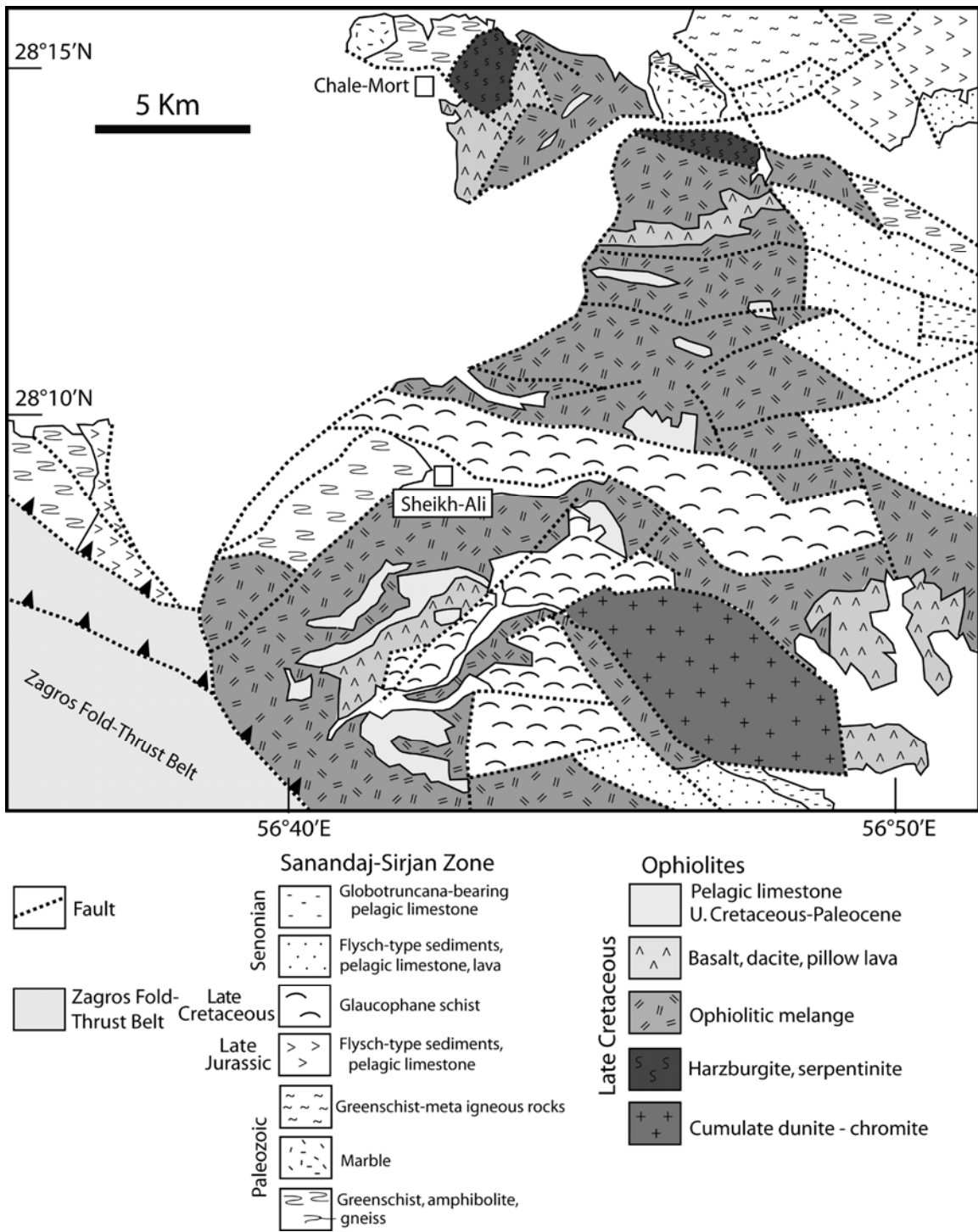


Figure A4: Simplified geologic map of the Haji-Abad ophiolite, N-NE of the MZT (compiled after Azizan & Naderi, 2007).

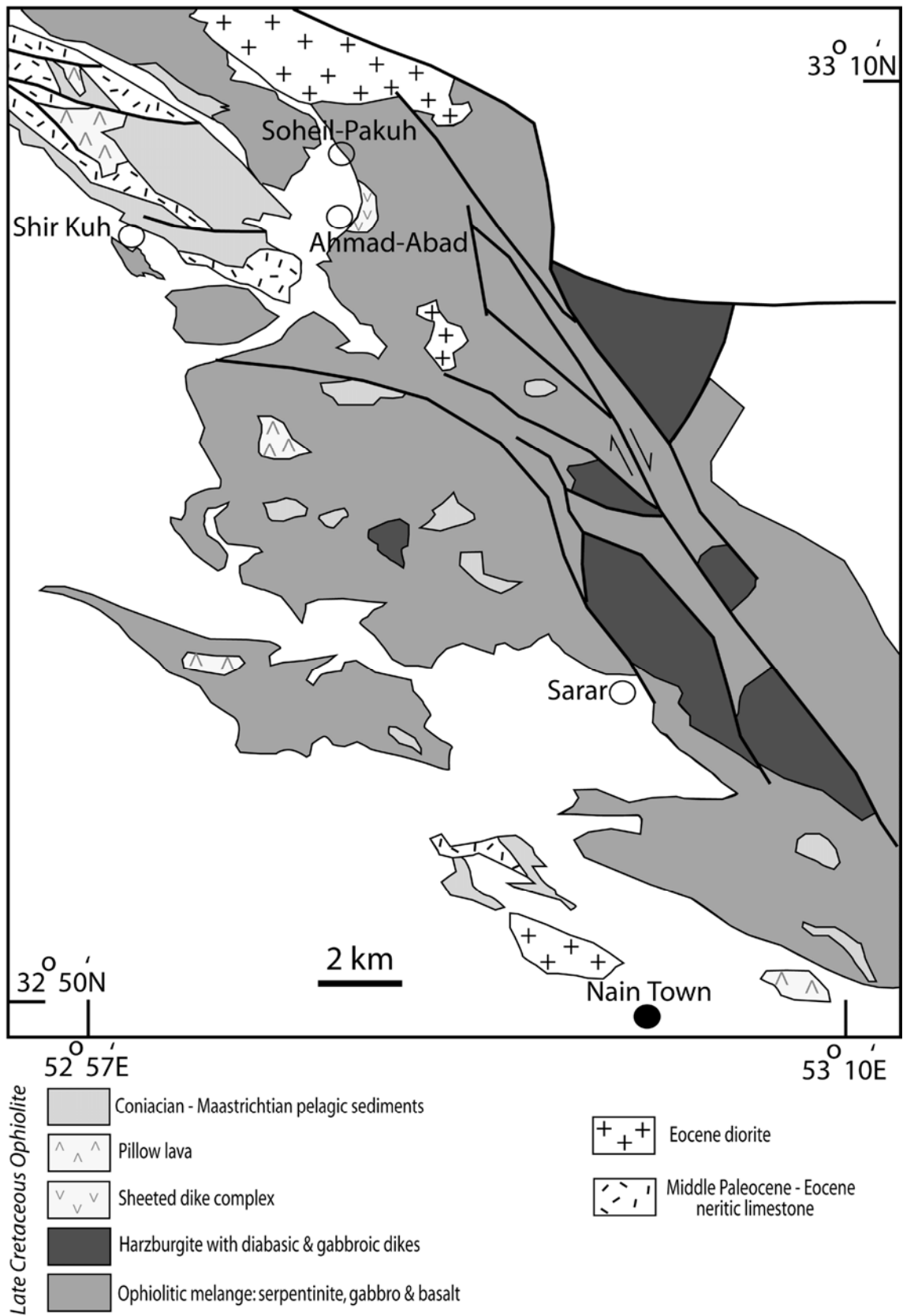


Figure A5: Simplified geologic map of the Nain ophiolite (compiled after Davoudzadeh, 1972).

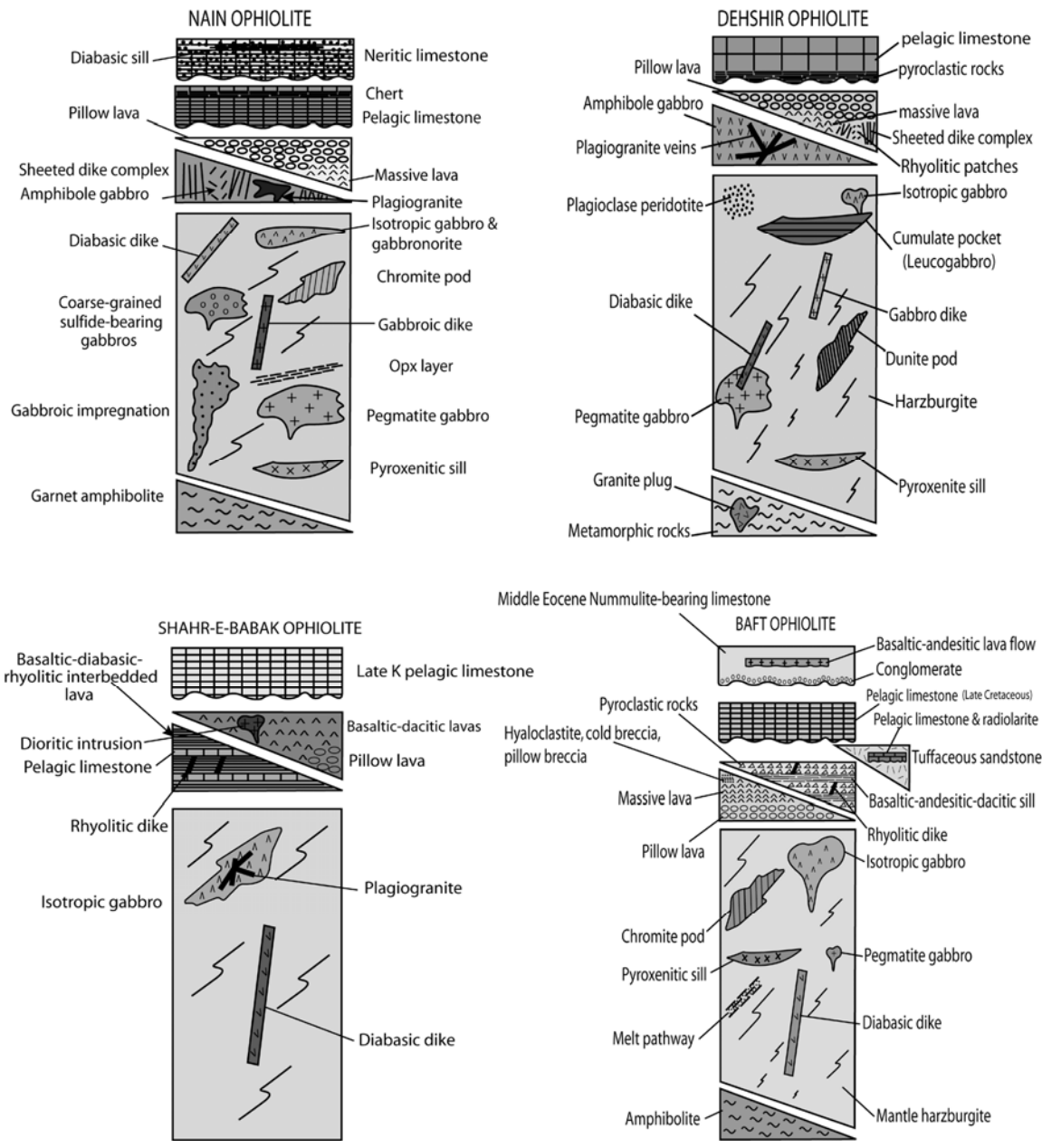


Figure A6: Simplified stratigraphic columns displaying idealized internal lithologic successions in the inner Zagros ophiolites (Nain, Dehshir, Shahr-e-Babak and Balvard-Baft).

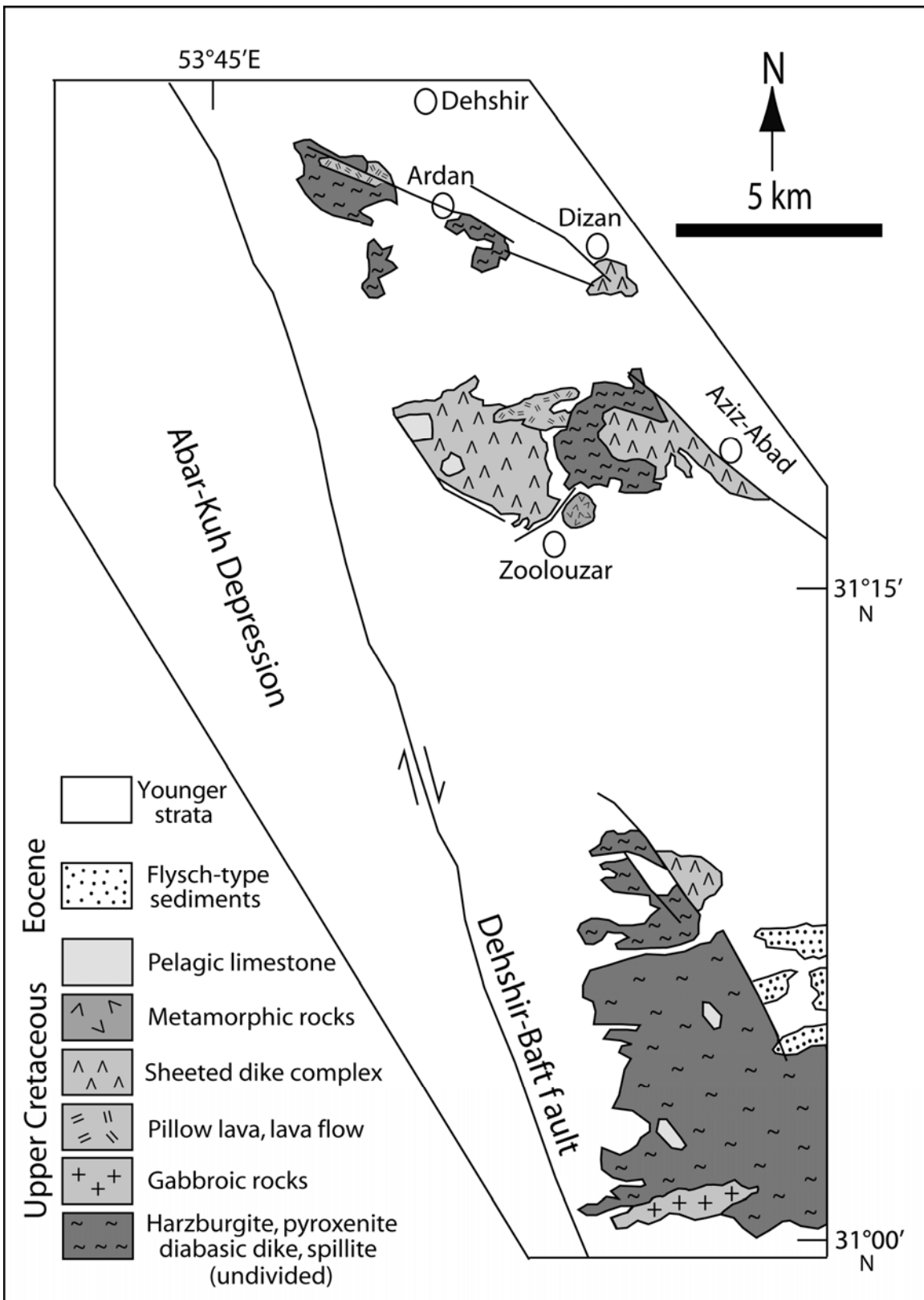


Figure A7: Simplified geologic map of the Dehshir ophiolite (compiled after Sabzehei, 1997).

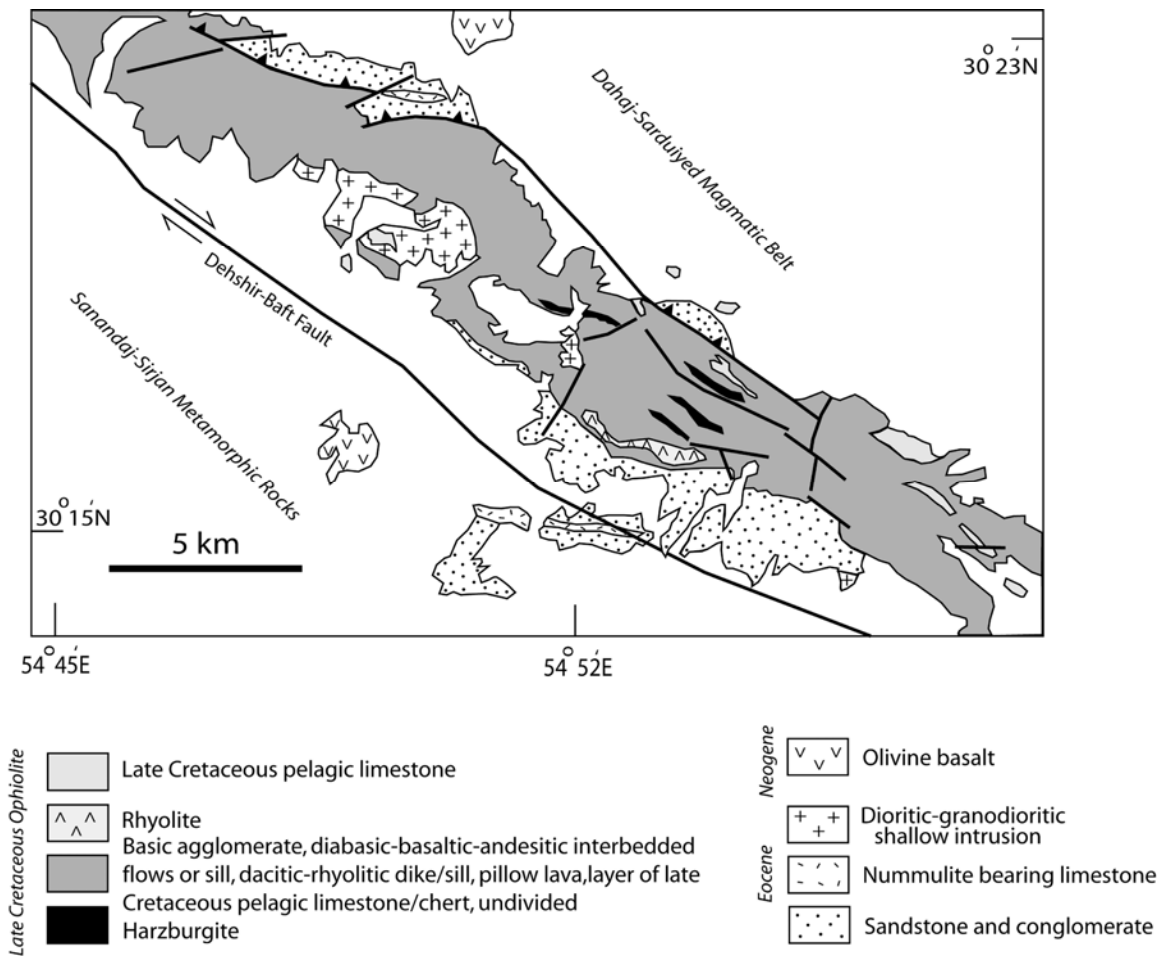


Figure A8: Simplified geologic map of the Shahr-e-Babak ophiolite (modified after Dimitrijevic, Djordjevic & Petrovic, 1971).

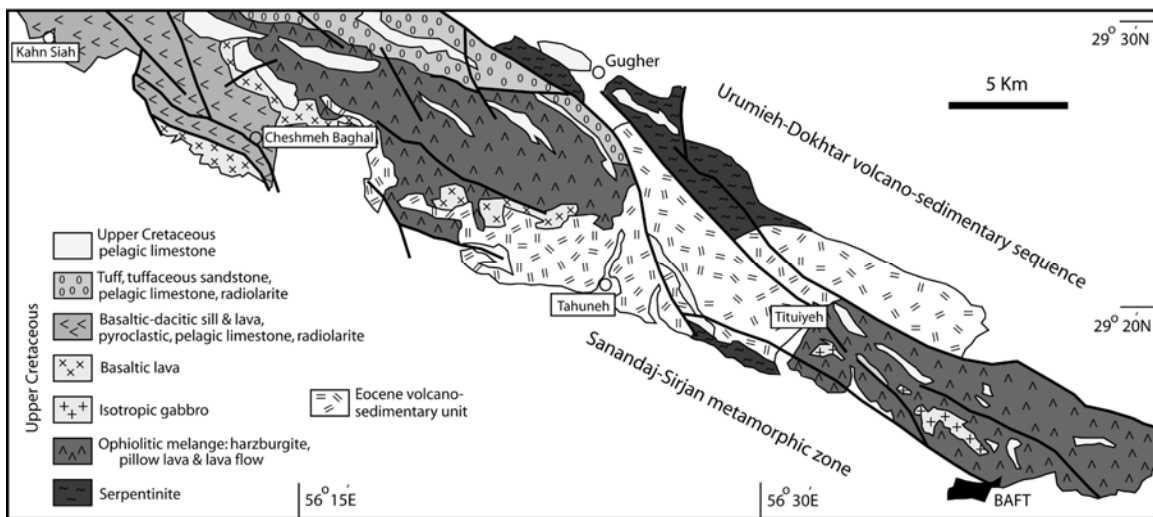
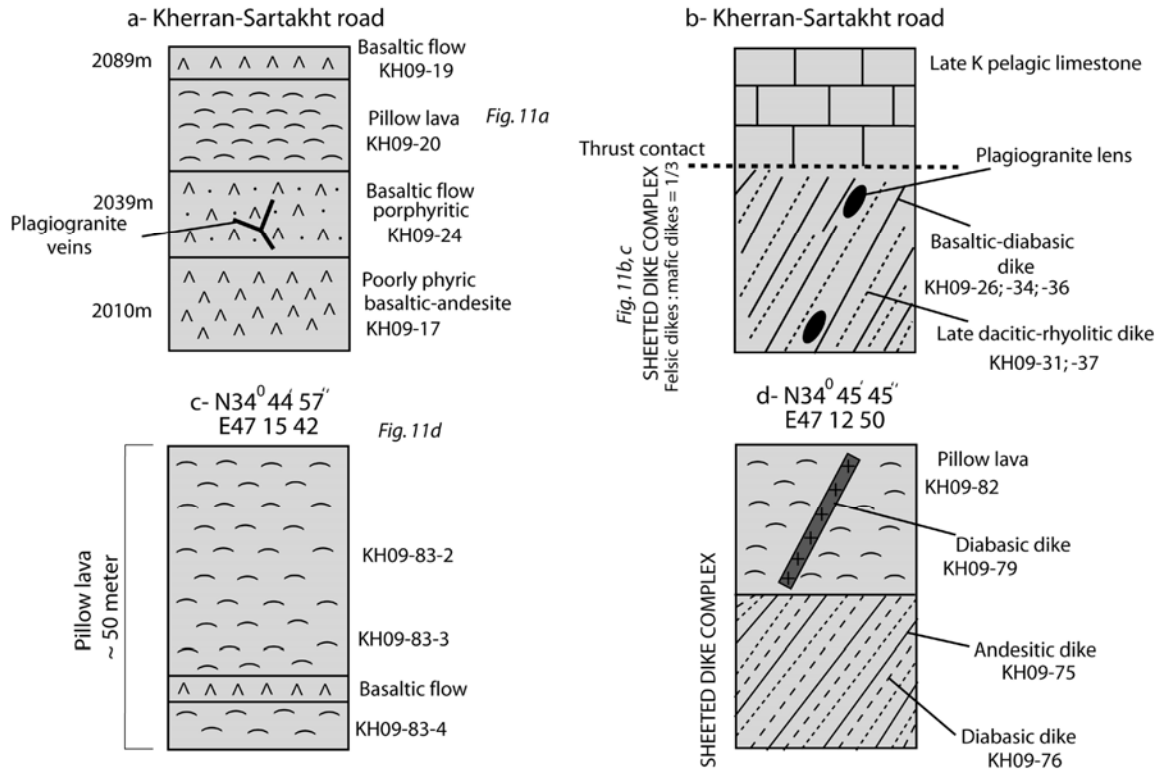


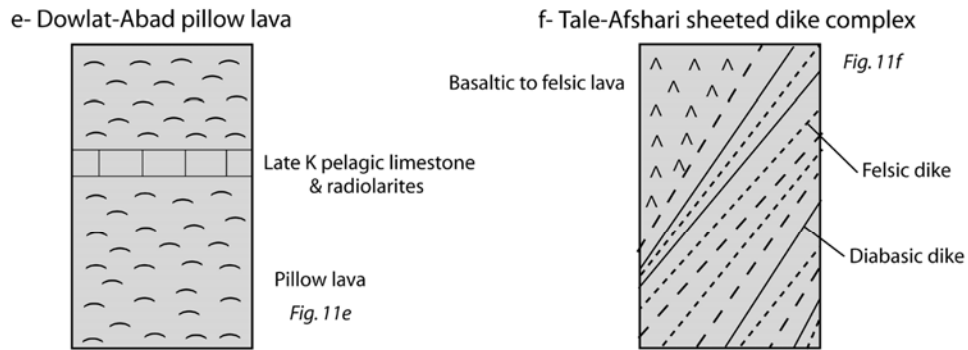
Figure A9: Simplified geologic map of the Balvard-Baft ophiolite (modified after Srdic *et al.* 1972 and Mijalkovic, Cvetic & Dimitrijevic, 1972).



A. KERMANSHAH OPHIOLITE



B. NEYRIZ OPHIOLITE



C. HAJI-ABAD OPHIOLITE

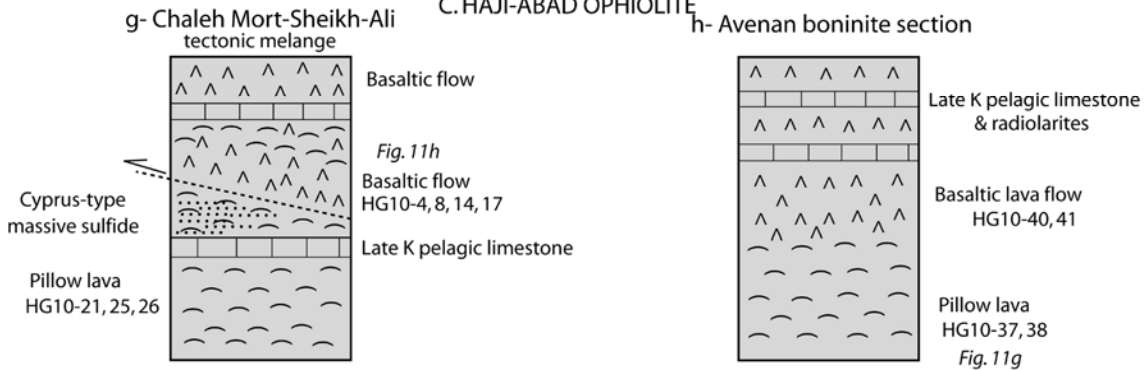
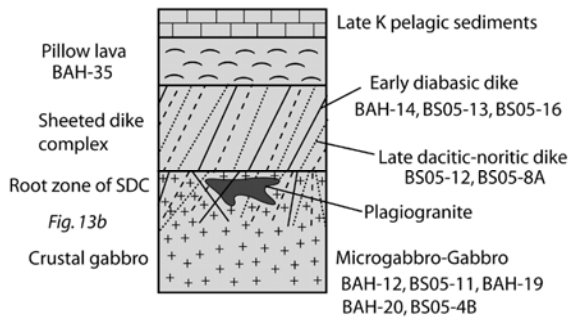


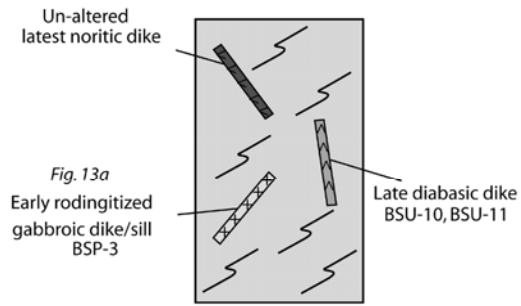
Figure A10: Simplified lithologic successions in outer belt ophiolites (Kermanshah, Neyriz and Haji-Abad ophiolites) to trace chemostratigraphical evolution of lavas in each ophiolite.

A. NAIN OPHIOLITE

a- Sheeted dike complex

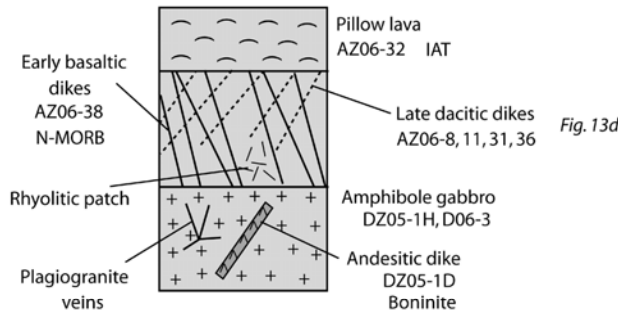


b- Dike intrusions in mantle peridotite

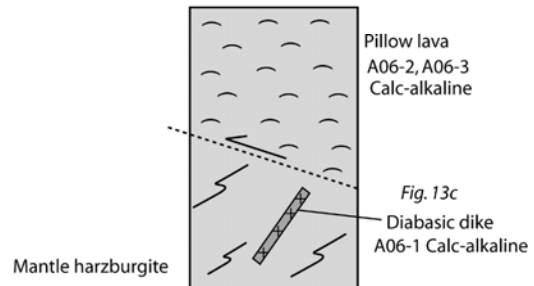


B. DEHSHIR OPHIOLITE

c- Sheeted dike complex

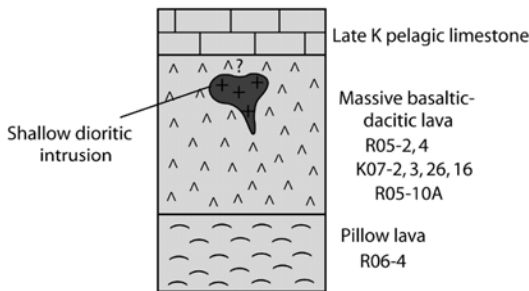


d- Ardan complex

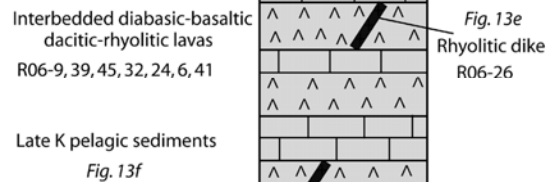


C. SHAHR-E-BABAK OPHIOLITE

e- Kamrud complex

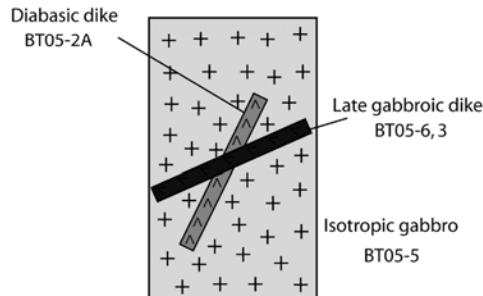


f- Chah-Bagh complex



D. BALVARD-BAFT OPHIOLITE

g- N-NW of Baft



h- Cheshmeh-Baghal complex

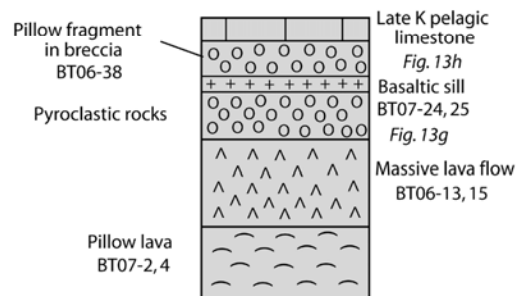


Figure A11: Simplified lithologic successions in Zagros inner belt ophiolites (Nain, Dehshir, Shahr-e-Babak and Balvard-Baft ophiolites) used to trace chemostratigraphical evolution of lavas in each ophiolite. Approximate positions of samples are shown.

## References

- AZIZAN, H. & NADERI, N. 2007. *Geological map of Dolat-Abad 1/100000 scale*. Geological Survey of Iran, Sheet No. 7346.
- BRAUD, J. 1978. *Geological map of Kermanshah 1/250000 scale*. Geological Survey of Iran.
- DAVOUDZADEH, M. 1972. *Geology and petrography of the area north of Nain, Central Iran*. Geological Survey of Iran, report No.14.
- DIMITRIJEVIC, M. D., DJORDJEVIC, M. & PETROVIC, Z. 1971. *Geological map of Robot. 1/100000 Series, Sheet 6950*.
- MIJALKOVIC, N., CVETIC, S. & DIMITRIJEVIC, M. D. 1972. *The geological map of Balvard. 1/100000 Series, Sheet 7248*.
- SABZEHEI, M. 1996. *The geological map of Neyriz. 1/100000 Series*. Geological Survey of Iran, Sheet 6848.
- SABZEHEI, M. 1997. *The geological map of Dehshir. 1/100000 Series*. Geological Survey of Iran, Sheet 6752.
- SRDIC, A., DIMITRIJEVIC, M. N., CVETIC, S. & DIMITRIJEVIC, M. D. 1972. *Geological map of Baft, 1/100000 Series, Sheet 7348*.