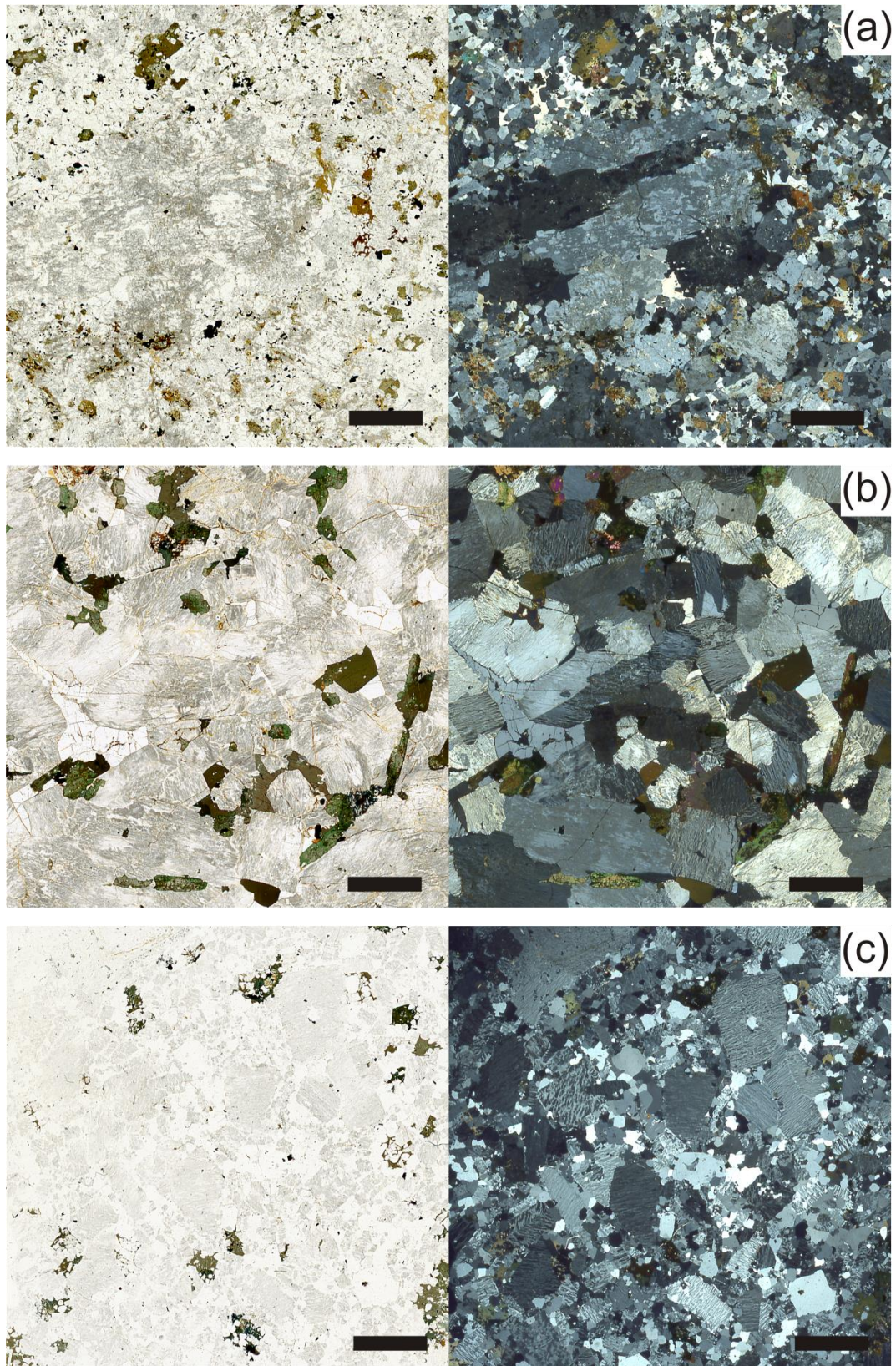


*Geological Magazine:*

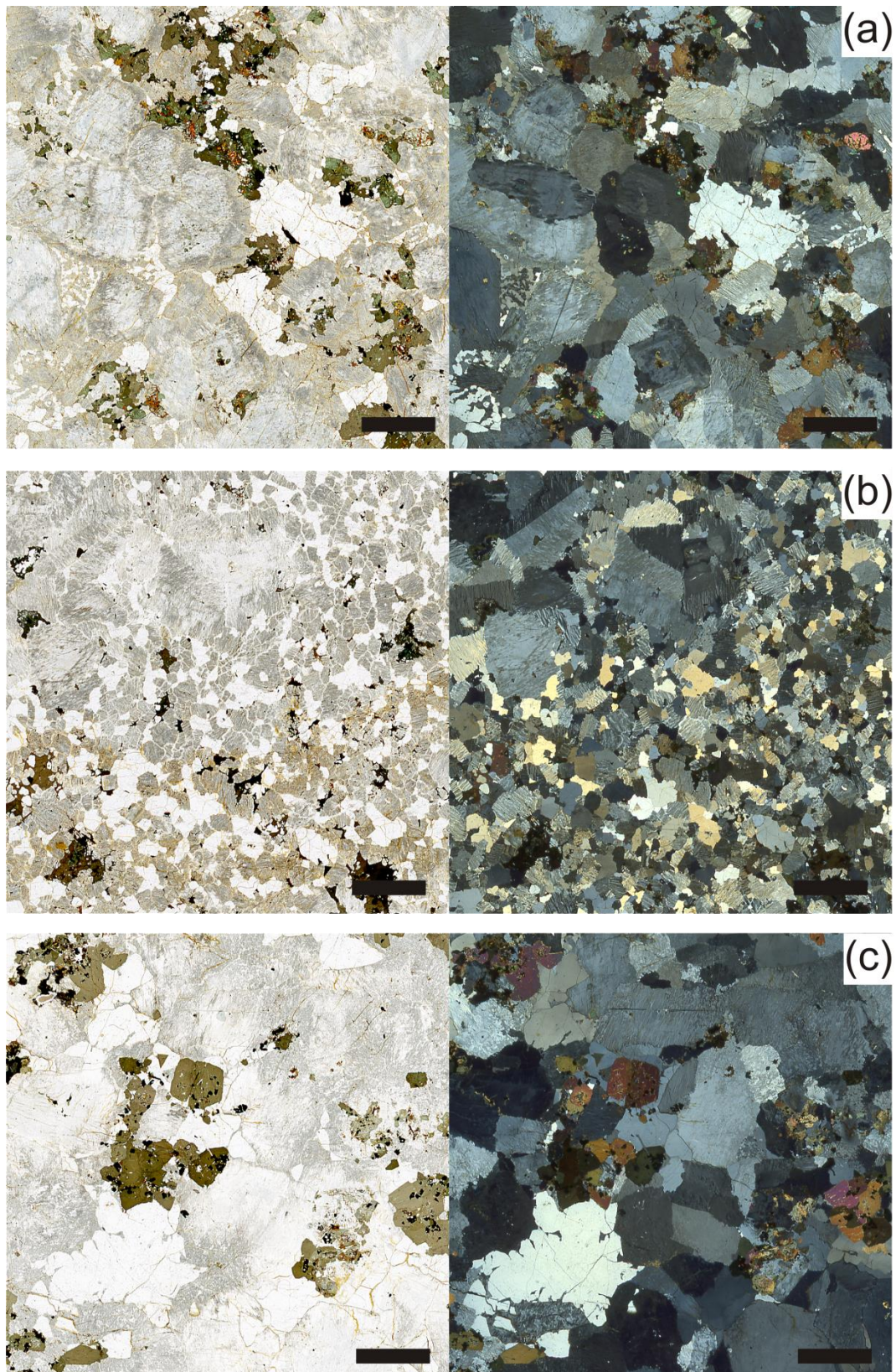
**U–Pb geochronology of the Eocene Kærven intrusive complex, East Greenland:  
constraints on the Iceland hotspot track during the rift-to-drift transition**

Sigurjón B. Thórarinsson, Paul M. Holm, Sebastian Tappe, Larry M. Heaman, Niels-Ole Prægel

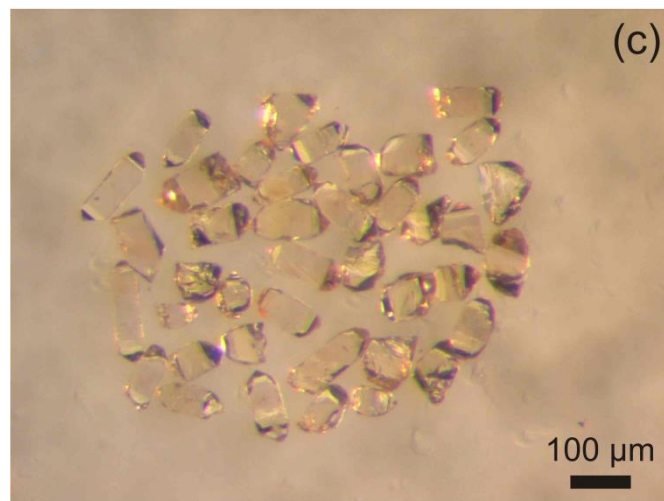
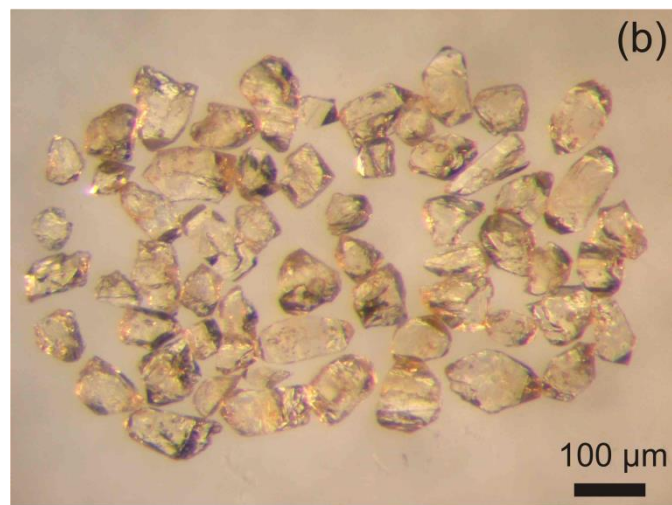
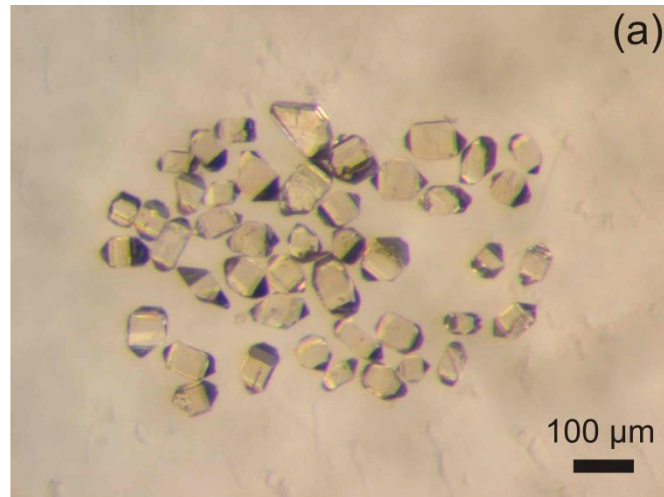
Supplementary Material (3 figures)



Supplementary Figure S1. Photomicrographs of representative thin sections from East Kærven using plane (left) and cross-polarised light (right), respectively. (a) East Monzonite. (b) East Syenite. (c) East Granite. Scale bars are 3 mm across.



Supplementary Figure S2. Photomicrographs of representative thin sections from West Kærven using plane (left) and cross-polarised light (right), respectively. (a) West Granite 1. (b) West Granite 2. (c) West Syenite. Scale bars are 3 mm across.



Supplementary Figure S3: Photomicrographs of representative zircon fractions from the Kærven Complex. (a) Fraction 40333c-2 (East Granite). (b) Fraction 74111-2 (West Granite 1). (c) Fraction 74349-2 (West Granite 2).