

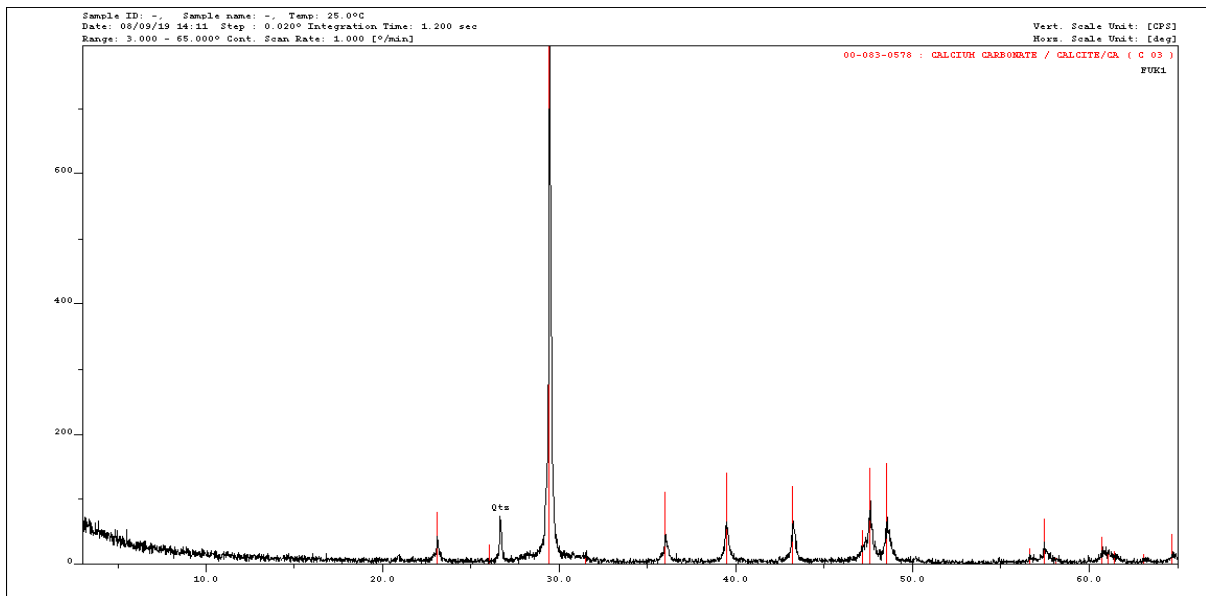
Formation, diagenesis and fauna of cold seep carbonates from the Miocene Taishu Group of Tsushima (Japan)

by

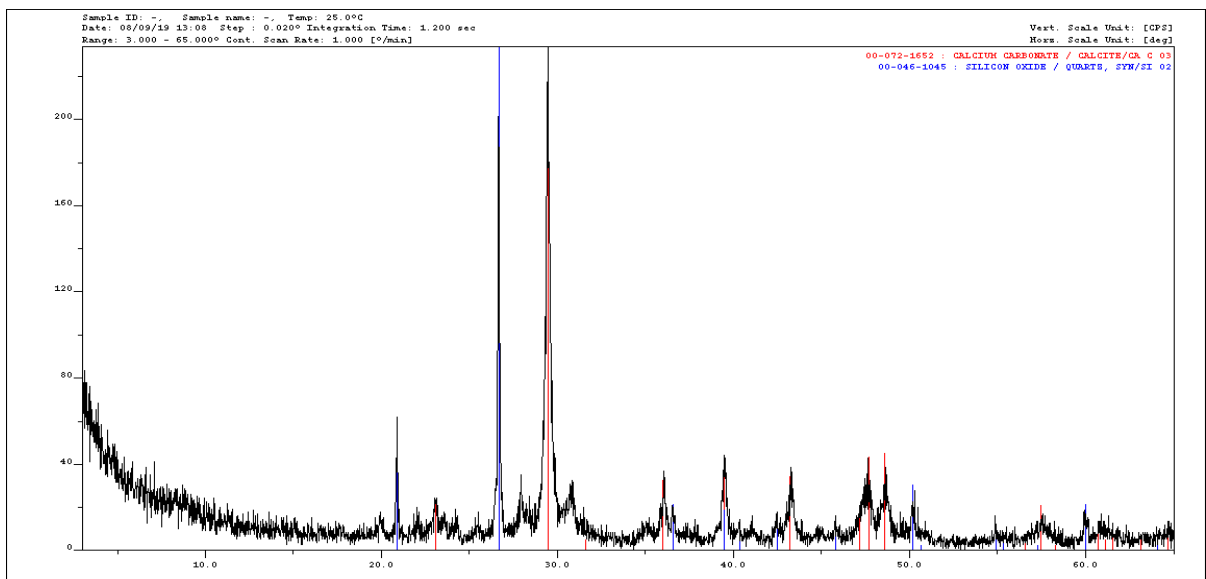
Krzysztof Hryniewicz, Yusuke Miyajima, Kazutaka Amano, Magdalena N. Georgieva, Michal Jakubowicz, Robert G. Jenkins, Andrzej Kaim

Supplementary material S1. XRD diagrams of sampled seep carbonate facies from Tsushima.

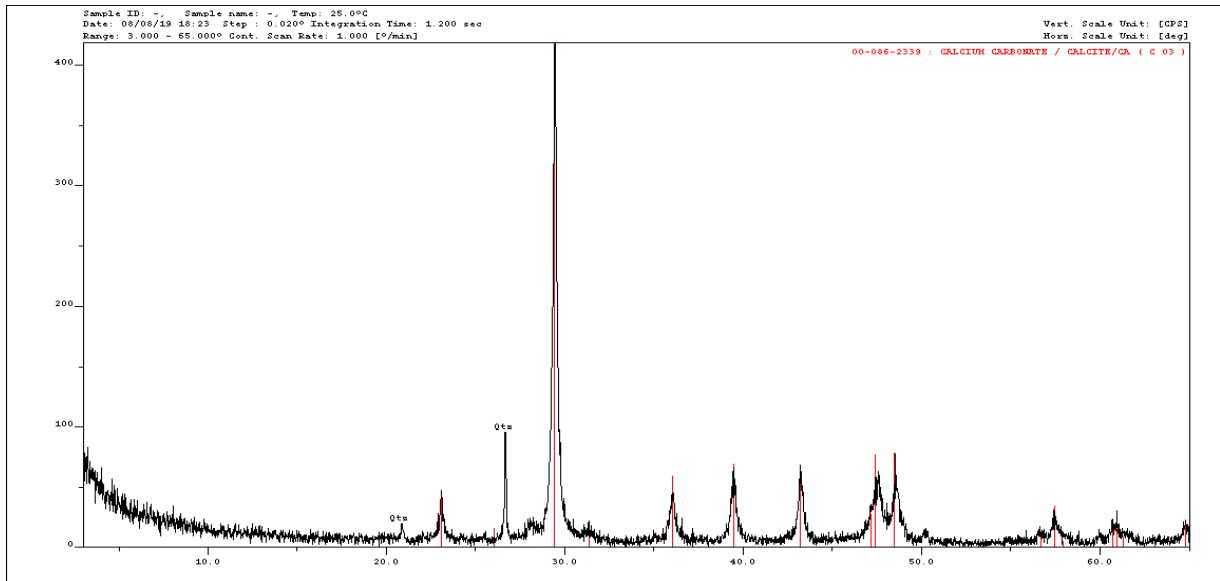
Part 1. Fukuzaki.



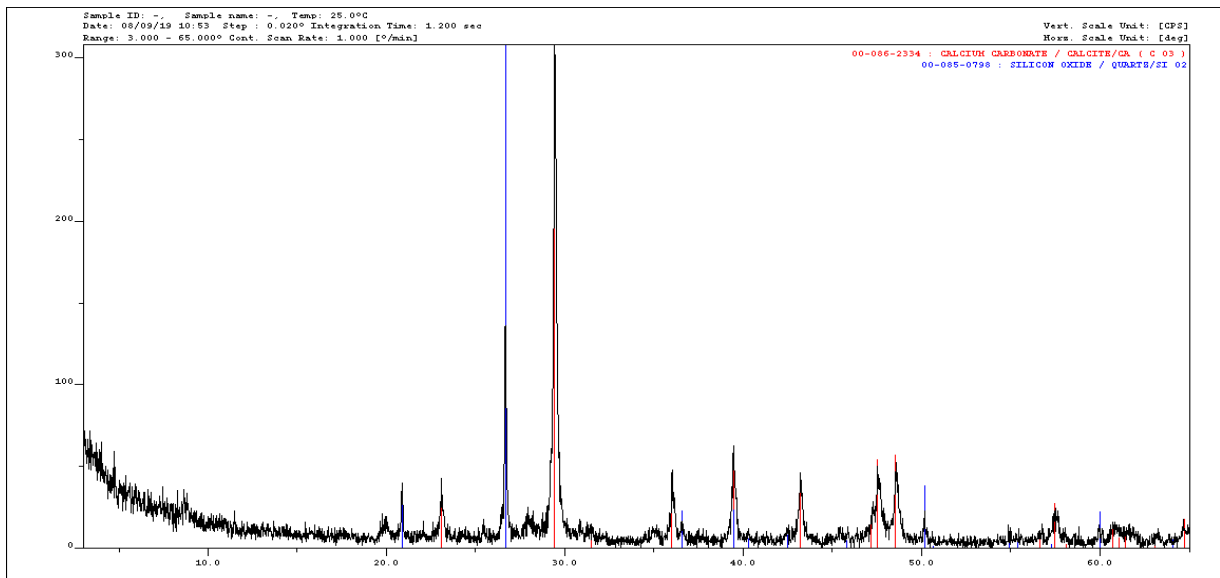
Supplementary Figure S1. Fukuzaki 1. Vein filling sparry cement.



Supplementary Figure S2. Fukuzaki 2. Recrystallized matrix with stylolite.

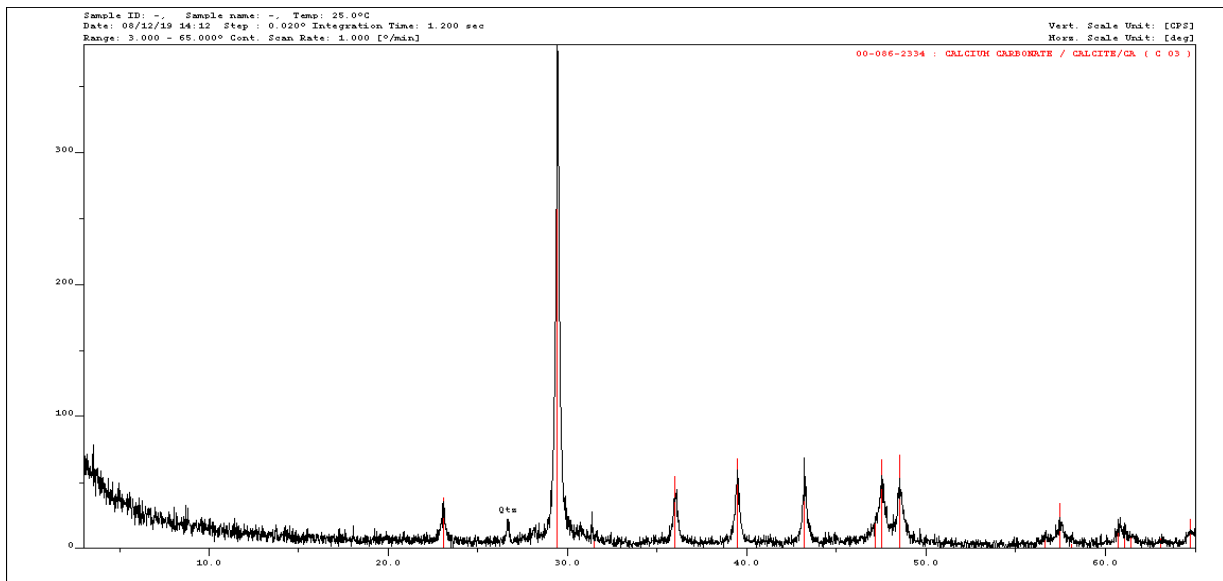


Supplementary Figure S3. Fukuzaki 3. Recrystallized matrix.

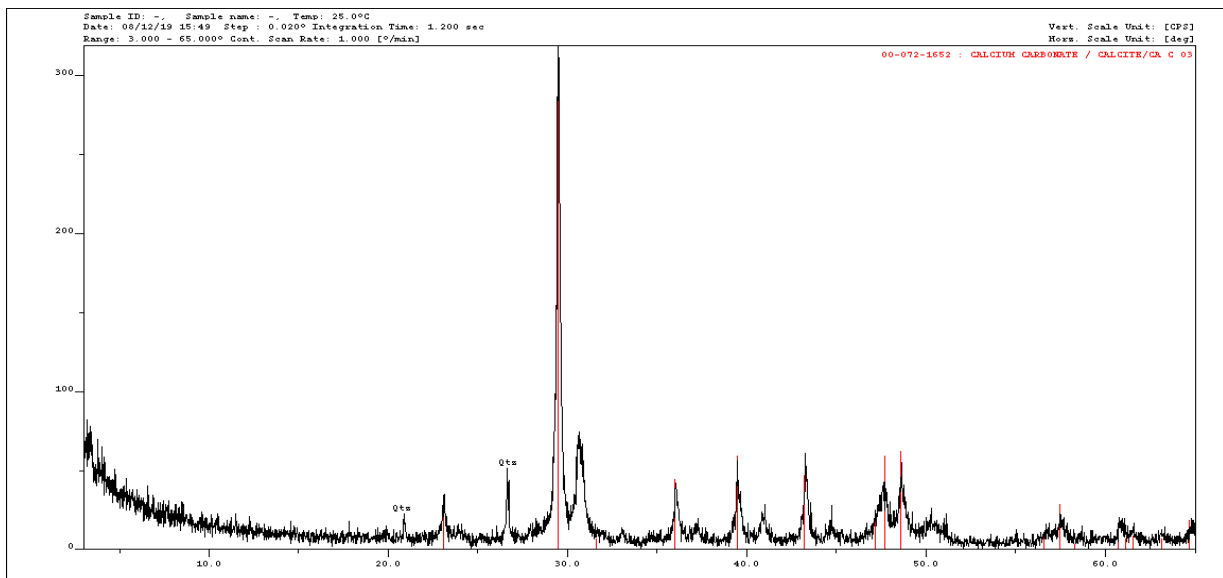


Supplementary Figure S4. Fukuzaki 4. Micritic matrix.

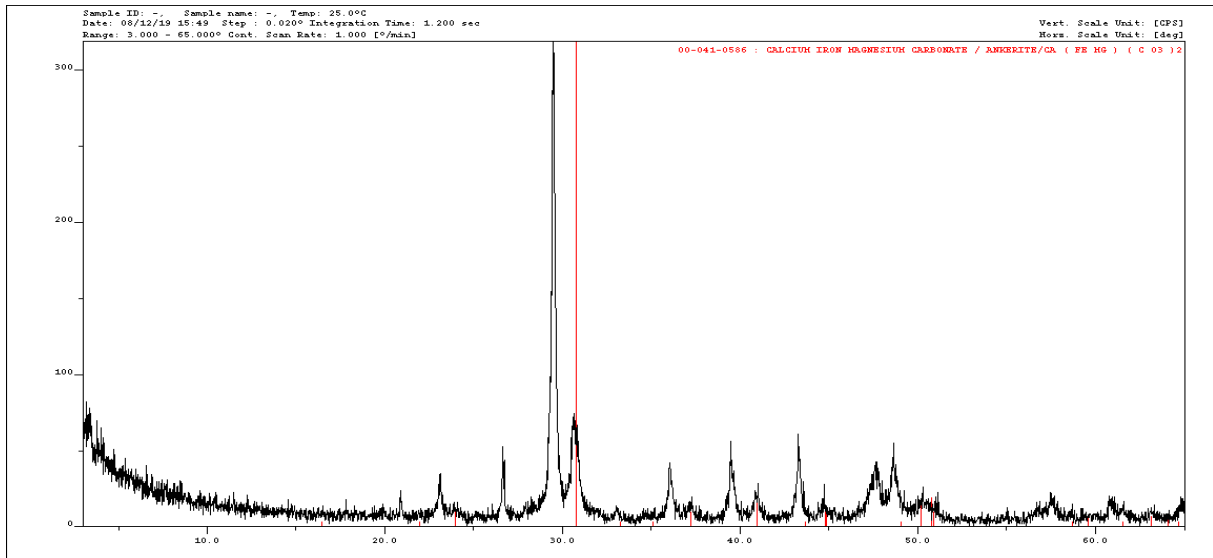
Part 2. Kanoura.



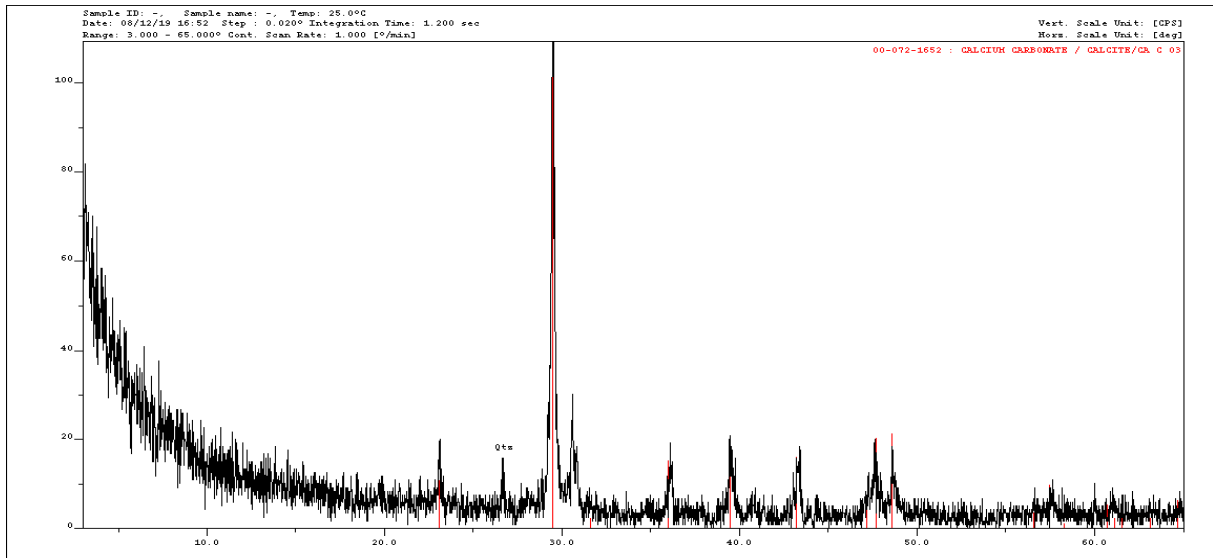
Supplementary Figure S5. Kanoura 1. Bivalve-filling radiaxial fibrous cement.



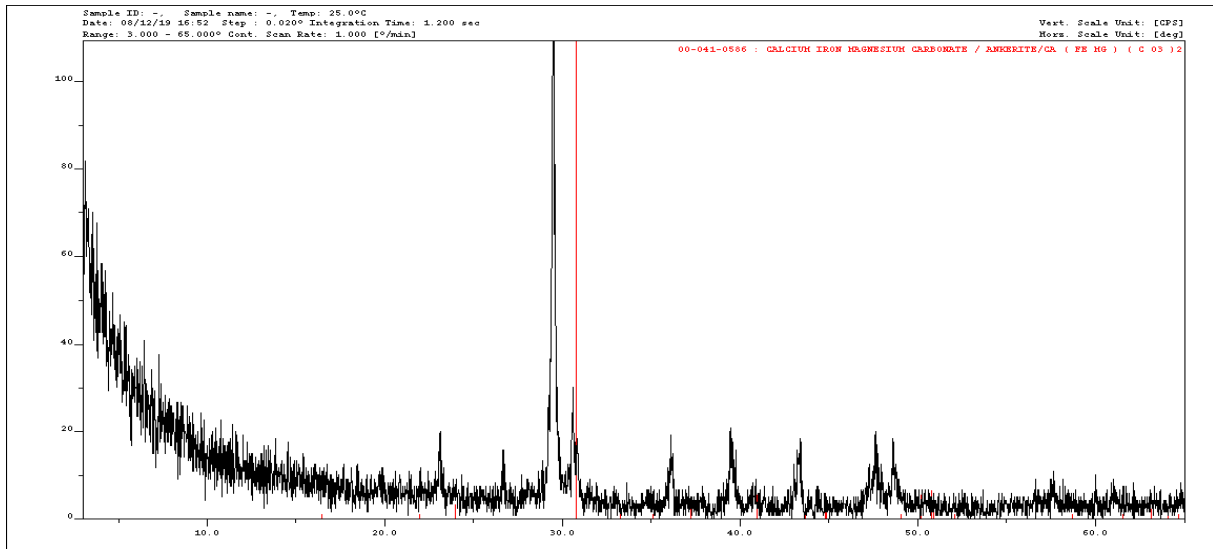
Supplementary Figure S6. Kanoura 2. . Bivalve-filling recrystallized matrix. Calcite peaks indicated.



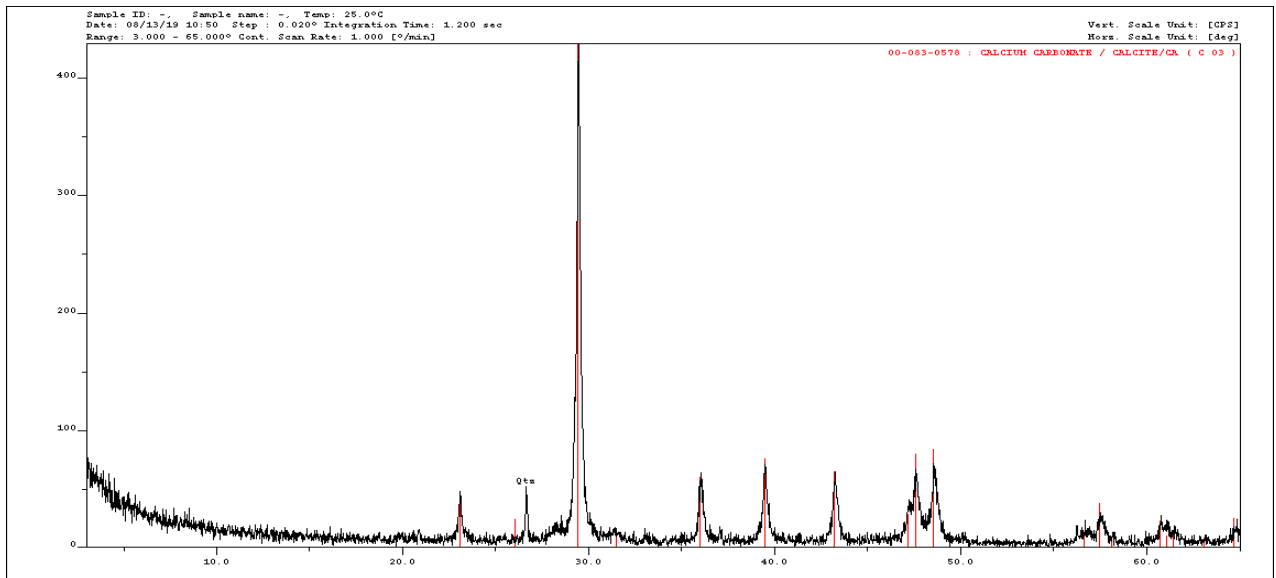
Supplementary Figure S7. Kanoura 2. Bivalve-filling recrystallized matrix. Ankerite peaks indicated.



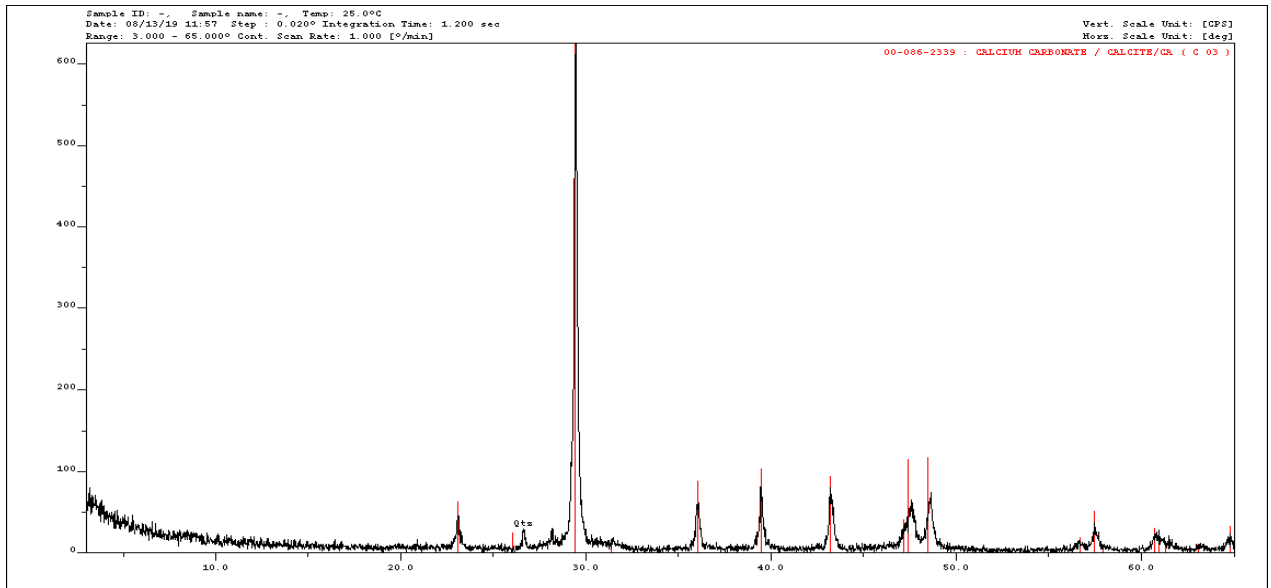
Supplementary Figure S8. Kanoura 3. Void filling recrystallized matrix. Calcite peaks indicated.



Supplementary Figure S9. Kanoura 3. Void filling recrystallized matrix. Ankerite peaks indicated.

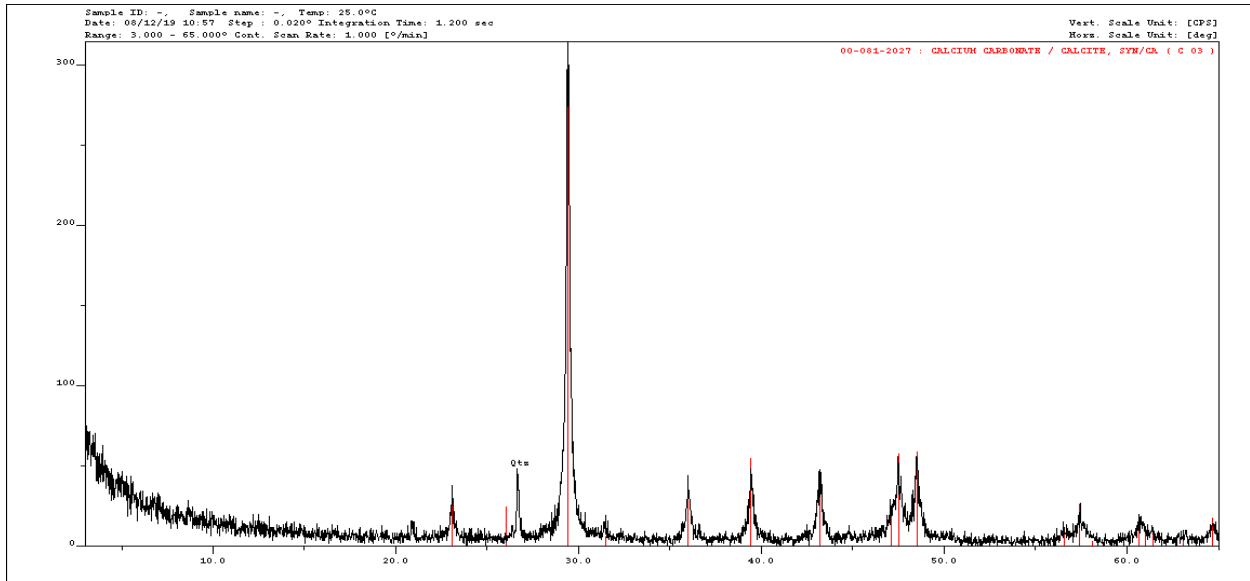


Supplementary Figure S10. Kanoura 4. Bivalve-filling recrystallized matrix 1.

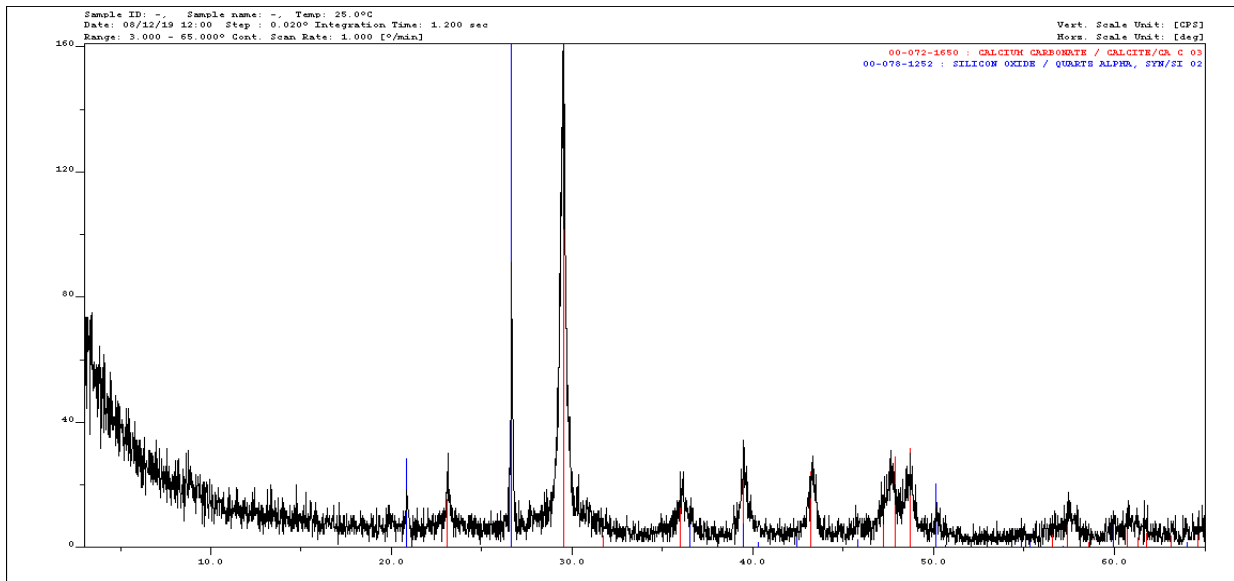


Supplementary Figure S11. Kanoura 5. Micritic matrix.

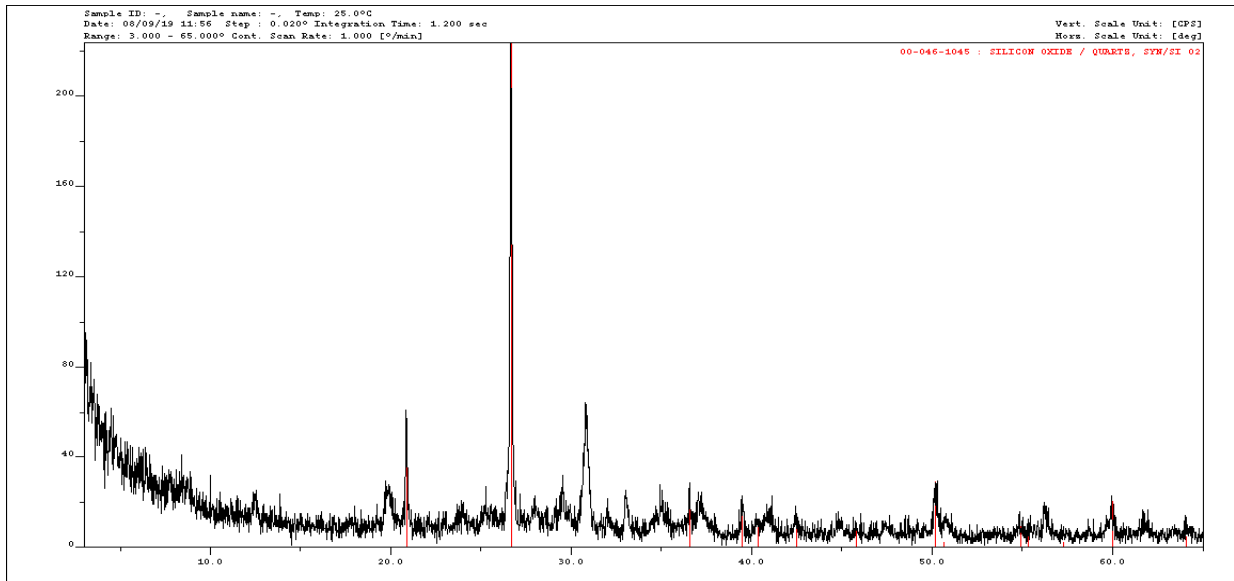
Part 3. Tanohama.



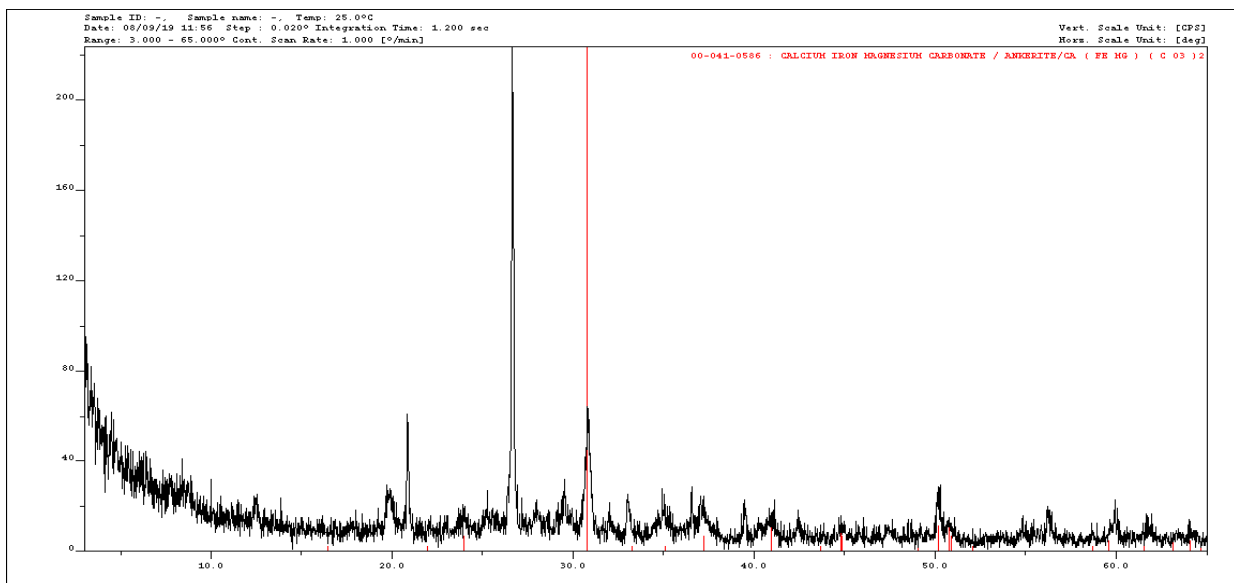
Supplementary Figure S12. Tanohama 1. Radial fibrous cement (void filling, concretionary facies).



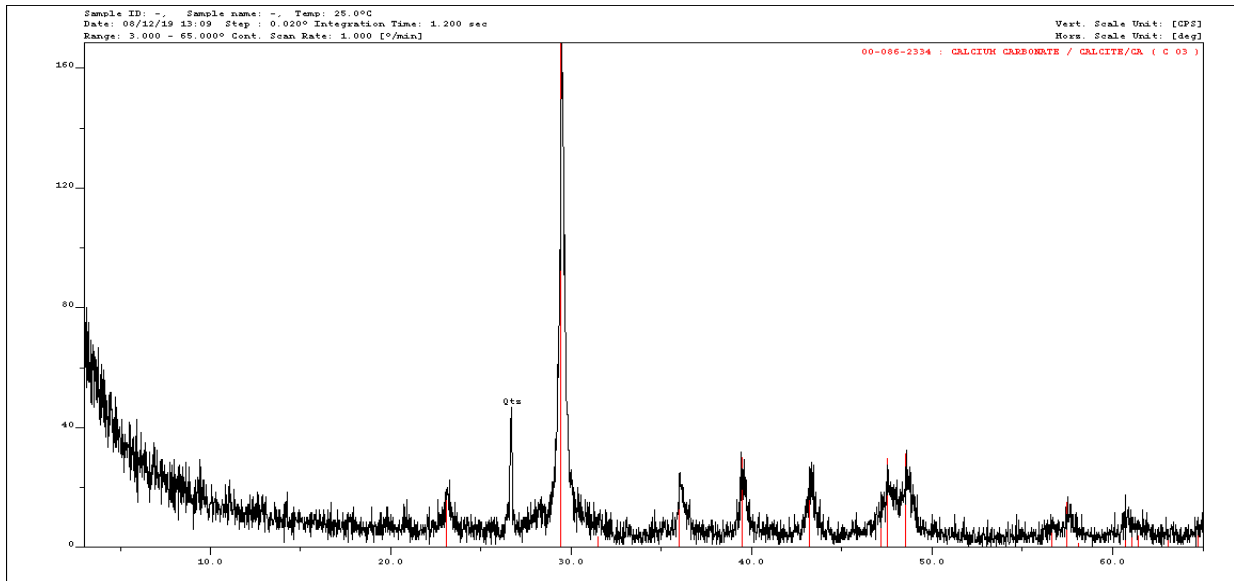
Supplementary Figure S13. Tanohama 2. Recrystallized matrix (concretionary facies).



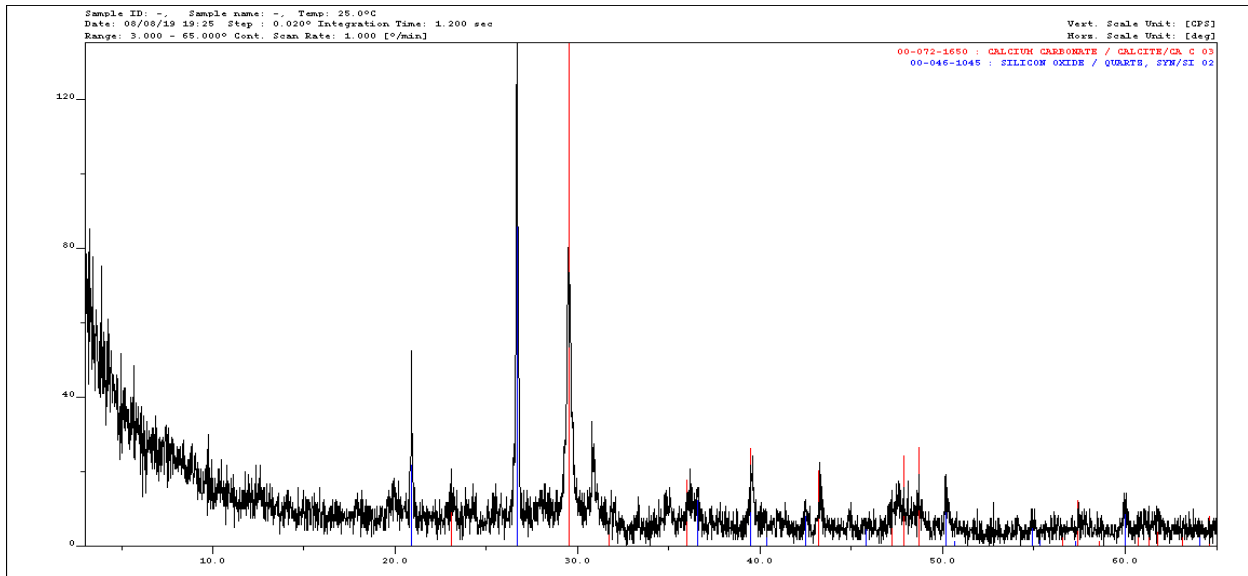
Supplementary Figure S14. Tanohama 3. Internal sediment (concretionary facies). Quartz peaks indicated.



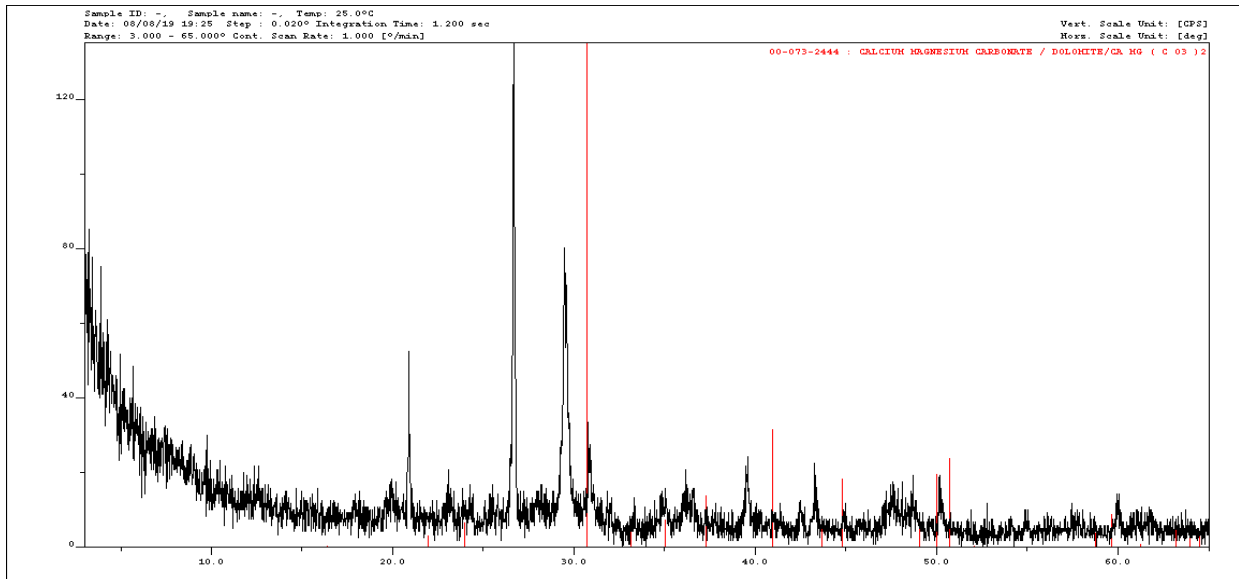
Supplementary Figure S15. Tanohama 3. Internal sediment (concretionary facies). Ankerite peaks indicated.



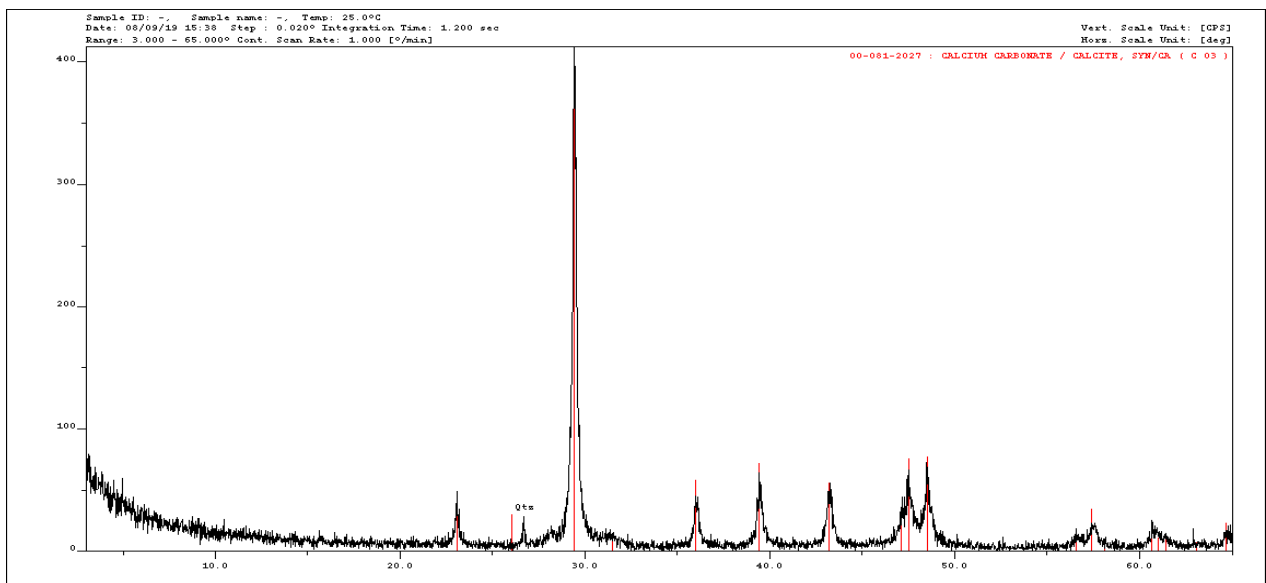
Supplementary Figure S16. Tanohama 4. Nodule (stromatolitic facies).



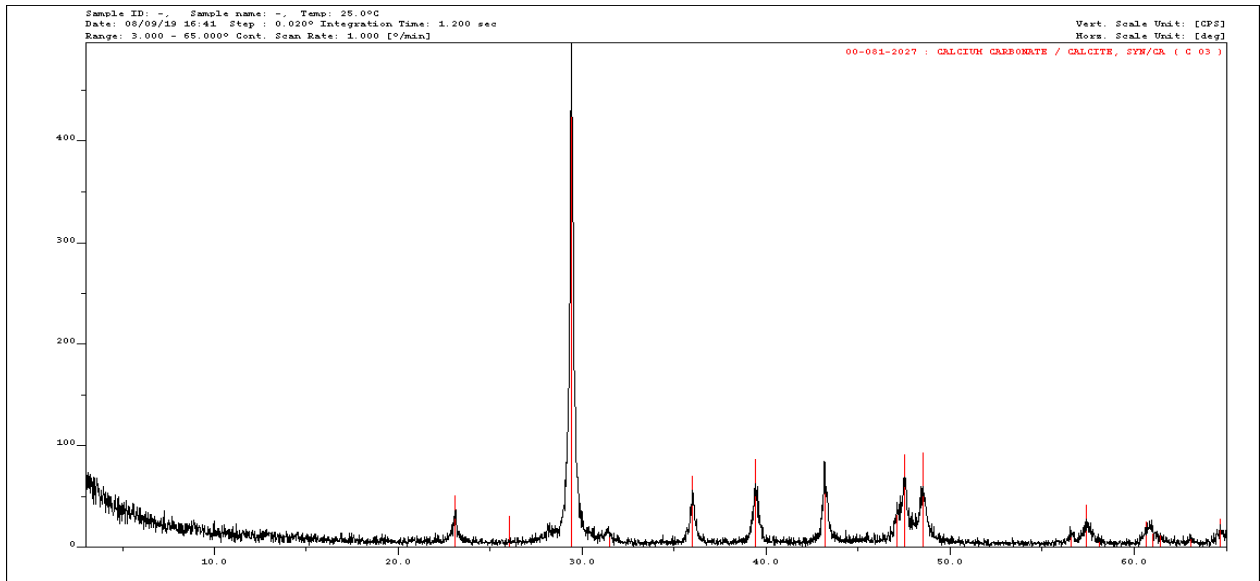
Supplementary Figure S17. Tanohama 5. Internal sediment (stromatolitic facies). Calcite and quartz peaks indicated.



Supplementary Figure S18. Tanohama 5. Tanohama 5. Internal sediment (stromatolitic facies). Dolomite peaks indicated.



Supplementary Figure S19. Tanohama 6. Base of stromatolitic crust (stromatolitic facies).



Supplementary Figure S20. Tanohama 7. Centre of stromatolitic crust (stromatolitic facies).