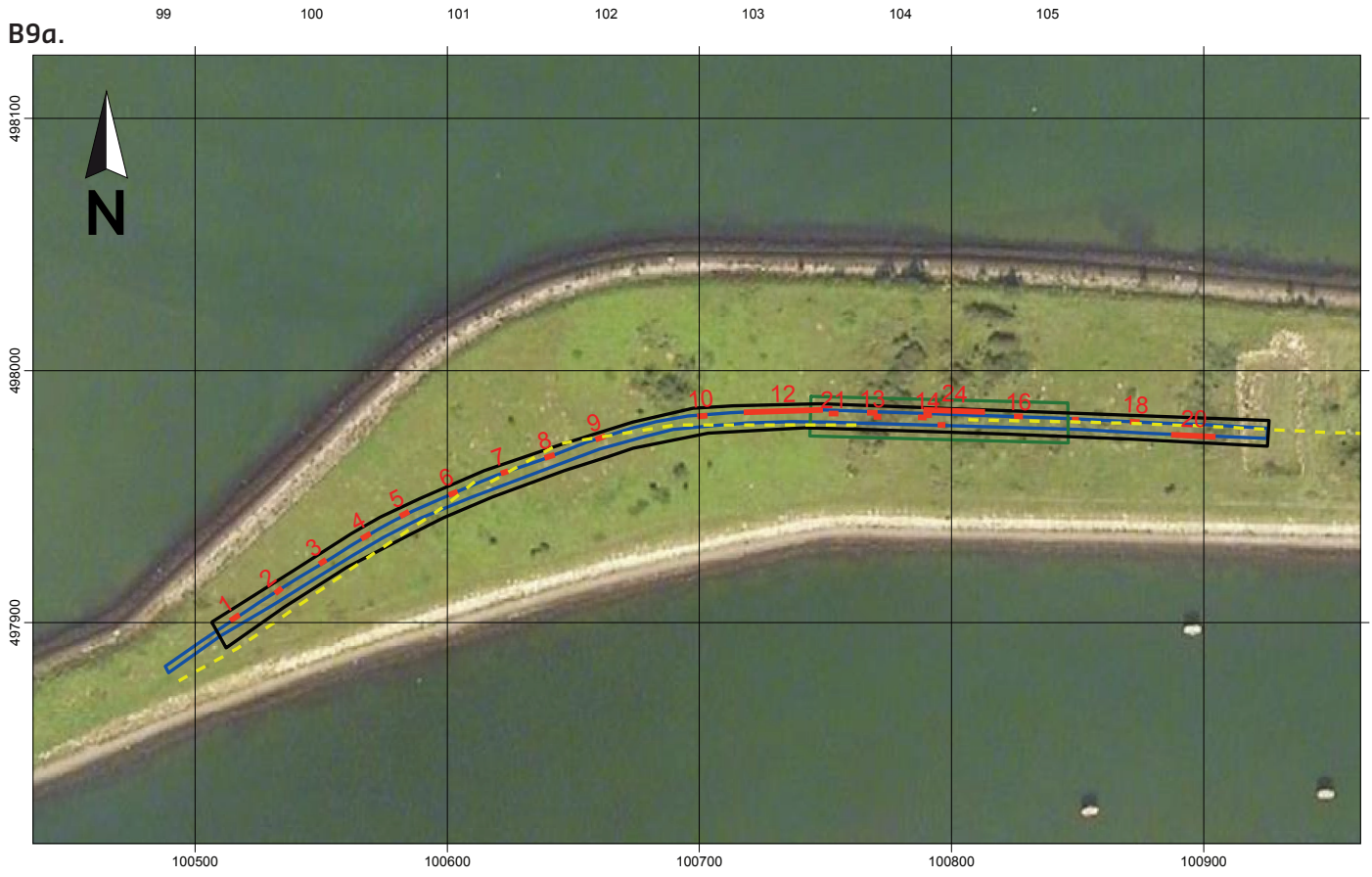
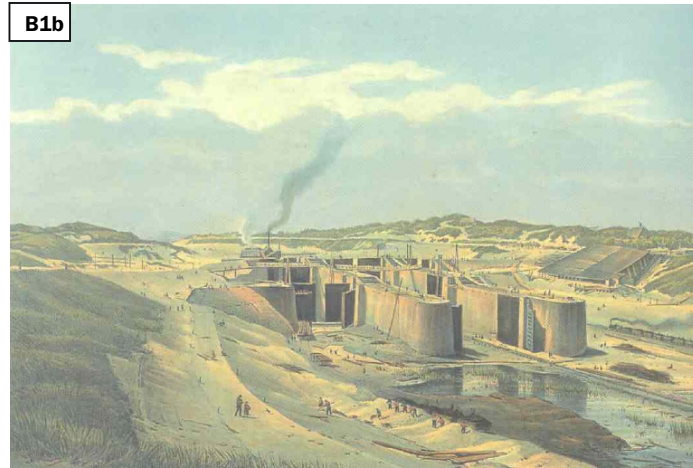


B9a.



 Trench pit 1    Trench pit 2    Trench pit 3    Georadar profile line    Location profile sections



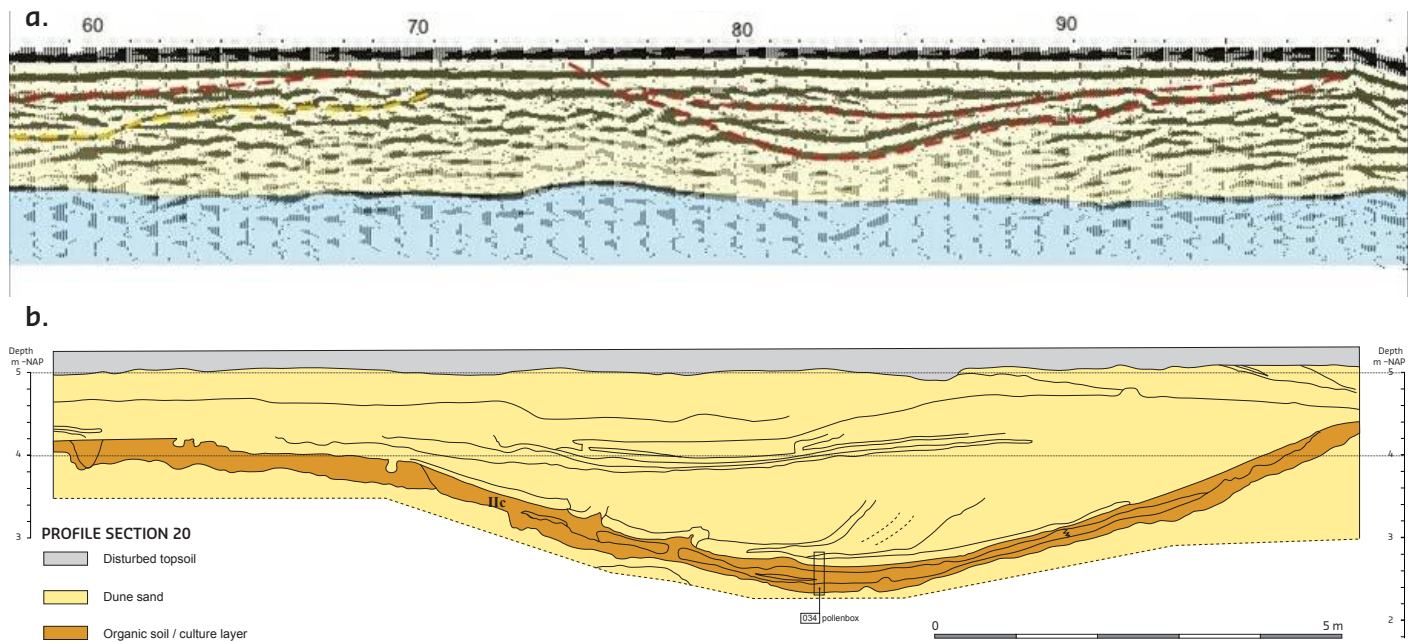


Fig. App. B9. Geoarchaeological survey at Middensluseiland (for profile reconstruction, see Fig. 3.2.14). Location (ME) is shown in Fig. App. B.

B9a: Location map of the geoarchaeological survey in December 2006.

B9b. Painting by J.C. Grieve (1876) of the construction of the sluices in IJmuiden. Middensluseiland is located at the position of the dune line behind the sluices under construction. The painting gives an impression of the dune landscape of Middensluseiland before the dune tops were leveled off in the early 20th century, when the sluice complex was enlarged.

B9c: Geoarchaeological survey at section 24. In the background, the Noordzeekanaal and the buildings of the Tata steel factory (formerly Hoogovens) are visible.

B9d: Cross-section of section 20 (at no vertical exaggeration), showing a bowl-shaped organic horizon following the surface of a former dune valley.

B9e: Georadar survey by Marcel Bakker (Geological Survey of the Netherlands - TNO).

B9f: Georadar survey and profile section 20.

a. Georadar survey from section 20 collected one week before the trench excavation. The dark reflections in the profile showed the dune valley in the image of B9f-b.

b. Drawing of the profile section 20.