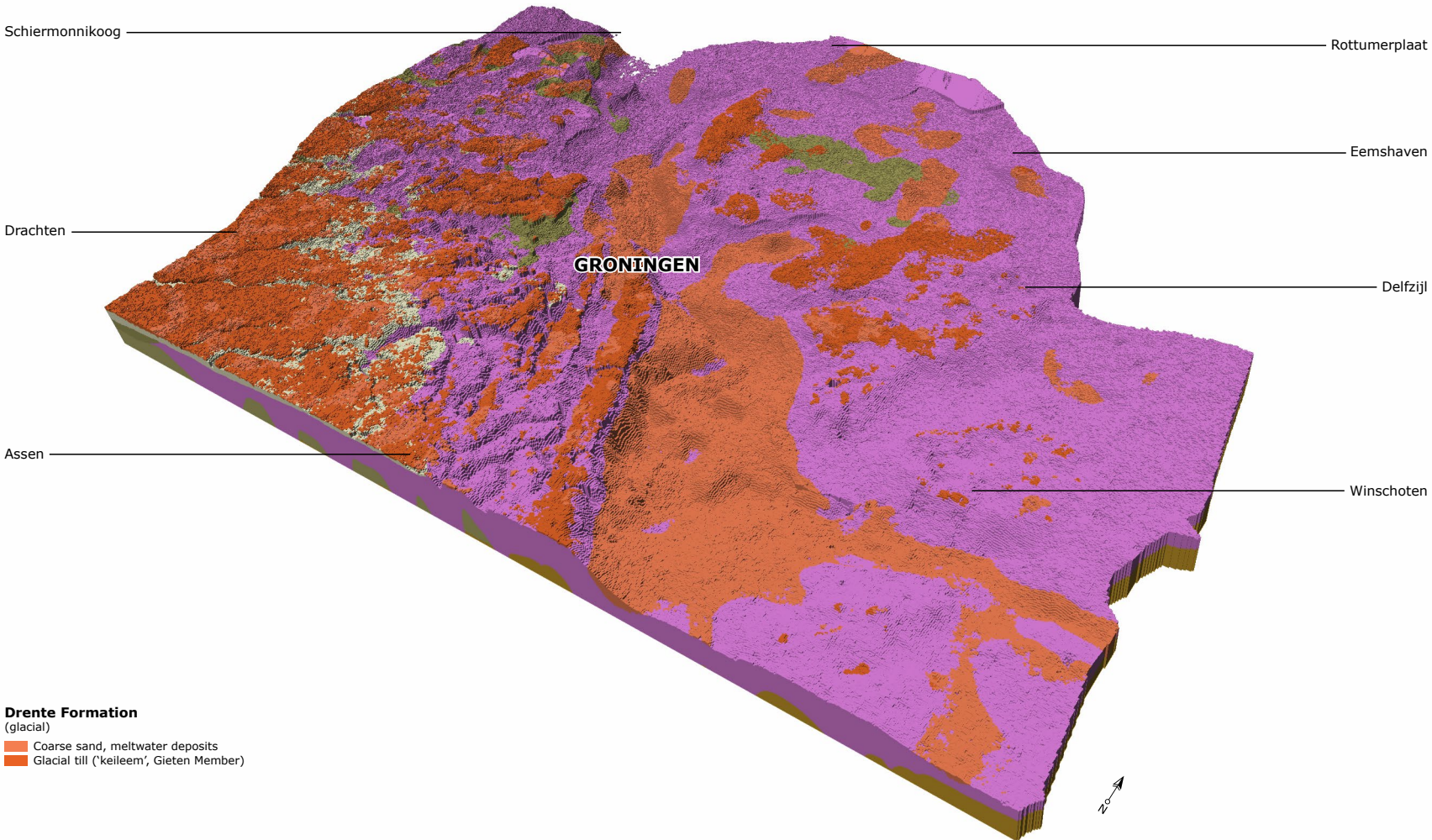


Peelo Formation
(glacial)
Fine and coarse sand, and clay – 'potklei'



Schiermonnikoog

Rottumerplaat

Eemshaven

Drachten

GRONINGEN

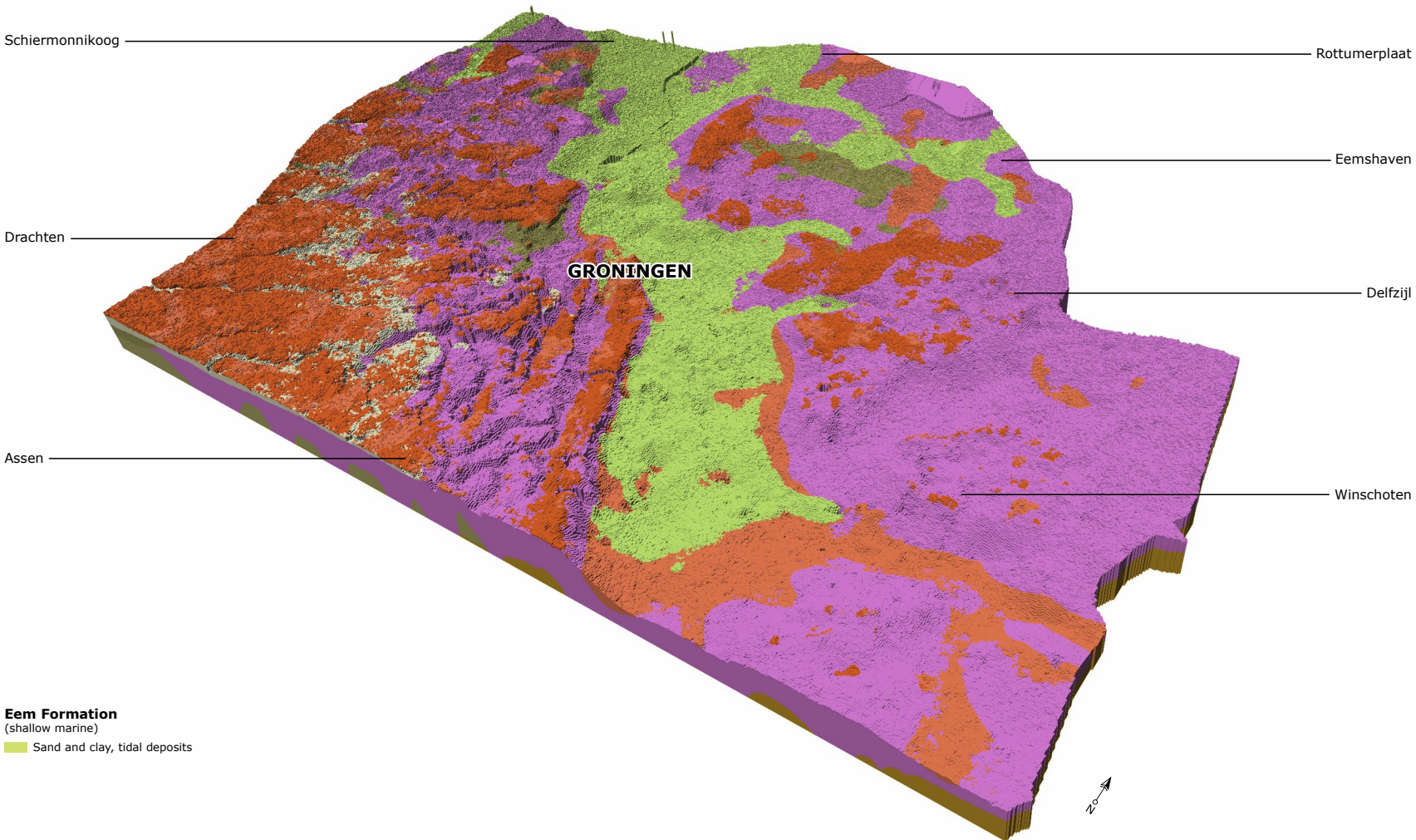
Delfzijl

Assen

Winschoten

Drenthe Formation

- (glacial)
- Coarse sand, meltwater deposits
- Glacial till ('keileem', Gieten Member)



Schiermonnikoog

Rottumerplaat

Eemshaven

Drachten

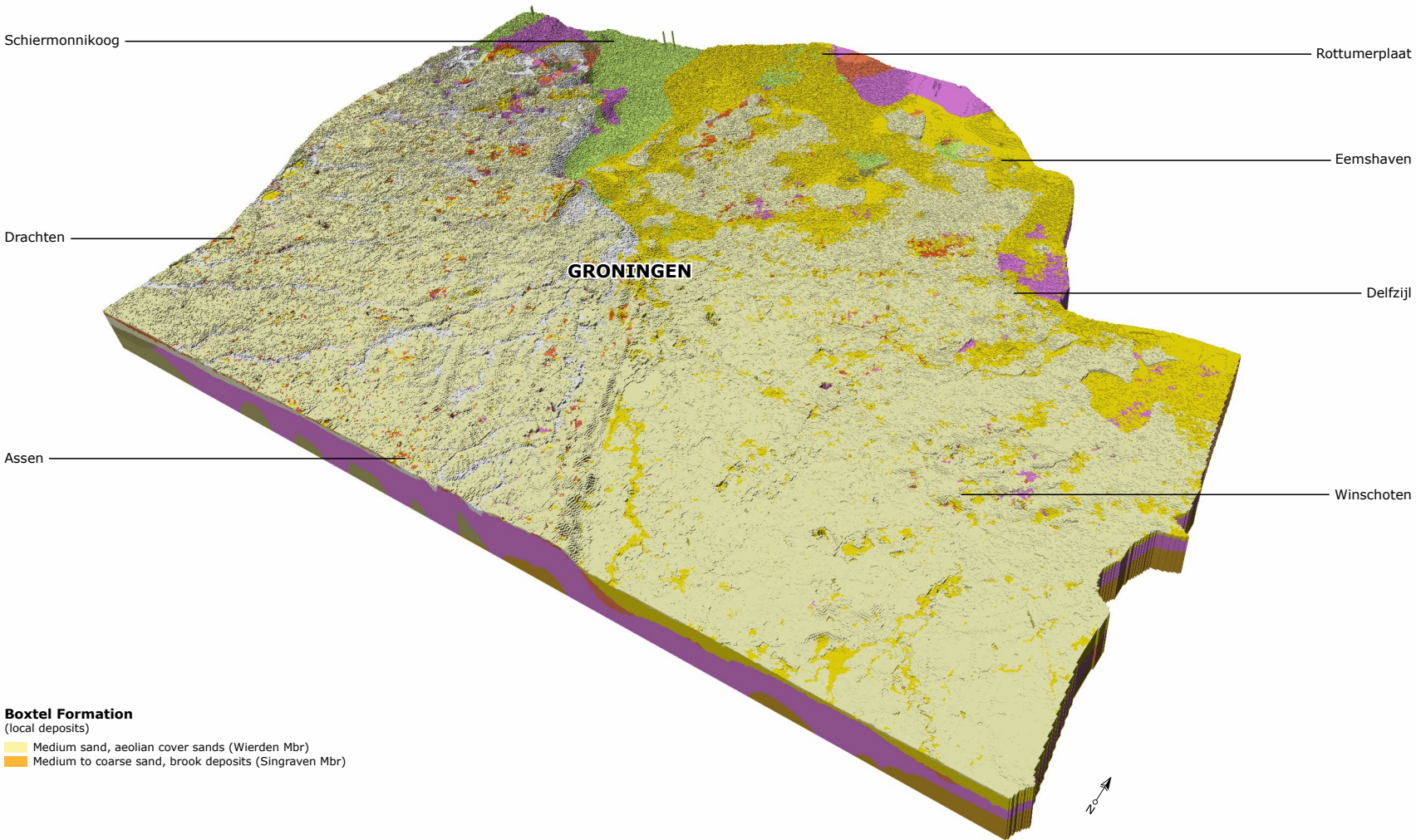
GRONINGEN

Delfzijl

Assen

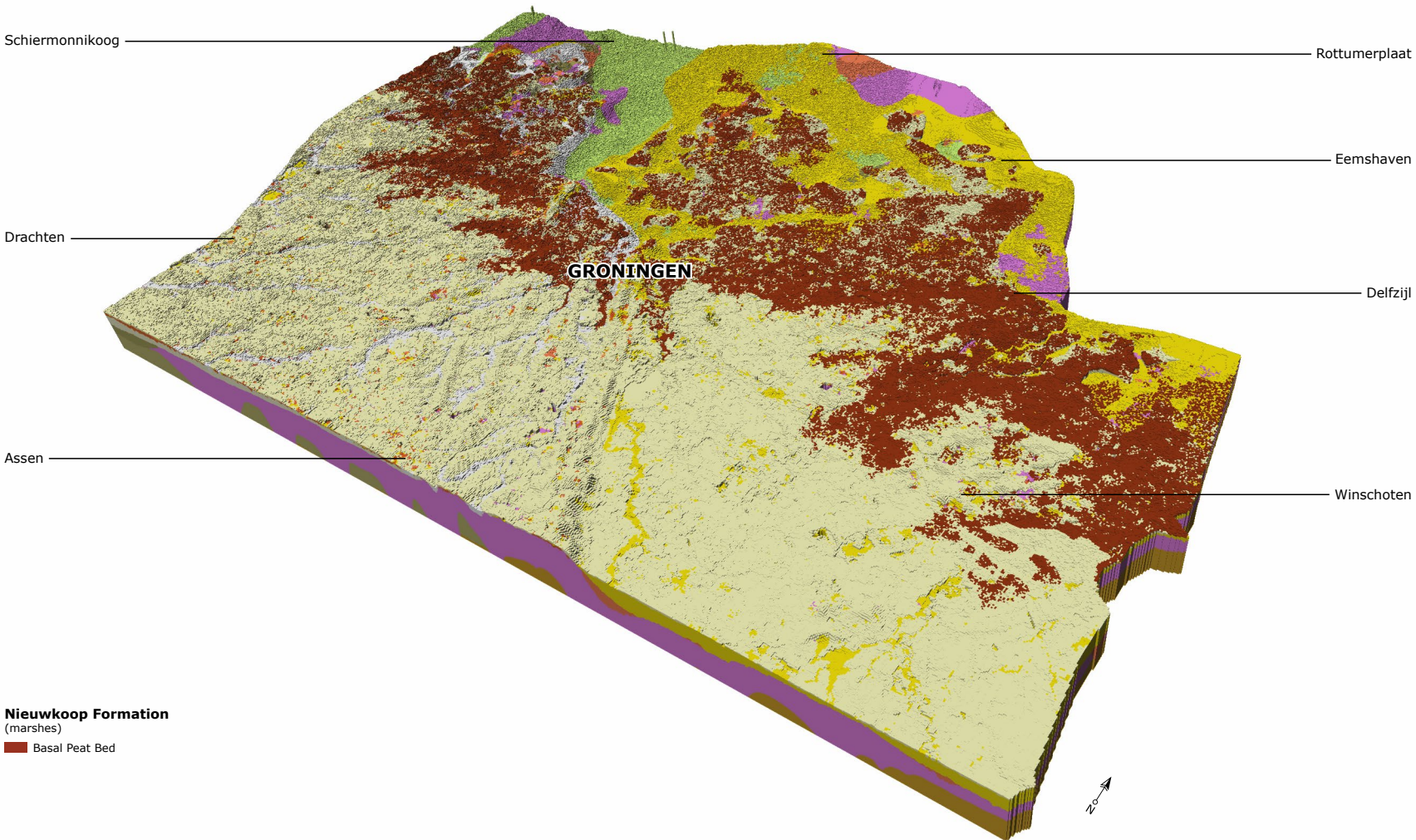
Winschoten

Eem Formation
(shallow marine)
Sand and clay, tidal deposits



Boxtel Formation

- (local deposits)
- Medium sand, aeolian cover sands (Wierden Mbr)
 - Medium to coarse sand, brook deposits (Singraven Mbr)



Schiermonnikoog

Rottumerplaat

Eemshaven

Drachten

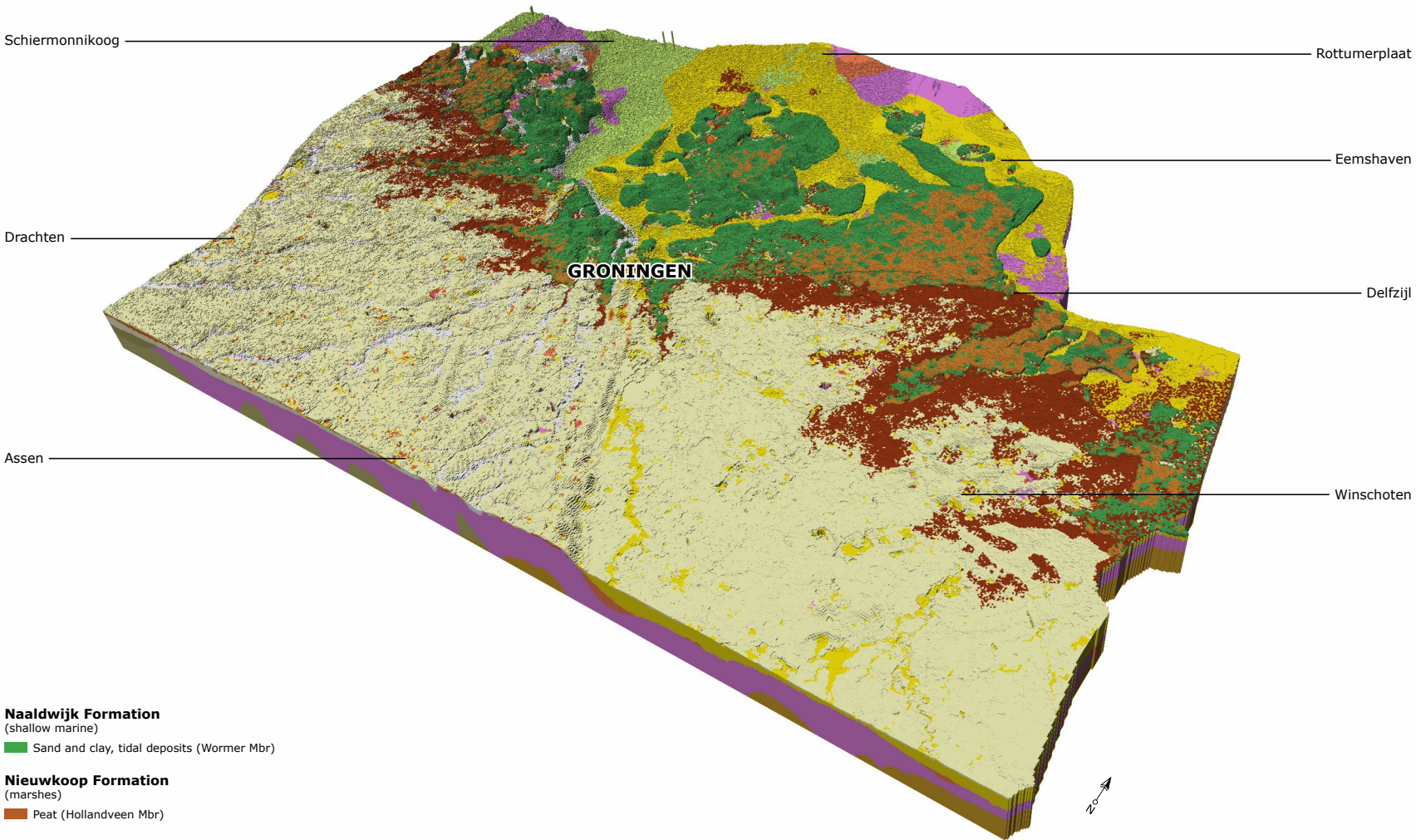
GRONINGEN

Delfzijl

Assen

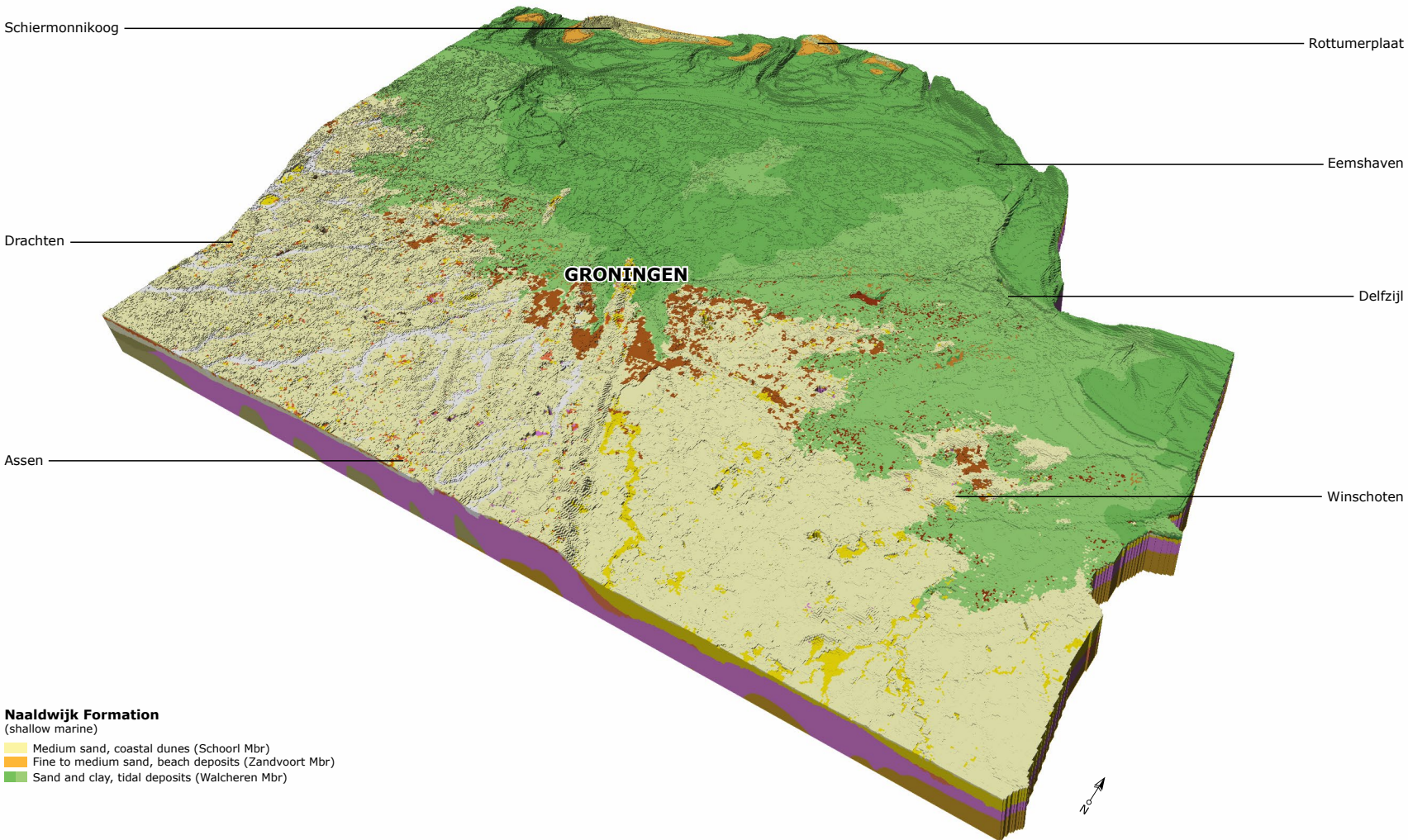
Winschoten

Nieuwkoop Formation
(marshes)
Basal Peat Bed



Naaldwijk Formation
(shallow marine)
■ Sand and clay, tidal deposits (Wormer Mbr)

Nieuwkoop Formation
(marshes)
■ Peat (Hollandveen Mbr)



Schiermonnikoog

Rottumerplaat

Eemshaven

Drachten

GRONINGEN

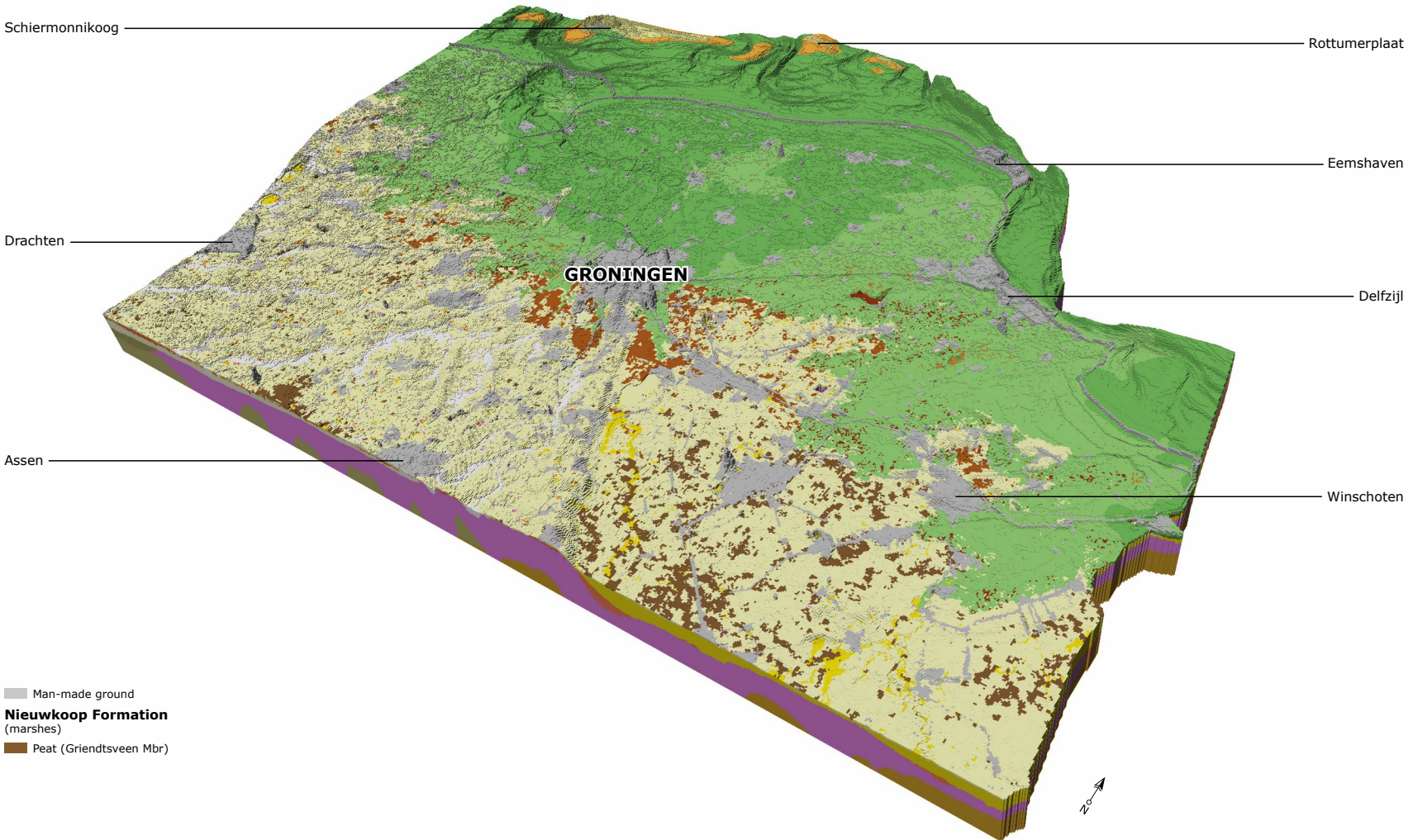
Delfzijl

Assen

Winschoten

Naaldwijk Formation

- (shallow marine)
- Medium sand, coastal dunes (Schoorl Mbr)
- Fine to medium sand, beach deposits (Zandvoort Mbr)
- Sand and clay, tidal deposits (Walcheren Mbr)



- Man-made ground
- Nieuwkoop Formation**
(marshes)
- Peat (Griendtsveen Mbr)