

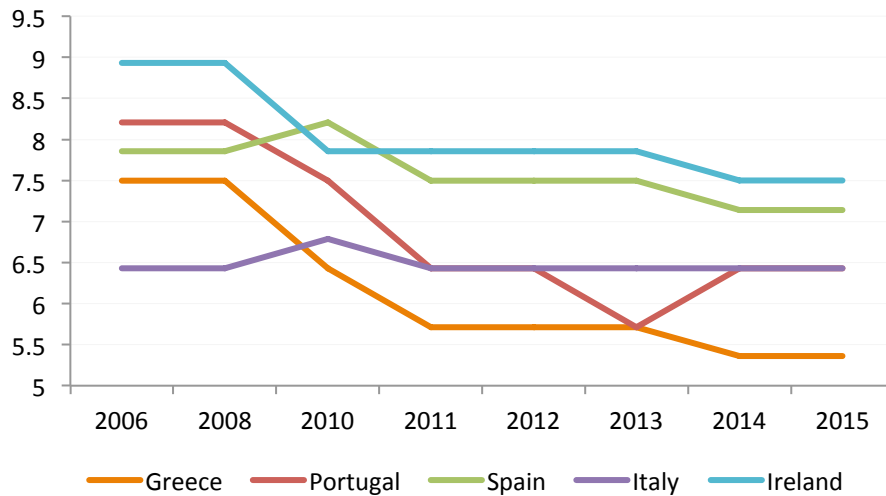
APPENDIX

“Integration At What Price? The Erosion of National Democracy in the Euro Periphery”

Matthias Matthijs

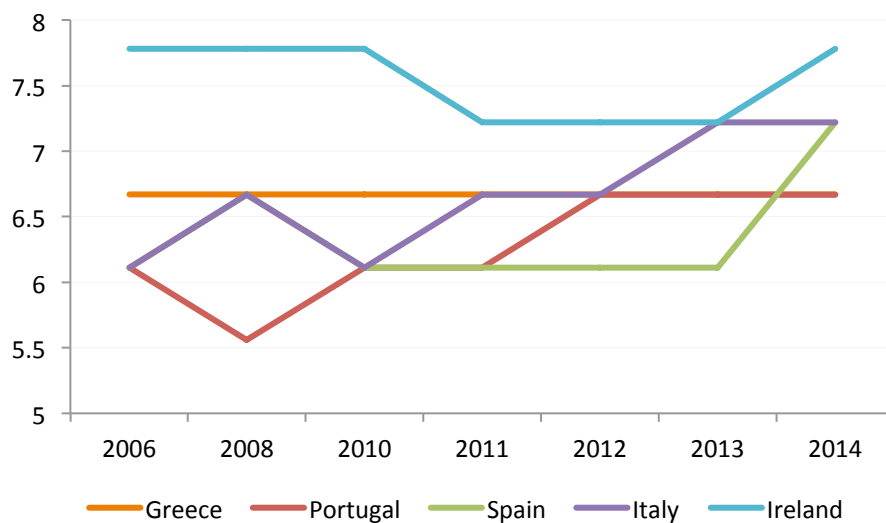
Government and Opposition, Special Issue “Democracy without Solidarity” (2017)

Figure A1: EIU Democracy Index: Functioning of Government



Source: Economist Intelligence Unit (2016), *Democracy Index* (2007, 2009, 2011, 2012, 2013, 2014, 2015)
(Online available: http://www.eiu.com/public/topical_report.aspx?campaignid=DemocracyIndex2015)

Figure A2: EIU Democracy Index: Political Participation



Source: Economist Intelligence Unit (2016), *Democracy Index* (2007, 2009, 2011, 2012, 2013, 2014, 2015)
(Online available: http://www.eiu.com/public/topical_report.aspx?campaignid=DemocracyIndex2015)

Table A1: Greece National Elections since 2008 (Total Seats: 300)

	2009	2012	2012	2015	2015
	(October)	(May)	(June)	(January)	(September)
Turnout	70.9%	65.1%	62.5%	63.6%	56.6%
PASOK left (%)	43.9	13.2	12.3	4.7	6.3
(seats)	160	41	33	13	17
ND right (%)	33.5	18.9	29.7	27.8	28.1
(seats)	91	108	129	76	75
Center (%)	77.4	32.1	42.0	32.5	34.4
(seats)	251	149	162	89	92
SYRIZA (%)	4.6	16.8	26.9	36.3	35.5
(seats)	13	52	71	149	145

Source: <http://www.electionresources.org/gr/>

Table A2: Spain General Elections since 2008 (Total Seats: 350)

	2008	2011	2015	2016
Turnout	73.9%	68.9%	73.2%	69.9%
PSOE left (%)	43.9	28.8	22	22.7
(seats)	169	110	90	85
PP right (%)	39.9	44.6	28.7	33.0
(seats)	154	186	123	137
Center (%)	83.8	73.4	50.7	55.7
(seats)	323	296	213	222
Podemos/UP (%)	-	-	20.7	21.1
(seats)	-	-	69	71
Ciudadanos (%)	-	-	13.9	13.1
(seats)	-	-	40	32

Source: <http://www.electionresources.org/es/>

Table A3: Irish General Elections since 2007
(Dáil: 166 seats/158 in '16)

	2007	2011	2016
Turnout	67%	70%	65.2%
Fianna Fáil (%)	41.6	17.4	24.3
(seats)	77	20	44
Fine Gael (%)	27.3	36.1	25.5
(seats)	51	76	50
Center (%)	68.9	53.5	49.8
(seats)	128	96	94
Labour Party (%)	10.1	19.4	6.6
(seats)	20	37	7
Sinn Féin (%)	6.9	9.9	13.8
(seats)	5	14	23

Source: <http://www.electionresources.org/ie/>

Table A4: Italy General Elections since 2008
(Chamber of Deputies (C): 630 seats; Senate (S): 315 seats)

	2008	2013
Turnout	80.5%	75.2%
Democratic Party (Center-Left) (%)	33.5	29.5
(seats)	(C: 246, S: 134)	(C: 345, S: 123)
People of Freedom (Center-Right) (%)	46.8	29.1
(seats)	(C: 344, S: 174)	(C: 125, S: 117)
Center (%)	80.3	58.6
(seats)	(C: 590, S: 308)	(C: 470, S: 240)
Five Star Movement (%)	-	25.5
(seats)	-	(C: 109, S: 54)

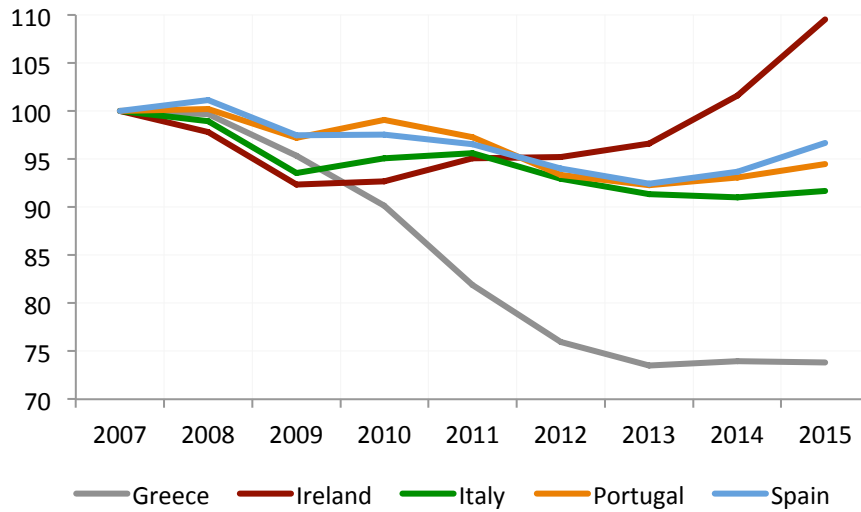
Source: <http://www.electionresources.org/it/>

Table A5: Portugal General Elections since 2008 (Total Seats: 230)

	2009	2011	2015
Turnout	60.5%	58.9%	55.8%
PS center-left (%)	36.6	28.0	32.3
(seats)	96	74	86
PPD/PSD center-right (%)	29.1	38.7	38.6
(seats)	78	108	107
CDS-PP center-right (%)	10.5	11.7	-
(seats)	21	24	-
Center (%)	76.2	78.4	70.9
(seats)	195	206	193
BE (hard left) (%)	9.8	5.2	10.2
(seats)	16	8	19
CDU (communist) (%)	7.9	7.9	8.3
(seats)	15	16	17

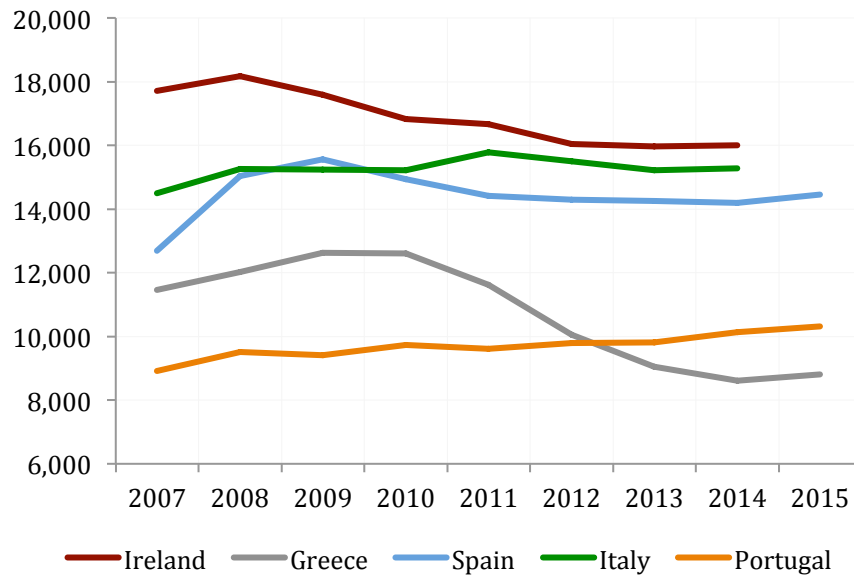
Source: <http://www.electionresources.org/pt/>

Figure A3: Change in Real GDP (2007 = 100)



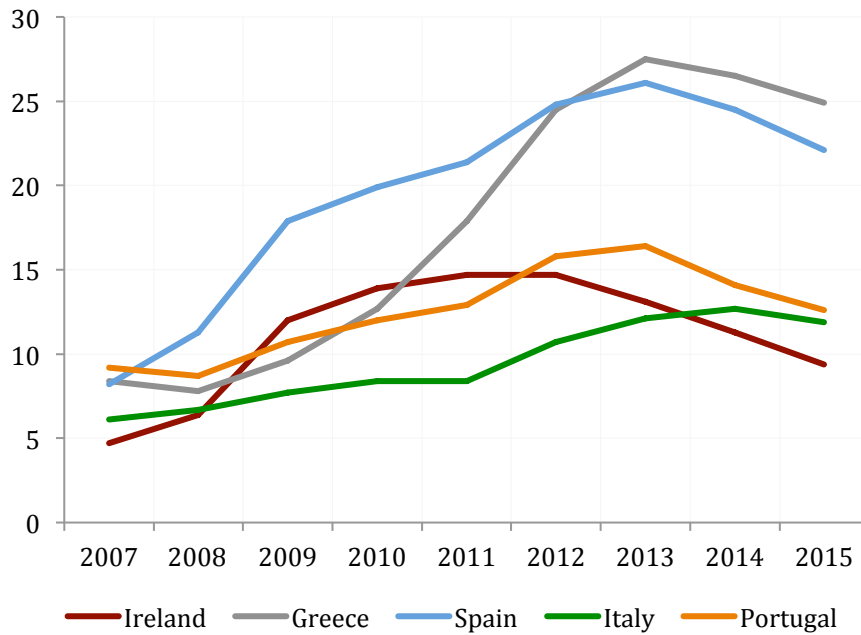
Source: IMF (2016), *World Economic Outlook Database* (Washington, DC), and author's calculations.

Figure A4: Median Equalized Net Income (PPP, euros)



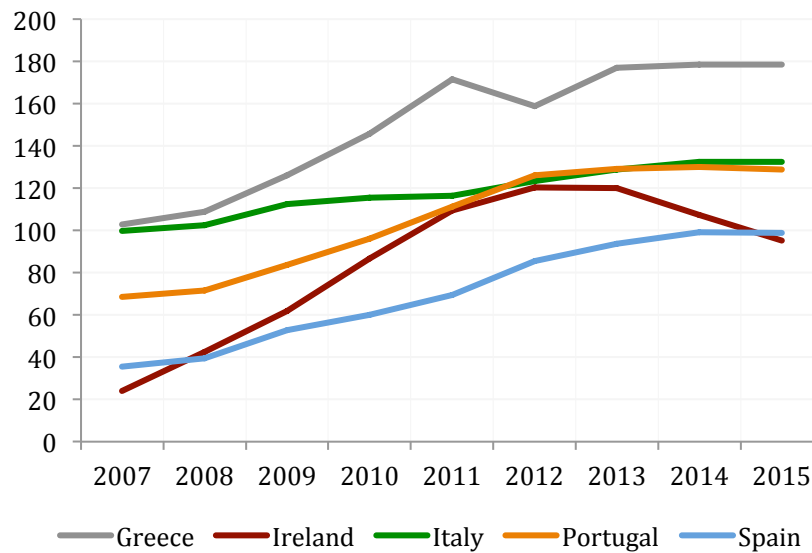
Source: European Commission (2016), *Ameco Database*, and author's calculations.

Figure A5: Unemployment Rate



Source: European Commission (2016), *Ameco* Database, and author's calculations.

Figure A6: Evolution of General Government Debt (2007-15)



Source: IMF (2016), *World Economic Outlook* Database (Washington, DC), and author's calculations.