

**Metabolomic analysis of alterations in lipid oxidation, carbohydrate
and amino acid metabolism in dairy goats caused by exposure to
Aflatoxin B1**

Jianbo Cheng^{1,2#}, Shuai Huang^{1#}, Caiyun Fan¹, Nan Zheng^{2,3}, Yangdong Zhang^{2,3},
Songli Li^{2,3}, Jiaqi Wang^{2,3*}

¹ College of Animal Science and Technology, Anhui Agricultural University, Hefei
230036, P. R. China

² State Key Laboratory of Animal Nutrition, Institute of Animal Science, Chinese
Academy of Agricultural Sciences, Beijing 100193, P. R. China

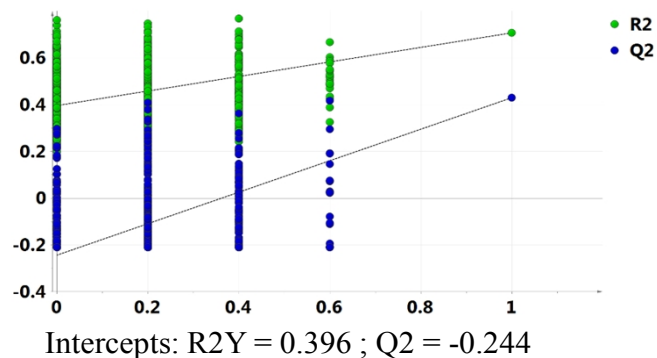
³ Ministry of Agriculture-Milk Risk Assessment Laboratory, Institute of Animal
Sciences, Chinese Academy of Agricultural Sciences, Beijing 100193, P. R. China

Short title: Metabolomic study of dairy goats exposed to aflatoxin B1

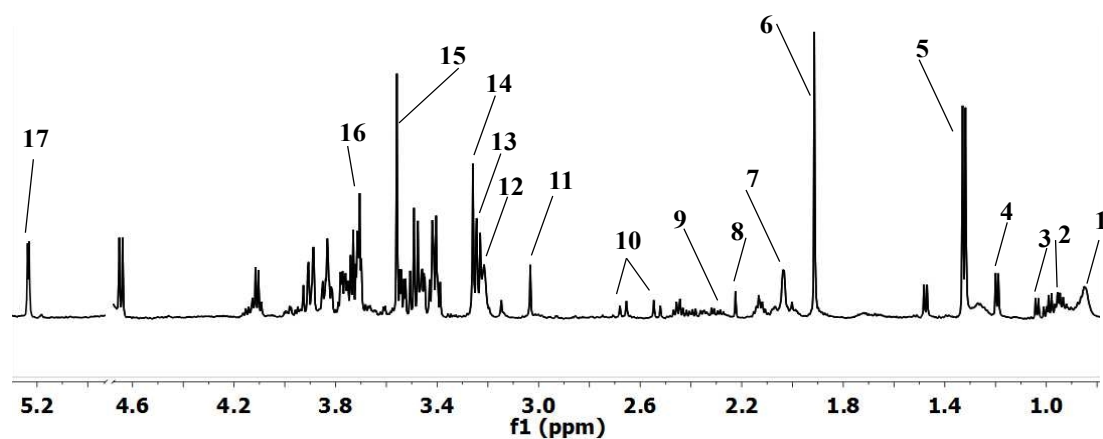
#These authors contributed equally to this work.

*Corresponding author: E-mail: chengjianboahau@163.com

Supplementary File



Supplementary Fig. S1. Validation plots of the partial least squares discriminant analysis (PLS-DA) models acquired through 999 permutation tests for the ^1H NMR data of serum metabolome.



Supplementary Fig. S2. Assignment of identified candidate metabolites into ^1H CPMG NMR spectra. 1, lipoprotein; 2, leucine/isoleucine; 3, valine; 4, β -hydroxybutyrate; 5, lactate; 6, acetate; 7, Nacetyl glycoproteins; 8, acetone; 9, acetoacetate; 10, citrate; 11, creatine; 12, choline; 13, PC/GPC; 14, betaine; 15, glycine; 16, citrulline; 17, glucose.