

1 **Vouraki *et al***

2 **Risk factors of teat-end hyperkeratosis and its association with udder health in**
3 **dairy ewes**

4 **Supplementary file**

5

6 **Table S1.** Milking parlour characteristics of the studied flocks.

7

Type	No. of flocks	No. of stalls	No. of milking units
Single-sided	2	12	6
	1	12	12
	1	18	18
	13	24	12
	2	24	24
	1	32	16
	1	36	18
Double-sided	1	32	16
	1	36	18
	2	48	24
	1	48	48
	2	64	32

8

9 **Table S2.** Means, standard deviations (SD), Minimum (Min) and Maximum (Max)
10 values of continuous variables (number of ewes/milker, number of ewes/milking unit,
11 number of milking units/milker and number of milkings/milking unit) in the studied
12 flocks.

13

	Mean	SD	Min	Max
No. of ewes/milker	106.0	51.69	40.0	218.0
No. of milking units/milker	8.6	3.74	3.0	16.0
No. of ewes/milking unit	14.6	8.47	3.0	36.0
No. of milkings/milking unit	14,297.5	10,038.17	1,224.0	39,168.0

14

15

16

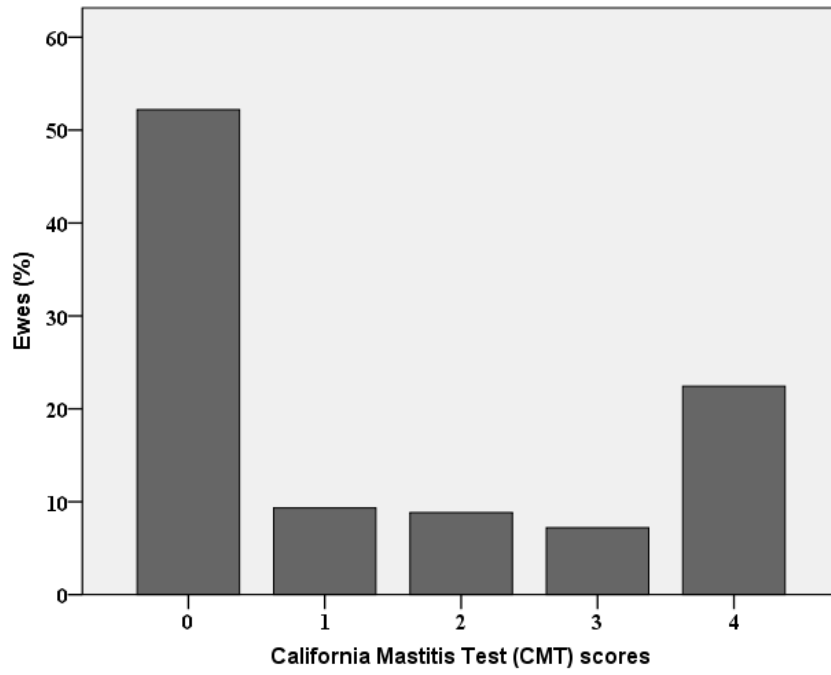
17 **Table S3.** Number of studied farms performing good milking procedures.

Milking procedures	No. of farms
Use of gloves by milkers	7
Pre-stripping	1
Cluster removal after vacuum cessation	3
Post-milking disinfection	4

18

19 **Figure S1.** Frequency (%) of California Mastitis Test (CMT) scores in the studied
20 ewe population.

21



22

23

24

25

26

27

28