

1 **Persistence of coagulase negative staphylococcal intramammary infections in dairy goats**

2

3 Véronique Bernier Gosselin, Simon Dufour, Pamela R. F. Adkins and John R. Middleton

4

5 SUPPLEMENTARY FILE

6

7

8

9 Supplementary Figure Legends

10

11 Supplementary Figure S1. Flowchart of udder-halves included in the data analyses for the
12 relationship between intramammary infection (IMI) status and somatic cell score (SCS). Only
13 halves that had a coagulase negative staphylococci (CNS) IMI on Day 0 and culture results on
14 Days 37 and 61 with species identification, and strain type where applicable, were eligible.

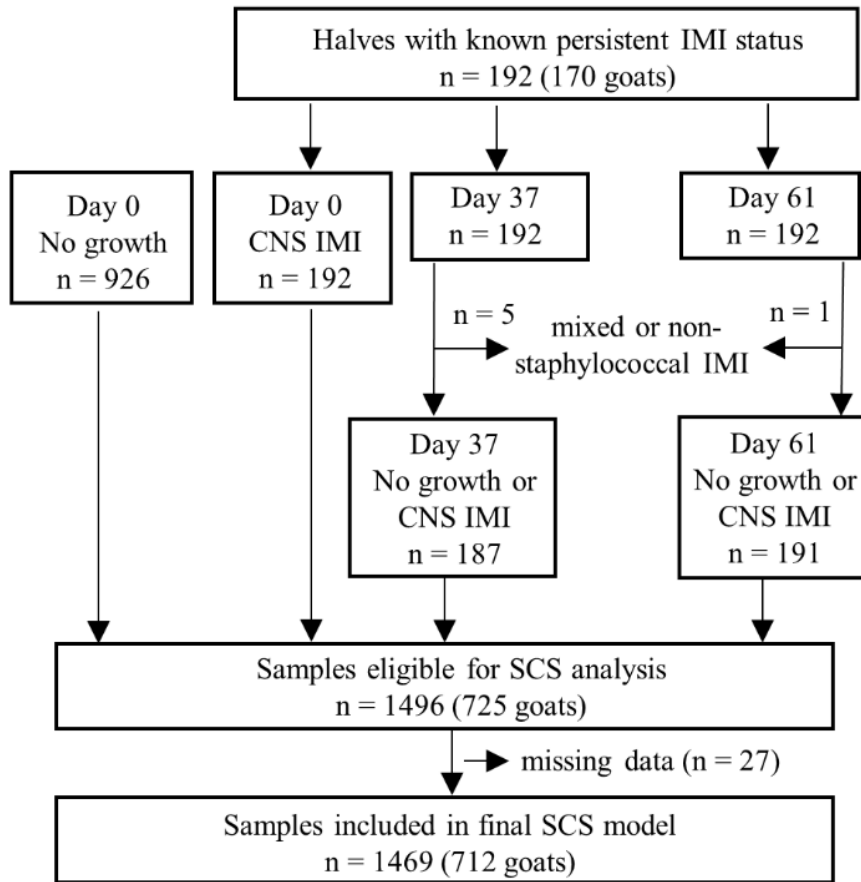
15

16 Supplementary Figure S2. Flowchart of udder-halves included in the data analyses for
17 determining the odds of an intramammary infection (IMI) persisting. CNS = coagulase negative
18 staphylococci; PFGE = pulsed-field gel electrophoresis; ID = identification.

19

20

21 Figure S1.

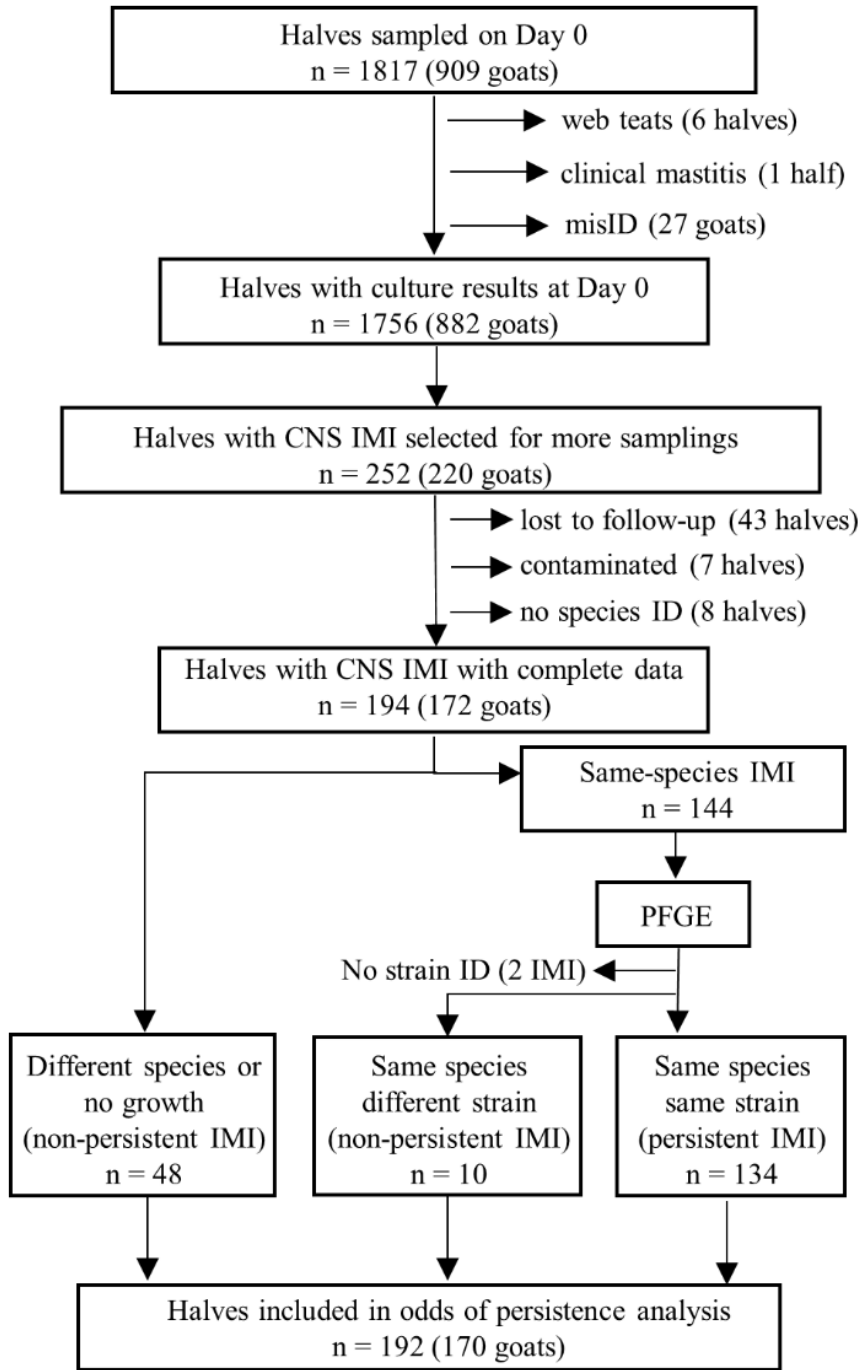


22

23

24

25 Figure S2.



26

27

28