

1 Occurrence and etiology of subclinical mastitis in water buffalo in Bangladesh

2
3 Shuvo Singha^{1,2,4}, Carl David Ericsson³, Salma Chowdhury⁴, Sanjib Chandra Nath⁴, Ovirup
4 Bhushan Paul⁴, Md. Ahasanul Hoque⁴, Sofia Boqvist³, Ylva Persson⁵ and Md. Mizanur
5 Rahman⁴

8 SUPPLEMENTARY FILE

9
10 **Supplementary Table S1.** List of individual farm with total number of buffaloes and
11 quarters tested for detection of subclinical mastitis using CMT in Bagerhat and
12 Noakhali region of Bangladesh
13
14
15

FID	Housing system	Total buffaloes	Numbers of lactating buffaloes	Numbers of buffaloes tested	Numbers of quarters tested
1	Semi-intensive	487	66	50	195
2	Household	7	2	2	8
3	Bathan	6	1	1	4
4	Semi-intensive	41	7	7	28
5	Household	5	2	1	4
6	Household	7	2	2	8
7	Household	5	2	1	4
8	Bathan	55	8	3	12
9	Bathan	200	12	-	-
10	Household	3	1	1	4
11	Household	4	3	1	4
12	Household	5	2	2	8
13	Household	3	1	1	4
14	Household	6	2	1	4
15	Household	5	2	2	8
16	Household	2	1	1	4
Total		841	114	76	299

18 **Figure legends**

19

20 **Supplementary Figure S1**

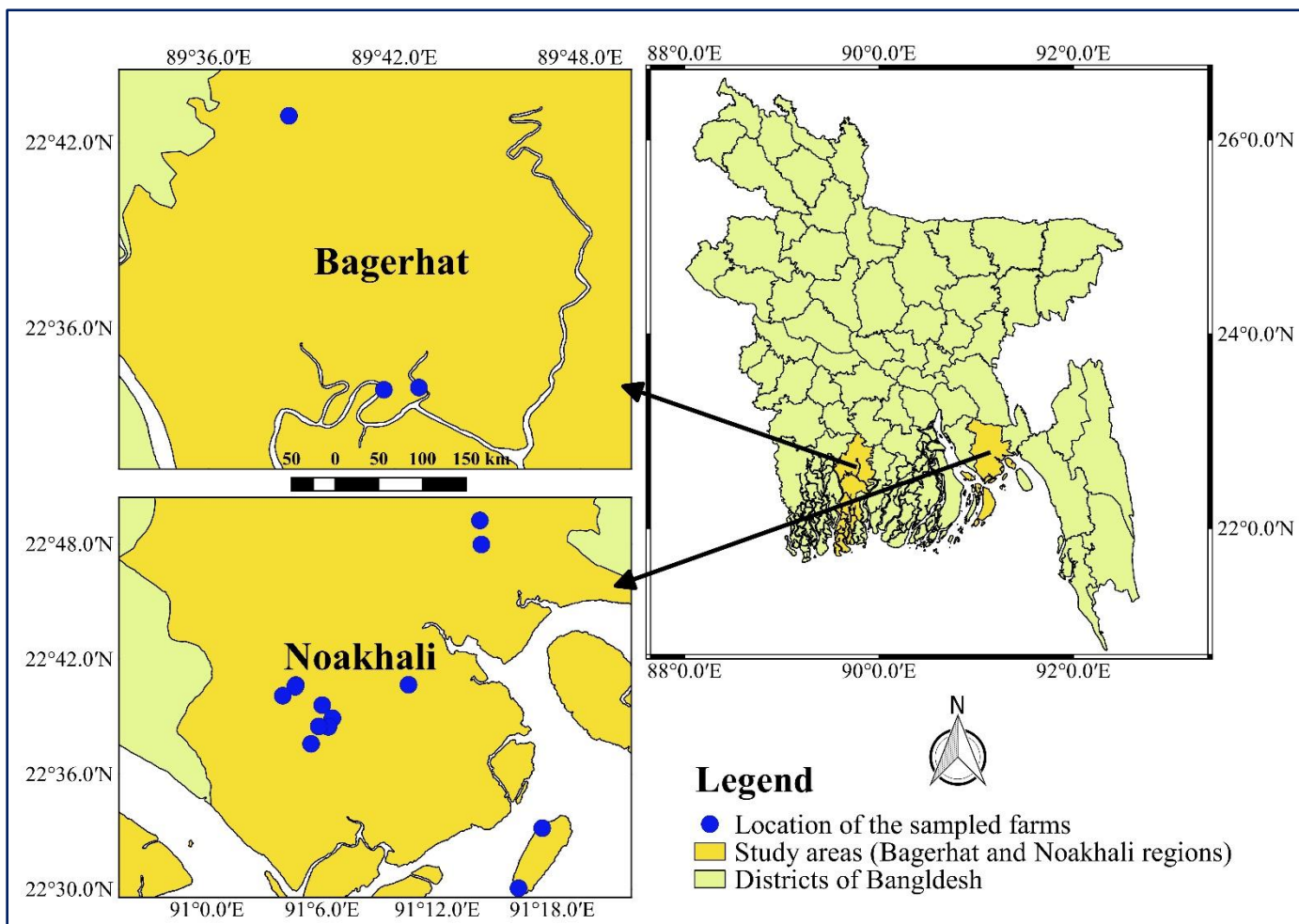
21 Location of the 16 selected buffalo farms in the Noakhali and Bagerhat regions, southern
22 Bangladesh.

23 **Supplementary Figure S2**

24 Bulk milk somatic cell count (SCC) on the 16 selected buffalo farms in the Noakhali and
25 Bagerhat regions of Bangladesh. Nine farms had bulk milk (BM) SCC <200,000
26 cells/mL milk and seven farms had BMSCC \geq 200,000 cells/mL milk.

27

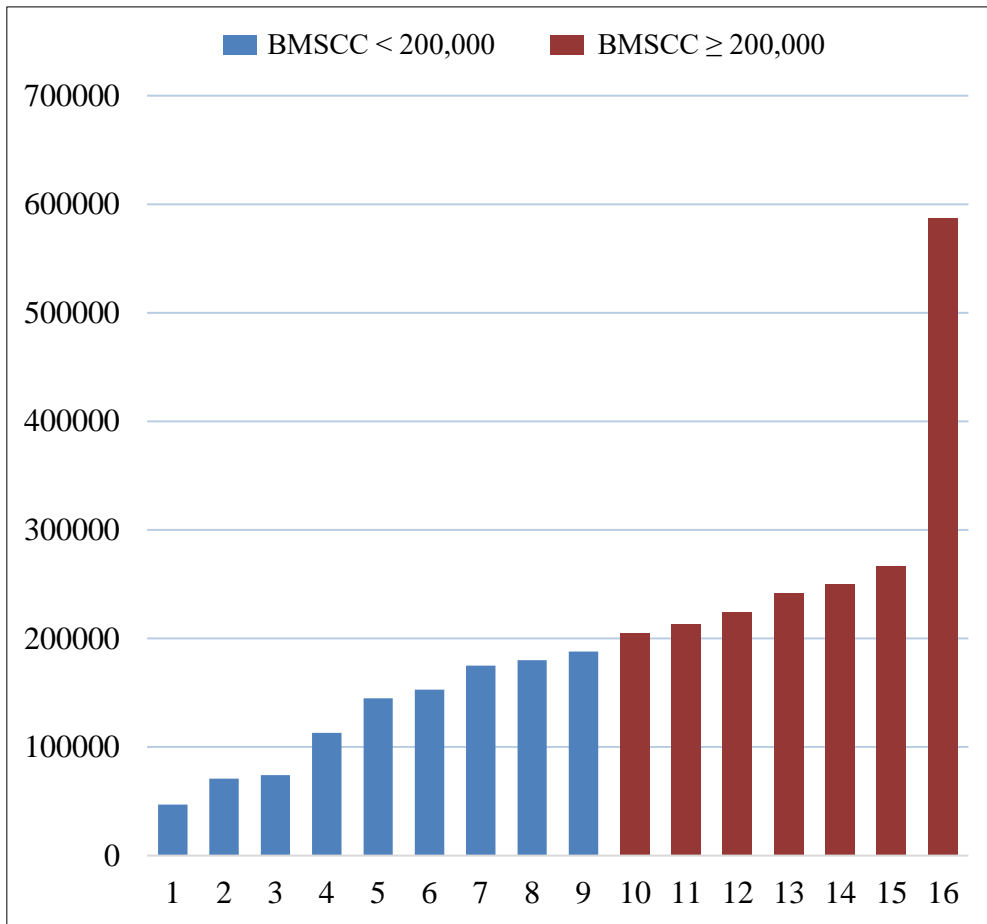
28



29

30

31 **Supplementary Figure S1**



33

34

35 **Supplementary Figure S2**

36