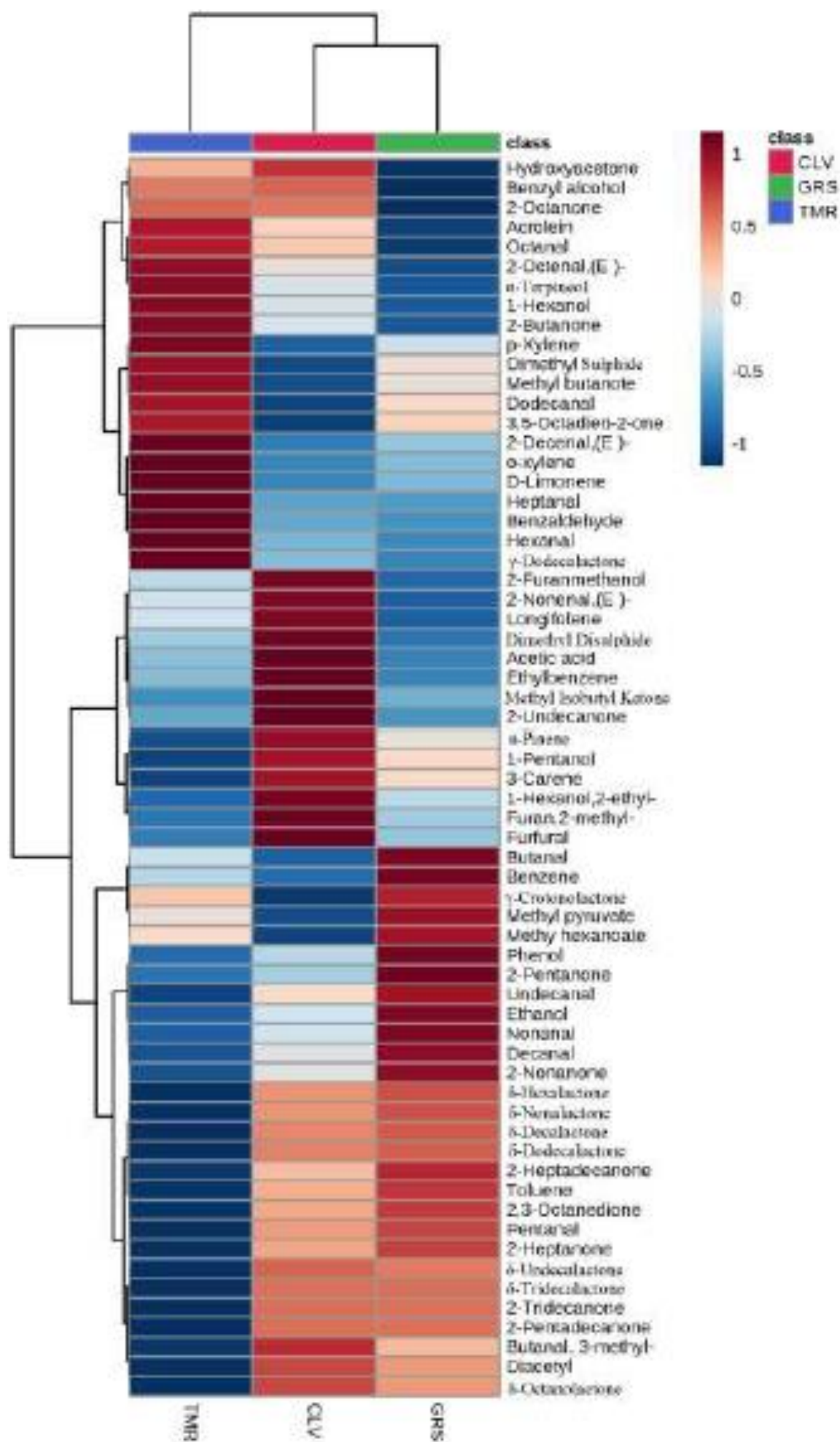


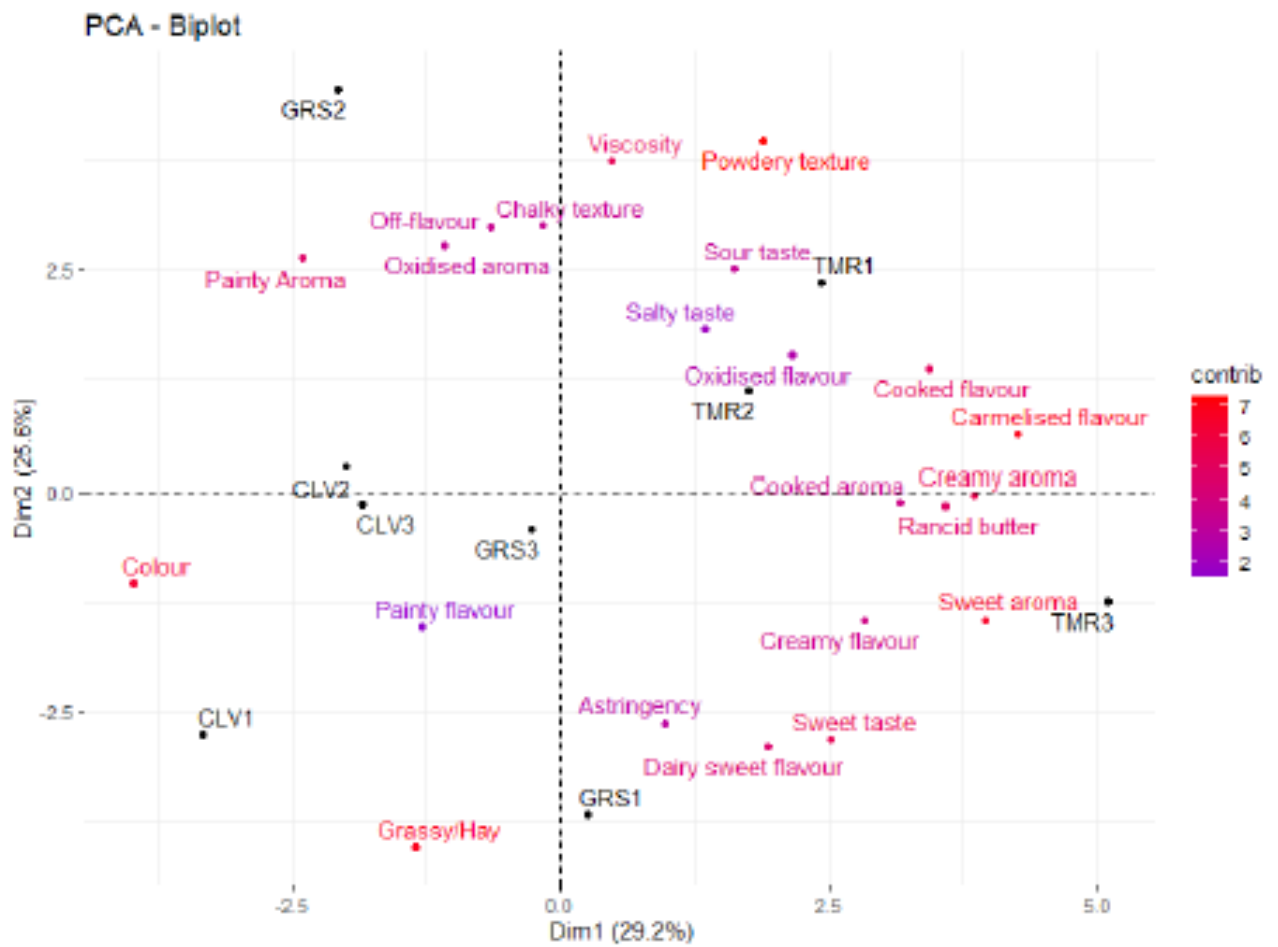
1 **The impact of pasture and non-pasture diets on the sensory and volatile properties of**  
2 **whole milk powder**

3  
4 Zeng Cheng, David T Mannon, Maurice G O’Sullivan, Song Miao, Joseph P Kerry and Kieran  
5 N Kilcawley

6  
7 SUPPLEMENTARY FILE

8  
9  
10  
11  
12  
13  
14  
15  
16  
17  
18  
19  
20  
21  
22  
23  
24 Supplementary Figure S1: Hierarchical clustering analysis (heatmap) of volatile organic  
25 compounds derived from different diets grass (GRS), grass/clover (CLV), and total mixed  
26 rations (TMR). The degree of positive and negative correlation is indicated by + 1 (red) to  
27 - 1 (blue). (For interpretation of the references to colour in this figure legend, the reader is  
28 referred to the web version of this article.)  
29





31

32

33

34

35 Supplementary Figure S2: Optimized Descriptive Profiling. PCA plot for Whole milk powder

36 produced outside on grass (GRS), grass/clover (CLV) or indoors on total mixed rations

37 (TMR) by as evaluated Irish assessors (n = 33).

38