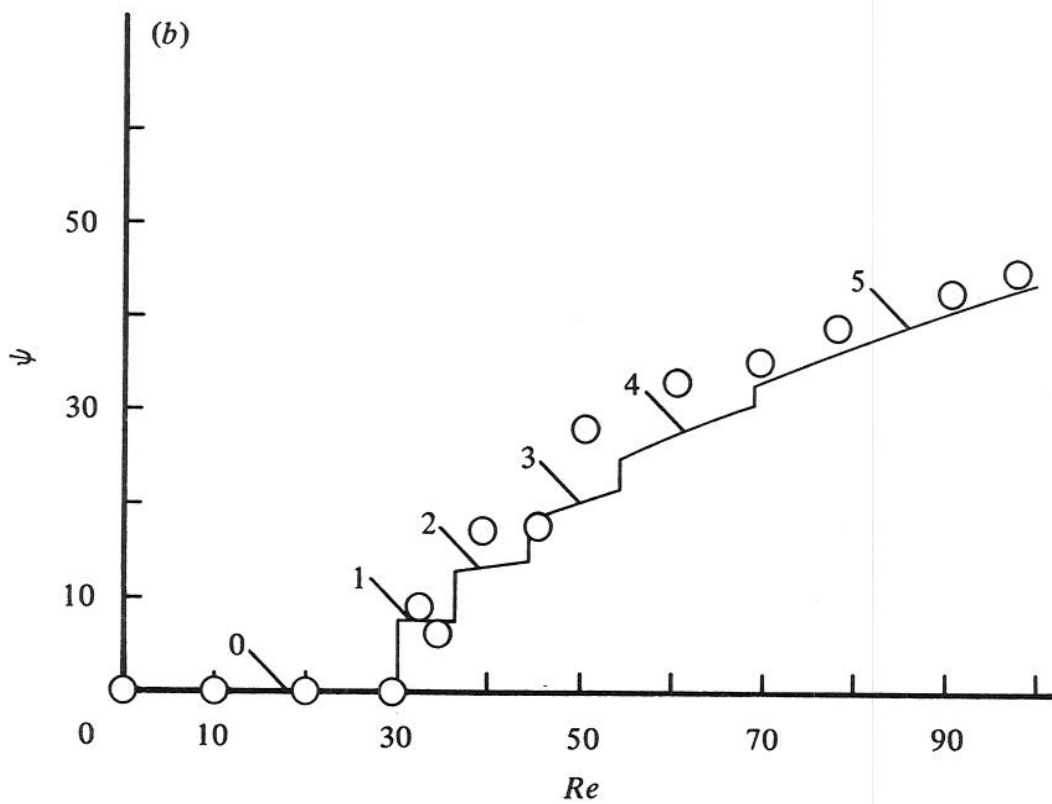
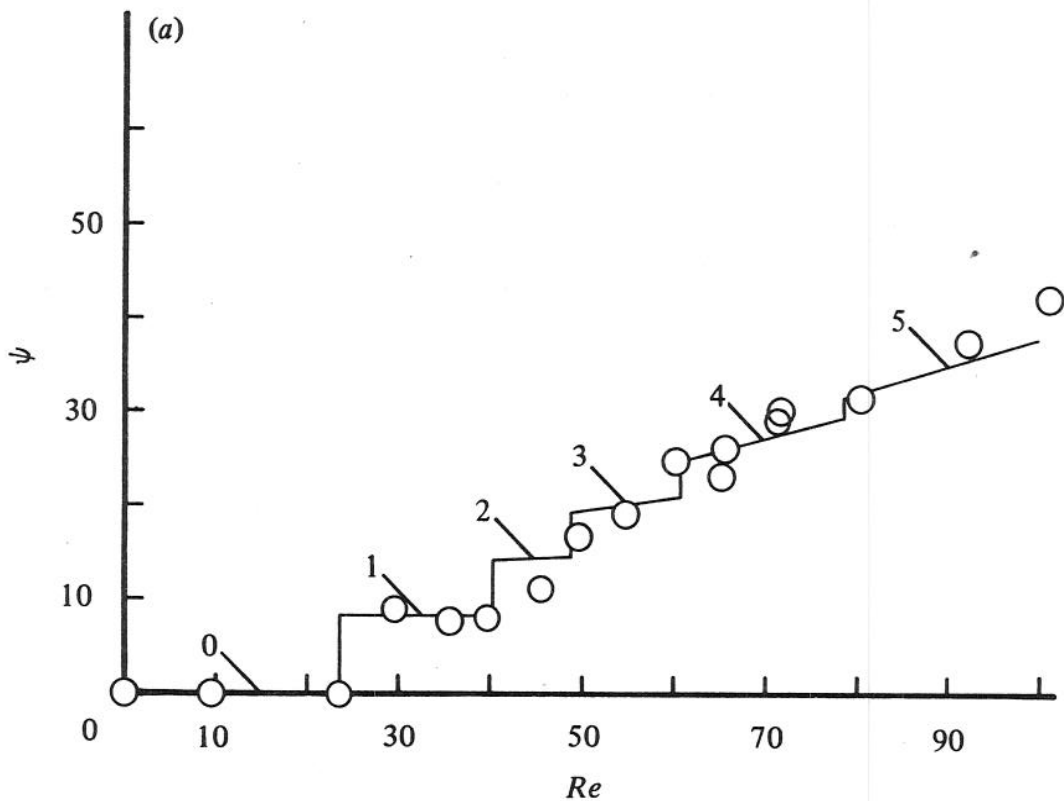


CORRECTED VERSIONS OF FIGURE 6 AND TABLE 4.

Corrected  
versions of  
figure 6 and  
table 4 of  
Tukewski &  
Jankowski  
JFM 102, 1981, 101-126.  
(corrigendum in  
JFM 113, 1983, 536.)



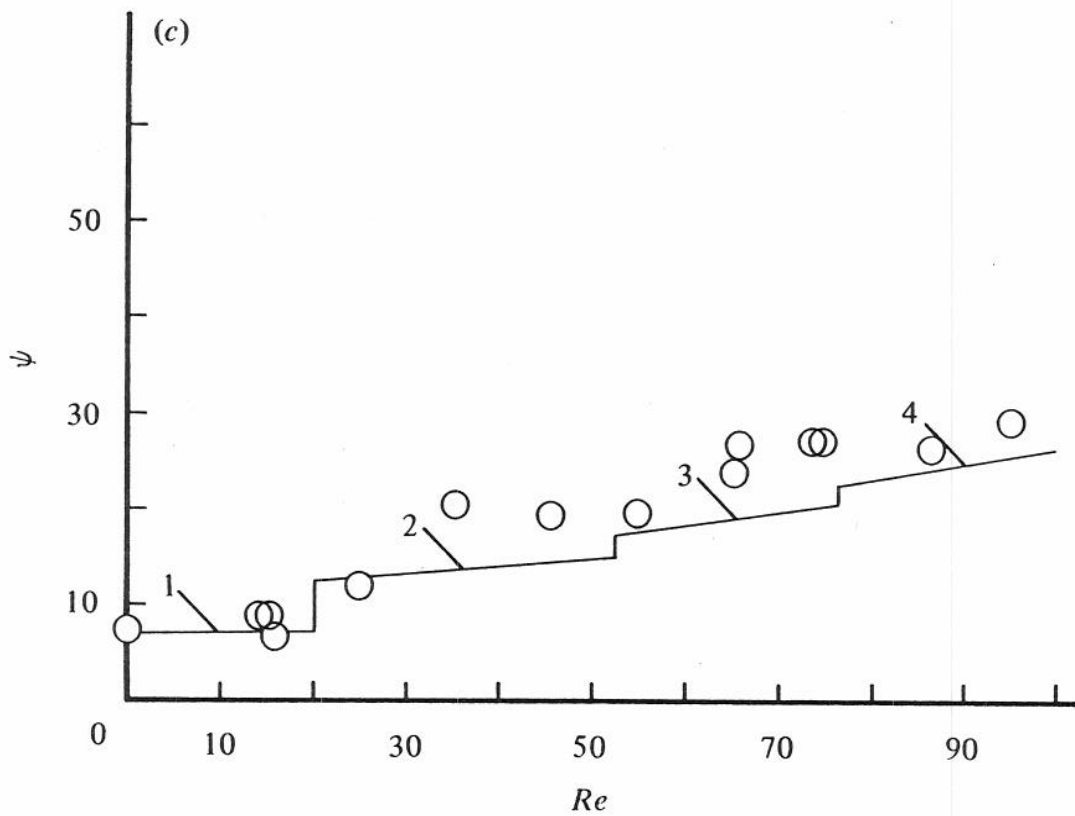


Figure 6. Comparison of  $\psi_C$  and  $\psi_L$  (solid line) (in degrees). The integers identify values of the azimuthal wavenumber; (a)  $\mu = 0$ ; (b)  $\mu = 0.2$ ; (c)  $\mu = -0.5$ .

$\mu = 0.$				$\mu = 0.2$				$\mu = -0.5$			
Re	$\psi_C$	$\alpha_C$	$n_C$	Re	$\psi_C$	$\alpha_C$	$n_C$	Re	$\psi_C$	$\alpha_C$	$n_C$
0.	0.	3.24	0.	0.	0.	3.14	0.	0.	7.5	4.19	1.10
9.4	0.	3.24	0.	10.0	0.	3.35	0.	14.1	9.0	4.57	1.45
23.7	0.	3.24	0.	19.9	0.	3.14	0.	15.2	9.0	4.57	1.45
29.4	9.0	3.59	1.14	29.6	0.	3.35	0.	16.0	6.5	5.29	1.21
35.7	7.6	4.19	1.12	32.3	9.0	3.14	0.99	24.9	12.0	4.19	1.78
39.6	8.0	3.87	1.09	34.2	6.2	4.57	0.99	35.3	20.5	4.56	3.41
45.5	11.3	3.59	1.43	39.3	17.2	4.19	2.59	45.6	19.4	4.19	2.95
49.7	16.6	4.57	2.72	45.4	17.8	3.87	2.49	54.9	19.9	4.19	3.03
54.9	19.0	4.19	2.89	50.4	28.0	4.19	4.46	65.3	24.0	4.79	4.27
60.3	24.6	4.37	4.00	60.4	33.0	4.19	5.44	65.7	27.0	5.59	5.70
65.3	23.0	5.03	4.27	69.7	35.2	3.87	5.46	73.6	27.2	4.79	4.92
65.9	26.0	4.57	4.46	78.1	39.0	3.87	6.27	74.7	27.3	5.03	5.19
71.5	29.0	4.79	5.31	90.4	42.8	4.19	7.76	86.3	26.4	5.29	5.25
71.8	30.0	4.79	5.53	97.7	45.0	3.59	7.18	95.3	29.5	5.03	5.69
80.3	31.3	4.37	5.31								
92.1	37.3	4.37	6.66								

Table 4. Experimental results for  $\psi_C$  (degrees),  $\alpha_C$ , and  $n_C$  as a function of  $\mu$  and Re.