

Residual diagnostic plots for models in ‘Evaluating the transferability of empirical models of debris-covered glacier melt.’

A Winter-Billington, RD Moore and R Dadic

February, 2020

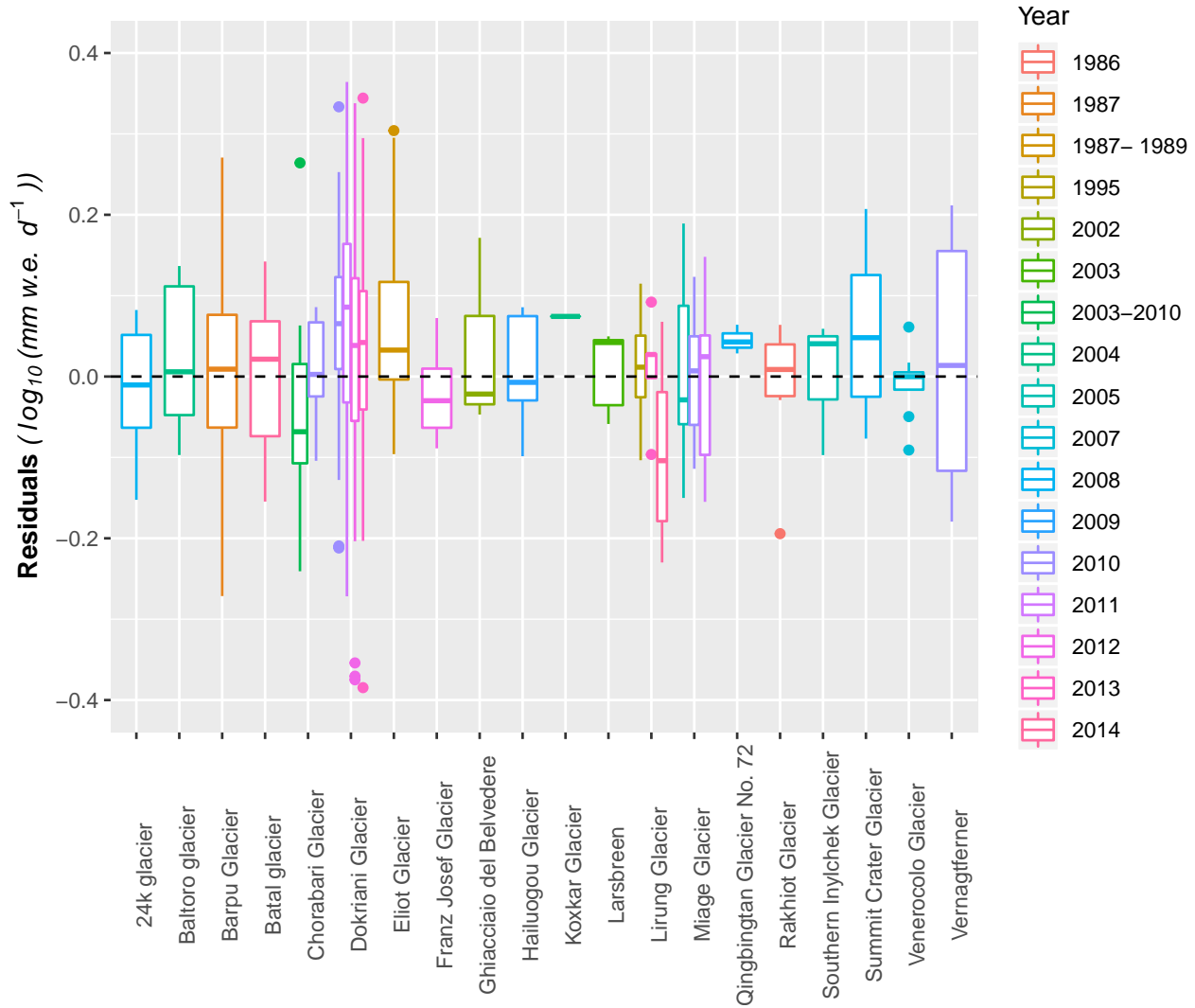


Figure 1: Boxplot of **Model KM1** residuals, grouped by the random effects *Glacier* and *Year*.

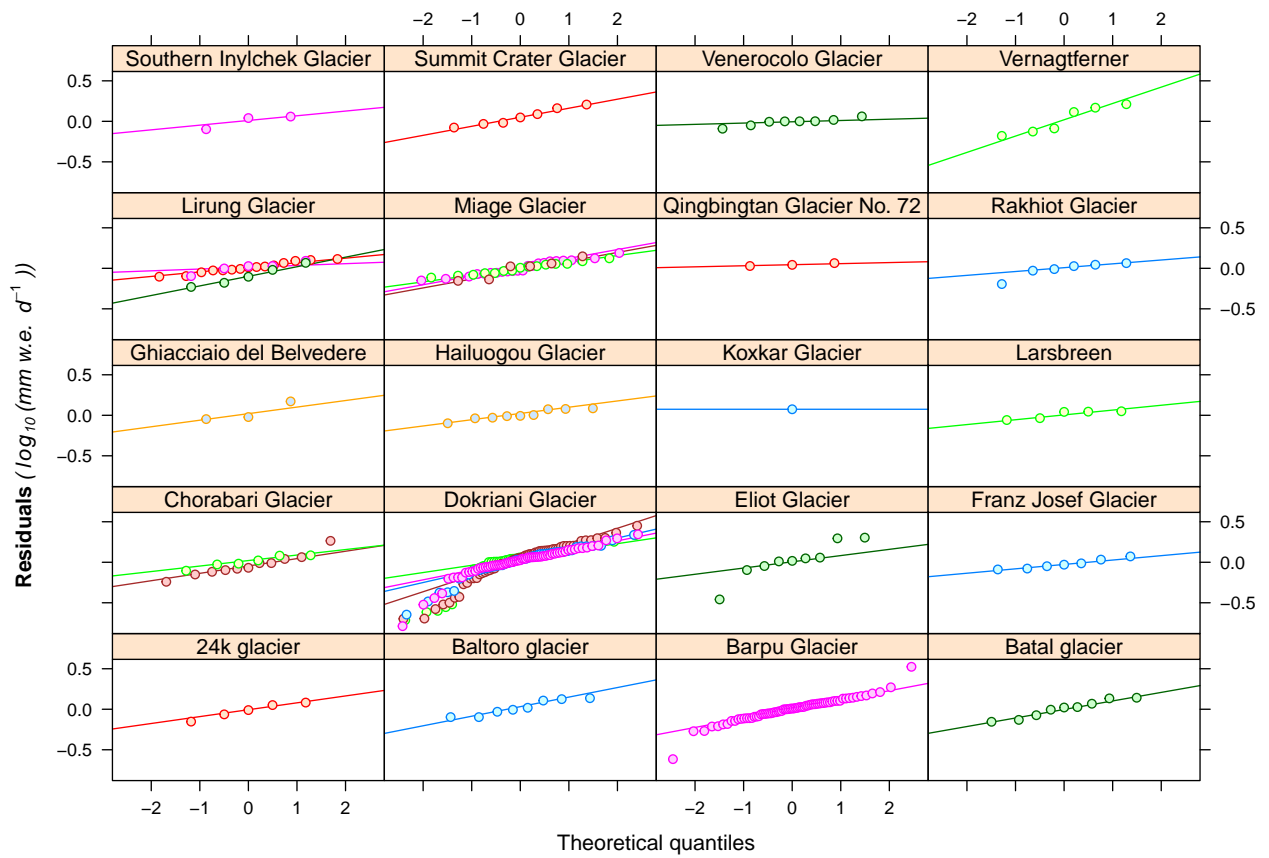


Figure 2: Normal quantile plots of **Model KM1** residuals, grouped by the random effects *Glacier* and *Year*.

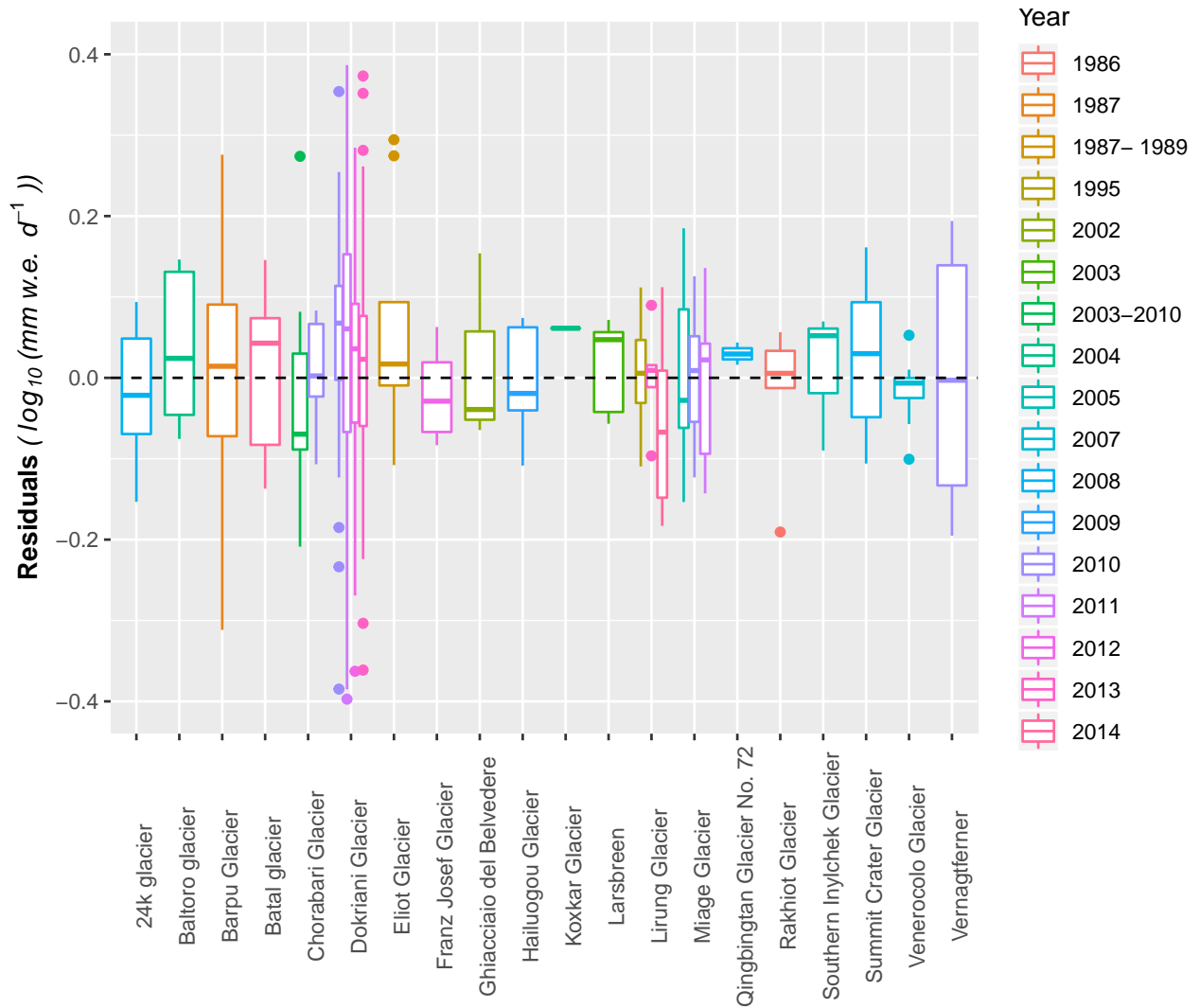


Figure 3: Boxplot of **Model KM2** residuals, grouped by the random effects *Glacier* and *Year*.

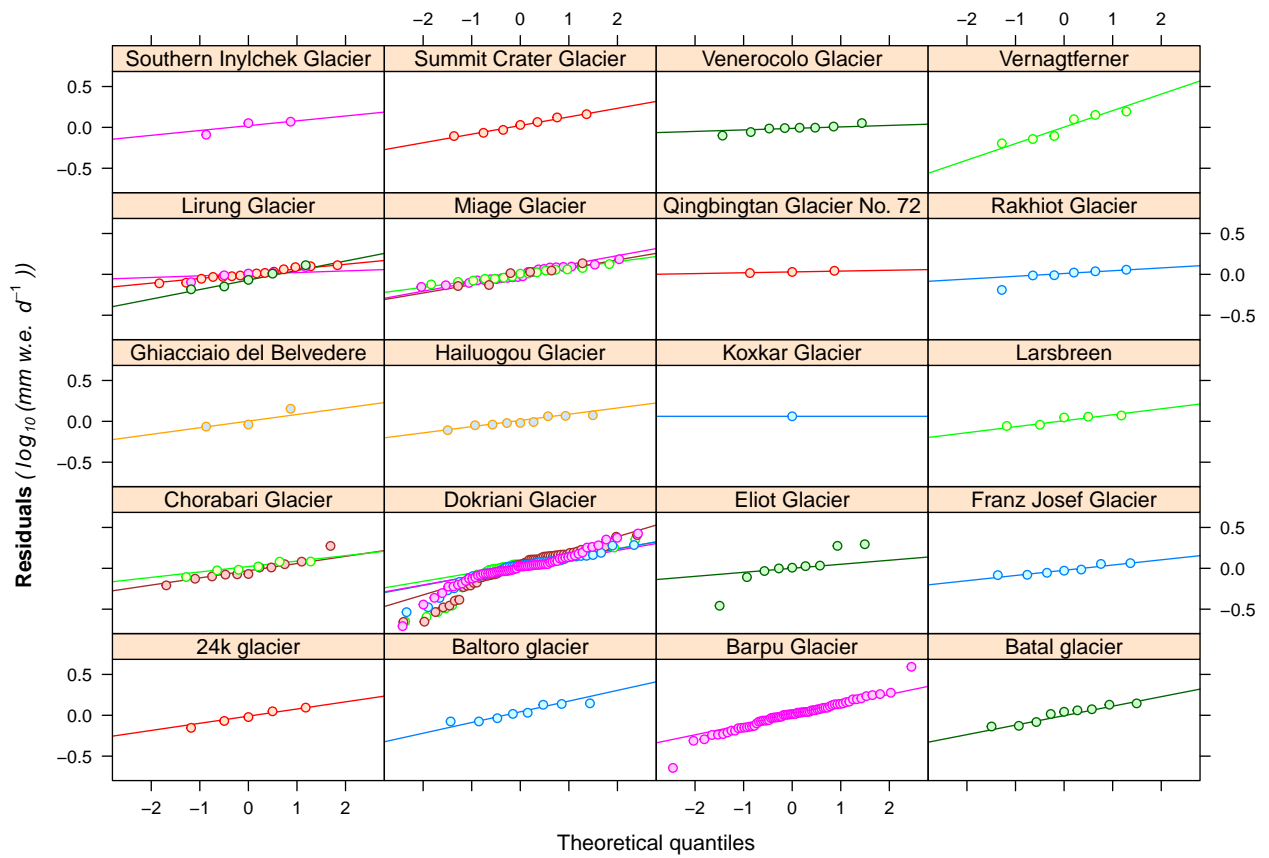


Figure 4: Normal quantile plots of **Model KM2** residuals, grouped by the random effects *Glacier* and *Year*.

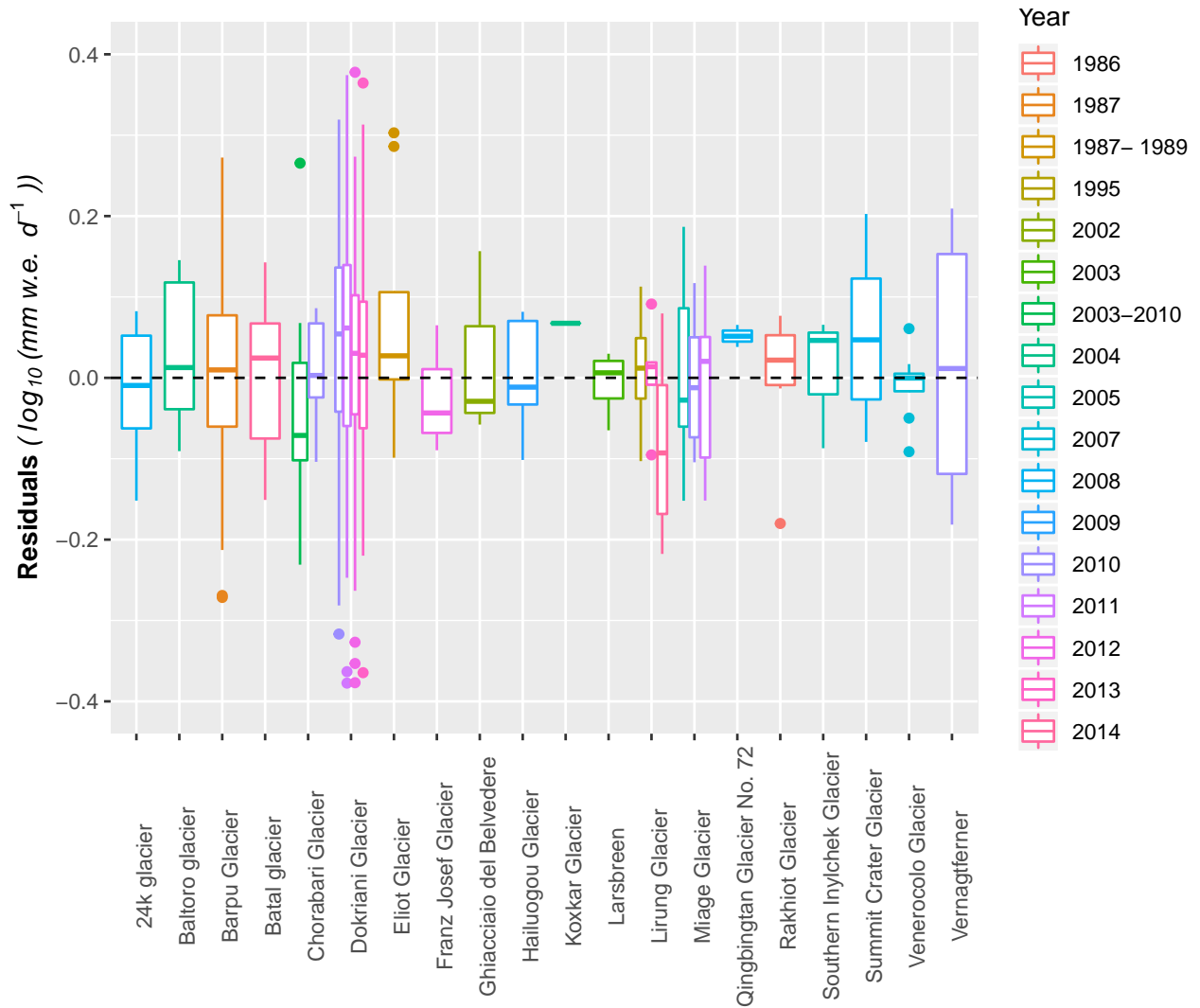


Figure 5: Boxplot of **Model KM3** residuals, grouped by the random effects *Glacier* and *Year*.

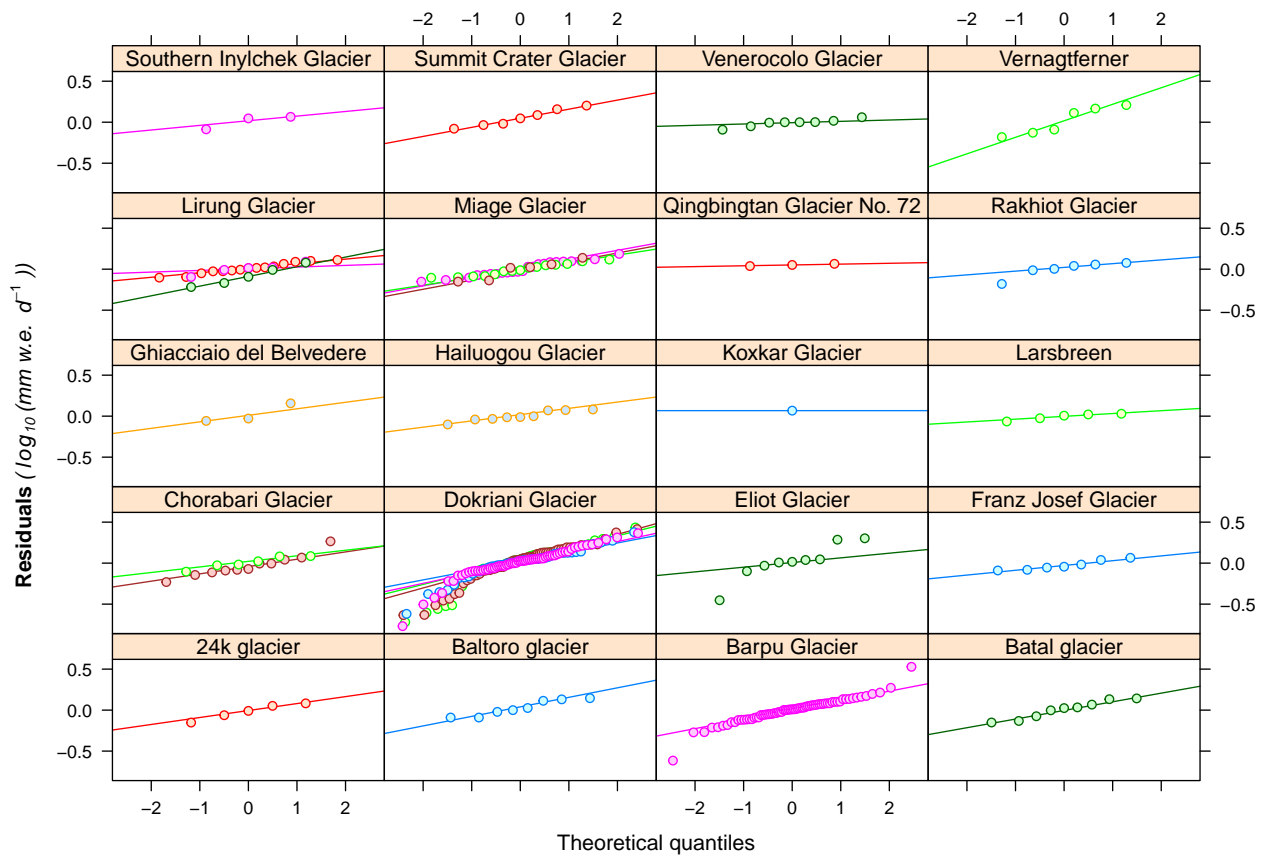


Figure 6: Normal quantile plots of **Model KM3** residuals, grouped by the random effects *Glacier* and *Year*.

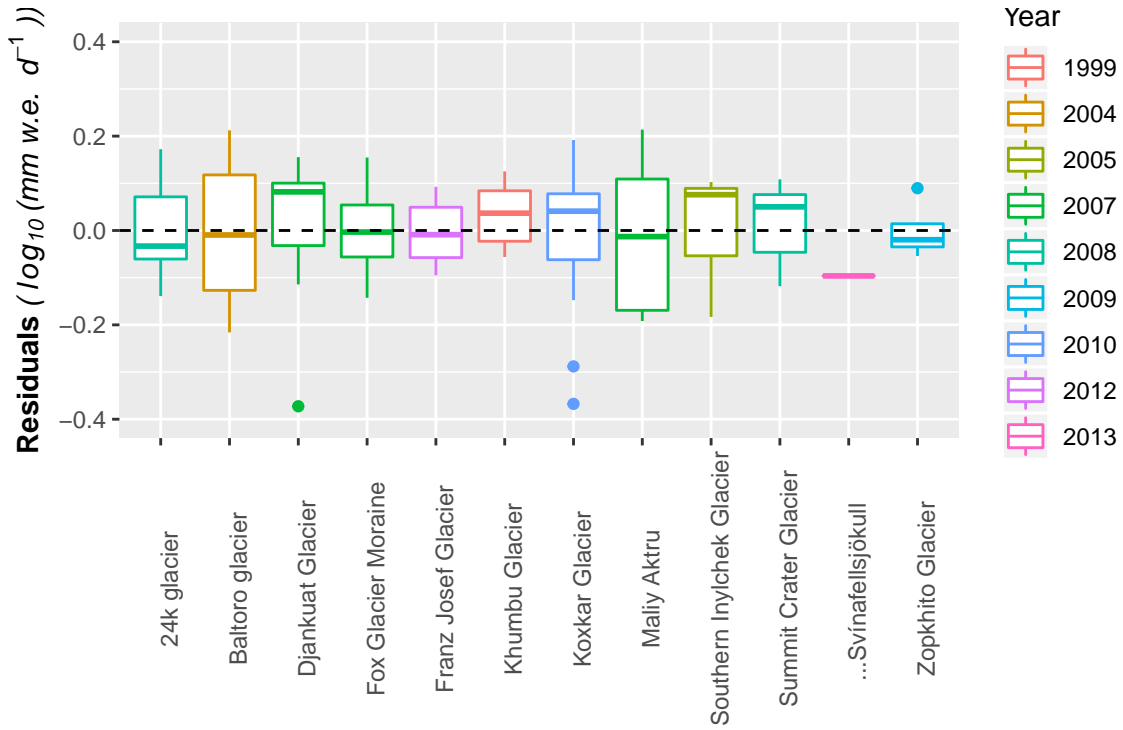


Figure 7: Boxplot of **Model KO1** residuals, grouped by the random effects *Glacier* and *Year*.

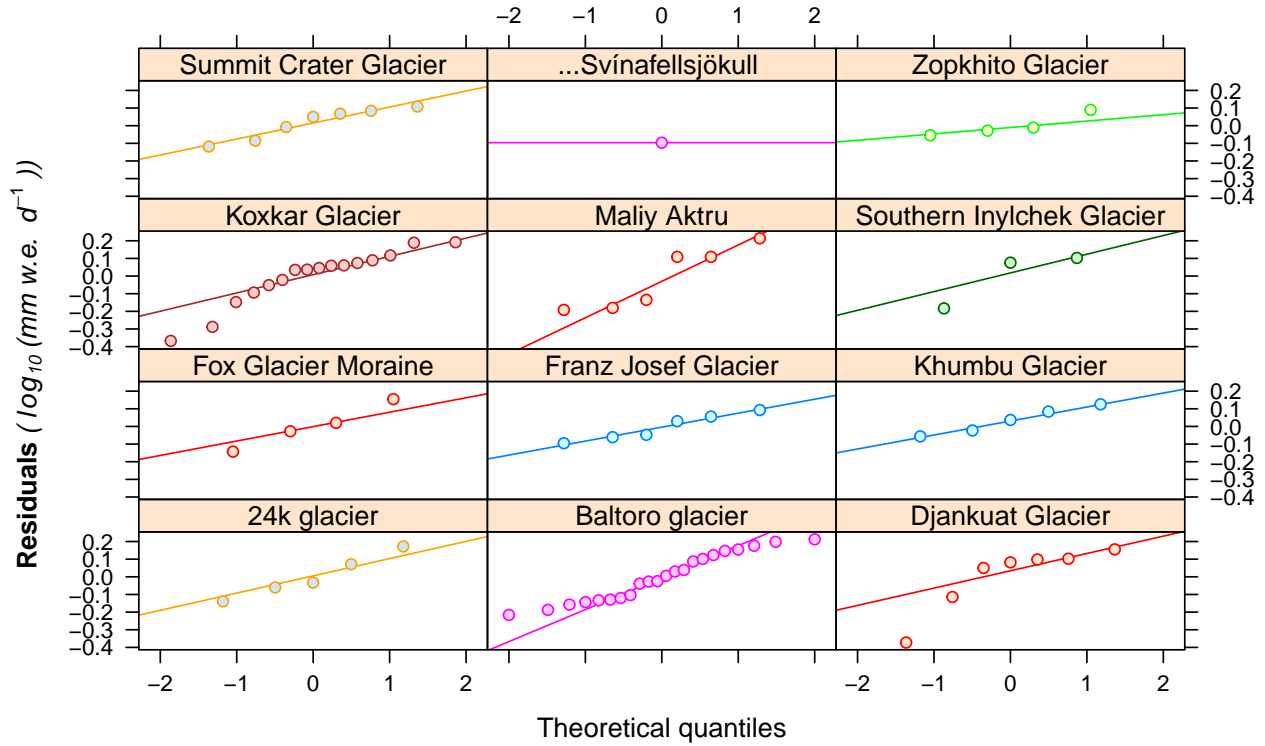


Figure 8: Normal quantile plots of **Model KO1** residuals, grouped by the random effects *Glacier* and *Year*.

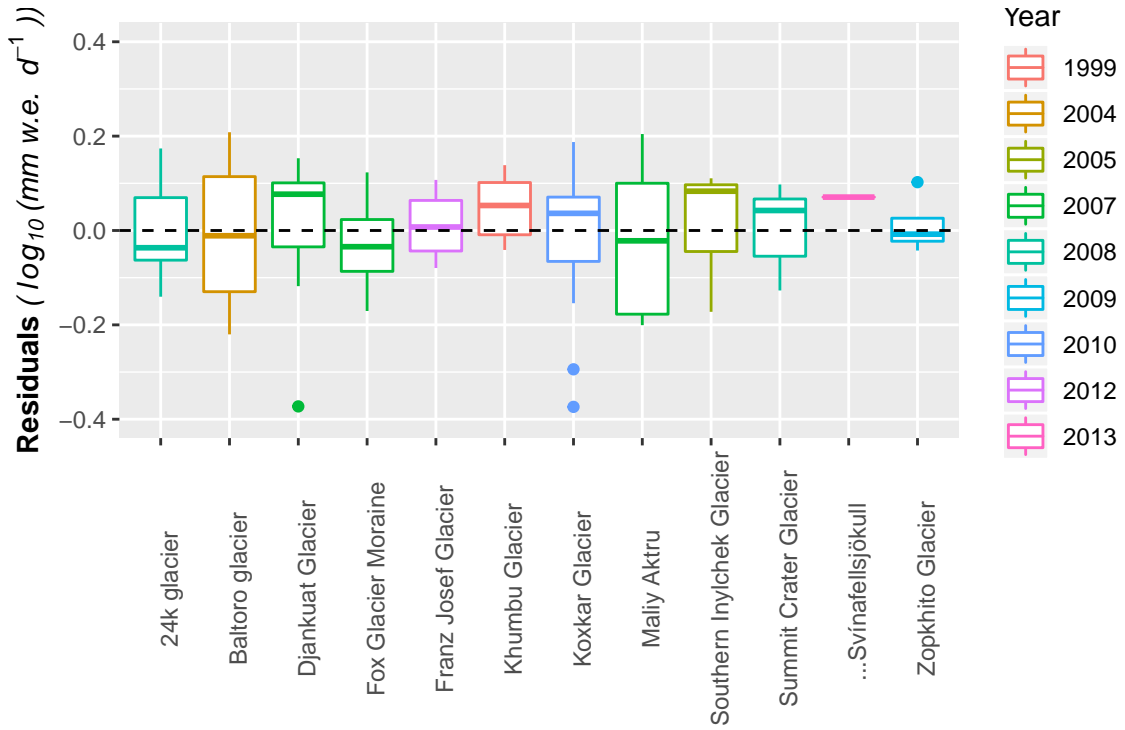


Figure 9: Boxplot of **Model KO2** residuals, grouped by the random effects *Glacier* and *Year*.

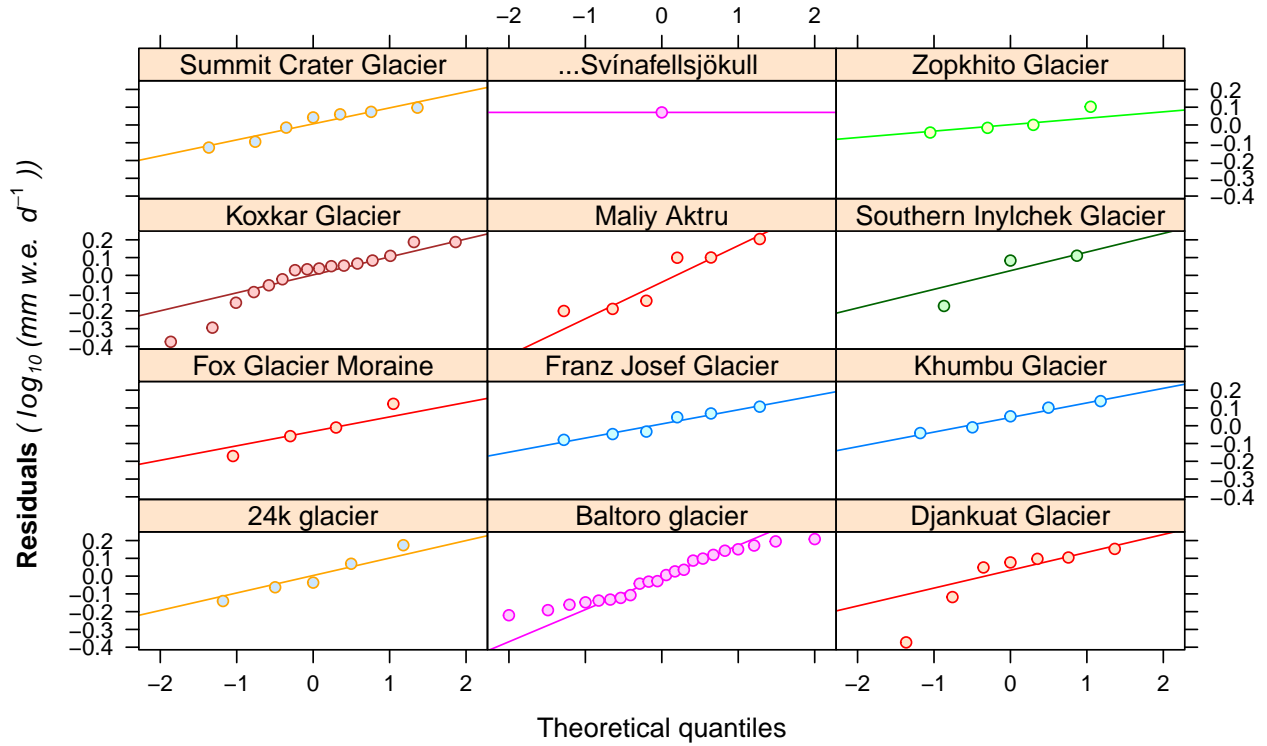


Figure 10: Normal quantile plots of **Model KO2** residuals, grouped by the random effects *Glacier* and *Year*.

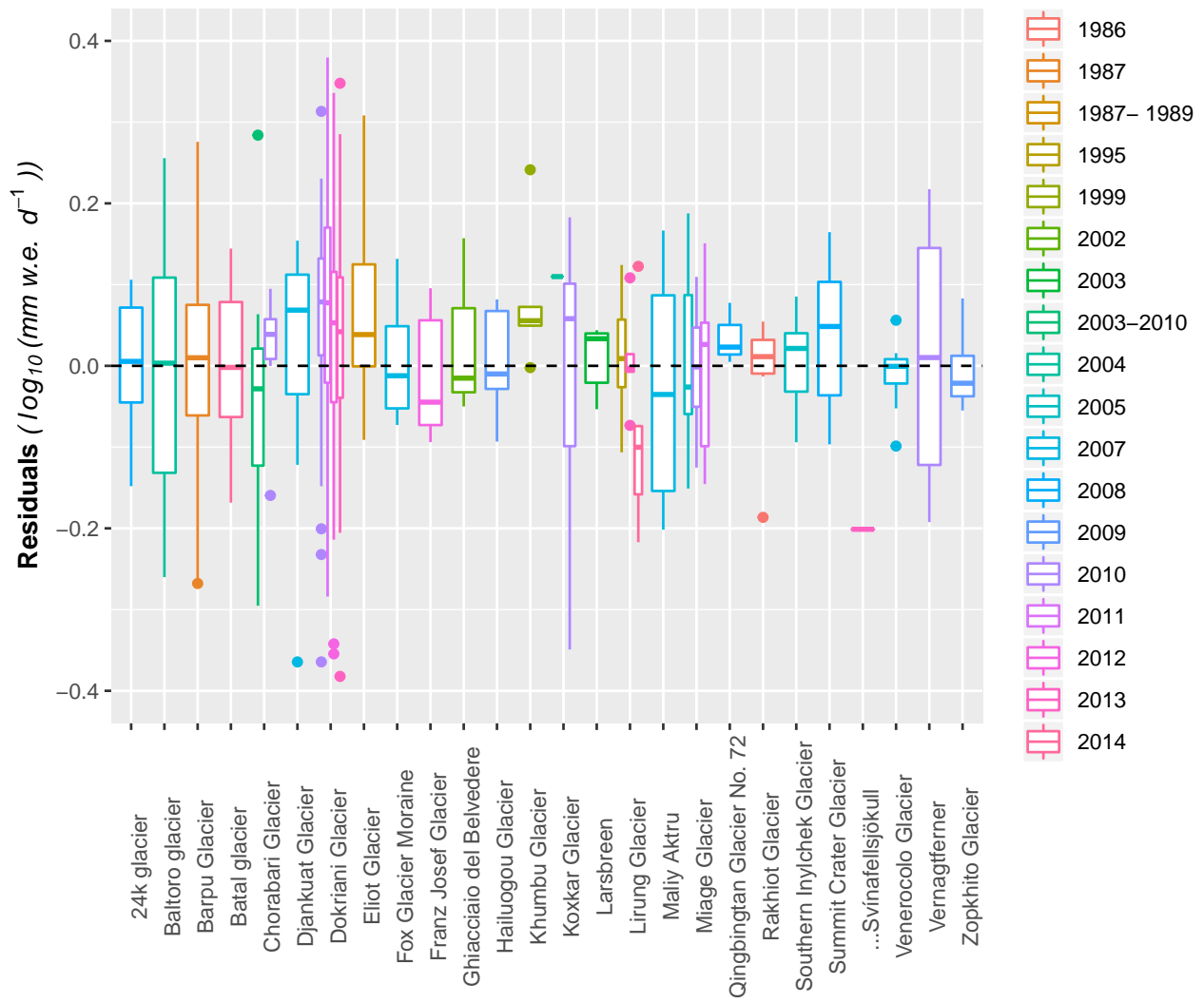


Figure 11: Boxplot of **Model KP1** residuals, grouped by the random effects *Glacier* and *Year*.

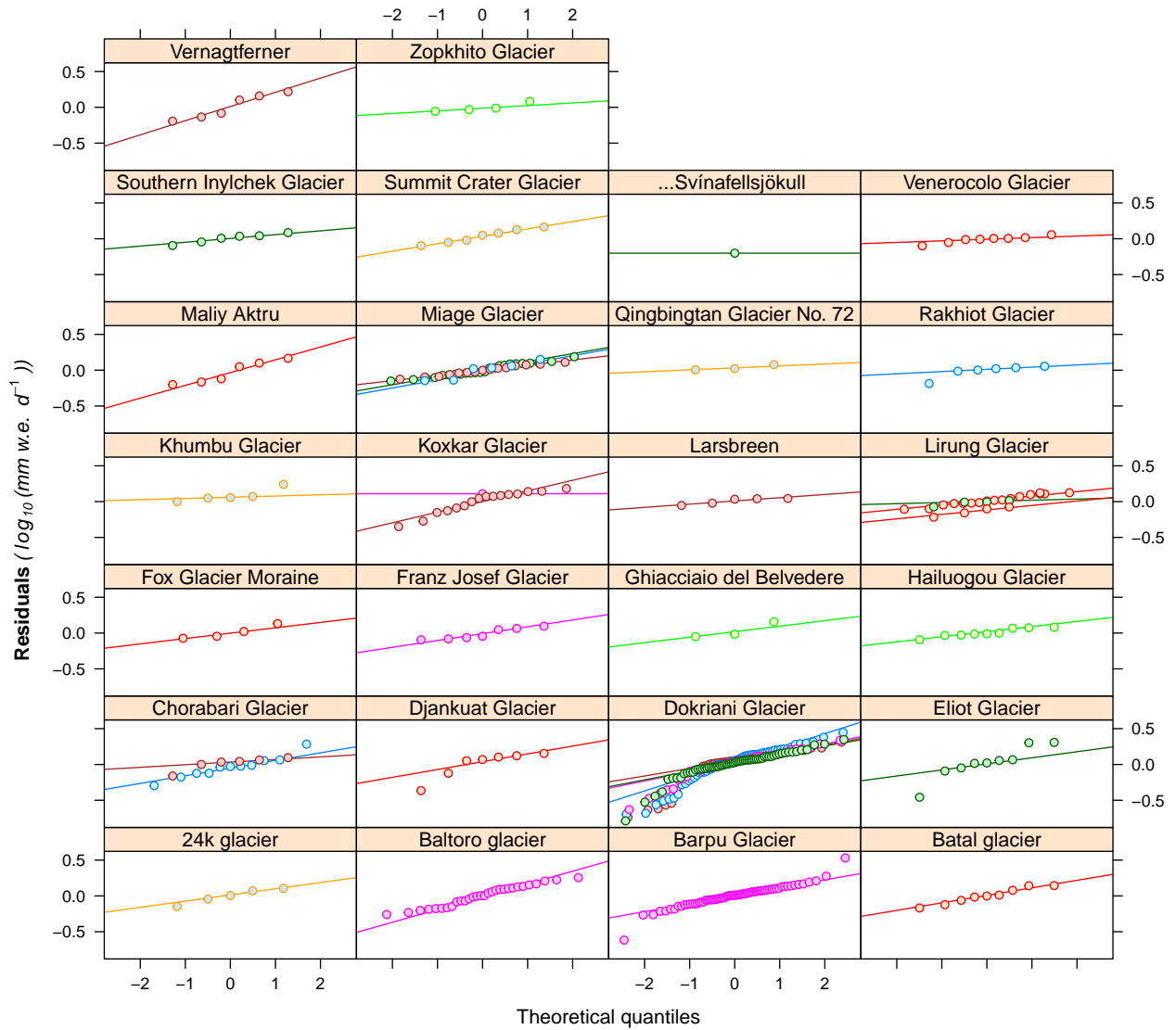


Figure 12: Normal quantile plots of **Model KP1** residuals, grouped by the random effects *Glacier* and *Year*.

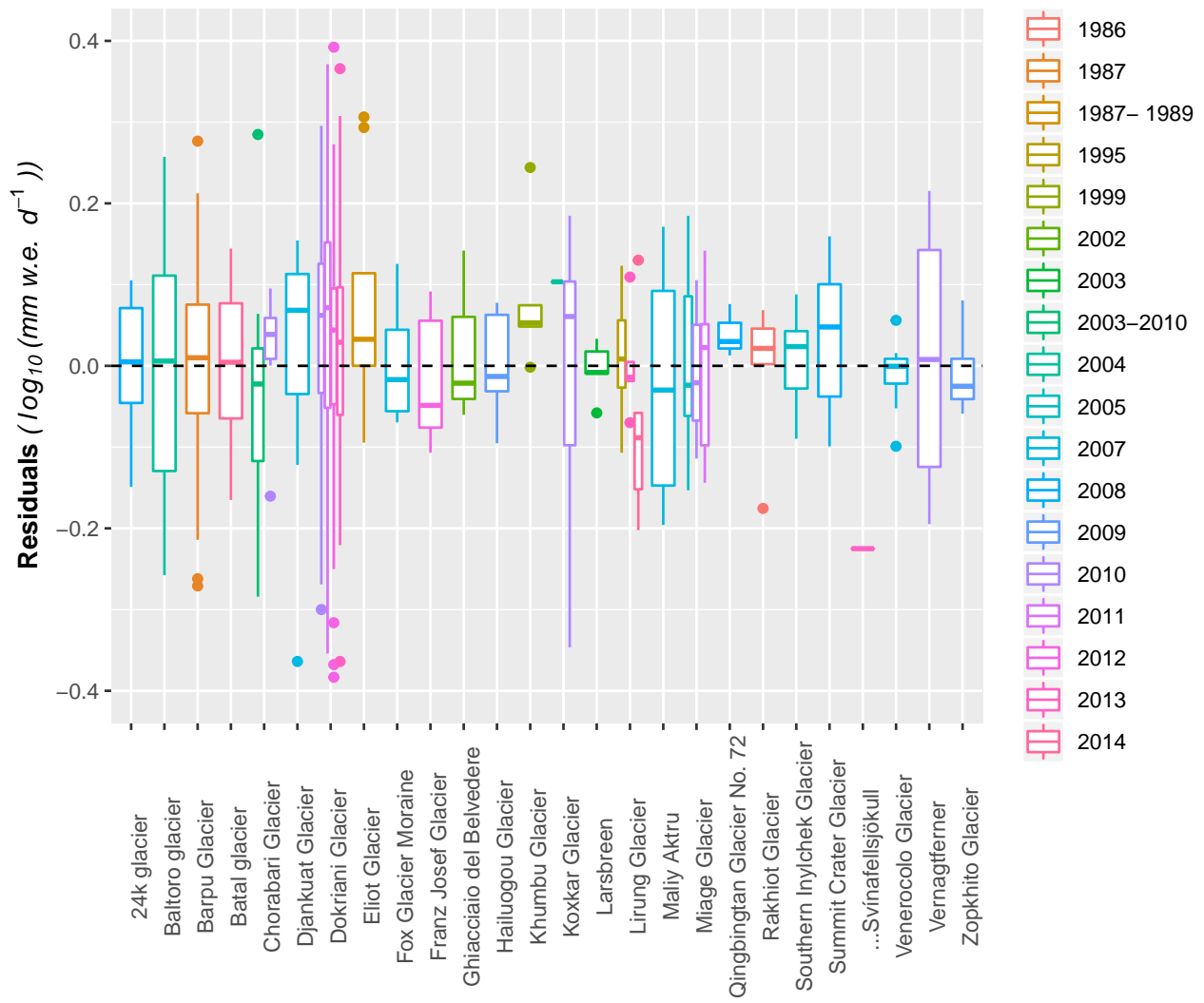


Figure 13: Boxplot of **Model KP2** residuals, grouped by the random effects *Glacier* and *Year*.

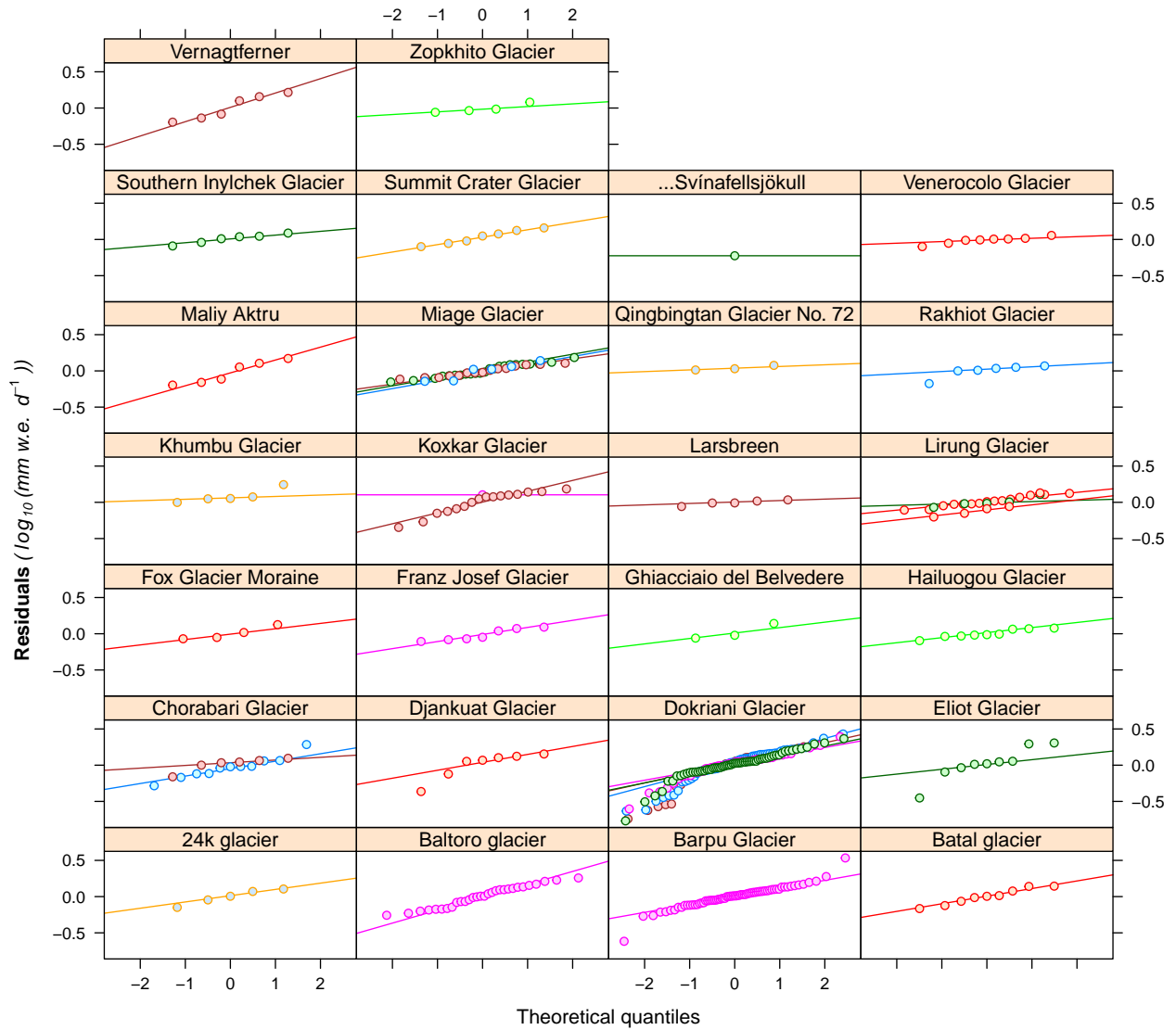


Figure 14: Normal quantile plots of **Model KP2** residuals, grouped by the random effects *Glacier* and *Year*.

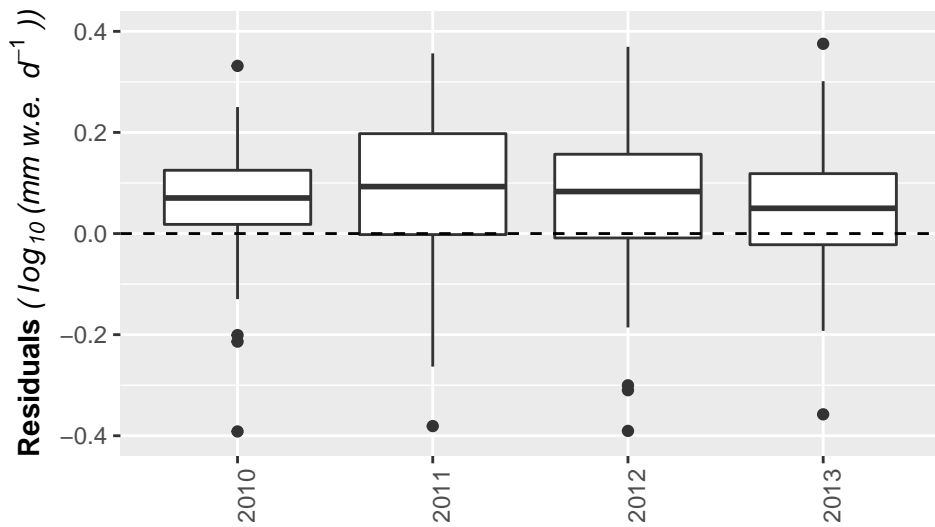


Figure 15: Boxplot of **Model KM_d1** residuals, grouped by the random effect *Year*.

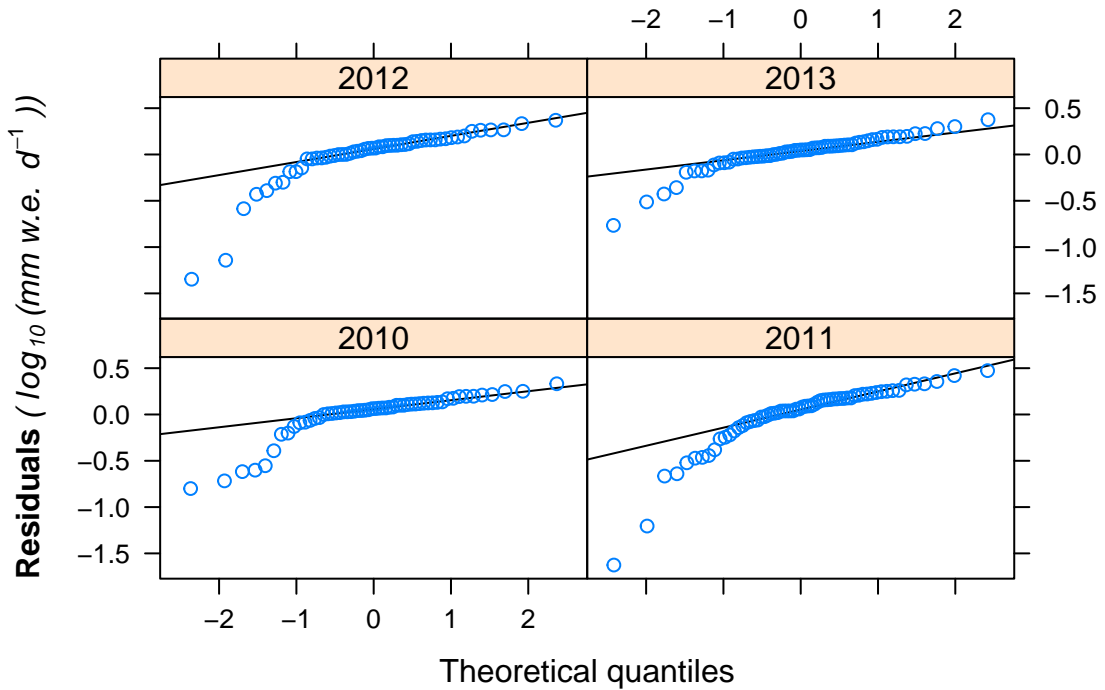


Figure 16: Normal quantile plots of **Model KM_d1** residuals, grouped by the random effects *Glacier* and *Year*.

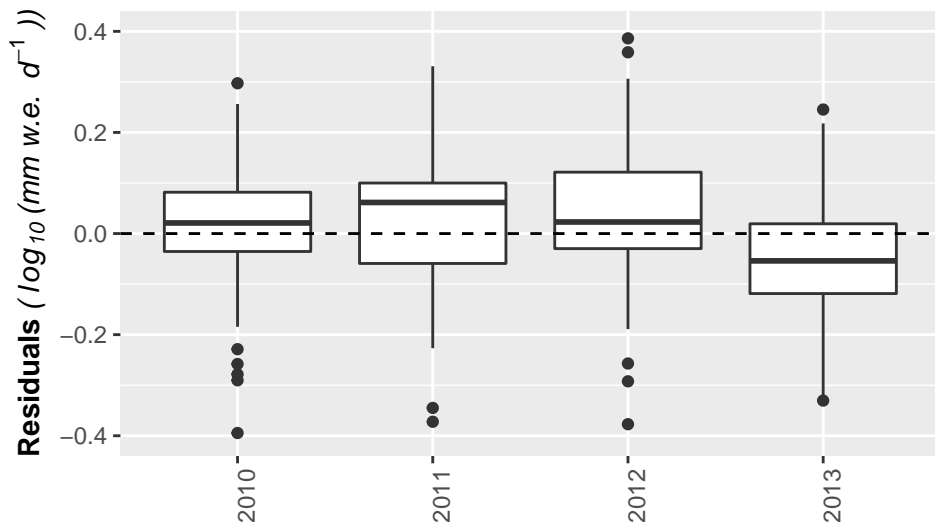


Figure 17: Boxplot of **Model KM_d2** residuals, grouped by the random effect *Year*.

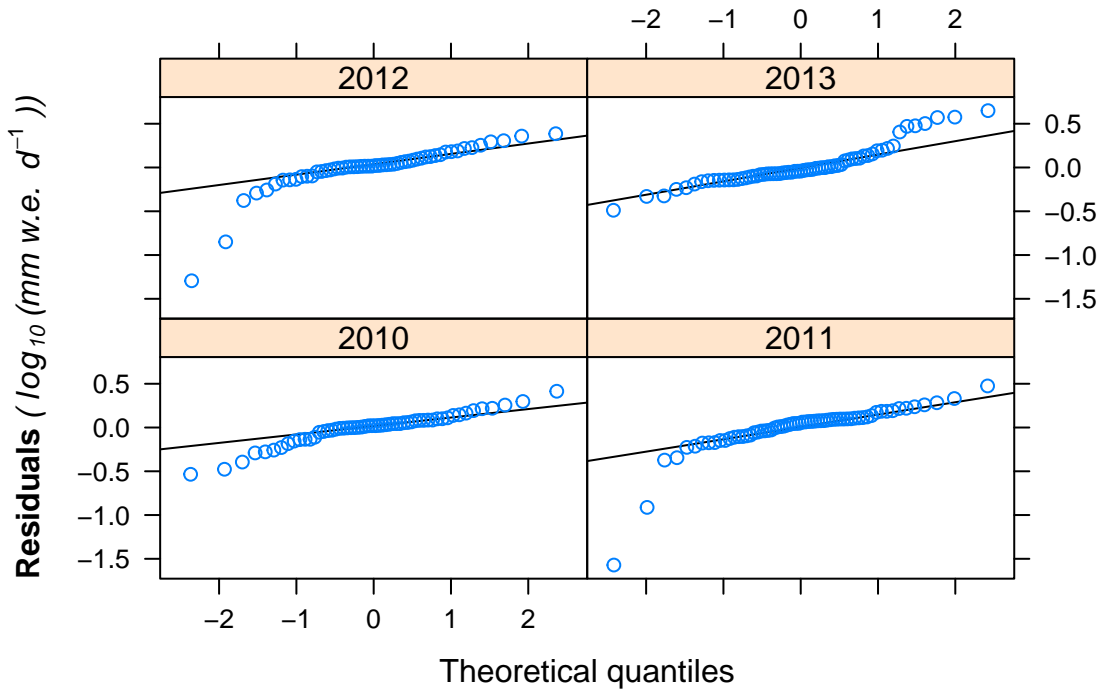


Figure 18: Normal quantile plots of **Model KM_d2** residuals, grouped by the random effects *Glacier* and *Year*.