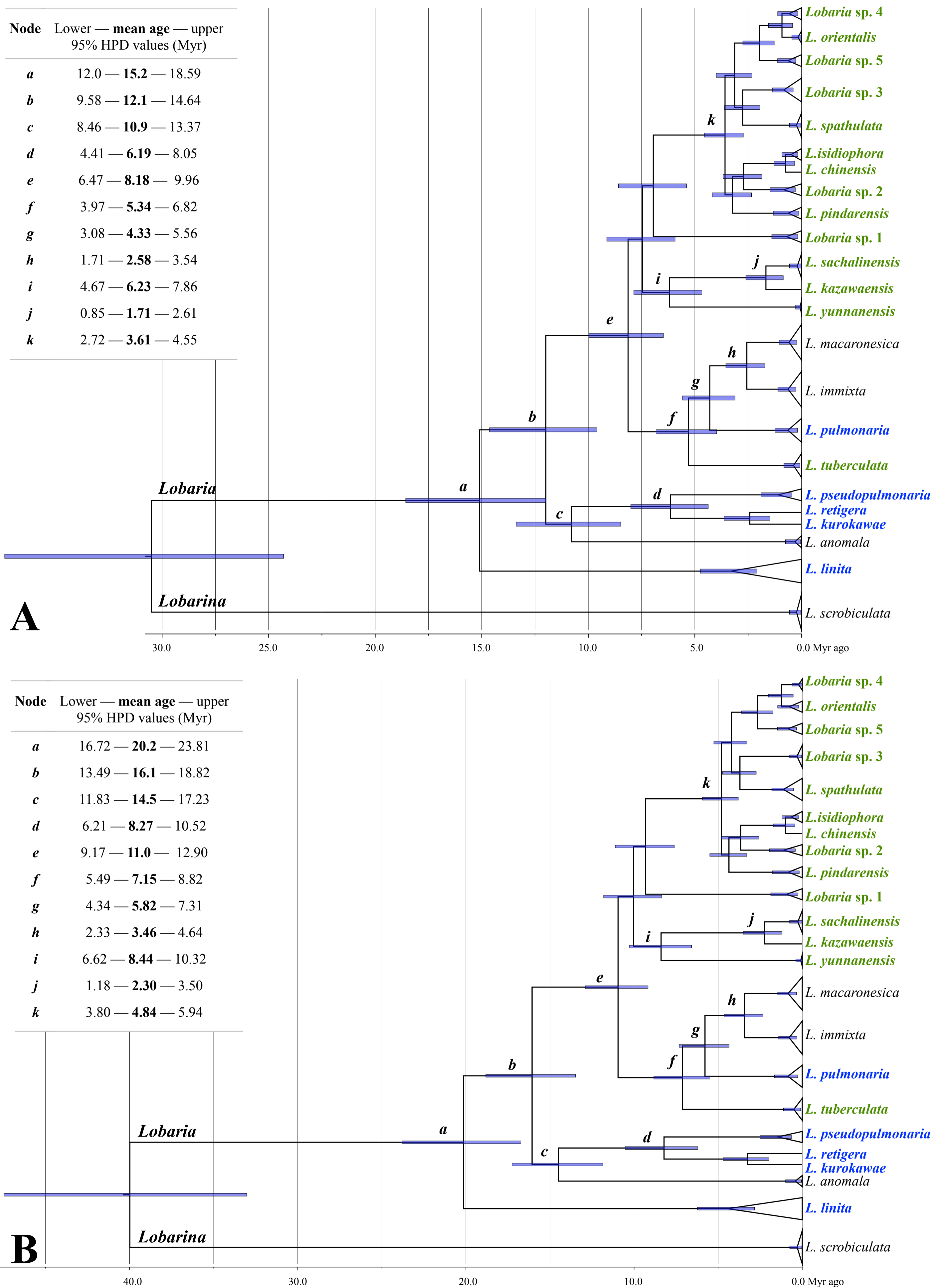


# Estimating the timescale of *Lobaria* diversification

*The Lichenologist*

Cornejo & Scheidegger

Swiss Federal Research Institute WSL



**Figure S1.** Timetrees of the genus *Lobaria* obtained from Bayesian analysis (BEAST 1.84). Analysis **A** used an RPB2 mutation rate as calibration reference (= 1.50 substitutions/site/year x 10<sup>-9</sup>; Leavitt *et al.* 2012). Analysis **B** used two mutation rates as calibration references (RPB2, and nrITS = 2.40 substitutions/site/year x 10<sup>-9</sup>; Leavitt *et al.* 2012). Most branches obtained posterior probability values of at least 0.98. The mean ages for *a*–*k* are given in the table at the top left for each analysis. Species written in bold green are exclusively from East Asia, and those in bold blue also grow in North America and other regions. Only *L. anomala* (West Pacific coast), *L. immixta* and *L. macaronesica* (both Macaronesian Islands in the North Atlantic) grow outside of East Asia.