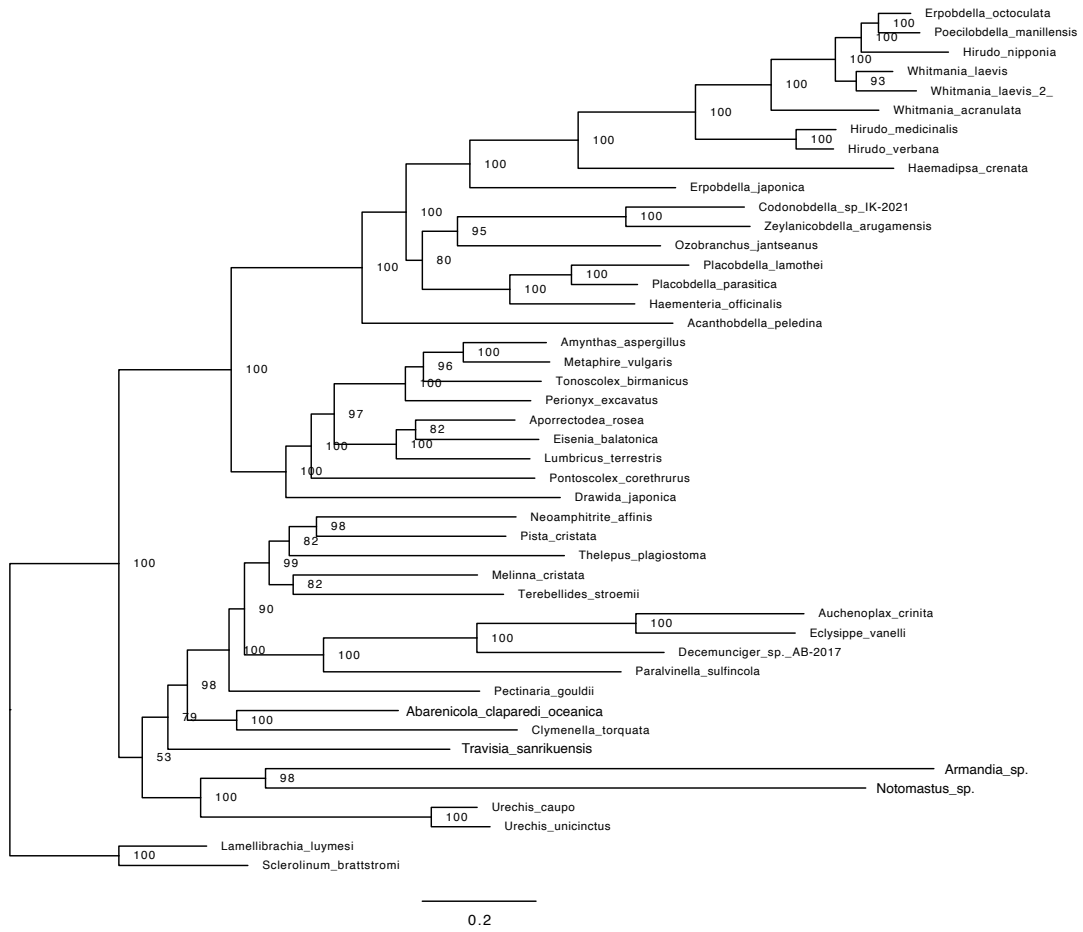
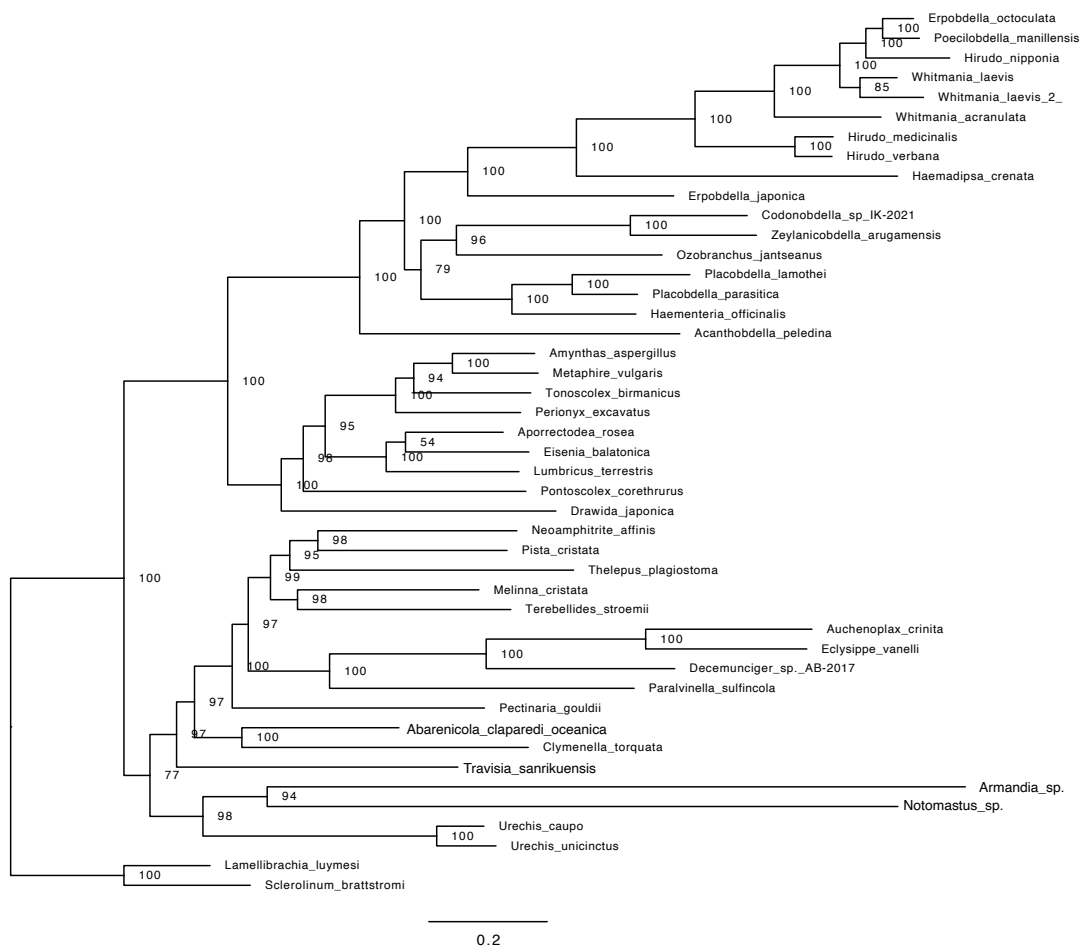


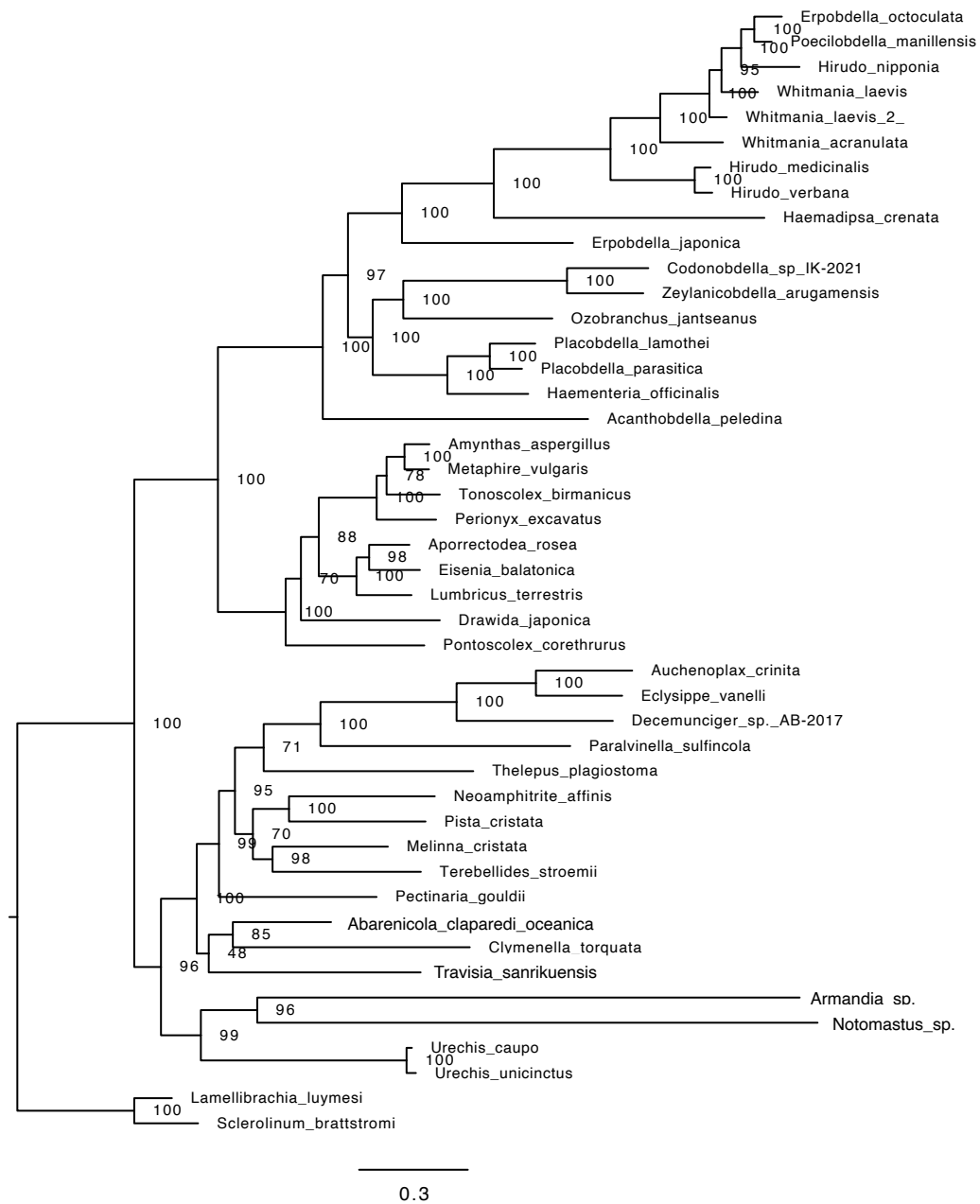
Supplementary Figure 1. Maximum likelihood phylogeny of a subset of Sedentaria based on the dataset including the nucleotide sequences of 13 PCGs (nucP).



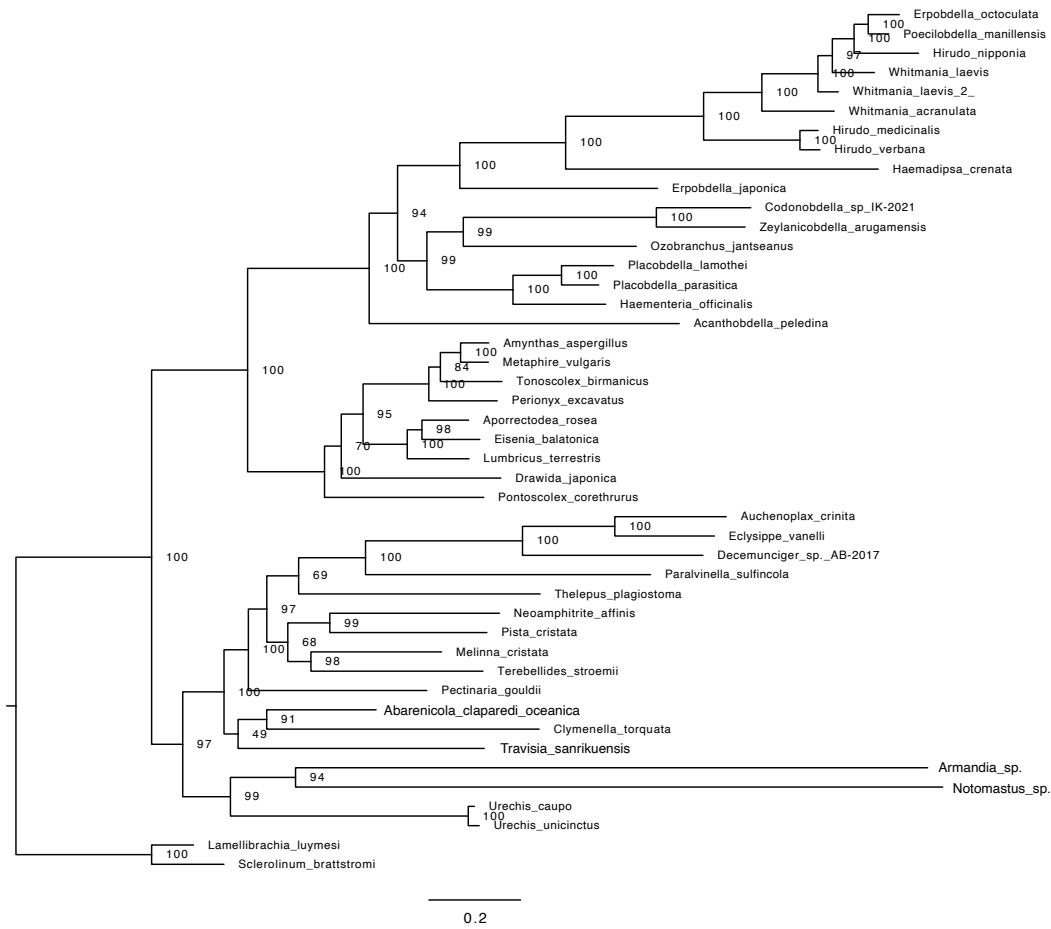
Supplementary Figure 2. Maximum likelihood phylogeny of a subset of Sedentaria based on the dataset including the nucleotide sequences of 13 PCGs and 2 rRNAs (nucPR).



Supplementary Figure 3. Maximum likelihood phylogeny of a subset of Sedentaria based on the dataset including the nucleotide sequences of 13 PCGs and 2 rRNAs after ambiguous positions excluded (nucPRt).



Supplementary Figure 4. Maximum likelihood phylogeny of a subset of Sedentaria based on the dataset including the amino acid sequences of 13 PCGs (aaP).



Supplementary Figure 5. Maximum likelihood phylogeny of a subset of Sedentaria based on the dataset including the amino acid sequences of 13 PCGs after ambiguous positions excluded (aaPt).