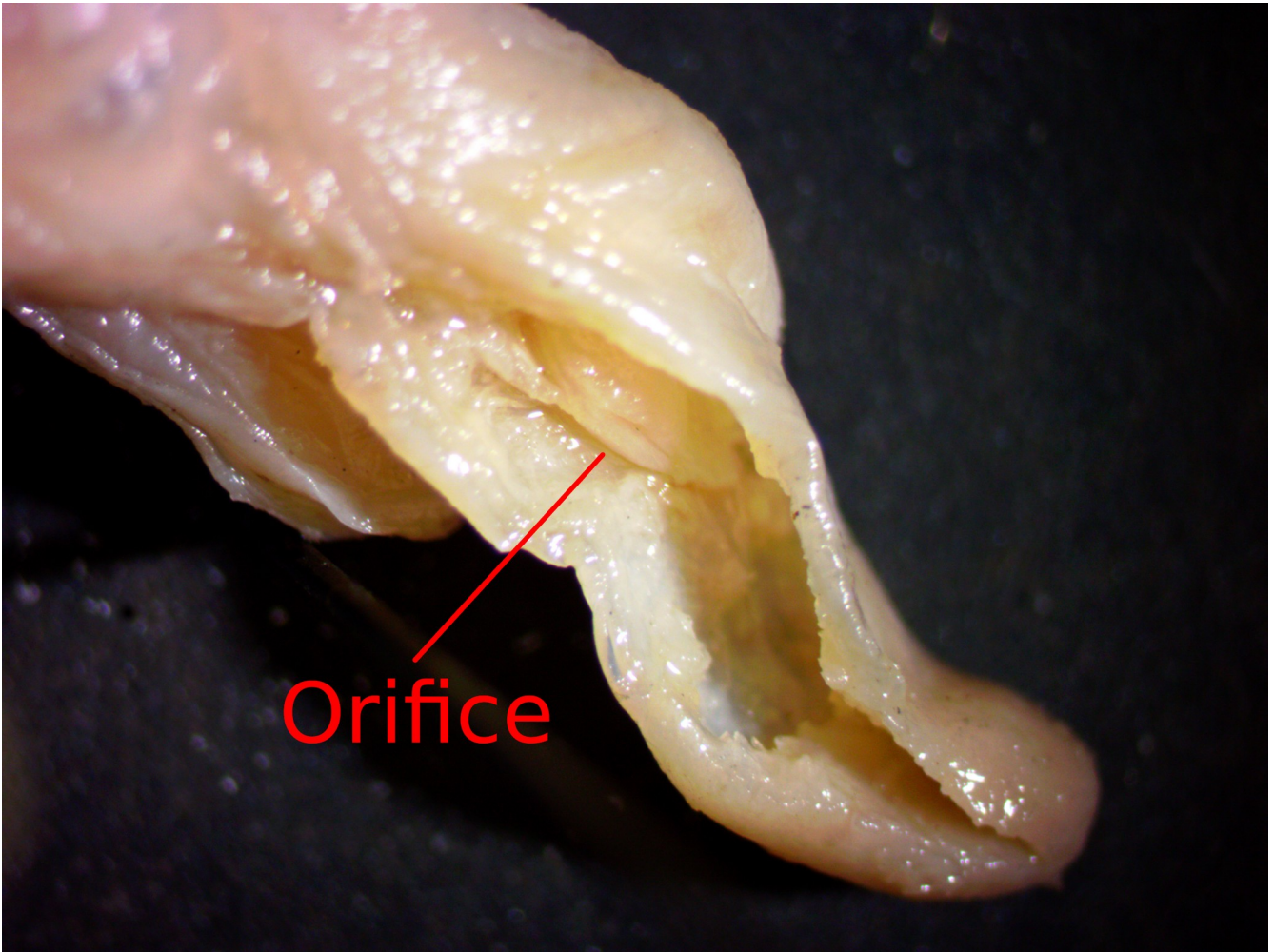


Supplemental Images



*Figure S1: Image of interior of the pseudophallus showing the orifice connecting the spermatophoric duct to the anteromedial chamber of the pseudophallus in Burrows Bay octopus.*

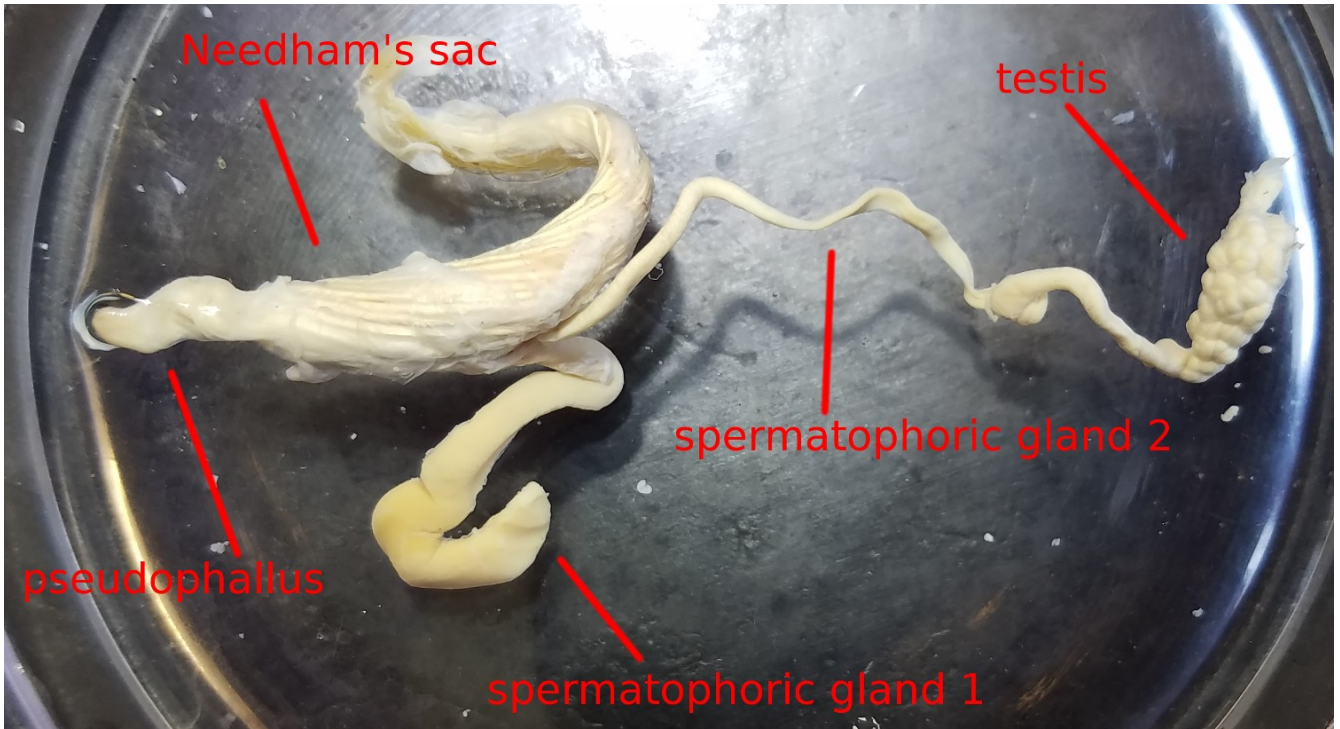


Figure S2: Images of extracted male reproductive tract of Burrow Bay octopus (CASIZ 236693-C)

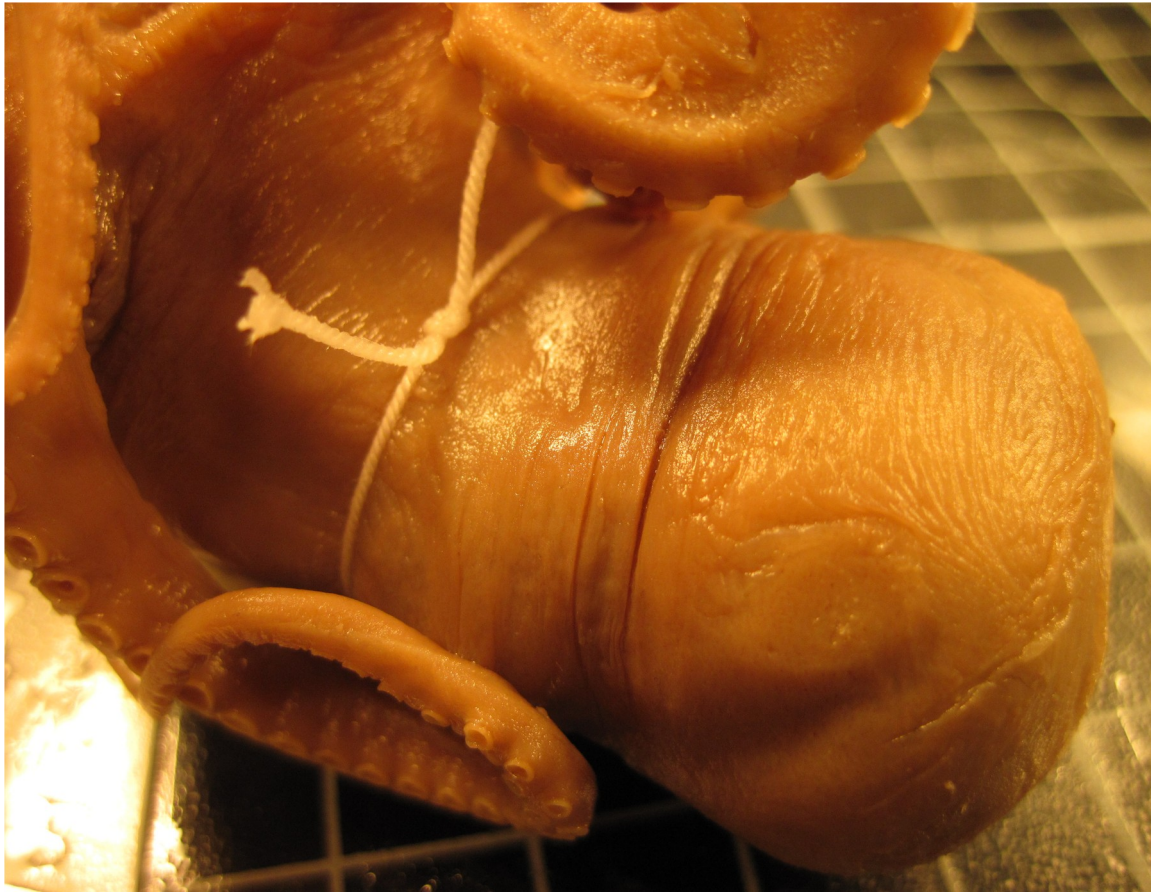
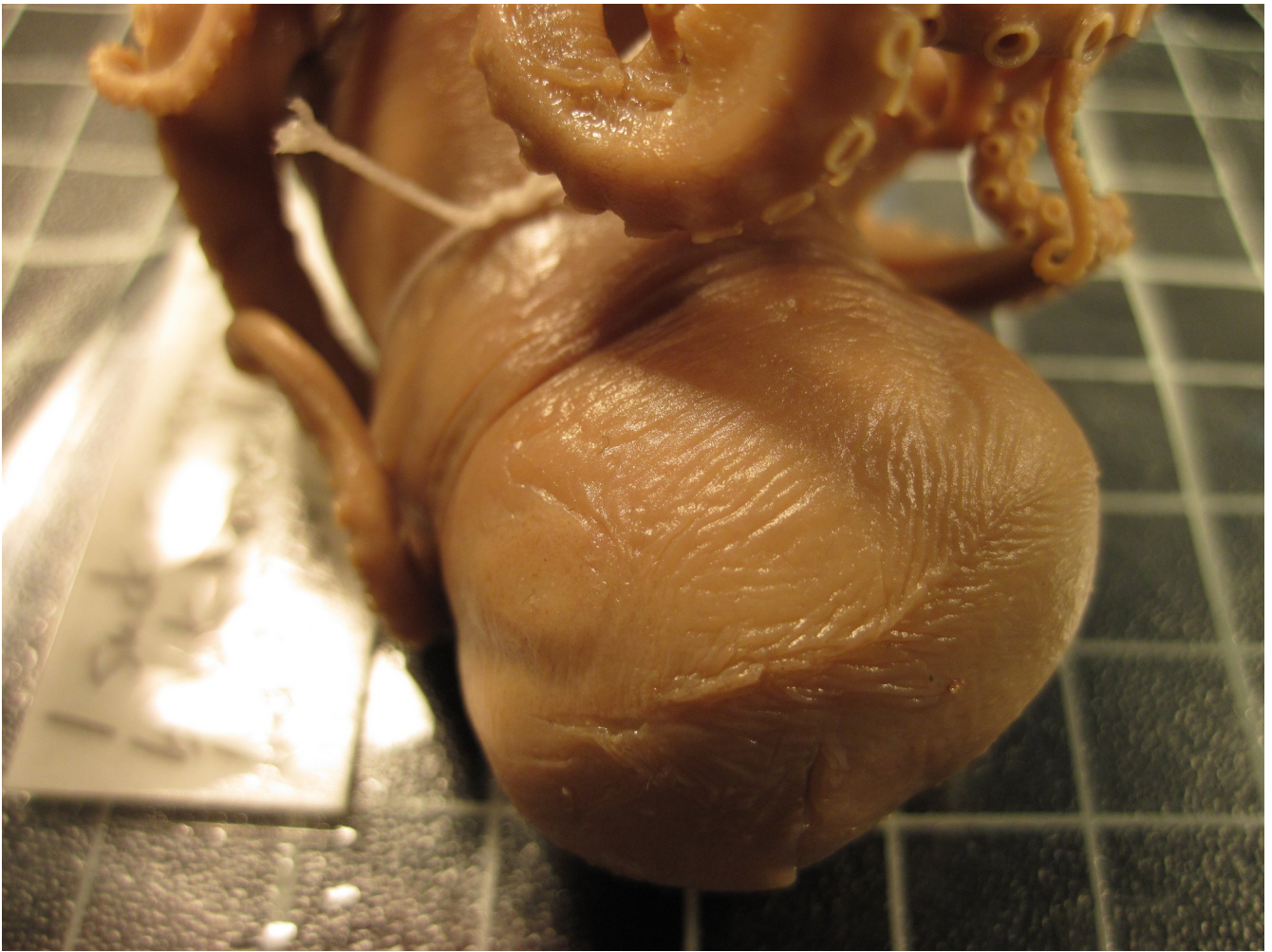


Figure S3: Image of neotype of *Muusoctopus leioderma*. Image taken by Christina Piotrowski.





*Figure S4: Image of neotype of Muusoctopus leioderma. Image taken by Christina Piotrowski.*



*Figure S5: Lateral view of Burrows Bay octopus (CASIZ 236693-C).*



*Figure S6: Dorsal view of Burrows Bay octopus (CASIZ 236693-C).*





*Figure S7: Lateral view of Burrows Bay octopus (CASIZ 236693-B).*



*Figure S8: Ventral view of Burrows Bay octopus (CASIZ 236693-B).*



*Figure S9: Dorsal view of Burrows Bay octopus (CASIZ 236693-A).*



*Figure S10: Ventral view of Burrows Bay octopus (CASIZ 236693-A).*





*Figure S11: Needhams sac of Burrows Bay octopus (CASIZ 236693-A).*





*Figure S12: Image of spermatophores from Burrows Bay octopus (CASIZ 236693-A) taken under a dissecting scope.*