

## **Supplementary Material**

### **Widespread occurrence of fibrous ferrierite in the rhyolitic tuffs at Lovelock, Nevada (U.S.A).**

ALESSANDRO ZOBOLI<sup>1</sup>, DARIO DI GIUSEPPE<sup>1\*</sup>, CECILIA BARALDI<sup>2</sup>, MARIA CRISTINA GAMBERINI<sup>2</sup>, DANIELE Malferrari<sup>1</sup>, GIANCARLO URSO<sup>3</sup>, MAGDALENA LASSINANTTI GUALTIERI<sup>4</sup>, MARK BAILEY<sup>5</sup> AND ALESSANDRO F. GUALTIERI<sup>1</sup>

<sup>1</sup>Department of Chemical and Geological Sciences, University of Modena and Reggio Emilia, Via Campi 103, Modena, I-41125, Italy.

<sup>2</sup>Department of Life Sciences, University of Modena and Reggio Emilia, via Campi 103, Modena, I-41125, Italy.

<sup>3</sup>Centro Interdipartimentale Grandi Strumenti, CIGS, University of Modena and Reggio Emilia, via Campi 185, Modena, I-41125, Italy.

<sup>4</sup>Department of Engineering "Enzo Ferrari", University of Modena and Reggio Emilia, I-41125, Modena, Italy.

<sup>5</sup> Asbestos TEM Laboratories, 600 Bancroft Way, Suite A, Berkeley, California, 94710, USA.

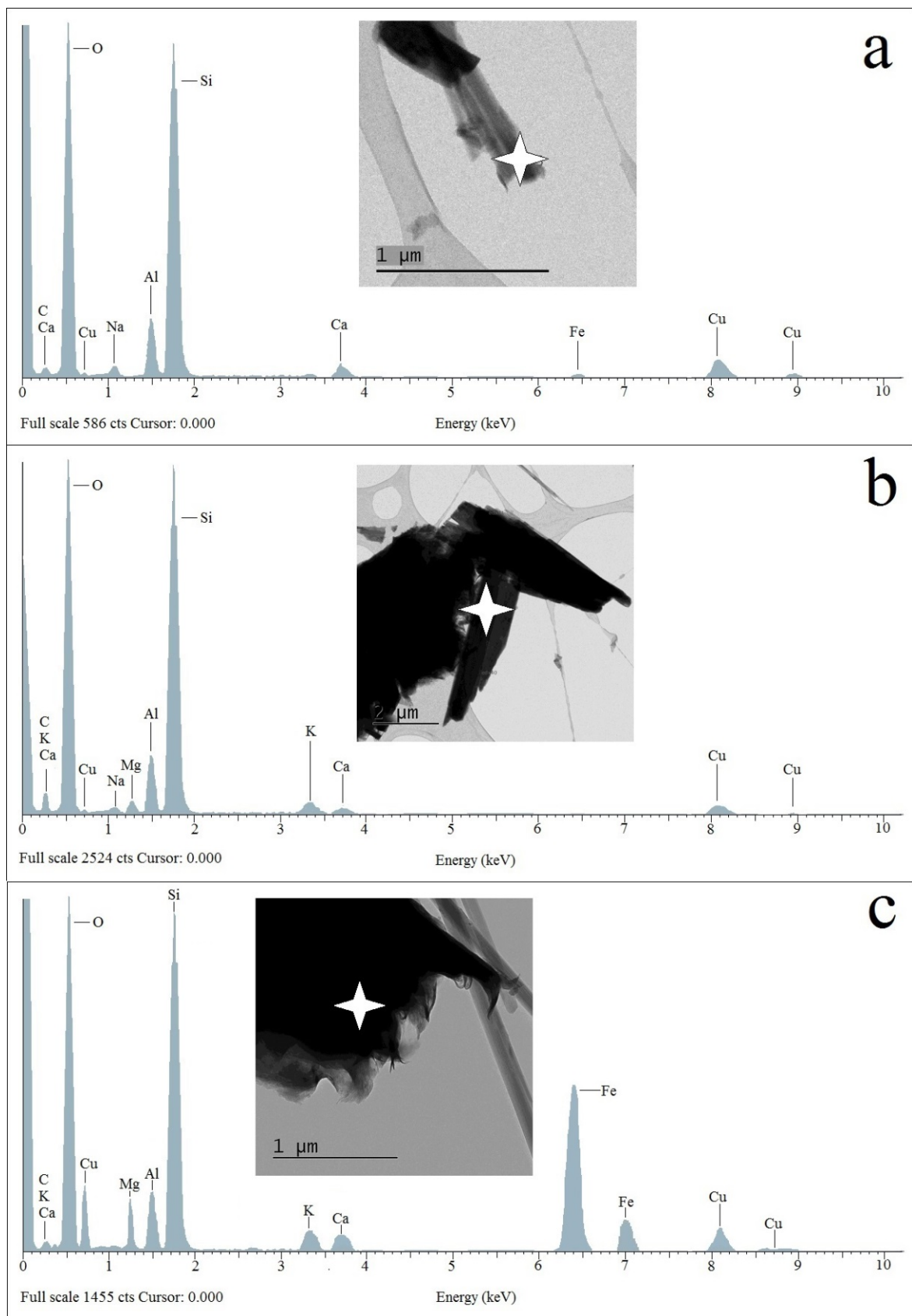


FIG.S1. TEM-EDS spectra and microphotographs: (a) mordenite fibres of sample 4; (b) aggregates of fibrous ferrierite of sample 2; (c) fibres aggregate embedded into a phyllosilicates matrix.