

**Impacts of anthropogenic land-use change on populations of the Endangered Patagonian cypress *Fitzroya cupressoides* in southern Chile: implications for its conservation**

JAMES RODRÍGUEZ-ECHEVERRY, CRISTIAN ECHEVERRÍA and LAURA NAHUELHUAL

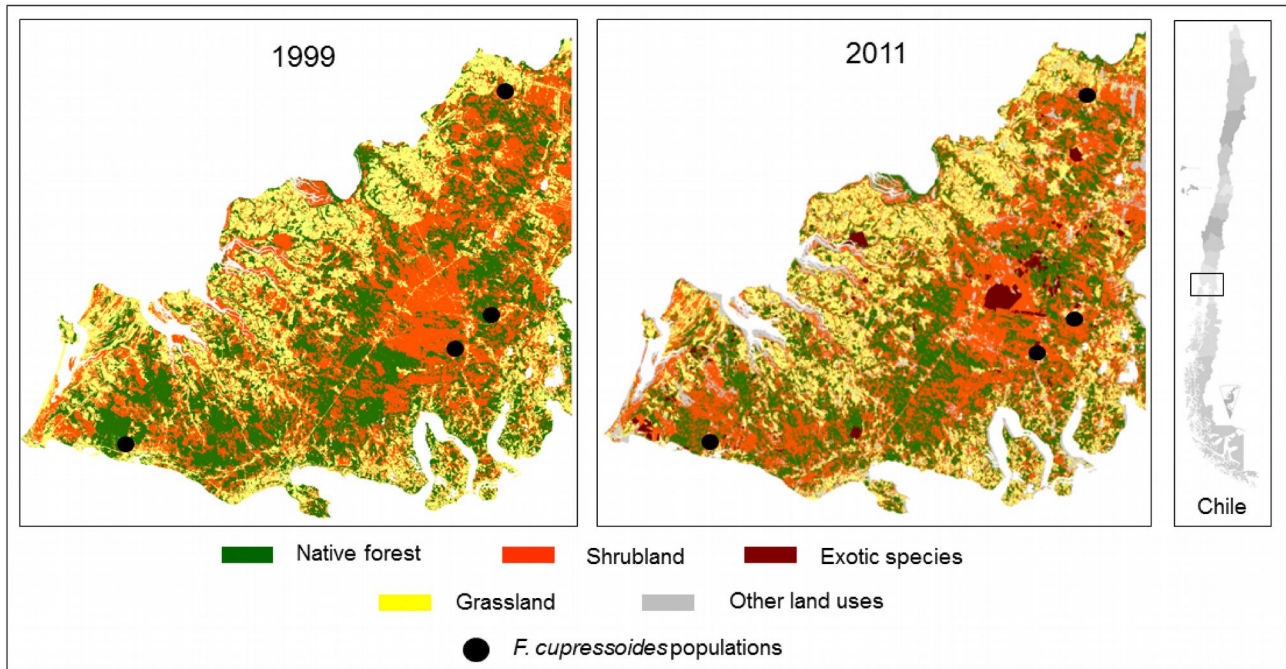


FIG. S1 Patterns of land-use in 1999 and 2011 in the vicinity of the four *Fitzroya cupressoides* populations studied in 2011.