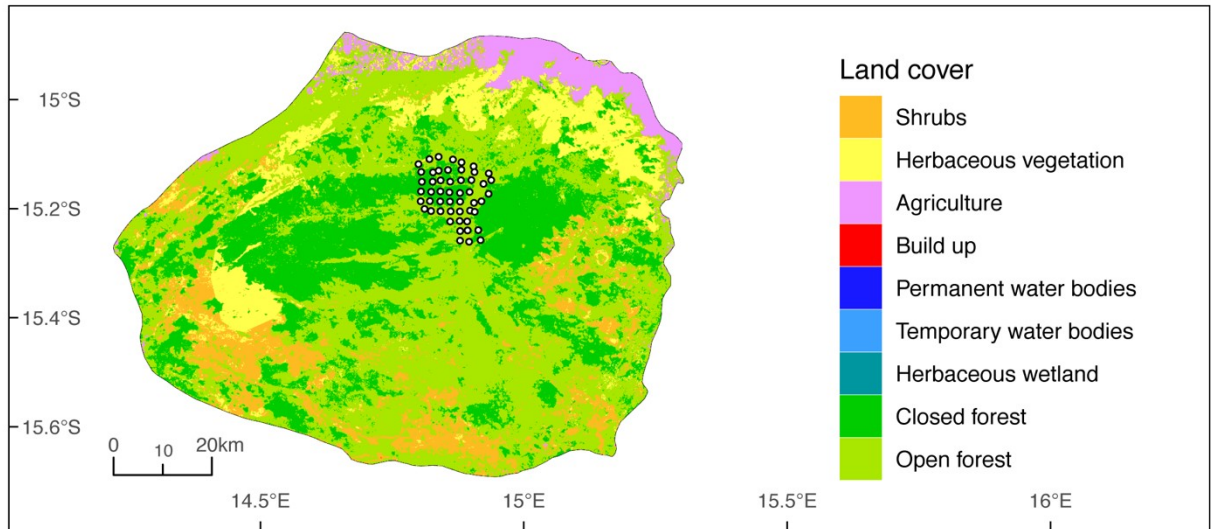
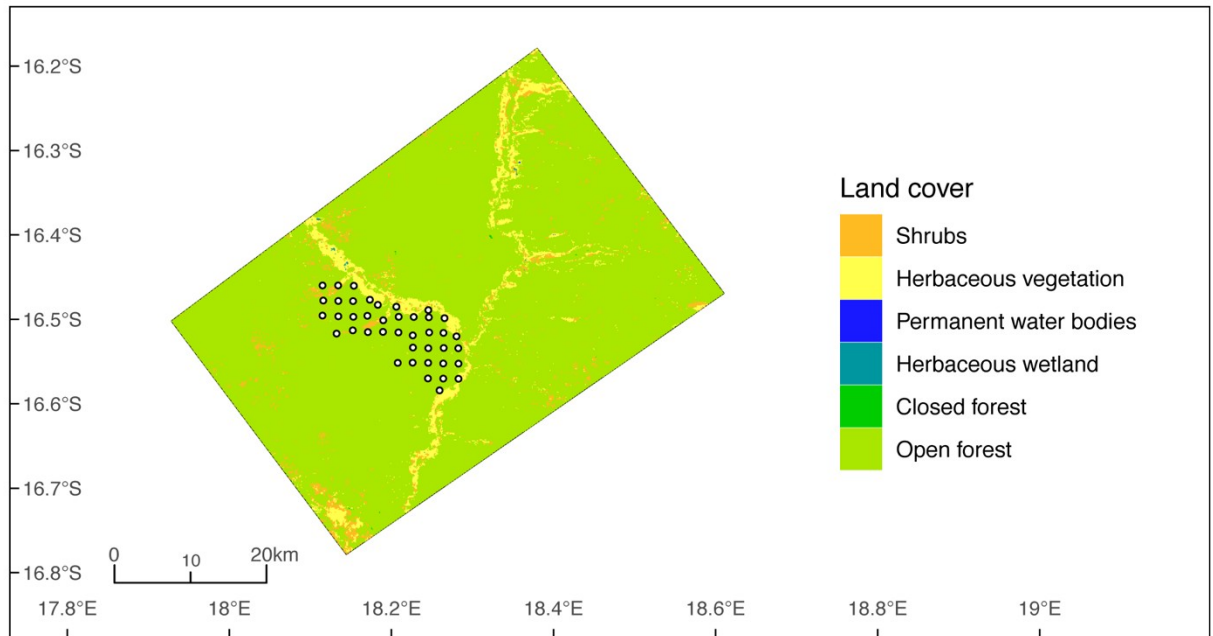


Updated ranges of the Vulnerable cheetah and Endangered African wild dog in Angola

PEDRO MONTERROSO, FILIPE ROCHA, STEFAN VAN WYK, TELMO ANTÓNIO, MILCÍADES CHICOMO, SELMA KOSMAS, FERNANDA LAGES, EZEQUIEL FABIANO and RAQUEL GODINHO



SUPPLEMENTARY FIG. 1 Locations of camera traps in Bicular National Park, Angola (Fig. 1), with 2015 land cover at 100 m resolution (Buchhorn et al., 2015).



SUPPLEMENTARY FIGURE 2 Locations of camera traps in Cuatir Private Reserve, Angola (Fig. 1), with 2015 land cover at 100 m resolution ([Buchhorn et al., 2015](#))

Reference

BUCHHORN, M., SMETS, B., BERTELS, L., LESIV, M., TSENDBAZAR, N.-E., HEROLD, M. & FRITZ, S. (2015) *Copernicus Global Land Service: Land Cover 100 m: Epoch 2015: Globe. Dataset of the Global Component of the Copernicus Land Monitoring Service 2019*. [Http://land.copernicus.eu/global/products/lc](http://land.copernicus.eu/global/products/lc) [accessed 14 November 2019].