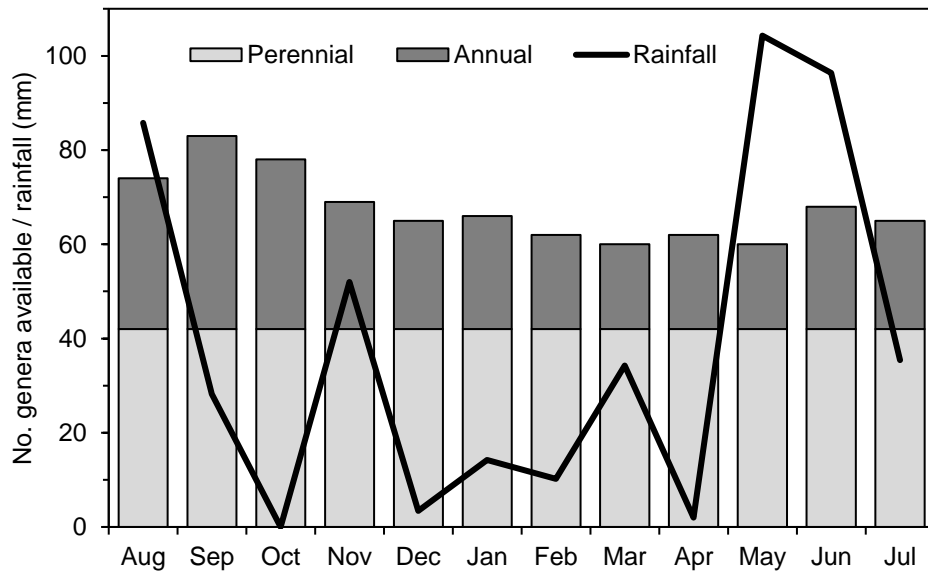
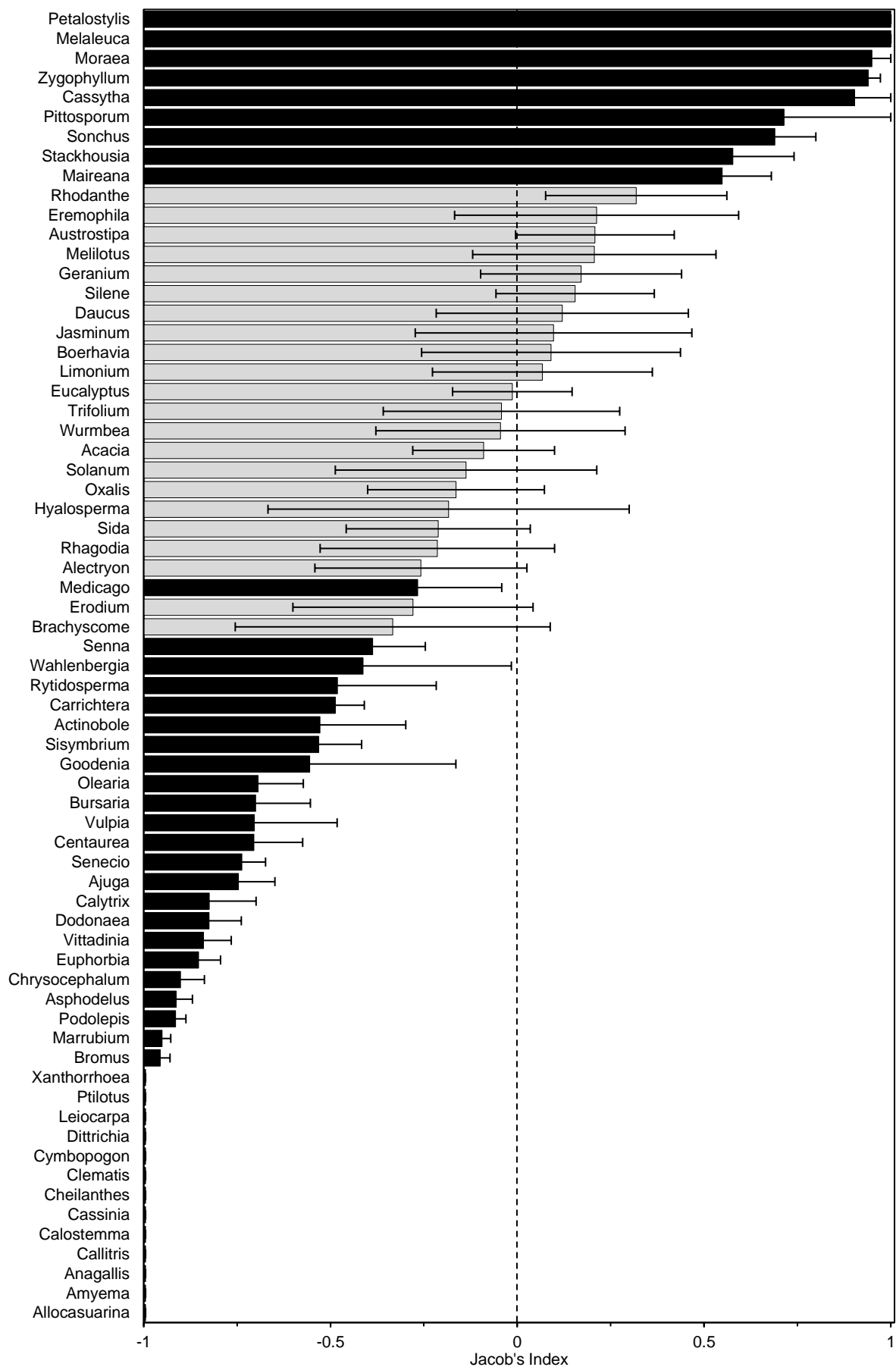


Time to adjust: changes in the diet of a reintroduced marsupial after release

HANNAH BANNISTER, ADAM CROXFORD, ROBERT BRANDLE, DAVID C. PATON and KATHERINE MOSEBY



SUPPLEMENTARY FIG. 1 Rainfall and the number of genera available per month during the study period, August 2015–July 2016. The number of annuals available was not significantly related to rainfall in the preceding month, but there was a positive trend.



SUPPLEMENTARY FIG. 2 Selectivity preferences for genera within the possums' diet, averaged across the 12 month study period, where negative values indicate selectivity against a genera and positive values indicate preference; a value of zero suggests consumption at the same rate as availability. Dots represent the mean Jacob's Index value for the genera across the study period. *Value significantly deviates from zero, noting that genera detected in <5% of both scats and vegetation surveys were not tested for statistical significance.

SUPPLEMENTARY TABLE 1 Plant species included in the DNA barcode reference library. Bold text indicates bait (apple, peanut butter and oats).

<i>Abutilon leucopetalum</i>	<i>Callistemon teretifolius</i>	<i>Eucalyptus flindersii</i>	<i>Morea setifolia</i>	<i>Senecio quadridentatis</i>
<i>Abutilon otocarpum</i>	<i>Callitris glaucophylla</i>	<i>Eucalyptus intertexta</i>	<i>Myoporum montanum</i>	<i>Senna artemisioides</i>
<i>Acacia beckleri</i>	<i>Calostemma purpureum</i>	<i>Eucalyptus leptophylla</i>	<i>Neatostema apulum</i>	<i>Senna artemisioides petiolaris</i>
<i>Acacia calamifolia</i>	<i>Calotis</i> sp.	<i>Eucalyptus polybractea</i>	<i>Nicotiana velutina</i>	<i>Sida corrugata</i>
<i>Acacia continua</i>	<i>Calytrix tetragona</i>	<i>Eucalyptus porosa</i>	<i>Olearia decurrens</i>	<i>Silene nocturna</i>
<i>Acacia halliana</i>	<i>Carrichtera annua</i>	<i>Eucalyptus socialis</i>	<i>Olearia pimeleoides</i>	<i>Solanum nigrum</i>
<i>Acacia havilandiorum</i>	<i>Cassinia complanata</i>	<i>Euphorbia tannensis</i>	<i>Oxalis</i> sp.	<i>Solanum quadrilocatum</i>
<i>Acacia iteaphylla</i>	<i>Cassinia laevis</i>	<i>Exocarpos aphyllus</i>	<i>Petalostylis labicheoides</i>	<i>Solanum simile</i>
<i>Acacia ligulata</i>	<i>Cassytha</i> sp.	<i>Galium</i> sp.	<i>Phyllanthus saxosus</i>	<i>Sonchus oleraceus</i>
<i>Acacia pycnantha</i>	<i>Centaurea calcitrapa</i>	<i>Geranium</i> sp.	<i>Pimelea micrantha</i>	<i>Spyridium phlebophyllum</i>
<i>Acacia rigens</i>	<i>Centaurea lanatus</i>	<i>Glischrocaryon flavescens</i>	<i>Pimelea microcephala</i>	<i>Stackhousia monogyna</i>
<i>Acacia rivalis</i>	<i>Centaurea melitensis</i>	<i>Glycine canescens</i>	<i>Pimelea simplex</i>	<i>Stuartina muelleri</i>
<i>Acacia tetragonophylla</i>	<i>Centaureium tenuifolium</i>	<i>Glycine rubiginosa</i>	<i>Pimelea stricta</i>	<i>Teucrium corymbosum</i>
<i>Acacia victoriae</i>	<i>Centipeda crateriformis</i>	<i>Goodenia albiflora</i>	<i>Pittosporum angustifolium</i>	<i>Teucrium racimosum</i>
<i>Acaena</i> sp.	<i>Cheilanthes</i> sp.	<i>Goodenia fascicularis</i>	<i>Plantago varia</i>	<i>Thysanotus baueri</i>
<i>Actinobole uliginosum</i>	<i>Chrysocephalum semipapposum</i>	<i>Gypsophila tubulosa</i>	<i>Pleurosorus rutifolius</i>	<i>Trifolium angustifolium</i>
<i>Aira cupaniana</i>	<i>Clematis microphylla</i>	<i>Hyalosperma glutinosum</i>	<i>Podolepis capillaris</i>	<i>Trifolium arvense</i>
<i>Ajuga australis</i>	<i>Crepis</i> sp.	<i>Hybanthus floribundus</i>	<i>Pomax umbellata</i>	<i>Trifolium campestre</i>
<i>Alectryon oleifolius</i>	<i>Cymbopogon ambiguus</i>	<i>Indigofera australis</i>	<i>Prostanthera striatiflora</i>	<i>Trifolium</i> sp.
<i>Allocauarina muellariana</i>	<i>Cyperus alterniflorus</i>	<i>Isoetopsis graminifolia</i>	<i>Pterocaulon sphacelatum</i>	<i>Trifolium tormentosum</i>
<i>Allocauarina</i> sp.	<i>Daucus glochidiatus</i>	<i>Jasminum didymum</i>	<i>Ptilotus obovatus</i>	<i>Triodia</i> sp.
<i>Allocauarina verticillata</i>	<i>Daviesia</i> spp.	<i>Lavatera plebia</i>	<i>Ptilotus spathulatus</i>	<i>Triptilodiscus pygmaeus</i>
<i>Amyema miquelii</i>	<i>Dianella revoluta</i>	<i>Leiocarpa semicalva</i>	<i>Rhagodia parabolica</i>	<i>Vittadinia blackii</i>
<i>Amyema preissii</i>	<i>Dichelachne rara</i>	<i>Leiocarpa websteri</i>	<i>Rhodanthe polygalifolia</i>	<i>Vittadinia gracilis</i>
<i>Anagallis arvensis</i>	<i>Dittrichia graveolens</i>	<i>Limonium lobatum</i>	<i>Rhodanthe pygmaea</i>	<i>Vittadinia</i> spp.
<i>Arachis hypogaea</i>	<i>Dodonaea baueri</i>	<i>Lophochloa</i> sp.	<i>Rhodanthe stricta</i>	<i>Vulpia bromoides</i>
<i>Austrostipa nodosa</i>	<i>Dodonaea lobulata</i>	<i>Lysiana exocarpi</i>	<i>Rostraria pumila</i>	<i>Vulpia muralis</i>
<i>Austrostipa scabra</i>	<i>Dodonaea viscosa</i>	<i>Maireana enchylaenoides</i>	<i>Rytidosperma caespitosa</i>	<i>Vulpia myuros</i>
<i>Austrostipa</i> sp.	<i>Eragrostis</i> sp.	<i>Malus domestica</i>	<i>Santalum acuminatum</i>	<i>Wahlenbergia</i> sp.
<i>Avena sativa</i>	<i>Eremophila alternifolia</i>	<i>Marrubium vulgare</i>	<i>Santalum lanceolatum</i>	<i>Wurmbea</i> sp.
<i>Boerhavia</i> sp.	<i>Eremophila longifolia</i>	<i>Melaleuca lanceolata</i>	<i>Senecio glossanthus</i>	<i>Xanthorrhoea quadrangulata</i>
<i>Brachyscome ciliaris</i>	<i>Erodium</i> sp.	<i>Melilotus indicus</i>	<i>Senecio lautus</i>	<i>Xerochrysum bracteatum</i>
<i>Brachyscome</i> sp.	<i>Eucalyptus camaldulensis</i>	<i>Mentha satureioides</i>	<i>Senecio magnificus</i>	<i>Zygophyllum apiculatum</i>
<i>Bursaria spinosa</i>	<i>Eucalyptus dumosa</i>	<i>Millotia myosotidifolia</i>		

SUPPLEMENTARY TABLE 2 Composition of adult possum scats, by genera (mean % of number of reads per scat), using two different primers (*ndhJ* and *rbcL*).

Genus	August		September		October		November		December		January		February		March		April		May		June		July		Annual	
	<i>ndhJ</i>	<i>rbcL</i>	<i>ndhJ</i>	<i>rbcL</i>	<i>ndhJ</i>	<i>rbcL</i>	<i>ndhJ</i>	<i>rbcL</i>	<i>ndhJ</i>	<i>rbcL</i>	<i>ndhJ</i>	<i>rbcL</i>	<i>ndhJ</i>	<i>rbcL</i>	<i>ndhJ</i>	<i>rbcL</i>	<i>ndhJ</i>	<i>rbcL</i>	<i>ndhJ</i>	<i>rbcL</i>	<i>ndhJ</i>	<i>rbcL</i>	<i>ndhJ</i>	<i>rbcL</i>	<i>ndhJ</i>	<i>rbcL</i>
Eucalyptus	32.1	17.9	19.9	4.8	52.6	14.2	30.4	5.2	22.9	2.8	70.7	4.5	46.5	17.6	26.1	1.1	52.9	2.2	27.3	0.0	31.7	3.7	32.7	26.6	38.1	8.8
Petalostylis	0.0	1.8	0.0	3.5	0.0	27.2	0.0	12.0	4.3	29.8	5.9	82.4	0.0	22.8	0.0	6.3	0.6	48.4	17.9	86.7	14.0	67.6	1.9	16.4	3.2	32.2
Callitris	1.7	20.9	11.7	52.1	0.8	16.2	5.9	30.4	0.9	17.1	0.1	0.5	0.3	0.6	0.1	9.2	0.1	2.0	0.4	1.5	1.8	7.9	6.2	21.5	3.2	18.4
Silene	1.8	4.2	10.8	7.5	1.4	1.4	3.3	3.2	20.6	9.7	1.7	0.0	1.5	3.4	34.2	31.0	18.7	18.9	1.0	0.3	0.0	0.0	3.6	1.9	6.7	5.4
Maireana	6.0	4.0	6.7	0.7	2.9	2.8	10.8	3.1	2.5	0.3	1.8	0.0	3.8	4.1	1.3	0.3	4.0	0.3	7.0	0.0	12.8	12.7	4.7	2.9	5.5	2.5
Trifolium	0.0	0.0	0.0	0.2	0.0	1.2	0.0	0.0	31.3	0.1	33.3	1.7	0.0	0.0	0.0	0.0	0.0	1.7	23.5	0.2	0.0	0.7	0.0	0.0	6.9	0.5
Melaleuca	0.0	10.3	0.0	4.1	0.9	8.6	1.3	5.8	2.8	1.4	3.2	1.6	0.0	10.8	0.0	1.6	0.0	0.2	0.2	1.0	5.0	8.5	10.1	5.5	1.9	5.2
Acacia	0.0	0.0	0.4	2.3	0.9	6.1	1.6	1.4	4.1	0.9	4.2	0.1	0.6	7.0	4.1	15.4	3.4	8.1	17.7	0.2	15.5	0.0	0.3	0.0	3.6	2.8
Stackhousia	4.2	0.0	7.1	0.0	9.9	0.0	1.4	0.1	5.5	0.0	1.1	0.0	9.8	0.0	7.7	0.0	5.0	0.0	0.4	0.0	0.1	0.0	6.8	0.0	4.9	0.0
Senna	1.1	1.0	4.0	5.1	3.3	2.7	6.8	4.4	7.9	7.9	0.0	0.0	0.0	0.7	0.9	1.8	0.0	0.2	0.8	0.0	0.3	0.7	0.1	0.1	2.3	2.2
Sisymbrium	1.7	0.9	1.0	0.5	5.4	2.3	1.2	0.6	0.1	0.0	0.5	0.0	11.0	9.4	10.3	19.6	0.1	0.1	0.3	0.0	0.0	0.0	3.7	0.7	2.4	1.8
Sonchus	6.0	0.0	9.4	0.0	3.3	0.0	2.8	0.0	7.0	0.0	1.4	0.0	0.7	0.0	3.0	0.0	1.8	0.0	0.9	0.0	1.6	0.0	1.0	0.0	3.7	0.0
Carrichtera	4.3	3.3	0.4	0.1	0.5	0.1	0.3	0.1	0.1	0.0	0.2	0.0	1.2	0.3	0.1	0.2	0.5	0.0	5.8	1.2	0.3	0.2	11.1	11.7	1.9	1.4
Zygophyllum	3.4	0.0	2.1	0.0	0.9	0.9	3.0	0.5	3.2	0.8	0.4	2.5	0.9	1.0	1.4	0.1	0.5	1.1	1.3	2.8	3.7	1.5	0.0	0.1	1.7	0.9
Solanum	0.0	0.0	1.8	0.0	5.8	0.8	0.0	0.0	0.0	0.0	0.0	0.0	6.8	6.4	0.0	0.0	0.0	0.0	0.0	0.0	10.5	0.0	0.0	0.0	2.1	0.5
Oxalis	0.0	2.6	0.0	2.6	0.0	3.0	0.0	0.5	0.0	2.1	0.0	0.0	0.0	7.1	0.0	1.2	0.0	4.1	0.0	0.0	0.0	0.1	0.0	1.5	0.0	2.0
Austrostipa	0.0	1.7	0.0	1.9	0.0	3.9	0.0	5.6	0.0	3.0	0.0	0.1	0.0	3.2	0.0	1.3	0.0	1.1	0.0	0.0	0.0	0.3	0.0	0.4	0.0	2.0
Geranium	0.0	2.3	0.0	2.7	0.0	1.6	0.0	5.9	0.0	3.1	0.0	0.0	0.0	0.1	0.0	2.3	0.0	1.2	0.0	0.0	0.0	0.0	0.0	1.8	0.0	1.9
Cassythia	0.0	0.7	0.0	0.4	0.0	2.2	0.0	1.9	0.0	15.2	0.0	0.4	0.0	0.8	0.0	5.6	0.0	0.3	0.0	0.1	0.0	0.1	0.0	0.0	0.0	1.8
Senecio	3.4	0.0	5.1	0.0	0.9	0.0	1.4	0.0	0.2	0.0	0.2	0.0	0.9	0.0	0.0	0.0	0.2	0.0	0.7	0.0	0.2	0.0	3.0	0.0	1.7	0.0
Centaurea	2.5	0.3	0.5	0.0	0.0	0.0	0.0	0.0	0.1	0.0	0.1	0.0	1.0	0.0	0.1	0.0	0.1	0.0	0.0	0.0	0.0	0.0	5.8	6.1	0.8	0.5
Medicago	0.7	0.0	2.0	0.0	1.6	0.0	0.6	0.0	5.2	0.0	0.3	0.0	0.0	0.0	8.9	0.0	0.1	0.0	0.1	0.0	0.0	0.0	0.0	0.0	1.3	0.0
Rhodanthe	3.5	0.1	0.1	0.0	0.1	0.0	4.3	0.0	0.0	0.0	0.4	0.0	0.3	0.3	0.1	0.0	0.5	0.0	0.9	0.0	0.1	0.0	2.8	0.5	1.2	0.1
Moraea	7.2	0.0	1.5	0.0	0.1	0.0	0.8	0.2	0.1	0.0	0.0	0.0	0.1	0.0	0.0	0.0	0.1	0.0	0.0	0.0	0.1	0.1	1.7	0.0	1.2	0.0
Erodium	0.0	3.4	0.0	2.1	0.0	0.0	0.0	4.4	0.0	0.8	0.0	0.0	0.0	0.0	0.0	0.0	0.0	0.0	0.0	1.4	0.0	0.0	0.0	0.0	0.0	1.2
Limonium	0.1	0.0	2.1	0.6	0.1	0.0	4.9	0.3	3.2	0.7	0.0	0.0	0.0	0.0	0.0	0.0	0.0	0.0	0.1	0.0	0.0	0.0	0.0	0.0	1.0	0.2
Acaena	0.0	0.0	0.7	1.0	0.0	0.0	2.6	3.5	0.0	0.0	0.0	0.0	0.0	0.0	0.0	0.0	3.2	0.0	0.0	0.0	0.0	0.0	0.0	0.0	0.3	0.7
Actinobole	1.9	0.0	0.7	0.0	2.1	0.1	1.6	2.3	0.1	0.0	0.0	0.0	0.0	0.0	0.0	0.0	0.0	0.1	0.0	0.0	0.0	0.0	0.0	0.0	0.7	0.2
Pimelea	1.0	1.0	0.0	0.7	0.2	0.2	0.4	1.5	0.0	0.0	0.6	1.2	0.0	0.0	0.0	0.0	0.0	0.3	0.0	0.1	0.0	0.0	0.7	0.5	0.3	0.6
Daucus	2.2	0.0	0.3	0.0	0.2	0.0	0.2	0.0	3.1	0.0	0.0	0.0	0.0	0.0	0.0	0.0	0.0	0.0	0.1	0.0	0.0	0.0	2.9	0.0	0.7	0.0
Wurmbea	3.2	2.1	0.2	0.1	0.0	0.0	0.0	0.0	0.0	0.0	0.0	0.0	0.2	0.0	0.0	0.0	0.1	0.0	0.7	0.0	0.0	0.0	0.1	0.1	0.4	0.2
Sida	0.8	0.0	0.1	0.0	0.1	0.0	0.7	0.0	0.0	0.0	0.1	0.0	5.4	0.2	0.0	0.0	0.0	0.0	0.8	0.0	0.2	0.0	0.0	0.0	0.5	0.0
Vulpia	0.9	0.0	2.3	0.0	0.6	0.0	0.0	0.0	0.0	0.0	0.1	0.0	0.0	0.0	0.0	0.0	0.0	0.0	0.0	0.0	0.0	0.0	0.0	0.0	0.5	0.0
Rhagodia	0.7	1.9	0.0	0.1	0.1	0.1	0.1	0.1	0.0	0.0	0.0	0.0	1.2	2.3	0.0	0.0	0.0	0.0	0.0	0.0	0.0	0.0	0.0	0.0	0.1	0.4
Avena	0.2	0.0	0.6	0.0	0.3	0.0	0.0	0.0	0.2	0.0	1.2	0.0	0.0	0.0	0.0	0.0	0.6	0.0	0.2	0.0	1.9	0.0	0.0	0.0	0.5	0.0

<i>S. table 2 cont.</i>	August		September		October		November		December		January		February		March		April		May		June		July		Annual	
Genus	ndhJ	rbCL	ndhJ	rbCL	ndhJ	rbCL	ndhJ	rbCL	ndhJ	rbCL	ndhJ	rbCL	ndhJ	rbCL	ndhJ	rbCL	ndhJ	rbCL	ndhJ	rbCL	ndhJ	rbCL	ndhJ	rbCL	ndhJ	rbCL
Olearia	0.6	0.0	0.4	0.0	0.0	0.0	2.0	0.0	0.7	0.0	0.0	0.0	0.7	0.0	0.0	0.0	0.0	0.0	1.0	0.0	0.2	0.0	0.0	0.0	0.5	0.0
Millotia	0.0	0.0	0.1	0.0	0.0	0.0	0.0	0.0	0.0	0.0	0.0	0.0	0.0	0.0	0.0	0.0	3.5	2.3	0.0	0.0	0.0	0.0	0.0	0.0	0.3	0.2
Pittosporum	0.0	0.0	0.0	0.0	0.0	0.0	0.0	0.0	0.0	0.3	0.0	1.7	0.0	0.0	0.0	0.0	0.0	1.6	0.0	0.6	0.0	0.4	0.0	0.0	0.4	0.0
Euphorbia	0.1	0.0	0.2	0.0	0.0	0.0	3.1	0.4	0.0	0.0	0.0	0.0	0.0	0.0	0.0	0.0	0.1	0.0	0.0	0.0	0.0	0.0	0.0	0.0	0.3	0.0
Vittadinia	1.4	1.3	0.0	0.0	0.1	0.0	0.1	0.0	0.0	0.0	0.0	0.0	0.0	0.0	0.0	0.0	0.0	0.0	0.1	0.0	0.0	0.0	0.0	0.9	0.2	0.2
Hybanthus	0.0	0.0	0.0	0.0	0.2	2.2	0.0	0.0	0.0	0.0	0.0	0.1	0.0	0.0	0.0	0.0	0.0	0.1	0.1	0.3	0.0	0.1	0.0	0.1	0.0	0.3
Lysiana	0.0	0.1	0.0	1.5	0.0	0.0	0.0	0.0	0.0	0.6	0.0	0.2	0.0	0.0	0.0	0.0	0.0	0.4	0.0	0.0	0.0	0.0	0.0	0.0	0.0	0.3
Jasminum	0.0	0.0	0.0	0.0	0.0	0.0	0.0	0.0	0.4	0.0	0.5	0.0	0.0	0.0	0.0	0.0	0.0	0.0	2.2	0.0	1.3	0.0	0.0	0.0	0.3	0.0
Podolepis	0.1	0.0	0.8	0.0	0.1	0.0	1.6	0.0	0.0	0.0	0.1	0.0	0.2	0.0	0.0	0.0	0.0	0.0	0.0	0.0	0.1	0.0	0.0	0.0	0.3	0.0
Dodonaea	0.0	0.0	0.2	0.0	0.2	0.0	0.0	0.0	0.2	0.0	0.2	0.0	1.0	0.0	0.0	0.0	0.8	0.0	0.5	0.0	0.5	0.0	0.0	0.0	0.3	0.0
Arachis	0.2	0.0	0.3	0.0	0.5	0.0	0.2	0.0	0.0	0.0	0.0	0.0	0.1	0.0	0.4	0.0	0.8	0.0	0.0	0.0	0.1	0.0	0.0	0.0	0.2	0.0
Eremophila	0.0	0.0	0.0	0.0	0.1	0.0	0.0	0.0	0.1	0.0	0.3	0.0	0.0	0.0	0.0	0.0	1.6	0.0	1.1	0.0	0.0	0.0	0.0	0.0	0.2	0.0
Asphodelus	0.0	0.0	0.0	0.0	1.5	0.0	0.0	0.0	0.0	0.0	0.1	0.0	0.5	0.0	0.0	0.0	0.0	0.0	0.1	0.0	0.0	0.0	0.0	0.0	0.2	0.0
Malus	0.0	0.0	0.1	0.0	0.2	0.0	0.6	0.0	0.0	0.0	0.0	0.0	2.2	0.0	0.0	0.0	0.1	0.0	0.0	0.0	0.0	0.0	0.0	0.0	0.2	0.0
Marrubium	1.2	0.0	0.2	0.1	0.0	0.0	0.0	0.0	0.2	0.0	0.2	0.0	0.4	0.0	0.0	0.0	0.0	0.0	0.1	0.0	0.0	0.0	0.0	0.0	0.2	0.0
Ajuga	0.0	0.0	0.3	0.0	0.1	0.0	0.1	0.0	0.0	0.0	0.1	0.0	0.0	0.0	0.0	0.0	0.0	0.0	0.5	0.0	1.0	0.0	0.0	0.0	0.2	0.0
Melilotus	0.2	0.0	0.0	0.0	0.0	0.0	0.0	1.1	0.1	0.0	0.2	0.0	0.0	0.0	0.0	0.0	0.0	0.0	0.1	0.0	0.1	0.0	0.0	0.0	0.1	0.1
Teucrium	0.0	0.0	0.4	0.0	0.0	0.0	0.0	0.0	0.0	0.0	0.1	0.0	0.7	0.0	0.0	0.0	0.6	0.0	0.2	0.0	0.1	0.0	0.0	0.0	0.2	0.0
Boerhavia	0.0	0.0	0.0	0.2	0.0	0.2	0.5	0.2	0.0	0.0	0.0	0.0	0.0	0.0	0.0	0.2	0.0	0.0	0.0	0.0	0.2	0.0	0.0	0.0	0.1	0.1
Rytidosperma	0.8	0.0	0.4	0.0	0.0	0.0	0.0	0.0	0.0	0.0	0.0	0.0	0.0	0.0	0.0	0.0	0.0	0.0	0.2	0.0	0.0	0.0	0.0	0.0	0.1	0.0
Bromus	0.0	0.0	0.7	0.0	0.0	0.0	0.0	0.0	0.0	0.0	0.1	0.0	0.0	0.0	0.0	0.0	0.0	0.0	0.0	0.0	0.0	0.0	0.0	0.0	0.1	0.0
Crepis	0.0	0.3	0.0	0.4	0.0	0.2	0.0	0.0	0.0	0.0	0.0	0.0	0.0	0.0	0.0	0.0	0.0	0.0	0.0	0.0	0.0	0.0	0.0	0.0	0.0	0.1
Brachychiton	0.0	0.6	0.0	0.0	0.0	0.2	0.0	0.0	0.0	0.0	0.0	0.0	0.0	0.0	0.0	0.0	0.0	0.0	0.0	0.0	0.1	0.2	0.0	0.0	0.0	0.1
Bursaria	0.0	0.0	0.0	0.0	0.0	0.0	0.1	0.1	0.6	0.1	0.0	0.0	0.2	0.2	0.0	0.0	0.0	0.0	0.3	0.0	0.0	0.0	0.0	0.0	0.1	0.0
Wahlenbergia	0.3	0.2	0.2	0.0	0.0	0.0	0.0	0.0	0.0	0.0	0.0	0.0	0.0	0.0	0.0	0.0	0.0	0.0	0.0	0.0	0.0	0.0	0.0	0.0	0.1	0.0
Triodia	0.0	0.0	0.0	0.0	0.0	0.0	0.0	0.0	0.2	0.0	0.0	0.0	0.0	0.1	0.0	0.0	0.0	0.0	0.7	0.0	0.1	0.0	0.0	0.0	0.1	0.0
Heliotropium	0.0	0.0	0.0	0.0	0.1	0.0	0.0	0.0	0.1	0.0	0.0	0.0	0.0	0.0	0.0	0.0	0.7	0.0	0.0	0.0	0.0	0.0	0.0	0.0	0.1	0.0
Callistemon	0.0	0.0	0.0	0.0	0.0	0.0	0.0	0.0	0.0	0.0	0.1	0.0	0.3	0.0	0.0	0.0	0.1	0.0	0.2	0.0	0.0	0.0	0.0	0.0	0.1	0.0
Eragrostis	0.0	0.1	0.0	0.3	0.0	0.0	0.0	0.0	0.0	0.0	0.0	0.0	0.0	0.0	0.0	0.0	0.0	0.0	0.0	0.0	0.0	0.0	0.0	0.0	0.0	0.1
Lavatera	0.0	0.0	0.3	0.0	0.0	0.0	0.0	0.0	0.0	0.0	0.0	0.0	0.0	0.0	0.0	0.0	0.2	0.0	0.0	0.0	0.0	0.0	0.0	0.0	0.1	0.0
Isoetopsis	0.0	0.0	0.0	0.0	0.1	0.0	0.0	0.0	0.0	0.0	0.0	0.0	0.0	0.0	0.0	0.0	0.1	0.0	0.0	0.0	0.4	0.0	0.0	0.0	0.0	0.0
Alectryon	0.0	0.0	0.0	0.0	0.1	0.0	0.0	0.0	0.1	0.0	0.0	0.0	0.1	0.0	0.0	0.0	0.0	0.0	0.1	0.0	0.3	0.0	0.0	0.0	0.0	0.0
Chrysocephalum	0.2	0.0	0.1	0.0	0.0	0.0	0.0	0.0	0.0	0.0	0.0	0.0	0.0	0.0	0.0	0.0	0.0	0.0	0.1	0.0	0.0	0.0	0.0	0.0	0.0	0.0
Hyalosperma	0.0	0.0	0.2	0.0	0.0	0.0	0.0	0.0	0.0	0.0	0.1	0.0	0.0	0.0	0.0	0.0	0.0	0.0	0.1	0.0	0.0	0.0	0.0	0.0	0.0	0.0
Pleurosorus	0.0	0.0	0.0	0.0	0.0	0.0	0.0	0.0	0.0	0.7	0.0	0.0	0.0	0.0	0.0	0.0	0.0	0.0	0.0	0.0	0.0	0.0	0.0	0.0	0.0	0.0
Nicotiana	0.1	0.0	0.0	0.0	0.2	0.0	0.0	0.0	0.0	0.0	0.0	0.0	0.0	0.0	0.0	0.0	0.0	0.0	0.0	0.0	0.0	0.0	0.0	0.0	0.0	0.0
Myoporum	0.0	0.0	0.0	0.0	0.0	0.0	0.0	0.0	0.1	0.1	0.0	0.0	0.0	0.0	0.0	0.0	0.0	0.0	0.0	0.3	0.0	0.0	0.0	0.0	0.0	0.0

<i>S. table 2 cont.</i>		August		September		October		November		December		January		February		March		April		May		June		July		Annual		
Genus		<i>ndhJ</i>	<i>rbcl</i>	<i>ndhJ</i>	<i>rbcl</i>	<i>ndhJ</i>	<i>rbcl</i>	<i>ndhJ</i>	<i>rbcl</i>	<i>ndhJ</i>	<i>rbcl</i>	<i>ndhJ</i>	<i>rbcl</i>	<i>ndhJ</i>	<i>rbcl</i>	<i>ndhJ</i>	<i>rbcl</i>	<i>ndhJ</i>	<i>rbcl</i>	<i>ndhJ</i>	<i>rbcl</i>	<i>ndhJ</i>	<i>rbcl</i>	<i>ndhJ</i>	<i>rbcl</i>	<i>ndhJ</i>	<i>rbcl</i>	
Goodenia		0.0	0.0	0.0	0.0	0.2	0.0	0.0	0.0	0.0	0.0	0.0	0.0	0.0	0.0	0.0	0.0	0.1	0.0	0.0	0.0	0.0	0.0	0.0	0.0	0.0	0.0	0.0
Rostraria		0.0	0.0	0.0	0.0	0.0	0.2	0.0	0.1	0.0	0.0	0.0	0.0	0.0	0.0	0.0	0.0	0.0	0.0	0.0	0.0	0.0	0.0	0.0	0.0	0.0	0.0	0.0
Spyridium		0.0	0.0	0.1	0.0	0.0	0.0	0.0	0.0	0.0	0.0	0.0	0.0	0.0	0.0	0.0	0.0	0.0	0.0	0.3	0.0	0.0	0.0	0.0	0.0	0.0	0.0	0.0
Santalum		0.0	0.0	0.0	0.1	0.0	0.0	0.0	0.0	0.0	0.0	0.0	0.0	0.0	0.0	0.0	0.0	0.0	0.0	0.0	0.0	0.0	0.0	0.0	0.0	0.0	0.0	0.0
Gypsophila		0.2	0.0	0.0	0.0	0.0	0.0	0.0	0.0	0.0	0.0	0.0	0.0	0.0	0.0	0.0	0.0	0.0	0.0	0.0	0.0	0.0	0.0	0.0	0.0	0.0	0.0	0.0
Calytrix		0.0	0.0	0.0	0.0	0.0	0.0	0.0	0.0	0.0	0.0	0.0	0.0	0.0	0.0	0.0	0.0	0.0	0.1	0.0	0.0	0.0	0.0	0.0	0.0	0.0	0.0	0.0
Galium		0.0	0.0	0.0	0.0	0.0	0.0	0.0	0.0	0.0	0.0	0.0	0.0	0.0	0.0	0.0	0.0	0.0	0.1	0.0	0.0	0.0	0.0	0.0	0.0	0.0	0.0	0.0
Pterocaulon		0.0	0.0	0.0	0.0	0.0	0.0	0.0	0.0	0.0	0.0	0.0	0.0	0.0	0.0	0.0	0.0	0.0	0.1	0.0	0.1	0.0	0.0	0.0	0.0	0.0	0.0	0.0
Brachyscome		0.0	0.0	0.0	0.0	0.0	0.0	0.0	0.0	0.0	0.0	0.1	0.0	0.0	0.0	0.0	0.0	0.0	0.1	0.0	0.0	0.0	0.0	0.0	0.0	0.0	0.0	0.0
Prostanthera		0.0	0.0	0.0	0.0	0.0	0.0	0.0	0.0	0.0	0.0	0.0	0.0	0.0	0.0	0.0	0.0	0.0	0.1	0.0	0.0	0.0	0.0	0.0	0.0	0.0	0.0	0.0

SUPPLEMENTARY TABLE 3 Frequency of occurrence (% of scats containing the genus), detected via either of the two primer methods used (*ndhJ* or *rbcL*).

Genus	August	September	October	November	December	January	February	March	April	May	June	July	Annual
Eucalyptus	81.5	52.5	100.0	61.5	56.3	100.0	86.7	70.0	85.0	82.4	73.7	90.5	78.5
Petalostylis	51.9	45.0	97.0	69.2	62.5	100.0	93.3	50.0	95.0	100.0	73.7	33.3	72.3
Maireana	66.7	57.5	84.8	73.1	43.8	36.7	53.3	20.0	50.0	82.4	68.4	42.9	59.1
Zygophyllum	33.3	35.0	48.5	50.0	56.3	100.0	40.0	20.0	50.0	100.0	73.7	4.8	51.5
Callitris	55.6	95.0	45.5	76.9	68.8	16.7	26.7	50.0	25.0	52.9	21.1	38.1	50.7
Acacia	3.7	15.0	33.3	38.5	50.0	50.0	60.0	50.0	40.0	94.1	47.4	9.5	36.5
Silene	37.0	62.5	24.2	30.8	68.8	13.3	20.0	90.0	40.0	11.8	0.0	33.3	34.7
Austrostipa	40.7	37.5	72.7	61.5	37.5	3.3	60.0	40.0	20.0	0.0	5.3	4.8	33.6
Stackhousia	63.0	47.5	45.5	26.9	43.8	6.7	40.0	40.0	25.0	11.8	5.3	33.3	33.6
Melaleuca	25.9	27.5	54.5	30.8	31.3	13.3	60.0	20.0	5.0	41.2	31.6	38.1	31.4
Senna	37.0	52.5	33.3	42.3	50.0	3.3	33.3	40.0	5.0	23.5	10.5	14.3	29.6
Sonchus	44.4	40.0	27.3	26.9	56.3	10.0	13.3	30.0	25.0	17.6	5.3	19.0	27.0
Carrichtera	25.9	17.5	15.2	7.7	6.3	13.3	26.7	20.0	5.0	23.5	15.8	38.1	17.5
Pittosporum	0.0	2.5	0.0	0.0	25.0	70.0	0.0	0.0	45.0	52.9	21.1	0.0	17.5
Oxalis	37.0	25.0	21.2	7.7	31.3	0.0	40.0	10.0	15.0	0.0	5.3	9.5	17.2
Senecio	37.0	25.0	6.1	15.4	6.3	6.7	6.7	0.0	5.0	35.3	10.5	28.6	16.4
Medicago	11.1	35.0	24.2	11.5	56.3	10.0	0.0	20.0	5.0	5.9	0.0	0.0	16.1
Sisymbrium	22.2	22.5	18.2	19.2	6.3	10.0	33.3	30.0	5.0	11.8	0.0	14.3	16.1
Geranium	25.9	25.0	6.1	38.5	18.8	0.0	6.7	30.0	10.0	0.0	0.0	9.5	14.6
Trifolium	0.0	5.0	3.0	0.0	25.0	56.7	0.0	0.0	35.0	23.5	26.3	0.0	14.6
Moraea	29.6	30.0	3.0	30.8	12.5	0.0	6.7	0.0	5.0	0.0	10.5	4.8	13.1
Cassyltha	7.4	7.5	12.1	15.4	31.3	20.0	6.7	40.0	15.0	5.9	5.3	0.0	12.4
Rhodanthe	14.8	5.0	3.0	11.5	0.0	6.7	20.0	10.0	15.0	47.1	5.3	9.5	10.9
Avena	7.4	25.0	6.1	3.8	6.3	6.7	0.0	0.0	10.0	11.8	26.3	0.0	9.9
Erodium	22.2	22.5	0.0	19.2	18.8	0.0	0.0	0.0	0.0	17.6	0.0	0.0	9.5
Centaurea	33.3	12.5	0.0	0.0	6.3	3.3	6.7	10.0	5.0	0.0	0.0	28.6	9.1
Olearia	14.8	10.0	3.0	3.8	18.8	0.0	6.7	0.0	0.0	47.1	5.3	0.0	8.4
Wurmbea	40.7	5.0	0.0	0.0	0.0	0.0	6.7	0.0	5.0	35.3	0.0	9.5	8.4
Jasminum	0.0	0.0	0.0	0.0	18.8	16.7	0.0	0.0	0.0	58.8	21.1	0.0	8.0
Arachis	7.4	7.5	18.2	7.7	0.0	3.3	6.7	20.0	15.0	0.0	5.3	0.0	7.7
Dodonaea	0.0	7.5	6.1	0.0	12.5	10.0	6.7	0.0	5.0	41.2	10.5	0.0	7.7
Daucus	18.5	5.0	3.0	7.7	12.5	0.0	0.0	0.0	0.0	5.9	0.0	23.8	6.6
Sida	3.7	2.5	3.0	7.7	0.0	10.0	20.0	0.0	0.0	35.3	5.3	0.0	6.6
Ajuga	0.0	10.0	3.0	3.8	0.0	6.7	0.0	0.0	0.0	23.5	15.8	0.0	5.5
Limonium	7.4	10.0	3.0	15.4	12.5	0.0	0.0	0.0	0.0	11.8	0.0	0.0	5.5
Eremophila	0.0	0.0	3.0	0.0	6.3	6.7	0.0	0.0	10.0	47.1	0.0	0.0	5.1

<i>S. table 3 cont.</i>	August	September	October	November	December	January	February	March	April	May	June	July	Annual
Actinobole	7.4	10.0	3.0	15.4	6.3	0.0	0.0	0.0	0.0	5.9	0.0	0.0	4.7
Hybanthus	0.0	0.0	6.1	0.0	0.0	16.7	0.0	0.0	10.0	11.8	5.3	4.8	4.7
Pimelea	7.4	5.0	6.1	7.7	0.0	3.3	0.0	0.0	5.0	5.9	0.0	9.5	4.7
Boerhavia	0.0	7.5	9.1	11.5	0.0	0.0	0.0	10.0	0.0	0.0	10.5	0.0	4.4
Rytidosperma	18.5	10.0	3.0	0.0	0.0	0.0	0.0	0.0	0.0	11.8	0.0	0.0	4.4
Triodia	0.0	2.5	0.0	3.8	12.5	0.0	6.7	0.0	0.0	35.3	5.3	0.0	4.4
Vulpia	22.2	10.0	3.0	0.0	0.0	3.3	0.0	0.0	0.0	0.0	0.0	0.0	4.4
Lysiana	7.4	12.5	0.0	0.0	12.5	3.3	0.0	0.0	5.0	0.0	0.0	0.0	4.0
Teucrium	0.0	5.0	0.0	0.0	0.0	3.3	20.0	0.0	10.0	11.8	5.3	0.0	4.0
Rhagodia	11.1	2.5	6.1	11.5	0.0	0.0	6.7	0.0	0.0	0.0	0.0	0.0	3.6
Callistemon	0.0	2.5	3.0	0.0	0.0	3.3	13.3	0.0	5.0	17.6	0.0	0.0	3.3
Marrubium	3.7	7.5	0.0	0.0	6.3	3.3	13.3	0.0	0.0	5.9	0.0	0.0	3.3
Melilotus	3.7	0.0	0.0	7.7	6.3	6.7	0.0	0.0	0.0	11.8	5.3	0.0	3.3
Podolepis	3.7	7.5	3.0	3.8	0.0	3.3	6.7	0.0	0.0	0.0	5.3	0.0	3.3
Asphodelus	0.0	0.0	12.1	0.0	0.0	6.7	6.7	0.0	0.0	5.9	0.0	0.0	2.9
Bursaria	0.0	0.0	0.0	3.8	6.3	0.0	13.3	0.0	0.0	23.5	0.0	0.0	2.9
Solanum	0.0	2.5	9.1	0.0	0.0	0.0	13.3	0.0	0.0	0.0	10.5	0.0	2.9
Vittadinia	11.1	0.0	3.0	3.8	0.0	0.0	0.0	0.0	0.0	5.9	0.0	9.5	2.9
Malus	0.0	5.0	6.1	3.8	0.0	0.0	6.7	0.0	5.0	0.0	0.0	0.0	2.6
Alectryon	0.0	2.5	3.0	0.0	6.3	0.0	6.7	0.0	0.0	5.9	5.3	0.0	2.2
Brachychiton	14.8	0.0	3.0	0.0	0.0	0.0	0.0	0.0	0.0	0.0	5.3	0.0	2.2
Acaena	0.0	5.0	0.0	7.7	0.0	0.0	0.0	0.0	5.0	0.0	0.0	0.0	1.8
Chrysocephalum	7.4	2.5	0.0	0.0	0.0	0.0	0.0	0.0	0.0	11.8	0.0	0.0	1.8
Crepis	11.1	2.5	3.0	0.0	0.0	0.0	0.0	0.0	0.0	0.0	0.0	0.0	1.8
Bromus	3.7	5.0	0.0	0.0	0.0	3.3	0.0	0.0	0.0	0.0	0.0	0.0	1.5
Eragrostis	3.7	7.5	0.0	0.0	0.0	0.0	0.0	0.0	0.0	0.0	0.0	0.0	1.5
Euphorbia	3.7	2.5	0.0	3.8	0.0	0.0	0.0	0.0	5.0	0.0	0.0	0.0	1.5
Heliotropium	0.0	0.0	3.0	0.0	6.3	0.0	0.0	0.0	10.0	0.0	0.0	0.0	1.5
Hyalosperma	0.0	5.0	0.0	0.0	0.0	3.3	0.0	0.0	0.0	5.9	0.0	0.0	1.5
Lavatera	0.0	7.5	0.0	0.0	0.0	0.0	0.0	0.0	5.0	0.0	0.0	0.0	1.5
Myoporum	0.0	0.0	0.0	0.0	12.5	3.3	0.0	0.0	0.0	5.9	0.0	0.0	1.5
Nicotiana	3.7	0.0	9.1	0.0	0.0	0.0	0.0	0.0	0.0	0.0	0.0	0.0	1.5
Spyridium	0.0	2.5	0.0	0.0	0.0	0.0	0.0	0.0	0.0	17.6	0.0	0.0	1.5
Calytrix	0.0	0.0	3.0	0.0	0.0	0.0	0.0	0.0	0.0	11.8	0.0	0.0	1.1
Isoetopsis	0.0	0.0	3.0	0.0	0.0	0.0	0.0	0.0	5.0	0.0	5.3	0.0	1.1
Millotia	0.0	5.0	0.0	0.0	0.0	0.0	0.0	0.0	5.0	0.0	0.0	0.0	1.1
Wahlenbergia	7.4	2.5	0.0	0.0	0.0	0.0	0.0	0.0	0.0	0.0	0.0	0.0	1.1
Brachyscome	0.0	0.0	0.0	0.0	0.0	3.3	0.0	0.0	0.0	5.9	0.0	0.0	0.7

<i>S. table 3 cont.</i>	August	September	October	November	December	January	February	March	April	May	June	July	Annual
Galium	0.0	2.5	0.0	0.0	0.0	0.0	0.0	0.0	0.0	5.9	0.0	0.0	0.7
Goodenia	0.0	0.0	3.0	0.0	0.0	0.0	0.0	0.0	5.0	0.0	0.0	0.0	0.7
Prostanthera	0.0	0.0	0.0	0.0	0.0	3.3	0.0	0.0	0.0	5.9	0.0	0.0	0.7
Pterocaulon	0.0	0.0	0.0	0.0	0.0	0.0	0.0	0.0	0.0	5.9	5.3	0.0	0.7
Rostraria	0.0	0.0	3.0	3.8	0.0	0.0	0.0	0.0	0.0	0.0	0.0	0.0	0.7
Cyperus	0.0	0.0	3.0	0.0	0.0	0.0	0.0	0.0	0.0	0.0	0.0	0.0	0.4
Gypsophila	3.7	0.0	0.0	0.0	0.0	0.0	0.0	0.0	0.0	0.0	0.0	0.0	0.4
Pleurosorus	0.0	0.0	0.0	0.0	6.3	0.0	0.0	0.0	0.0	0.0	0.0	0.0	0.4
Santalum	0.0	2.5	0.0	0.0	0.0	0.0	0.0	0.0	0.0	0.0	0.0	0.0	0.4

SUPPLEMENTARY TABLE 4 Jacob's Index values for genera detected in >1 scat, averaged for each month. Genera detected in less than five scats *and* less than five vegetation surveys were omitted. Positive values indicate a preference relative to availability, negative values indicate avoidance.

Genus	August	September	October	November	December	January	February	March	April	May	June	July	Mean
Acacia	-0.90	-0.64	-0.14	-0.41	0.56	0.20	0.80	0.50	-0.29	0.88	-0.77	-0.87	-0.09
Actinobole	-0.72	-0.89	-0.96	0.24	1.00	-1.00	-1.00	-1.00	-1.00	1.00	-1.00	-1.00	-0.53
Ajuga	-1.00	-0.76	-0.86	-0.72	-1.00	-0.56			-1.00	-0.04	-0.52	-1.00	-0.75
Alectryon	-1.00	1.00	-0.56		-0.30	-1.00	1.00	-1.00		1.00	-0.71	-1.00	-0.26
Allocasuarina	-1.00	-1.00									-1.00	-1.00	-1.00
Amyema			-1.00	-1.00					-1.00		-1.00	-1.00	-1.00
Anagallis	-1.00	-1.00	-1.00	-1.00	-1.00		-1.00				-1.00	-1.00	-1.00
Arachis	1.00	1.00	1.00	1.00		1.00	1.00	1.00	1.00		1.00		1.00
Asphodelus	-1.00	-1.00	-0.51	-1.00	-1.00	-0.81	-0.83	-1.00	-1.00	-0.81	-1.00	-1.00	-0.91
Austrostipa	1.00	0.66	0.72	0.87	0.66	-0.53	1.00	0.33	0.06	-1.00	-0.89	-0.38	0.21
Avena	1.00	1.00	1.00	1.00	1.00	1.00			1.00	1.00	1.00		1.00
Boerhavia		1.00	-0.05	-0.31		-1.00		1.00	-1.00		1.00		0.09
Brachyscome	-1.00	-1.00	-1.00	-1.00		1.00				1.00			-0.33
Bromus	-0.79	-0.92	-1.00	-1.00	-1.00	-0.93	-1.00	-1.00					-0.96
Bursaria	-1.00	-1.00	-1.00	-0.72	-0.30	-1.00	-0.04		-1.00	0.37	-1.00	-1.00	-0.70
Callitris	-1.00	-1.00	-1.00	-1.00	-1.00	-1.00	-1.00	-1.00	-1.00	-1.00	-1.00	-1.00	-1.00
Calostemma	-1.00	-1.00	-1.00			-1.00	-1.00	-1.00	-1.00	-1.00	-1.00	-1.00	-1.00
Calytrix	-1.00	-1.00	-0.56	-1.00					-1.00	-0.03	-1.00	-1.00	-0.82
Carrichtera	0.02	-0.40	-0.58	-0.78	-0.76	-0.47	-0.35	-0.60	-0.83	-0.53	-0.52	-0.04	-0.49
Cassinia	-1.00	-1.00	-1.00	-1.00	-1.00	-1.00	-1.00		-1.00	-1.00	-1.00	-1.00	-1.00
Cassytha	-0.06	1.00	1.00	1.00	1.00	1.00	1.00	1.00	1.00	1.00	1.00		0.90
Centaurea	0.43	-0.56	-1.00	-1.00	-0.90	-0.90	-0.94	-0.80	-0.75	-1.00	-1.00	-0.03	-0.71
Cheilanthes		-1.00				-1.00	-1.00	-1.00		-1.00	-1.00	-1.00	-1.00
Chrysocephalum	-0.43	-0.96	-1.00	-1.00	-1.00	-1.00	-1.00	-1.00	-1.00	-0.43	-1.00	-1.00	-0.90
Clematis	-1.00	-1.00	-1.00	-1.00	-1.00	-1.00		-1.00	-1.00	-1.00	-1.00	-1.00	-1.00
Cymbopogon			-1.00	-1.00	-1.00	-1.00	-1.00		-1.00	-1.00		-1.00	-1.00
Daucus	1.00	-0.41	-0.86	1.00	1.00					1.00	-1.00	-0.76	0.12
Dittrichia			-1.00	-1.00	-1.00	-1.00	-1.00	-1.00	-1.00	-1.00	-1.00	-1.00	-1.00
Dodonaea	-1.00	-0.92	-0.92	-1.00	-0.79	-0.86	-0.70	-1.00	-0.92	0.08	-0.87	-1.00	-0.83
Eremophila	-1.00		-0.78		1.00	1.00			0.05	1.00			0.21
Erodium	-0.75	-0.85	-1.00	0.36	1.00					1.00	-1.00	-1.00	-0.28
Eucalyptus	-0.84	-0.65	1.00	0.53	-0.60	1.00	0.11	-0.38	0.04	-0.05	-0.30	0.29	-0.01
Euphorbia	-0.68	-0.66	-1.00	-0.72	-1.00	-1.00	-1.00	-1.00	-0.62				-0.85
Geranium	0.27	-0.41	1.00	1.00	1.00	-1.00	1.00	1.00	1.00	-1.00	-1.00	-0.81	0.17
Goodenia	-1.00		-0.78	-1.00					1.00			-1.00	-0.56

<i>S. table 4 cont.</i>	August	September	October	November	December	January	February	March	April	May	June	July	Mean
Hyalosperma	-1.00	-0.92	-1.00			1.00				1.00			-0.18
Jasminum	-1.00				0.30	0.29				1.00	1.00	-1.00	0.10
Leiocarpa		-1.00	-1.00								-1.00	-1.00	-1.00
Limonium	1.00	-0.06	-0.78	0.24	0.07	-1.00				1.00			0.07
Maireana	0.71	0.04	0.70	1.00	0.46	0.68	1.00	1.00	0.27	0.87	0.37	-0.51	0.55
Marrubium	-0.93	-0.72	-1.00	-1.00	-0.90	-0.96	-0.95	-1.00	-1.00	-0.96	-1.00	-1.00	-0.95
Medicago	-0.92	-0.73	-0.35	-0.31	0.82	1.00	-1.00	1.00	-0.31	-0.39	-1.00	-1.00	-0.27
Melaleuca	1.00	1.00	1.00	1.00	1.00	1.00	1.00	1.00	1.00	1.00	1.00	1.00	1.00
Melilotus	1.00	-1.00	-1.00	-0.14	1.00	1.00		-1.00		1.00	1.00		0.21
Moraea	1.00	0.55	1.00	1.00	1.00		1.00		1.00		1.00	1.00	0.95
Olearia	-0.48	-0.76	-0.86	-0.83	-0.55	-1.00	-0.40	-1.00	-1.00	0.45	-0.89	-1.00	-0.69
Oxalis	-0.10	-0.41	0.04	-0.85	0.23	-1.00	1.00	1.00	1.00	-1.00	-0.96	-0.91	-0.16
Petalostylis	1.00	1.00	1.00	1.00	1.00	1.00	1.00	1.00	1.00	1.00	1.00	1.00	1.00
Pittosporum		1.00			1.00	1.00		-1.00	1.00	1.00	1.00		0.71
Podolepis	-0.90	-0.82	-0.91	-0.92	-1.00	-0.90	-0.70	-1.00	-1.00	-1.00	-0.83	-1.00	-0.91
Ptilotus		-1.00	-1.00	-1.00	-1.00						-1.00	-1.00	-1.00
Rhagodia	1.00	-0.66	-0.27	1.00	-1.00		1.00	-1.00	-1.00		-1.00		-0.21
Rhodanthe	-0.78	-0.69	-0.56	1.00		1.00	1.00	1.00	1.00	1.00	-0.44	-0.03	0.32
Rytidosperma	1.00	1.00	-0.78	-1.00	-1.00	-1.00		-1.00	-1.00	-0.03	-1.00		-0.48
Senecio	-0.79	-0.83	-0.92	-0.69	-0.85	-0.87	-0.83	-1.00	-0.88	-0.29	-0.48	-0.43	-0.74
Senna	-0.67	0.16	-0.65	-0.15	0.11	-0.76	-0.45	0.65	-0.83	-0.32	-0.92	-0.80	-0.39
Sida	-0.41	1.00	-0.78	-0.50	-1.00	1.00	1.00	-1.00	-1.00	0.58	-0.44	-1.00	-0.21
Silene	1.00	0.54	-0.52	0.28	0.28	-0.73	-0.50	0.80	-0.29	1.00	-1.00	1.00	0.15
Sisymbrium	-0.27	-0.47	-0.06	0.36	-0.76	-0.86	-0.45	-0.75	-0.88	-0.43	-1.00	-0.80	-0.53
Solanum		1.00	1.00	-1.00	-1.00	-1.00	1.00		-1.00		-0.10		-0.14
Sonchus	1.00	0.40	0.54	0.19	0.82	1.00	-0.04	1.00	1.00	1.00	1.00	0.36	0.69
Stackhousia	0.55	-0.16	-0.09	1.00	1.00	1.00	1.00	1.00	1.00	1.00	-0.44	0.08	0.58
Trifolium	-1.00	-0.95	-0.91	-1.00	-0.20	0.68			1.00	1.00	1.00		-0.04
Vittadinia	-0.45	-1.00	-0.94	-0.89	-1.00	-1.00	-1.00	-1.00	-1.00	-0.39	-1.00	-0.41	-0.84
Vulpia	1.00	-0.44	-0.91	-1.00	-1.00	-0.98	-1.00	-1.00	-1.00				-0.70
Wahlenbergia	-0.06	1.00	-1.00			-1.00				-1.00			-0.41
Wurmbea	-0.34	-0.69					1.00		1.00	0.58	-1.00	-0.87	-0.04
Xanthorrhoea	-1.00	-1.00		-1.00			-1.00				-1.00	-1.00	-1.00
Zygophyllum	0.69	1.00	0.79	0.80	1.00	1.00	1.00	1.00	1.00	1.00	1.00	1.00	0.94