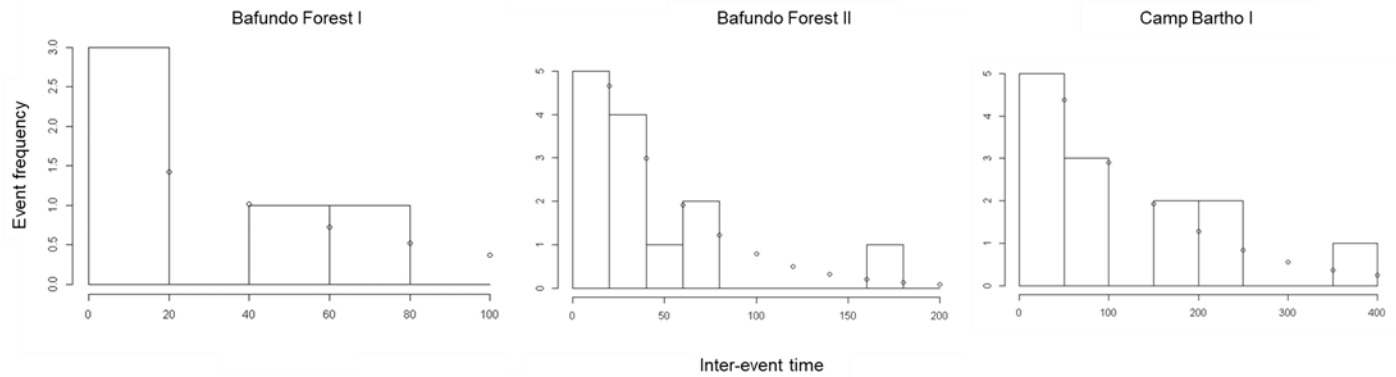
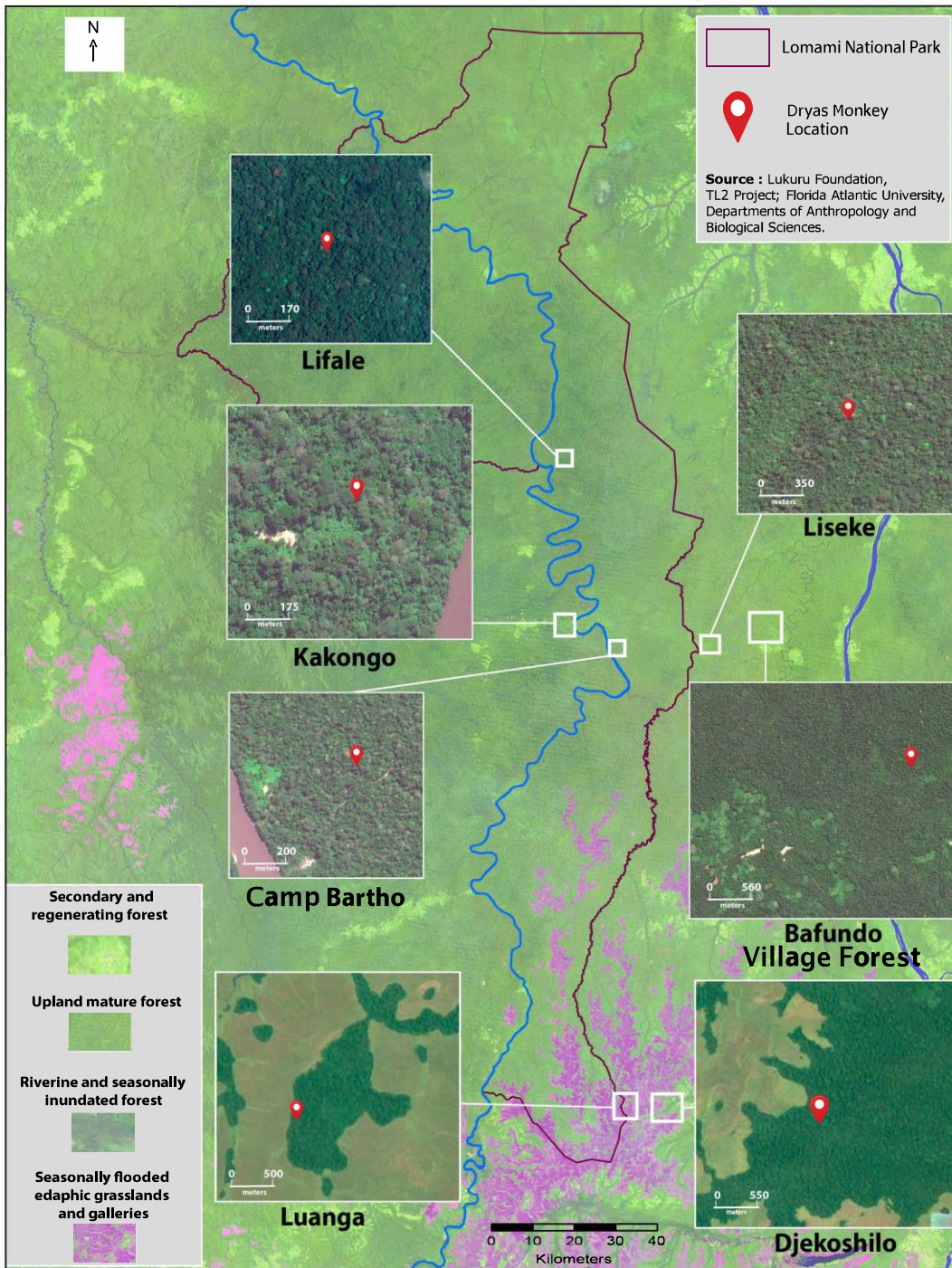


Using local knowledge and camera-traps to investigate occurrence and habitat preference of an Endangered primate: the endemic dryas monkey in the Democratic Republic of the Congo

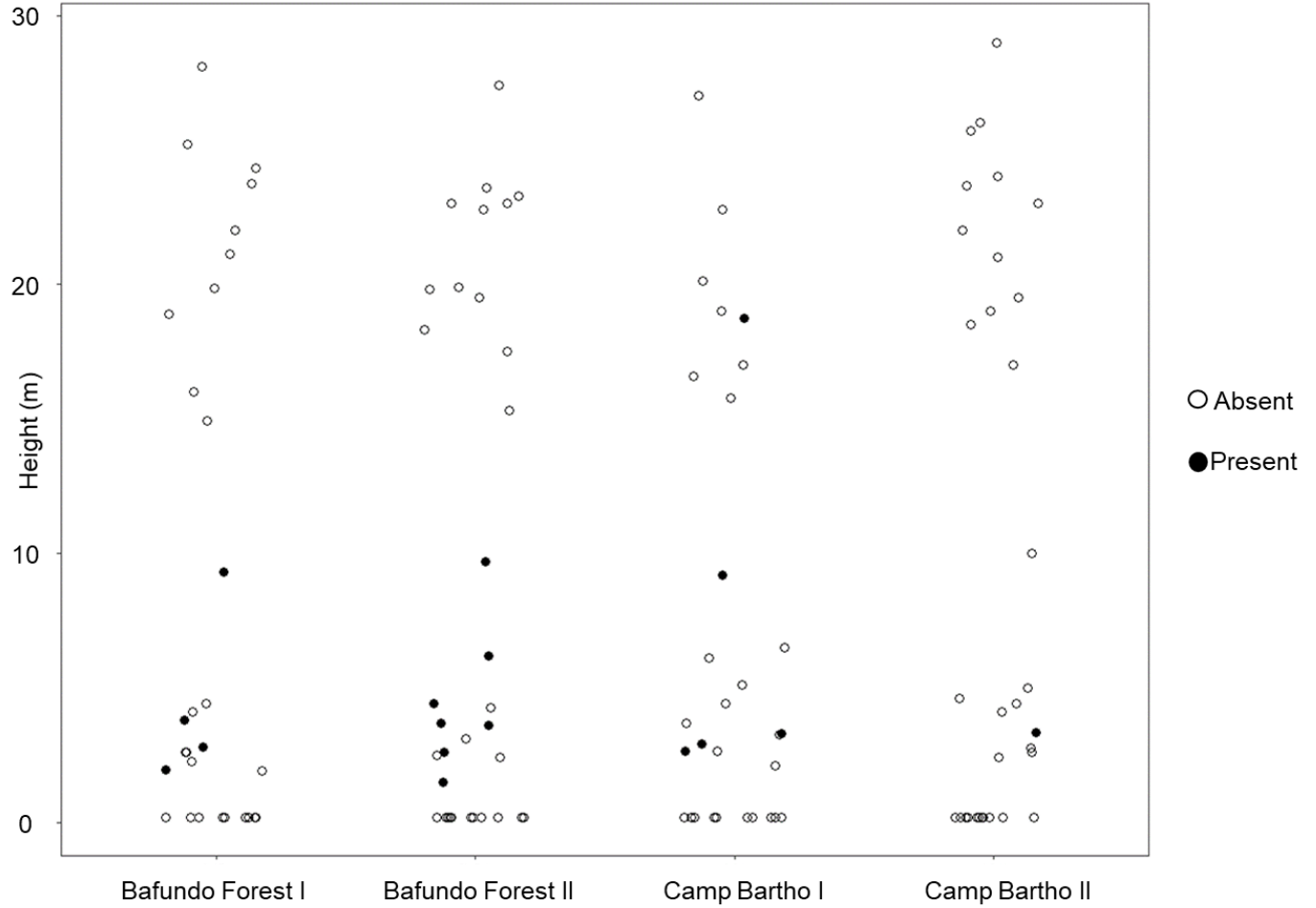
DANIEL ALEMPIJEVIC, JOHN A. HART, TERESE B. HART and KATE M. DETWILER



SUPPLEMENTARY FIG. 1 Histograms of inter-event time and event frequencies for dryas monkeys in Bafundo Forest and Camp Bartho, Maniema Province, DRC. The exponential distribution is fitted to each histogram using the parameter estimate (understorey events/understorey trap effort).



SUPPLEMENTARY FIG. 2 Confirmed locations of dryas monkeys in Lomami National Park and its buffer zone. Inset maps highlight variation in habitat types where dryas monkeys were detected. All sightings occurred in dense thickets and liana tangles, despite varying habitat types.



SUPPLEMENTARY FIG. 3 The height of each camera trap in four multi-strata camera trap surveys in Bafundo Forest and Camp Bartho in the Lomami National Park and buffer zone. 20 camera trap “columns” monitored the ground, understory and canopy at 20 strategically determined sites using local knowledge of dryas monkey occupancy in the Phase I survey. Twenty-four camera traps columns were placed strategically 500 m apart in the Phase II survey. Trap heights where dryas monkeys were detected are indicated by a solid black circle.

SUPPLEMENTARY MATERIAL 1 Habitat multivariate logistic regression models for habitat use by dryas monkeys in Bafundo Forest and Camp Bartho, Maniema Province, DRC.

- 0 : glm(formula = Presence ~ 1, family = binomial(link = "logit"), data = Vegdata)
- 1 : glm(formula = Presence ~ CC + 1, family = binomial(link = "logit"), data = Vegdata)
- 2 : glm(formula = Presence ~ CH + 1, family = binomial(link = "logit"), data = Vegdata)
- 3 : glm(formula = Presence ~ CC + CH + 1, family = binomial(link = "logit"), data = Vegdata)
- 4 : glm(formula = Presence ~ Clearing + 1, family = binomial(link = "logit"), data = Vegdata)
- 5 : glm(formula = Presence ~ CC + Clearing + 1, family = binomial(link = "logit"), data = Vegdata)
- 6 : glm(formula = Presence ~ CH + Clearing + 1, family = binomial(link = "logit"), data = Vegdata)
- 7 : glm(formula = Presence ~ CC + CH + Clearing + 1, family = binomial(link = "logit"), data = Vegdata)
- 8 : glm(formula = Presence ~ DBH + 1, family = binomial(link = "logit"), data = Vegdata)
- 9 : glm(formula = Presence ~ CC + DBH + 1, family = binomial(link = "logit"), data = Vegdata)
- 10 : glm(formula = Presence ~ CH + DBH + 1, family = binomial(link = "logit"), data = Vegdata)
- 11 : glm(formula = Presence ~ CC + CH + DBH + 1, family = binomial(link = "logit"), data = Vegdata)
- 12 : glm(formula = Presence ~ Clearing + DBH + 1, family = binomial(link = "logit"), data = Vegdata)
- 13 : glm(formula = Presence ~ CC + Clearing + DBH + 1, family = binomial(link = "logit"), data = Vegdata)
- 14 : glm(formula = Presence ~ CH + Clearing + DBH + 1, family = binomial(link = "logit"), data = Vegdata)
- 15 : glm(formula = Presence ~ CC + CH + Clearing + DBH + 1, family = binomial(link = "logit"), data = Vegdata)
- 16 : glm(formula = Presence ~ Trees + 1, family = binomial(link = "logit"), data = Vegdata)
- 17 : glm(formula = Presence ~ CC + Trees + 1, family = binomial(link = "logit"), data = Vegdata)
- 18 : glm(formula = Presence ~ CH + Trees + 1, family = binomial(link = "logit"), data = Vegdata)
- 19 : glm(formula = Presence ~ CC + CH + Trees + 1, family = binomial(link = "logit"), data = Vegdata)

20 : glm(formula = Presence ~ Clearing + Trees + 1, family = binomial(link = "logit"),
data = Vegdata)

21 : glm(formula = Presence ~ CC + Clearing + Trees + 1, family = binomial(link = "logit"),
data = Vegdata)

22 : glm(formula = Presence ~ CH + Clearing + Trees + 1, family = binomial(link = "logit"),
data = Vegdata)

23 : glm(formula = Presence ~ CC + CH + Clearing + Trees + 1, family = binomial(link = "logit"),
data = Vegdata)

24 : glm(formula = Presence ~ DBH + Trees + 1, family = binomial(link = "logit"),
data = Vegdata)

25 : glm(formula = Presence ~ CC + DBH + Trees + 1, family = binomial(link = "logit"),
data = Vegdata)

26 : glm(formula = Presence ~ CH + DBH + Trees + 1, family = binomial(link = "logit"),
data = Vegdata)

27 : glm(formula = Presence ~ CC + CH + DBH + Trees + 1, family = binomial(link = "logit"),
data = Vegdata)

28 : glm(formula = Presence ~ Clearing + DBH + Trees + 1, family = binomial(link = "logit"),
data = Vegdata)

29 : glm(formula = Presence ~ CC + Clearing + DBH + Trees + 1, family = binomial(link = "logit"),
data = Vegdata)

30 : glm(formula = Presence ~ CH + Clearing + DBH + Trees + 1, family = binomial(link = "logit"),
data = Vegdata)

31 : glm(formula = Presence ~ CC + CH + Clearing + DBH + Trees + 1,
family = binomial(link = "logit"), data = Vegdata)

32 : glm(formula = Presence ~ UC + 1, family = binomial(link = "logit"),
data = Vegdata)

33 : glm(formula = Presence ~ CC + UC + 1, family = binomial(link = "logit"),
data = Vegdata)

34 : glm(formula = Presence ~ CH + UC + 1, family = binomial(link = "logit"),
data = Vegdata)

35 : glm(formula = Presence ~ CC + CH + UC + 1, family = binomial(link = "logit"),
data = Vegdata)

36 : glm(formula = Presence ~ Clearing + UC + 1, family = binomial(link = "logit"),
data = Vegdata)

37 : glm(formula = Presence ~ CC + Clearing + UC + 1, family = binomial(link = "logit"),
data = Vegdata)

38 : glm(formula = Presence ~ CH + Clearing + UC + 1, family = binomial(link = "logit"),
data = Vegdata)

39 : glm(formula = Presence ~ CC + CH + Clearing + UC + 1, family = binomial(link = "logit"),
data = Vegdata)

40 : glm(formula = Presence ~ DBH + UC + 1, family = binomial(link = "logit"),
data = Vegdata)

41 : glm(formula = Presence ~ CC + DBH + UC + 1, family = binomial(link = "logit"),
data = Vegdata)

42 : glm(formula = Presence ~ CH + DBH + UC + 1, family = binomial(link = "logit"),
data = Vegdata)
43 : glm(formula = Presence ~ CC + CH + DBH + UC + 1, family = binomial(link = "logit"),
data = Vegdata)
44 : glm(formula = Presence ~ Clearing + DBH + UC + 1, family = binomial(link = "logit"),
data = Vegdata)
45 : glm(formula = Presence ~ CC + Clearing + DBH + UC + 1, family = binomial(link = "logit"),
data = Vegdata)
46 : glm(formula = Presence ~ CH + Clearing + DBH + UC + 1, family = binomial(link = "logit"),
data = Vegdata)
47 : glm(formula = Presence ~ CC + CH + Clearing + DBH + UC + 1, family = binomial(link =
"logit"),
data = Vegdata)
48 : glm(formula = Presence ~ Trees + UC + 1, family = binomial(link = "logit"),
data = Vegdata)
49 : glm(formula = Presence ~ CC + Trees + UC + 1, family = binomial(link = "logit"),
data = Vegdata)
50 : glm(formula = Presence ~ CH + Trees + UC + 1, family = binomial(link = "logit"),
data = Vegdata)
51 : glm(formula = Presence ~ CC + CH + Trees + UC + 1, family = binomial(link = "logit"),
data = Vegdata)
52 : glm(formula = Presence ~ Clearing + Trees + UC + 1, family = binomial(link = "logit"),
data = Vegdata)
53 : glm(formula = Presence ~ CC + Clearing + Trees + UC + 1, family = binomial(link = "logit"),
data = Vegdata)
54 : glm(formula = Presence ~ CH + Clearing + Trees + UC + 1, family = binomial(link = "logit"),
data = Vegdata)
55 : glm(formula = Presence ~ CC + CH + Clearing + Trees + UC + 1,
family = binomial(link = "logit"), data = Vegdata)
56 : glm(formula = Presence ~ DBH + Trees + UC + 1, family = binomial(link = "logit"),
data = Vegdata)
57 : glm(formula = Presence ~ CC + DBH + Trees + UC + 1, family = binomial(link = "logit"),
data = Vegdata)
58 : glm(formula = Presence ~ CH + DBH + Trees + UC + 1, family = binomial(link = "logit"),
data = Vegdata)
59 : glm(formula = Presence ~ CC + CH + DBH + Trees + UC + 1, family = binomial(link = "logit"),
data = Vegdata)
60 : glm(formula = Presence ~ Clearing + DBH + Trees + UC + 1, family = binomial(link = "logit"),
data = Vegdata)
61 : glm(formula = Presence ~ CC + Clearing + DBH + Trees + UC + 1,
family = binomial(link = "logit"), data = Vegdata)
62 : glm(formula = Presence ~ CH + Clearing + DBH + Trees + UC + 1,
family = binomial(link = "logit"), data = Vegdata)
63 : glm(formula = Presence ~ CC + CH + Clearing + DBH + Trees + UC +

```
1, family = binomial(link = "logit"), data = Vegdata)
```