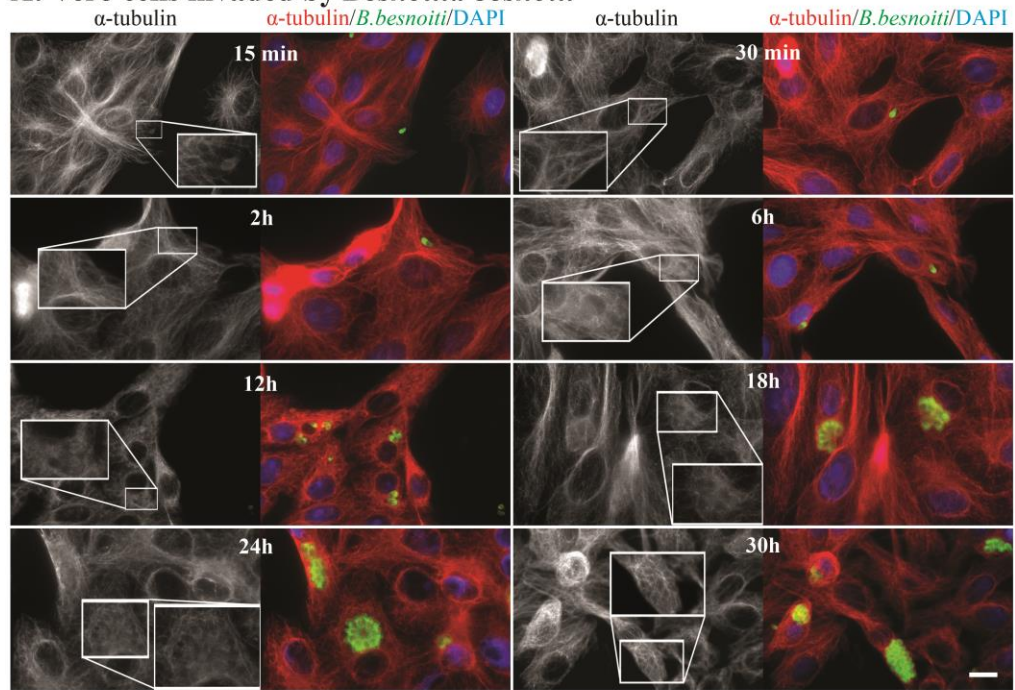
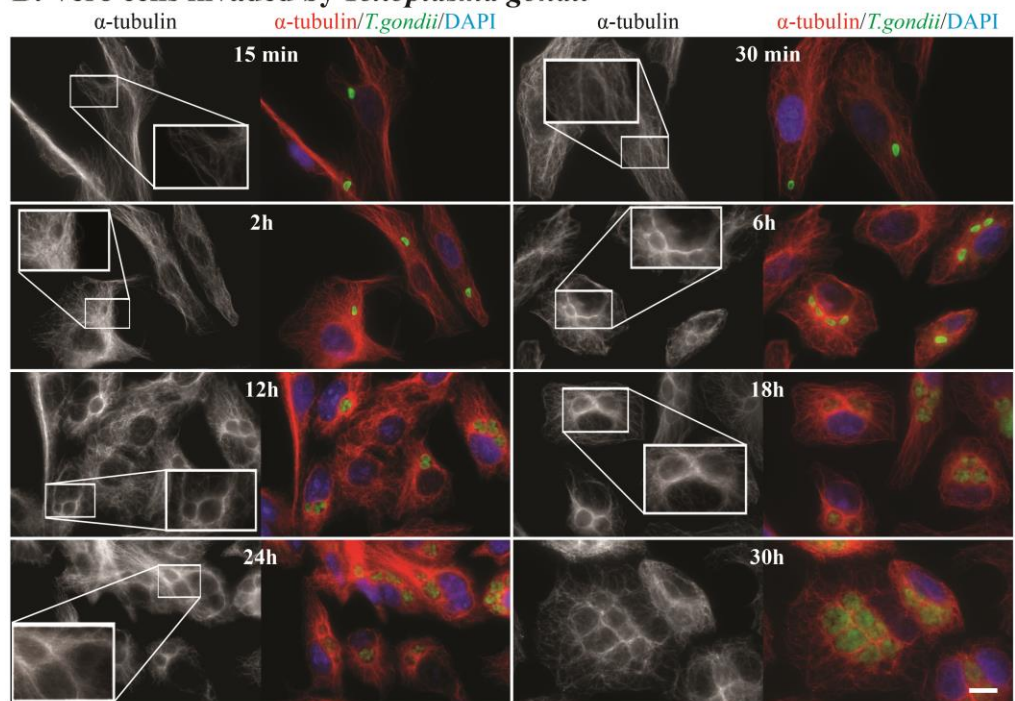


### A: Vero cells invaded by *Besnoitia besnoiti*



### B: Vero cells invaded by *Toxoplasma gondii*



**Fig. S1.** Host microtubule cytoskeleton rearrangement around the parasitophorous vacuole of *B. besnoiti* and *T. gondii*. Indirect immunolocalization of host cell  $\alpha$ -tubulin during invasion by *B. besnoiti* and *T. gondii*. Different time points from 15min to 30h of invasion are shown. On the left side, in gray,  $\alpha$ -tubulin shows the structure of host cell microtubules, and its organization surrounding the parasitophorous vacuoles (PV). Zoomed areas correspond to detailed views of the close interaction between host cell microtubules and PVs. On the right side  $\alpha$ -tubulin is shown in red, parasites in green (polyclonal antibodies against *B. besnoiti* and *T. gondii* were used), and blue for DNA staining with DAPI. (A) *B. besnoiti* invading Vero cells. (B) *T. gondii* invading Vero cells. Scale bars=7 $\mu$ m.